



# BLURRED BOUNDARIES:

THE IMAGININGS OF THE UNCANNY ALLURE.



A hybrid between surrealism and tradition.  
While I was developing the idea of surrealism, I wanted to bring a concept that is not related to surrealism. I thought bringing tradition into surrealism aesthetics will help to explore uncertainty allure and the result of unexpectedness.

I developed the tradition of my heritage which is South Korean and this inspiration will be developed in the print development part.

# HYBRIDITY





Korean traditional pattern (original version)

Flower



Geometric

Grass

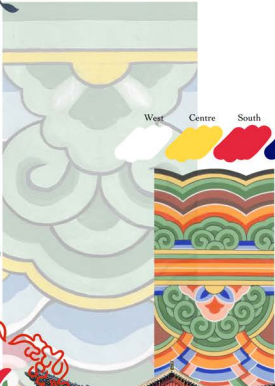
Cloud



Colour inspiration



Dancheong (traditional paint work)



West Centre South East North

Each colours mean five cardinal direction

# PRINT DEVELOPMENT

Juxtapositioning of Korean traditions with surreal glamour.  
 By relocating, resizing, and trying different combinations of them, I aimed to create modernised and abstract print designs from tradition for my collection.



Drawings with  
watercolours



From the original version of traditional patterns, I took each part (shapes) I wanted to develop and combine to create my own artwork with using watercolour. From those drawings, I played around with scales and opacity to create unconventional abstract and modern style of prints and bring the surreal feelings. While developing prints, I also developed colours from the colour inspiration to make sure all the colours harmonise well together.

# COLOUR & PRINT





I created more design ideas from collage. Exaggerated silhouette, feminine, glamour, luxury, sporty



# DESIGN DEVELOPMENT



Fitted top and voluminous bottom



From drawings inspired by automatism, I developed silhouettes and details of the top by playing around with the lines



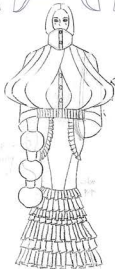
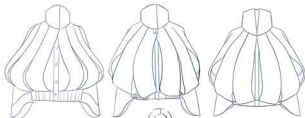
Initial inspiration to design idea



Process from paper to garments



Screen print details for sleeves



One of initial outfit drawings

# OUTFIT 1 SILHOUETTE



Inspired by stand works I focused on developing a voluminous and exaggerated silhouette of jackets. I chose scuba neoprene fabric which is unconventional as the main fabric to hold the shape of it, and bonded with cotton duck fabric to make it more confirm so that it stands nicely on the body. After various experiments with finishes for bonded scuba neoprene, I used bias tape to bind the edge and keep the clean and neat finishes.



How to wear in different way



Scuba neoprene bonded with cotton duck and binding finishes



# SKIRT DEVELOPMENT



Mix of box pleats and inverted box pleats

Knife pleats

Sublimation printings and hand pleated pleats

Hand crafted screenprinting and hand pleated pleats details



Made it wider to create exaggerated silhouette



Screen printed fabrics before being pleated

COOPER

Design development



Inspired by experiments on the stand and surrealist images, I have designed a dress with circle cut out on the middle of the garment.



Upper body toile developments



Process for perfecting fitted top and hole shape on the middle



Inside hole does not sit on the body  
Reduced the measurement of inside hole but it occurs the creases around it



OUTFIT 2 DEVELOPMENT

Change the shape to look clean when it is worn with dress



Trouser development



Hand pleated ribbon details for trousers





Look 1



Look 2



Look 3



Look 4



Look 5



Look 6

LINE UP

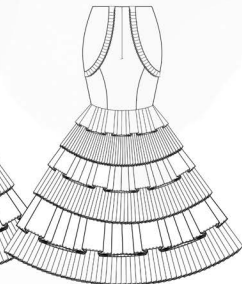
# OUTFIT BREAKDOWN



Look 1



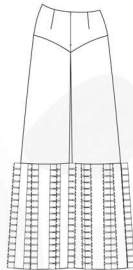
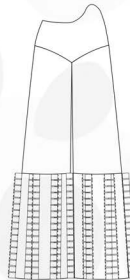
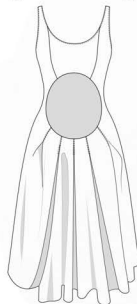
Jacket is mainly made with scuba neoprene fabric and cotton duck bond.

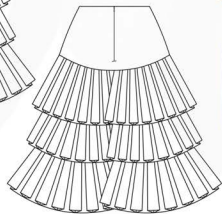
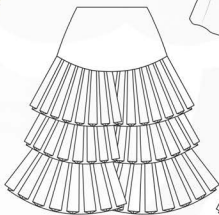


Look 2

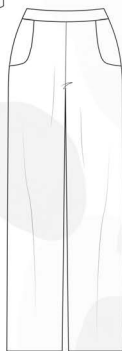
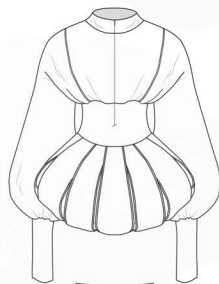


Cotton satin for dress  
Stretch netting fabric for top  
light weight duchess satin for  
trousers





Look 3

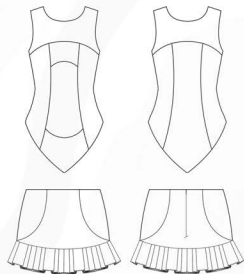


Look 4

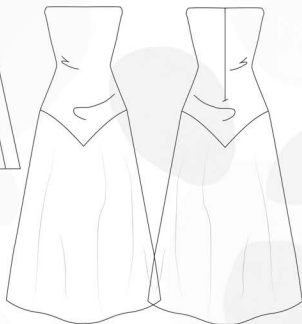




Look 5



Look 6



# RANGI PLAN

