

## *Gus Beech – Portfolio*

*BA Hons Fashion Knitwear &  
Knitted Textile Design  
Nottingham Trent University*

### *“Upward Spiral” Concept Statement*

Initial inspiration for this project came from an academic theory from Roland Barthes book ‘The Language of Fashion’. The theory discusses how gemstones and metals gain monetary value despite being raw materials dug up from the ground. He credited human alteration and craftsmanship as the crucial aid in the social reinvention of value.

Over the course of the pandemic, I started adopting a mythological perspective on our contemporary situation, in terms of political lying, disease, and geological disaster. Rather than looking at these as necessarily contemporary conditions, I started realising that humans have been dealing with similar circumstances since the beginning, leading me to feel very connected with people living in historic civilisations. It helped to humanise the whole experience of being alive in a chaotic time, describing the situation as mythological.

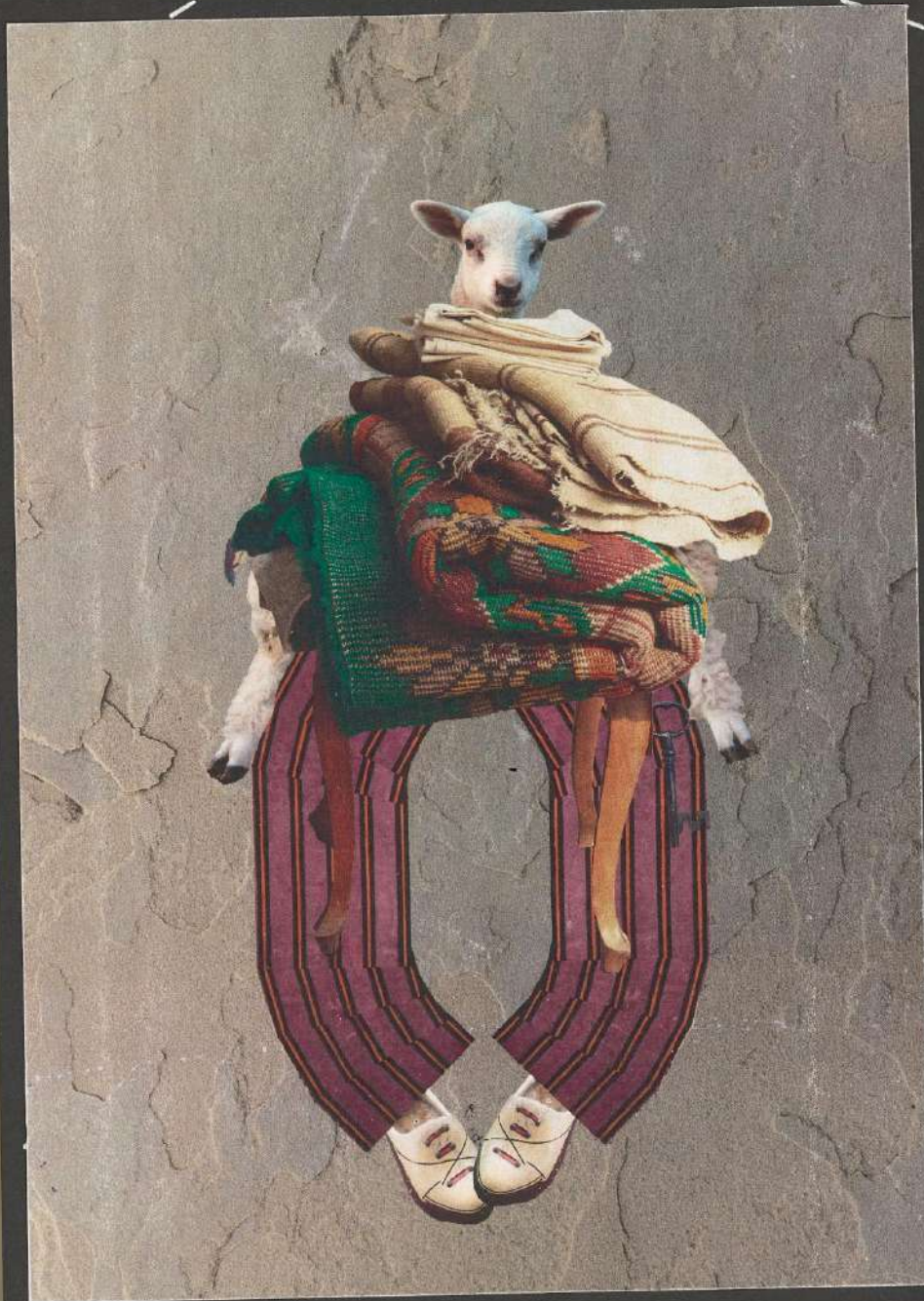
Considering Roland Barthes theory and historic civilisation, the collection is an investigation into rugs, tapestries, and ironmongery and the emotional and social significance they had to their culture at the time of the objects creation. To reinterpret the source material, I intend to adopt a surrealist ideology to combine the historic textile references with a romantic / fantastical visual language.

“Upward Spiral” describes this exponential and emotional expansion caused by the blending of cerebral traditional textiles with the pastoral / mythological visual language used by historic civilisations to create a textured, tangible, and heady mood.

*Upward Spiral*  
Concept Board



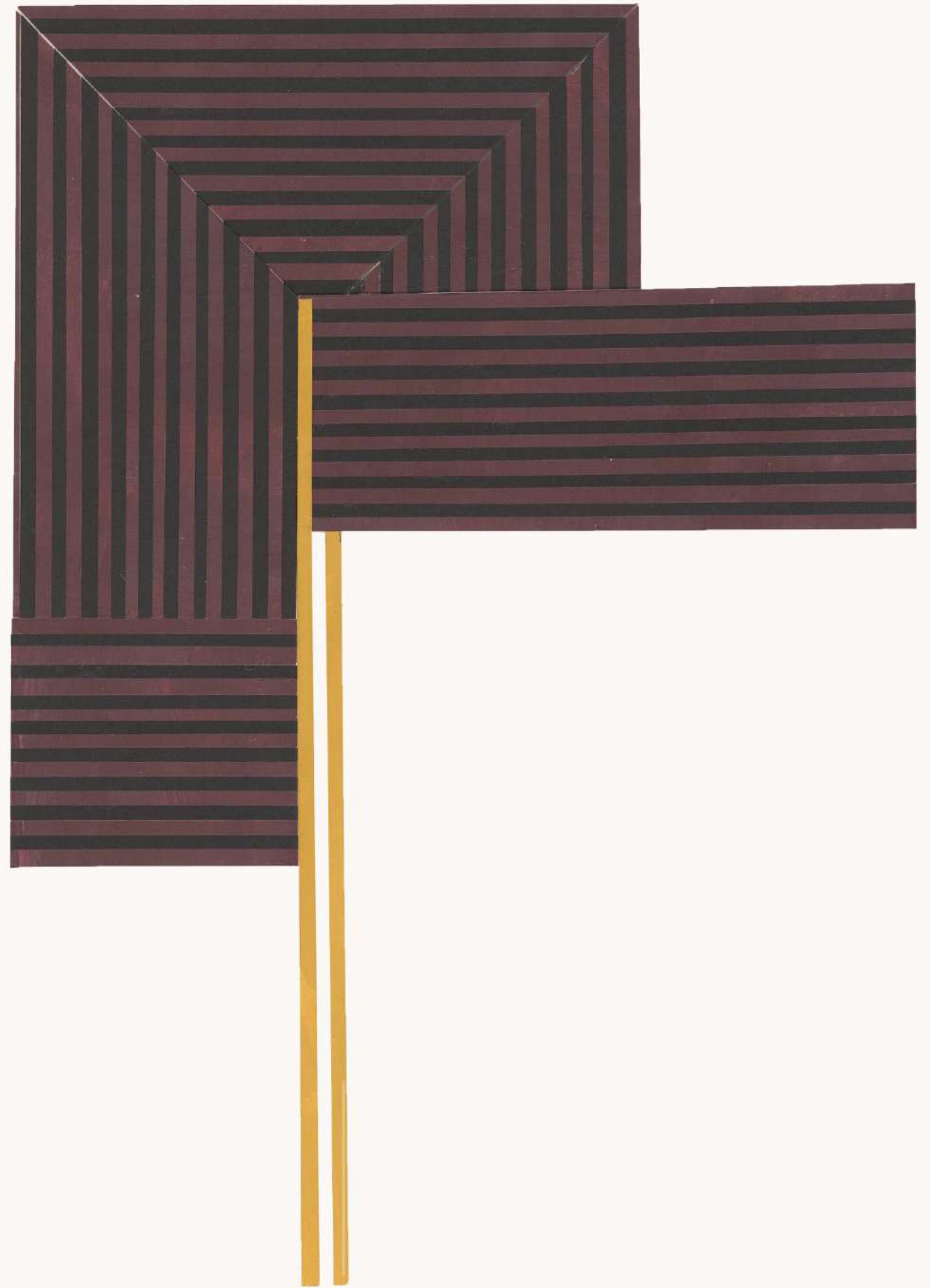






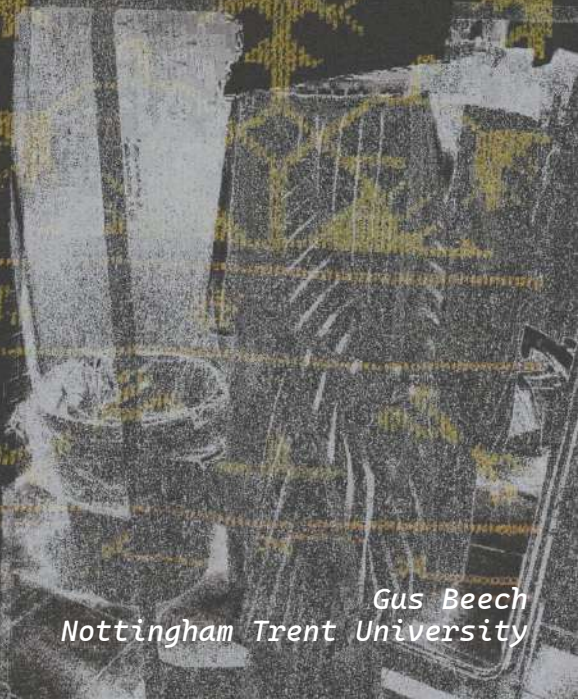
Upward Spiral  
Silhouette Development







[Hatched pattern]	12
[Hatched pattern]	2
[Hatched pattern]	2
[Hatched pattern]	16
[Hatched pattern]	4
[Hatched pattern]	4
[Hatched pattern]	8
[Hatched pattern]	6
[Hatched pattern]	6
[Hatched pattern]	6
[Hatched pattern]	8
[Hatched pattern]	6
[Hatched pattern]	5
[Hatched pattern]	4
[Hatched pattern]	16
[Hatched pattern]	16
[Hatched pattern]	10
[Hatched pattern]	2

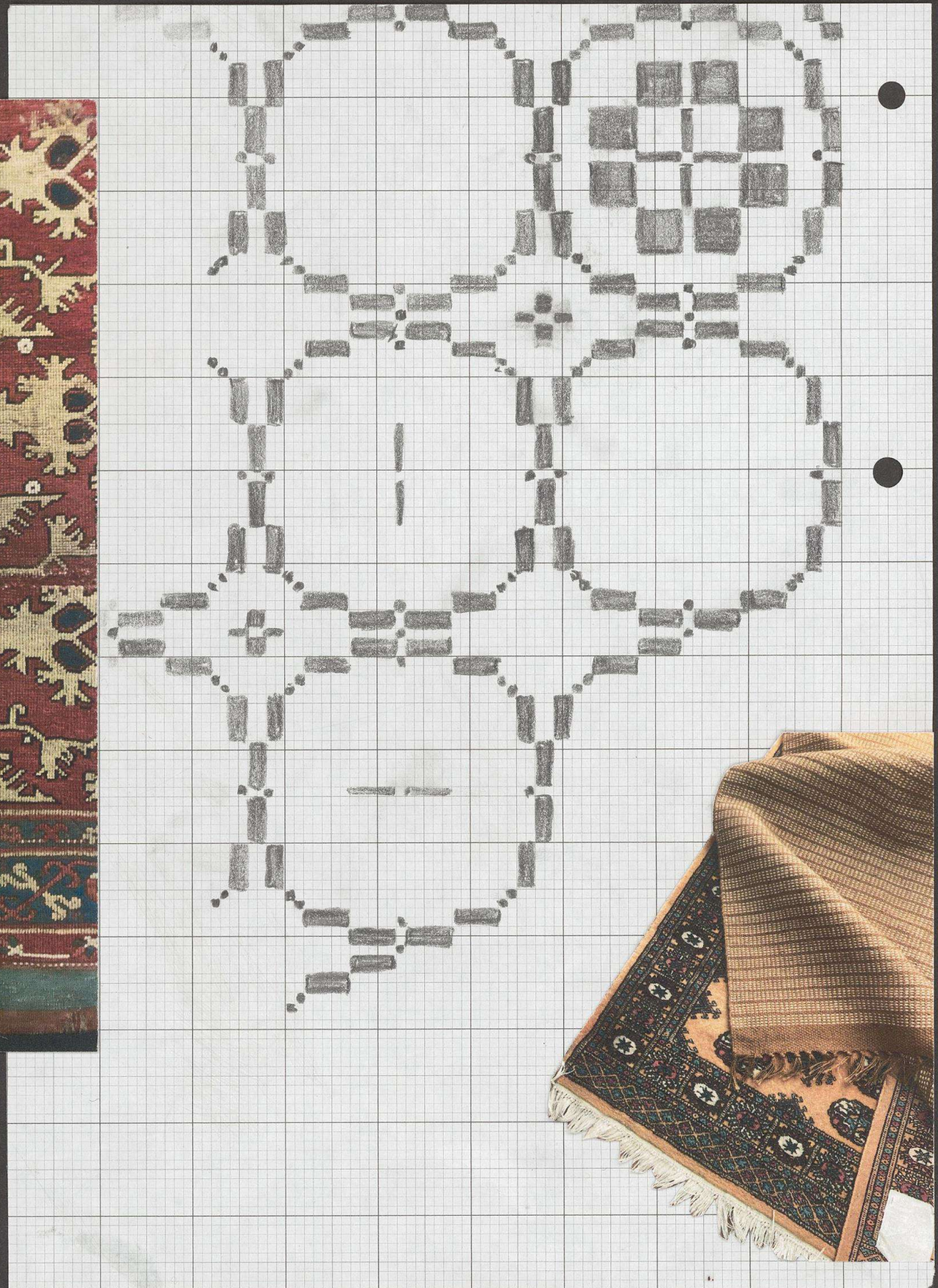




*Upward Spiral*  
*Silhouette Development*



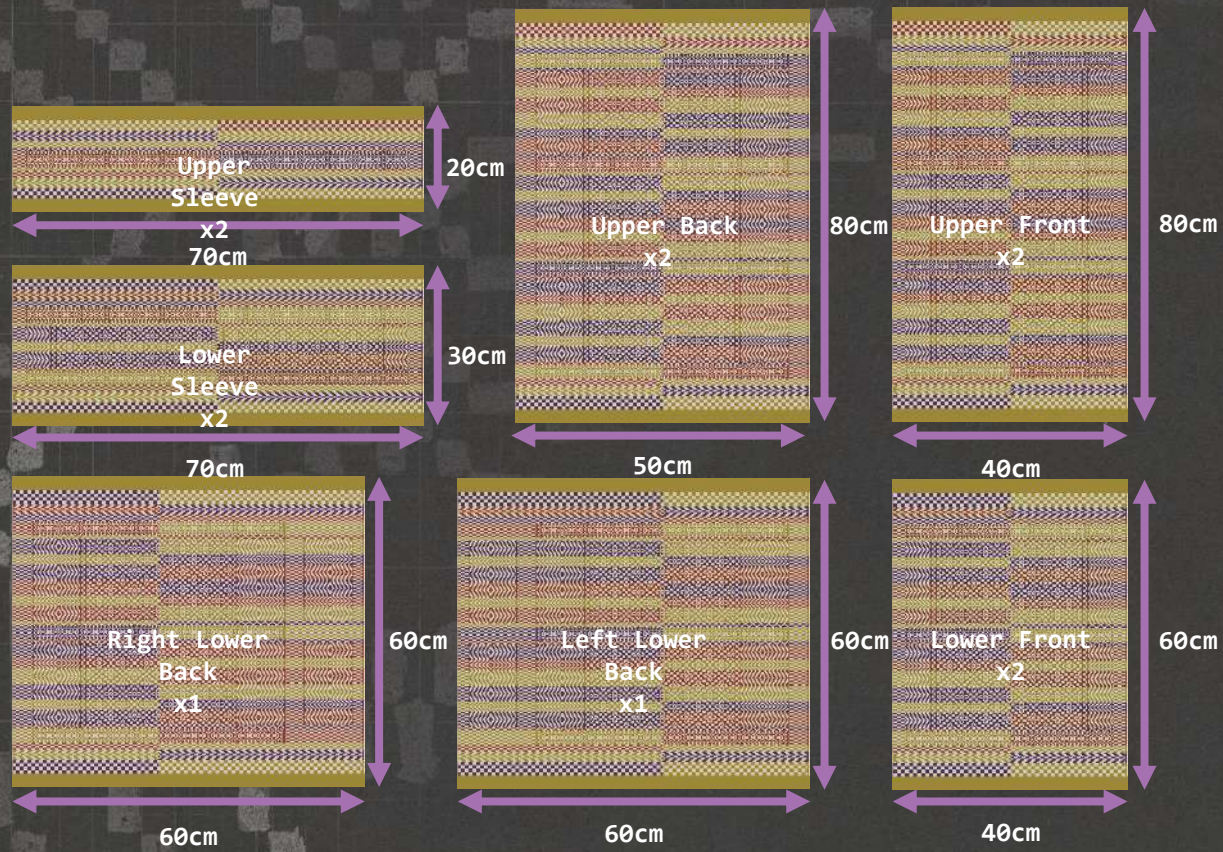
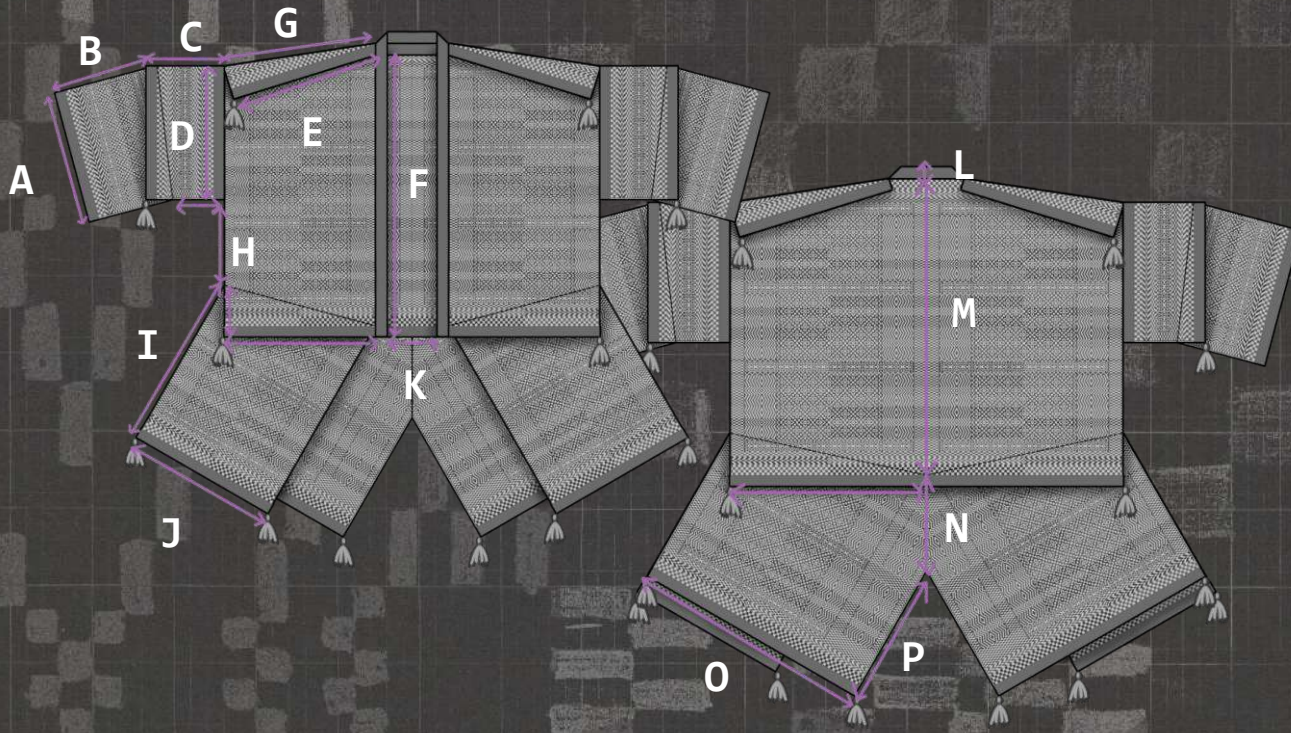








*Upward Spiral*  
Tech Pack



A Lower Sleeve Width	35cm	Yarn Types: Unknown Origin (1/24Nm) 100% Acrylic in colours: • Kahve • Hardal • Everest
B Lower Sleeve Height	30cm	
C Upper Sleeve Height	20cm	Yeoman Yarns – DK Cotton Colour: Beige 100% Cotton
D Upper Sleeve Width	45cm	
E Upper Front Width	40cm	<b>Make Up Sequence:</b> <ul style="list-style-type: none"> <li>• Link attached fold-over trim on linker to finish all panels</li> <li>• Using masking tape as guides, sew diagonally across the upper front and back panels to form a slope</li> <li>• Sew lower front and lower back panels to the upper panels in the same way</li> <li>• Sew upper and lower sleeve panels together in the same way</li> <li>• Hand sew the centre back seam together to eliminate seam allowance, do the same to attach the sleeves to the body</li> <li>• Hand sew the underarm and side seams together</li> <li>• Hand sew strapping neckline</li> <li>• Make and attach tassels</li> </ul>
F Upper Front Height	80cm	
G Shoulder Width	42cm	
H Underarm Length	10cm	
I Lower Front Height	60cm	
J Lower Front Width	40cm	
K Front Opening	20cm	
L Strapping Width	3.5cm	
M Upper Back Height	80cm	
N Vent Length	20cm	
O Lower Back Width	60cm	Linker Point: 14
P Lower Back Height	60cm	Knit Structure and Machine Gauge: • ADF Stoll - Reverse Plaiting with inlay on 12gg



*Upward Spiral*  
*Final Outcomes*

