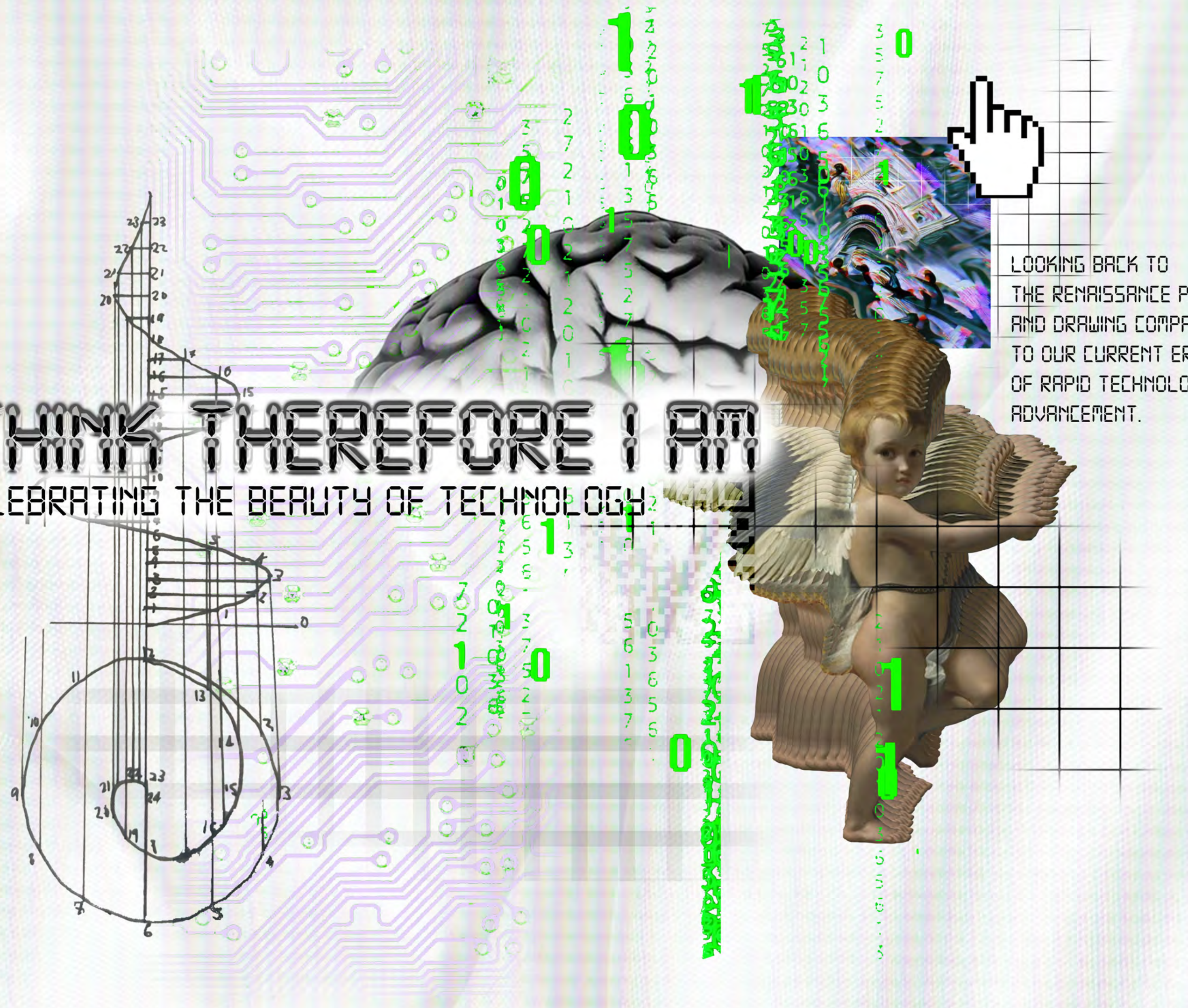
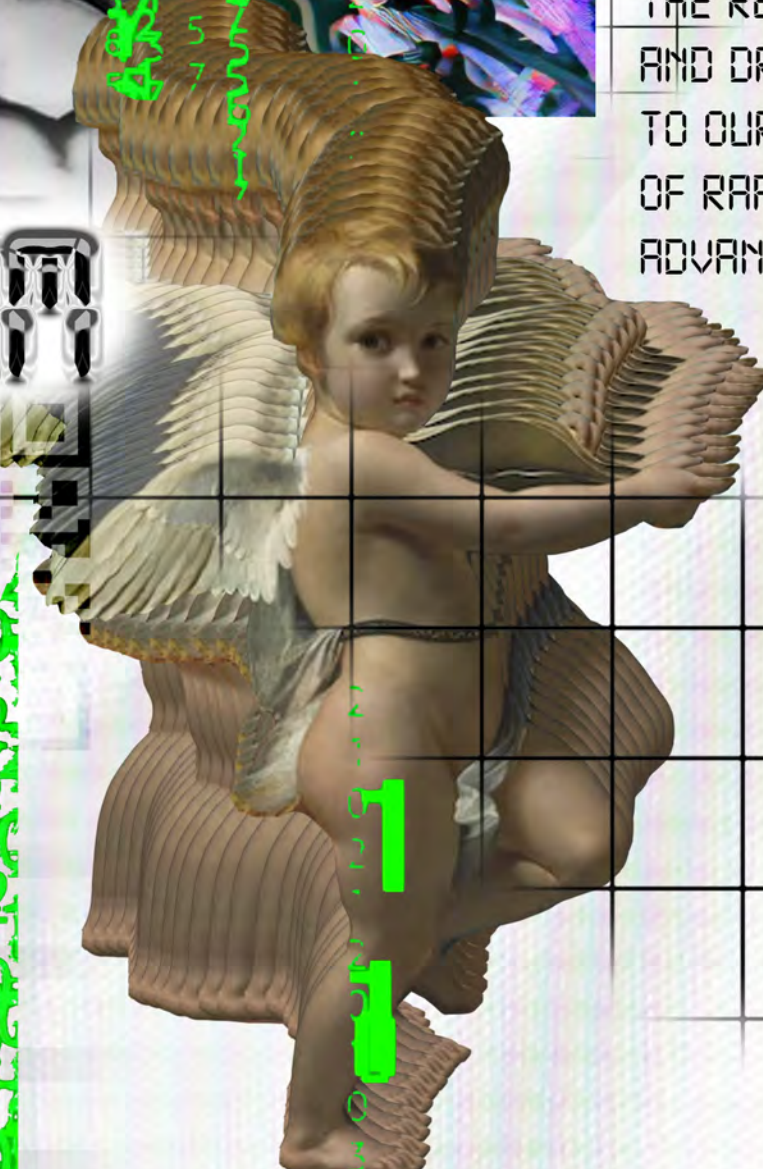
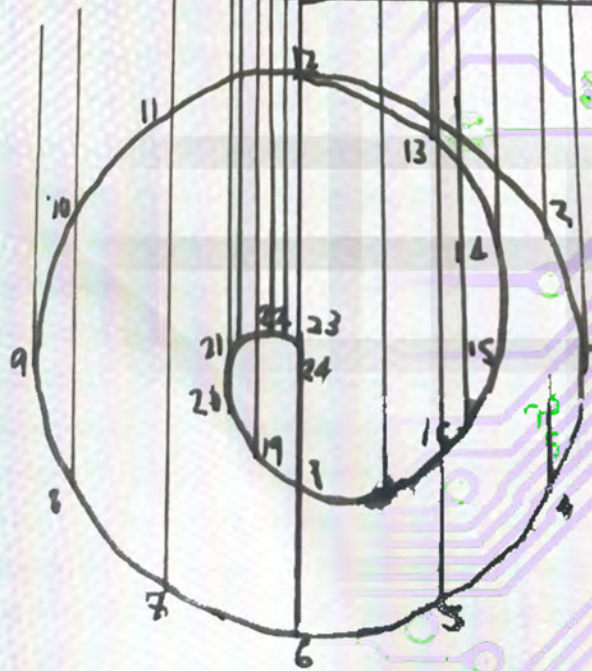


# I THINK THEREFORE I AM

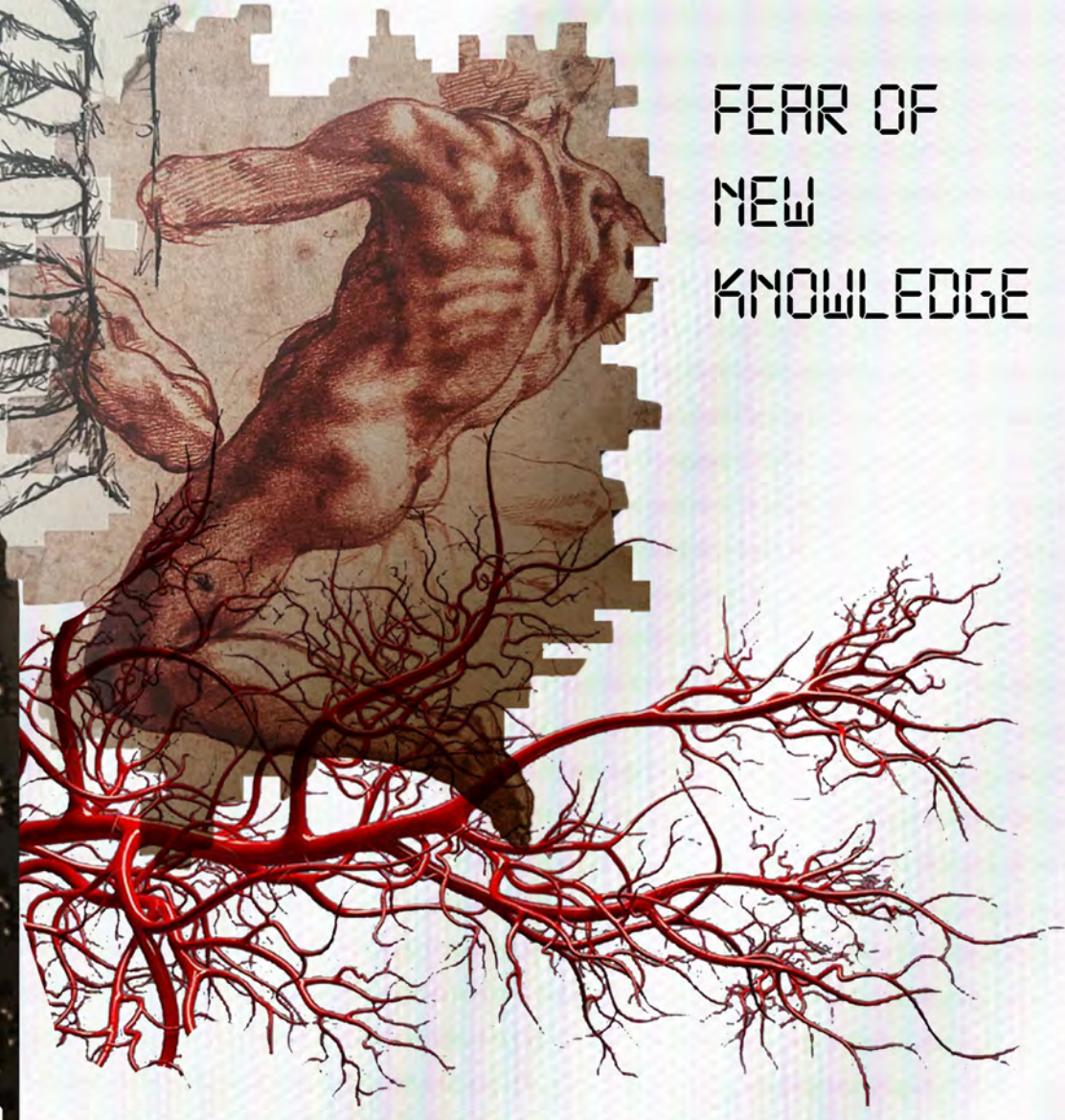
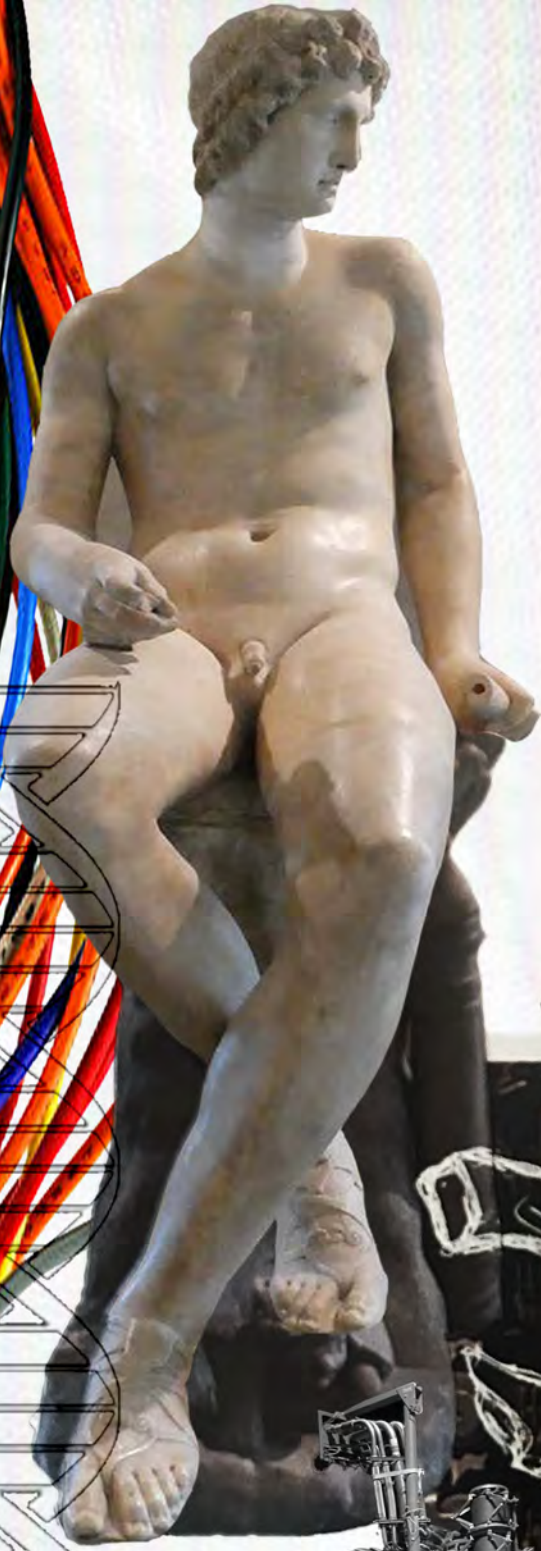
CELEBRATING THE BEAUTY OF TECHNOLOGY

LOOKING BACK TO  
THE RENAISSANCE PERIOD  
AND DRAWING COMPARISONS  
TO OUR CURRENT ERA  
OF RAPID TECHNOLOGICAL  
ADVANCEMENT.





THE PROBABILITY OF HUMAN ERROR IS CONSIDERABLY HIGHER THAN THAT OF MACHINE ERROR

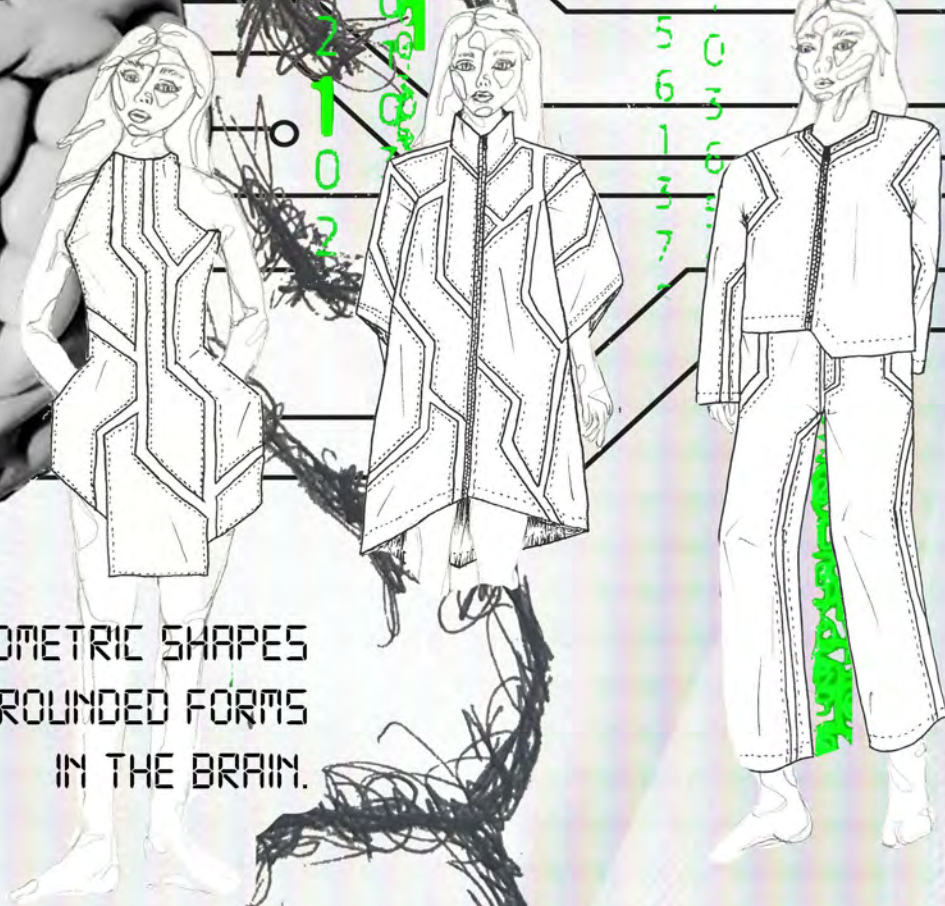


# MAN VS MACHINE

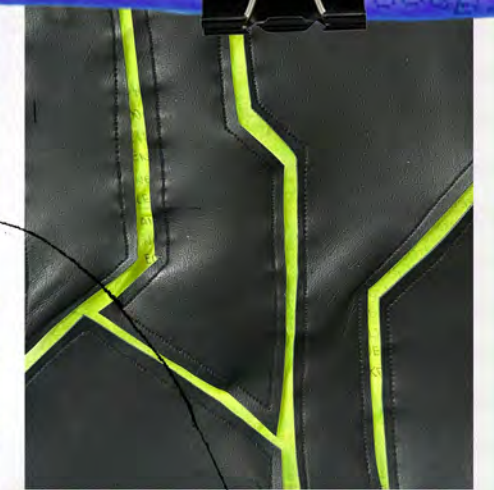
FEAR OF  
NEW  
KNOWLEDGE

ANATOMY

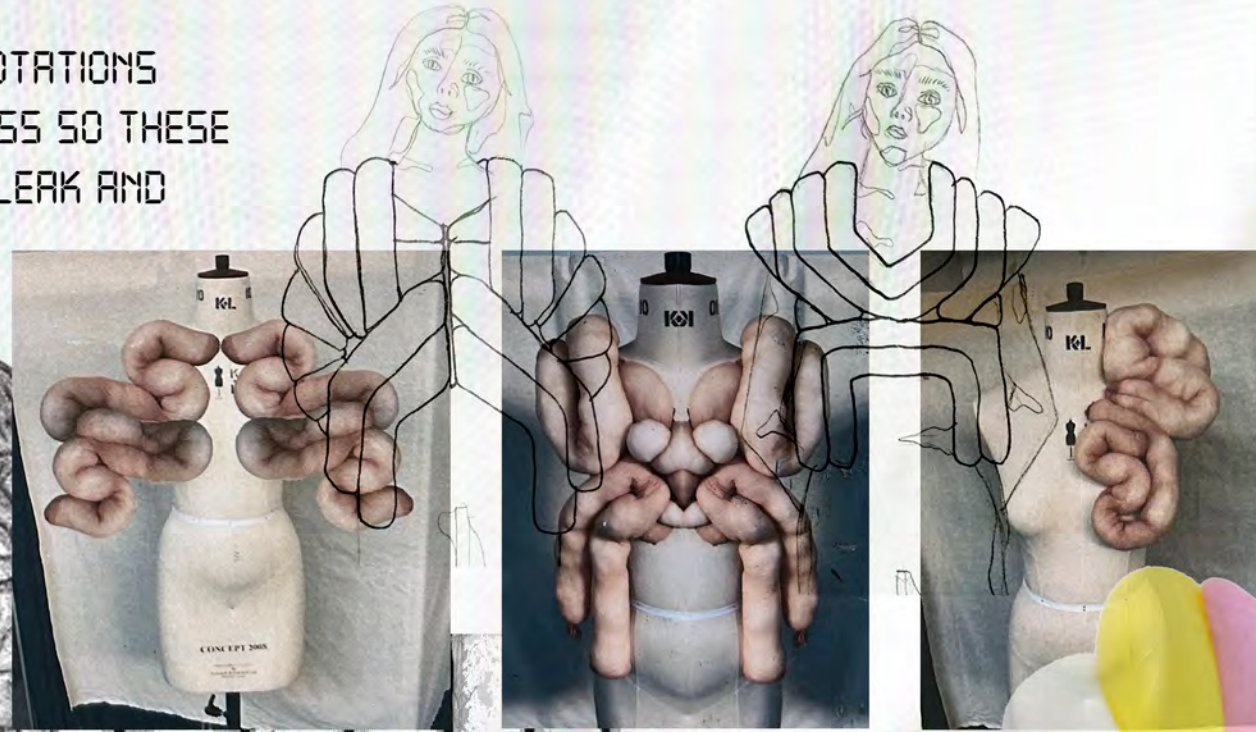
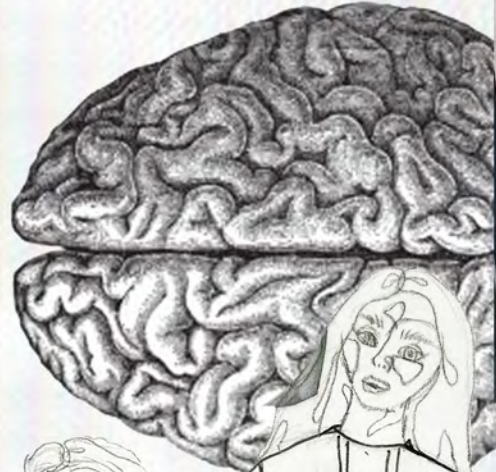
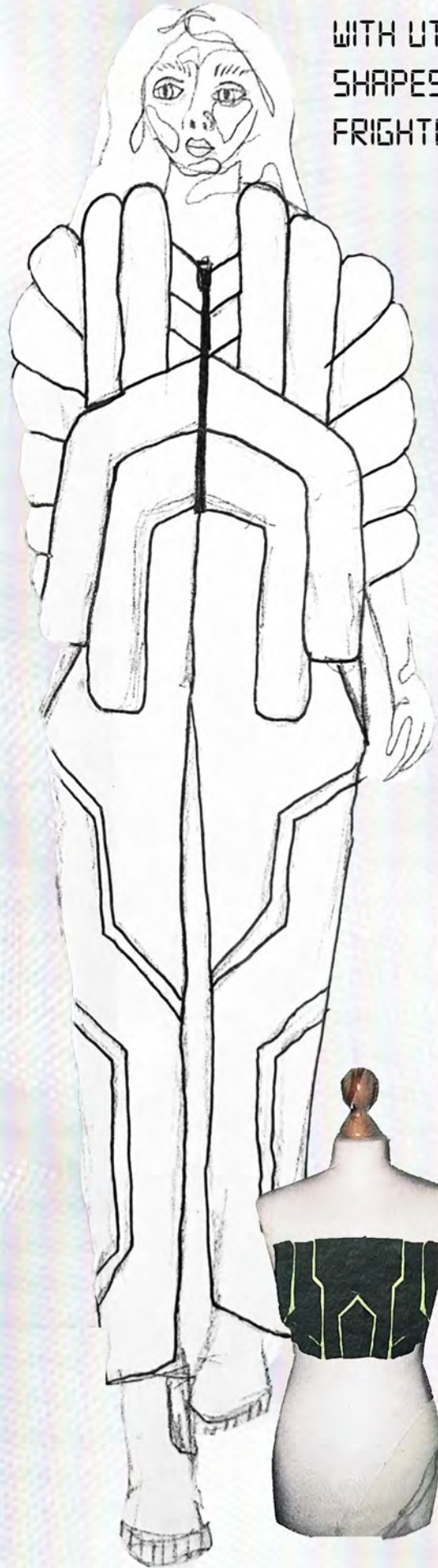
# POWER AND CONTROL



CONTRASTING THE ANGULAR GEOMETRIC SHAPES  
IN CIRCUITRY TO THE ORGANIC ROUNDED FORMS  
IN THE BRAIN.



THE ORGANIC ROUNDED FORMS HAVE CONNOTATIONS WITH UTOPIAS AND CHILD-LIKE PLAYFULNESS SO THESE SHAPES ARE USED IN CONTRAST TO THE BLEAK AND FRIGHTENING DYSTOPIAN IMAGES.



ANGULAR AND  
ROUNDED FORMS

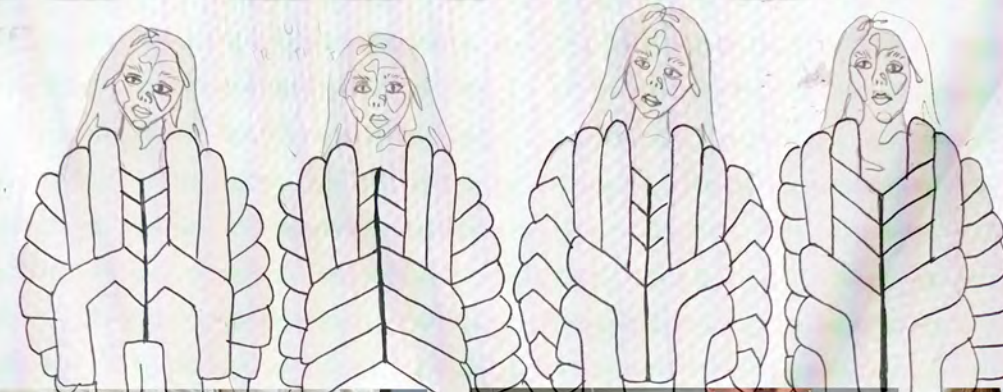


CREATING INNOVATIVE  
FORMS AND SILHOUETTES  
WITH WADDLED PANELS.

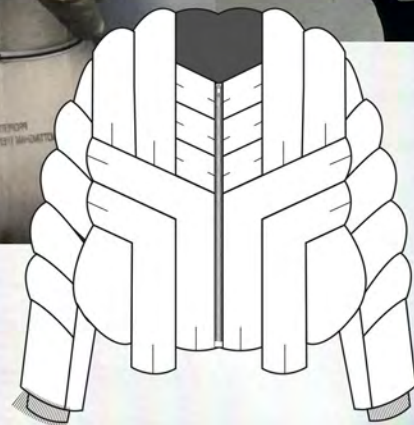


ANGULAR AND  
ROUNDED FORMS.

# JACKET DEVELOPMENT



EXPERIMENTATION  
WITH AMOUNT OF  
STUFFING AND  
THE WAY THE PANELS  
INTERACT AND  
FLOW TOGETHER.



POCKET DETAILING IN SIDE PANEL FOR FUNCTIONALITY.  
FUNCTIONALITY IS BEAUTIFUL.



SQUARE ARMHOLE DEVELOPMENT.



LINEAR STITCH DETAILING FROM CIRCUITRY RESEARCH



SYMMETRICAL PRINT ON RIB TO CREATE A GLITCH EFFECT.



HIGH NECK TOP TO SHOW UNDER THE PUFFER COAT



ANGULAR SHAPE DEVELOPMENT IN TROUSER PANELLING.

# TOP AND TROUSER DEVELOPMENT

DETACHABLE SLEEVE  
UNZIPS AND  
TRANSFORMS  
INTO A BAG.



# TRANSFORMATIVE

# SLEEVE

DRESS WILL HAVE THE  
METALLIC MOIRE PRINT  
IN LARGE SCALE.

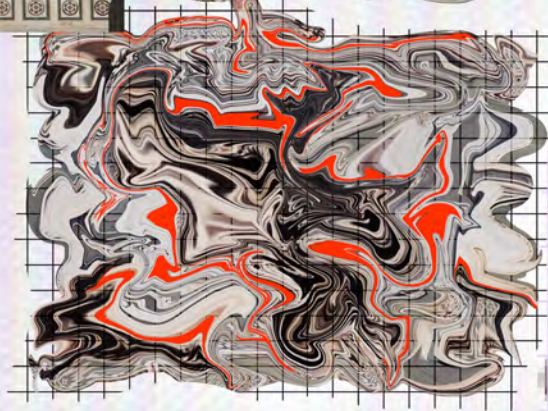


DETACHABLE  
SLEEVE  
ALLOWS FOR  
VEST TO BE  
WORN UNDER  
PUFFER  
JACKET  
FOR A HIGH  
NECK LOOK.

GLOVE DETAIL TRANSITIONS  
INTO BAG HANDLE.







# PRINT DEVELOPMENT



INITIALLY INSPIRED BY THE RENAISSANCE BUILDINGS I SAW ON MY TRIP TO FLORENCE, I APPLIED MY RESEARCH INTO GLITCHING TO THE PHOTO TO START THE BASIS OF MY PRINT EXPLORATION. IT WENT THROUGH MANY ITERATIONS OF COLOUR WAYS AND GRID VARIATIONS. I WANTED THE ABSTRACT PRINT TO COMMUNICATE THE FUTURISTIC ELEMENT TO MY PROJECT SO I INTRODUCED METALLIC ELEMENTS AND PIXELLATED SECTIONS. THE PRINT STILL SEEMED FLAT SO I PRINTED A VERSION OF IT AND EDITED THIS BACK ON TOP. THIS CREATED MORE DIMENSION AND DEPTH. ADDING IN THE HAND CRAFTED ELEMENT INTO THE DIGITAL PRINT ENCAPSULATED MY THEME OF MAN VS MACHINE WELL. I DECIDED TO MOVE AWAY FROM THE GRID AS THIS WOULD MAKE MATCHING THE PRINT WHEN SEWING VERY DIFFICULT AND OPTED TO INTRODUCE THE MOIRE GLITCH EFFECT FROM MY RESEARCH, THIS IS MUCH MORE EFFECTIVE AND VISUALLY STIMULATING.





## PRINT OUTCOMES



THESE ARE THE TWO MAIN PRINTS WITHIN MY COLLECTION, ONE OFFERING A LARGE SCALE IMPACTFUL PLACEMENT PRINT AND THE OTHER AN ENGINEERED, CONTOURED PRINT DESIGNED TO SIT IN A CERTAIN WAY ON THE BODY. BOTH EMBODY THE FUTURISTIC AND TECHNOLOGICAL FEEL TO MY WORK WHISLT BEING VISUALLY PLEASING RATHER THAN PURELY FUNCTIONAL.

# INNOVATIVE FABRICS



USING A WIDE RANGE OF TECHNICAL FABRICS ALONGSIDE BLENDING MY OWN TEXTURES TOGETHER, MY COLLECTION IS STRUCTURAL AND BUILT WITH DURABILITY AND LONGEVITY AT THE FOREFRONT. THE SHEEN ON THE TECHNICAL SATINS TIE IN WITH THE SHOWSTOPPING COLOUR SHIFTING REFLECTIVE IRIDESCENT FABRIC.

MY ADDITION OF PRINT ALSO PULLS IN THE BEAUTY SIDE OF MY RESEARCH IN CONJUNCTION WITH FUNCTIONALITY.

USING A LIGHT REACTIVE FABRIC TO COMMUNICATE THE TECHNOLOGICAL SIDE OF MY RESEARCH. IT ALSO HIGHLIGHTS THE IDEA OF AN ENLIGHTENMENT AND THE POWER OF LIGHT WITHIN THE RENAISSANCE.

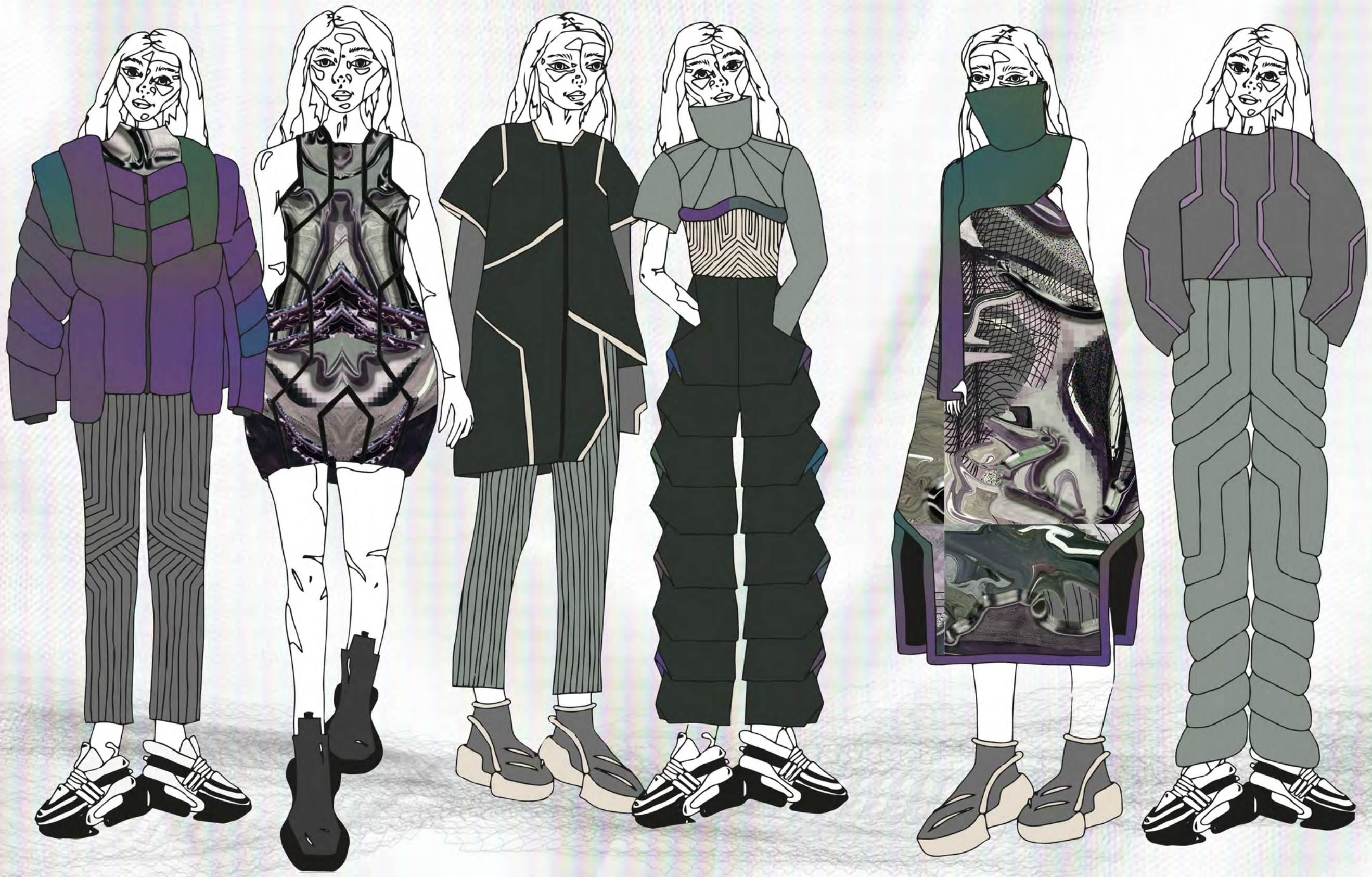
ORGANIC ROUNDED FORMS COMBINED WITH INNOVATIVE REFLECTIVE FABRIC CREATE A SPECTACLE WHEN IN MOVEMENT.

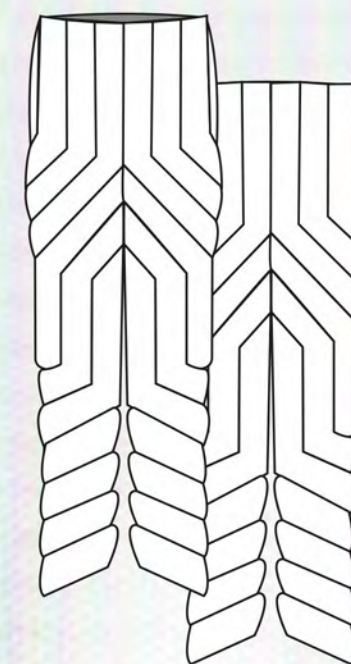
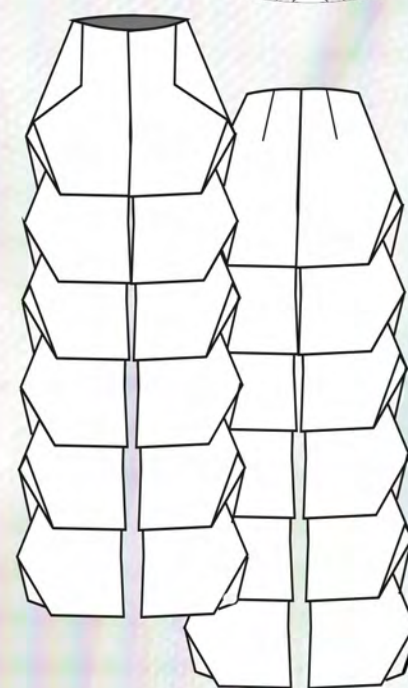
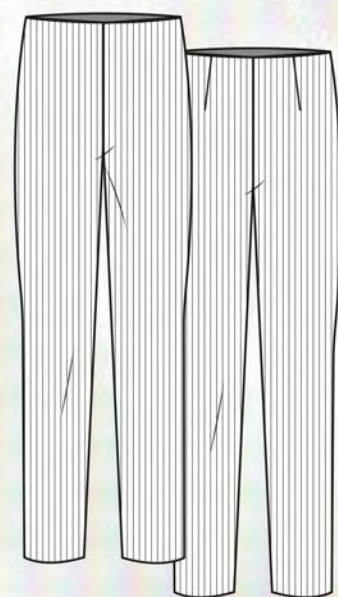
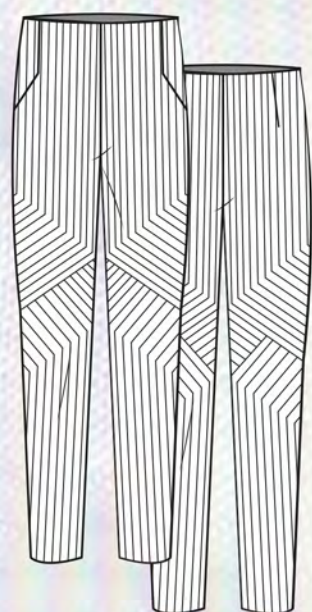
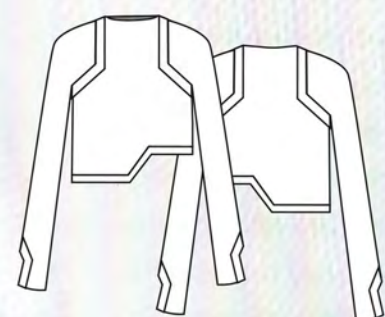
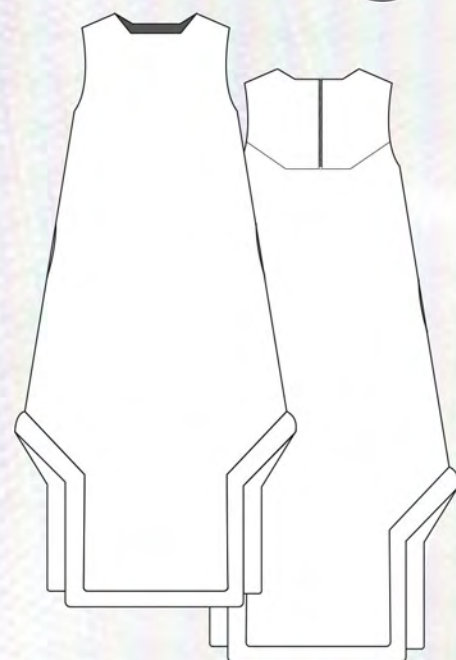
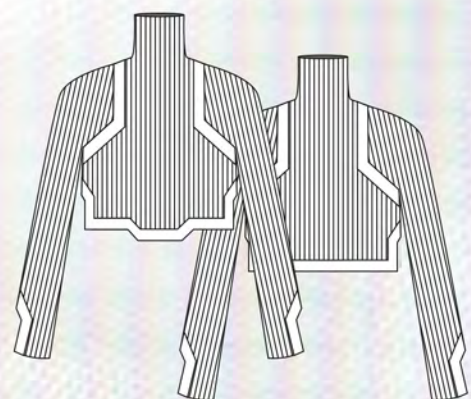
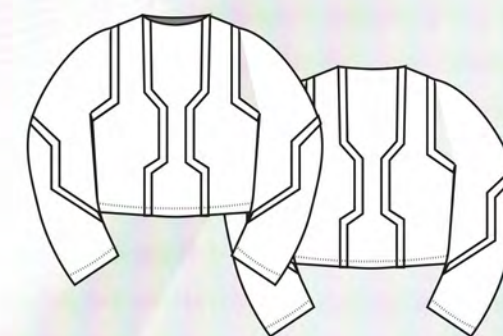
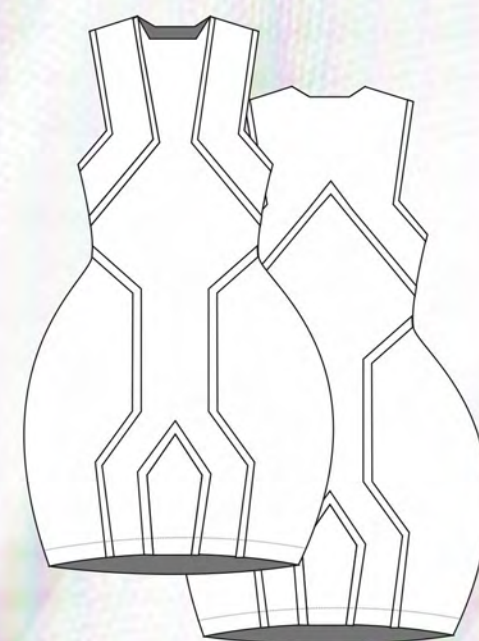
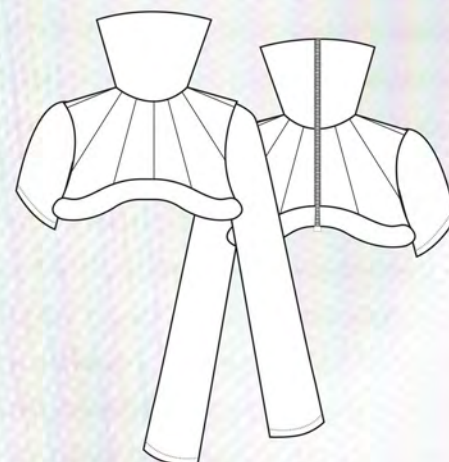
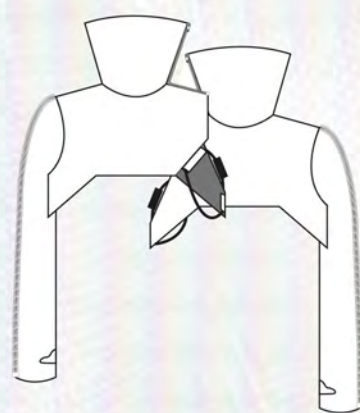
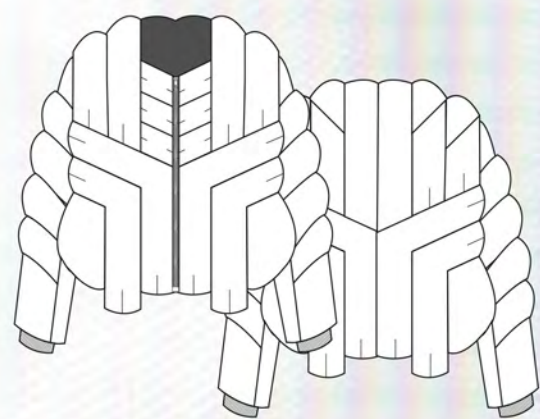


WITH FLASH



NATURAL LIGHT





**RANGE PLAN**



