



# THE ENDLESS LOOP

EXPLORING THE CYCLE OF BIRTH, GROWTH, AND DECAY

MENSWEAR COLLECTION

BROOKE SHEERIN

*Brooke Sheerin*



Researching into the Chernobyl disaster of 1986 and the city of Pripyat, where nature is returning around the collapsing infrastructure. This circularity of life and death that we see within nature inspired me to look at dualities within life.



## SOLOSTALGIA

The distress that is caused by environmental change impacting on people while they are directly connected to their home environment.

Exploring artists such as Bridget Riley who use experimental line work to create seemingly 'never-ending' patterns, distorting the viewer. The contrast between the straight lines placed in a curved pattern creates a duality. This, paired with the curved shapes of ouroboros and biblical angles informed my fabric choices and silhouettes.

Experimenting with pressing dead flowers to inform print and silhouette development, through working on a mini stand



90's rock subculture

i looked into the 90s punk fashion trend and how people dress in an anti-fashion way to go against the general population. I want to include elements of anti-fashion and punk within my collection.



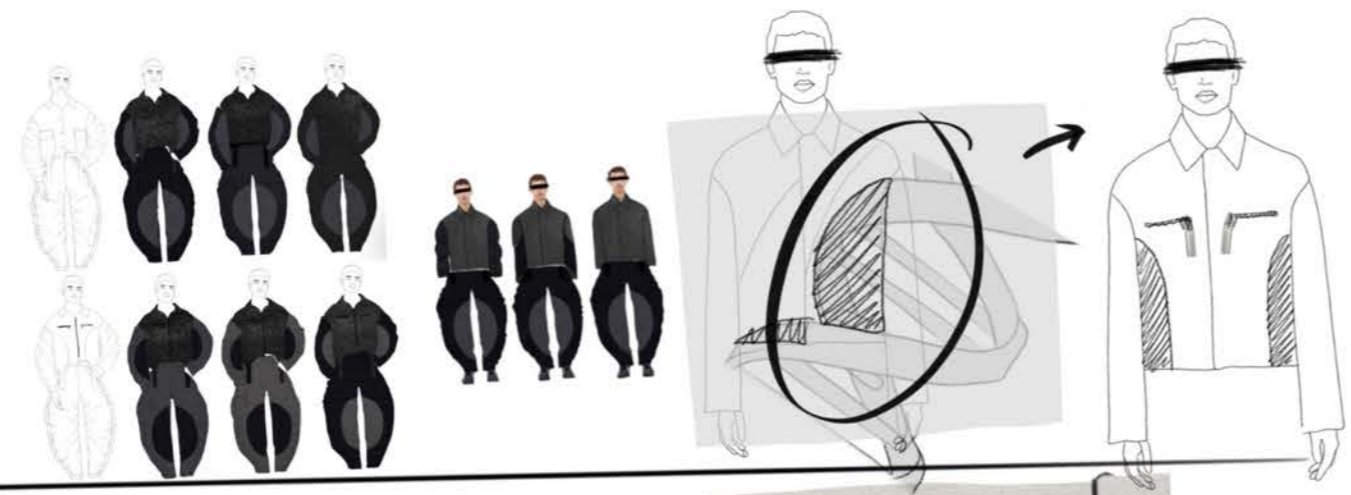


As my concept for this collection is based around death and decay, my colour pallet is made up of dark, cold, tonal shades of black/grey. However, luxury material choices with different finishes, as well as monogram/pinstripe create a harmonious pallet.

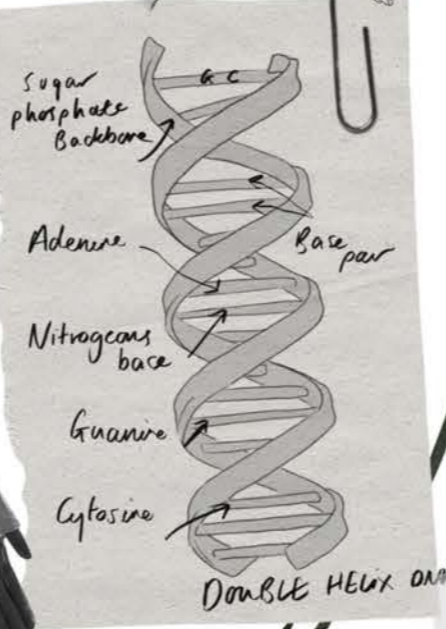
*Colour pallet/fabric board*



# BIKER JACKET DESIGN DEVELOPMENT 1/2

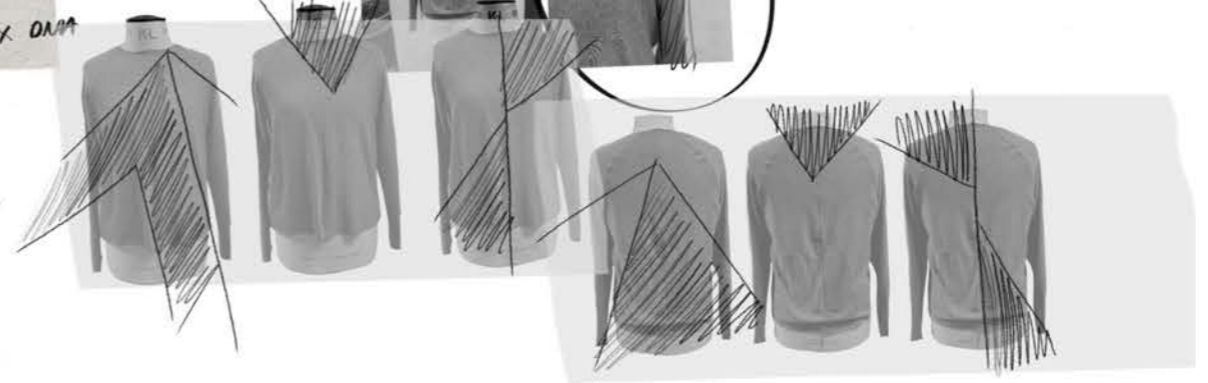


## RAGLAN SLEEVE KNIT JUMPER



Seam to be added to sleeve on back.

Fabric needs to be checked for PINSTRIPES?

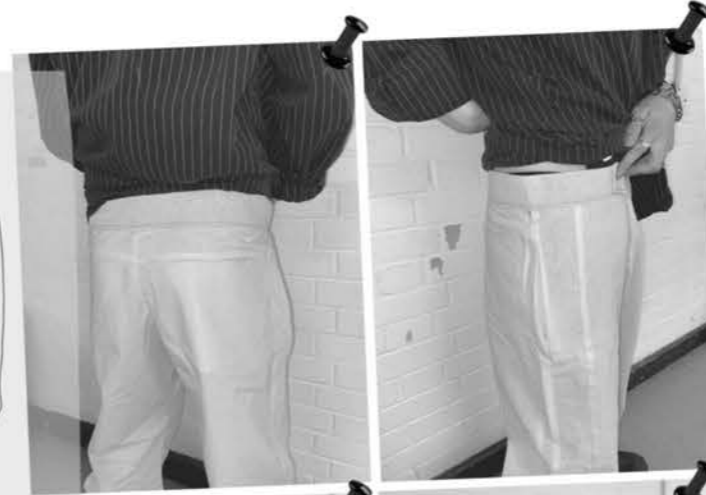
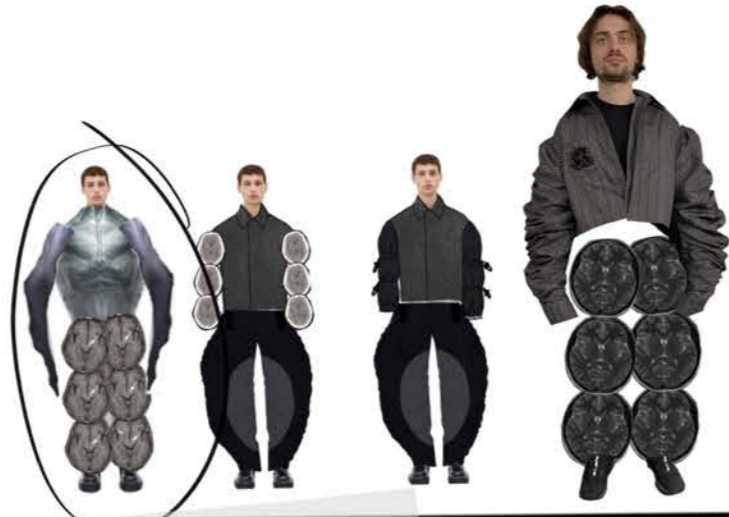


# BIKER JACKET 2/2

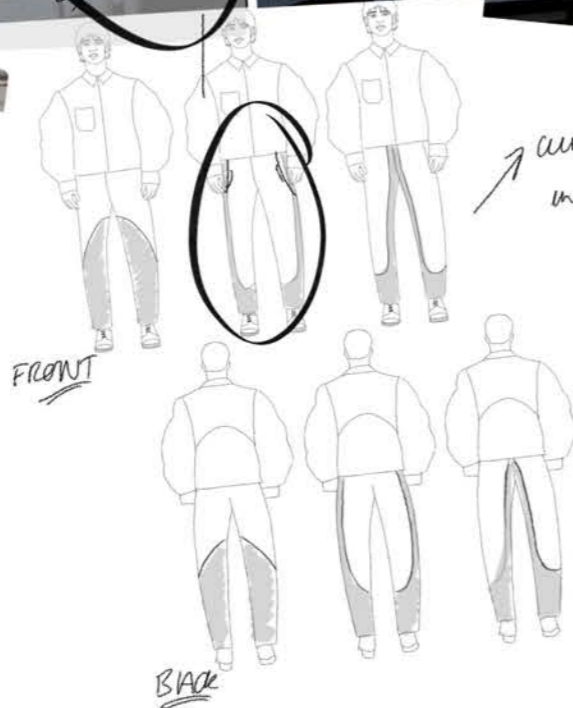








Sample of curved seam.

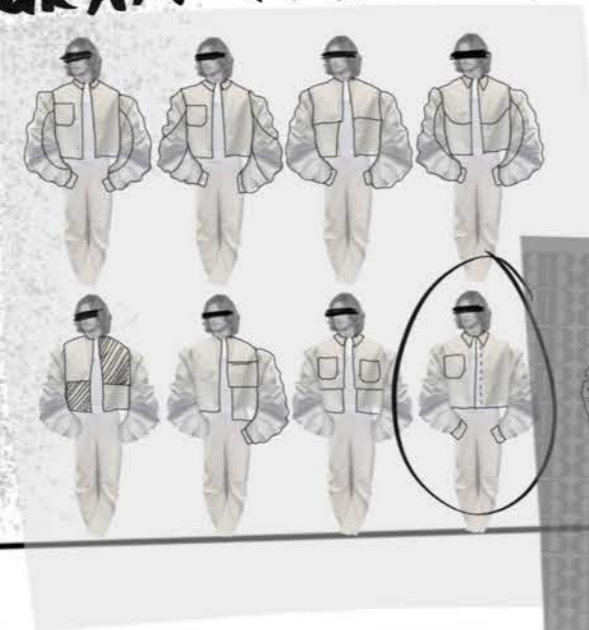


FRONT

BACK

curved seam towards bottom in the side with pocket

# MONOGRAM PRINT SHIRT

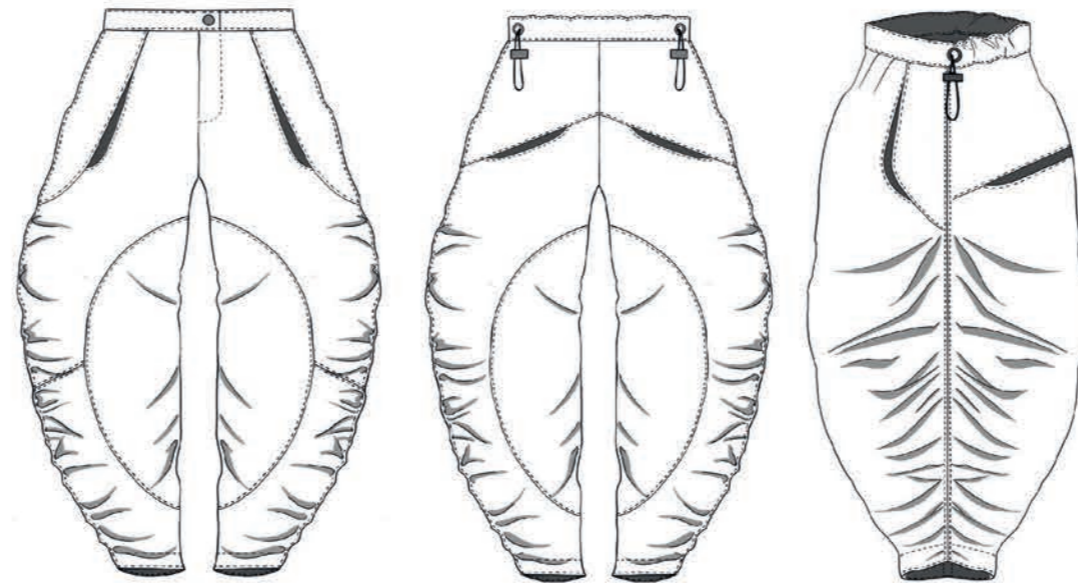
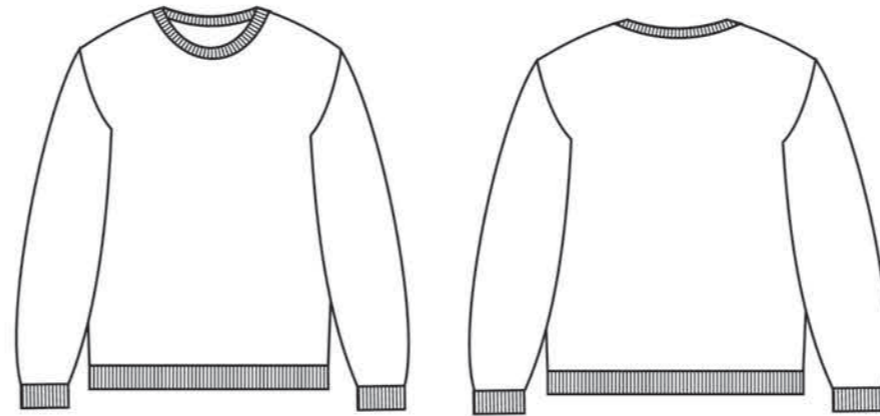
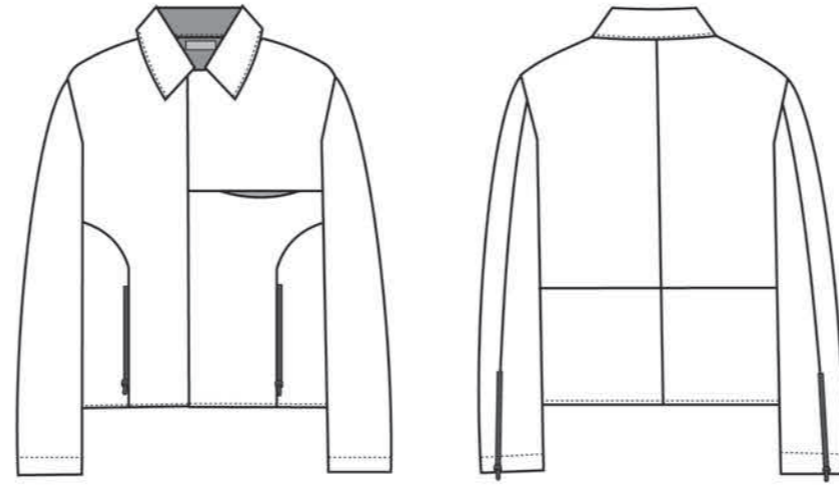






Photobrot  
Nottingham  
02/05/23

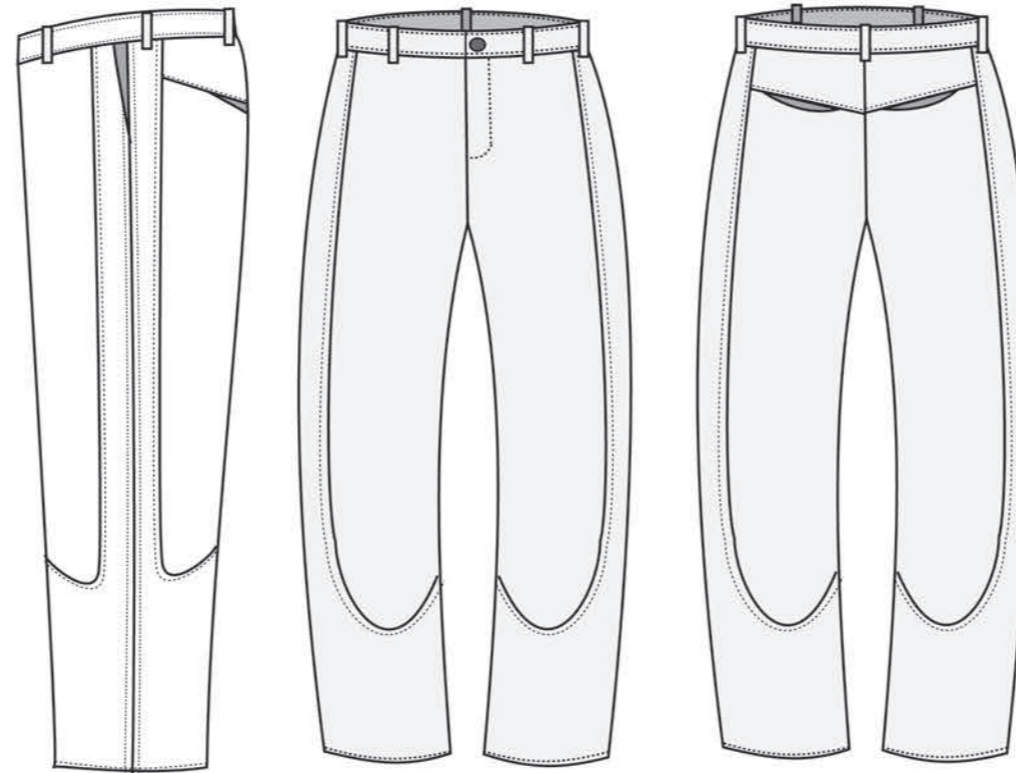
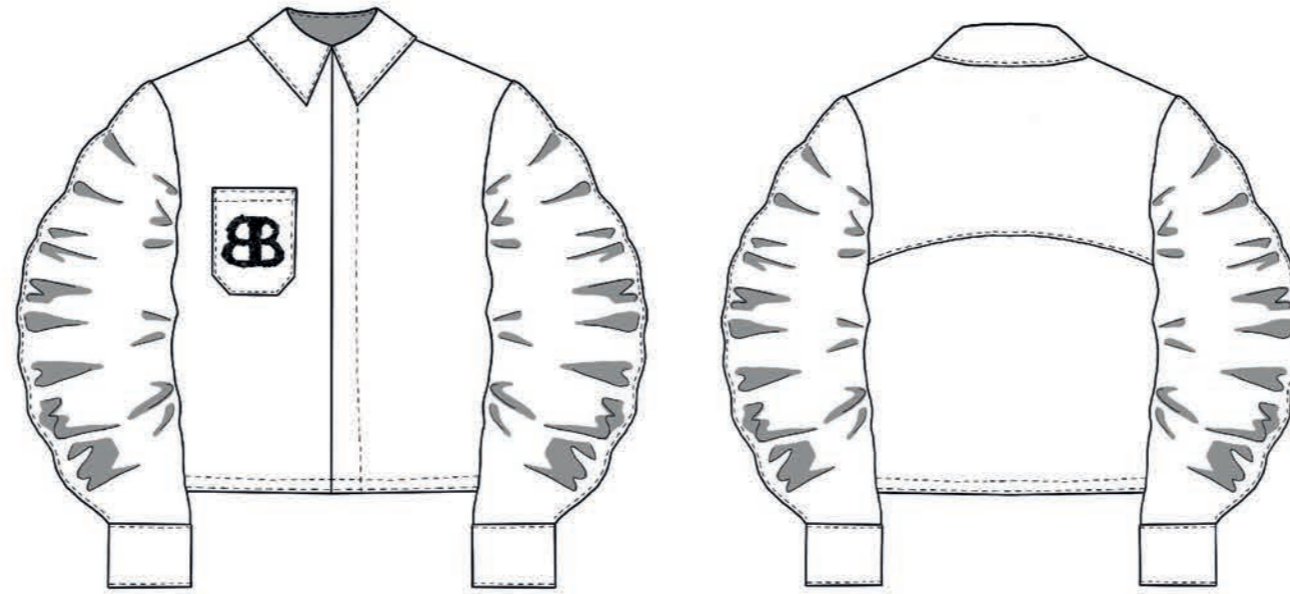
*Fabric and trims*



*Look 1*



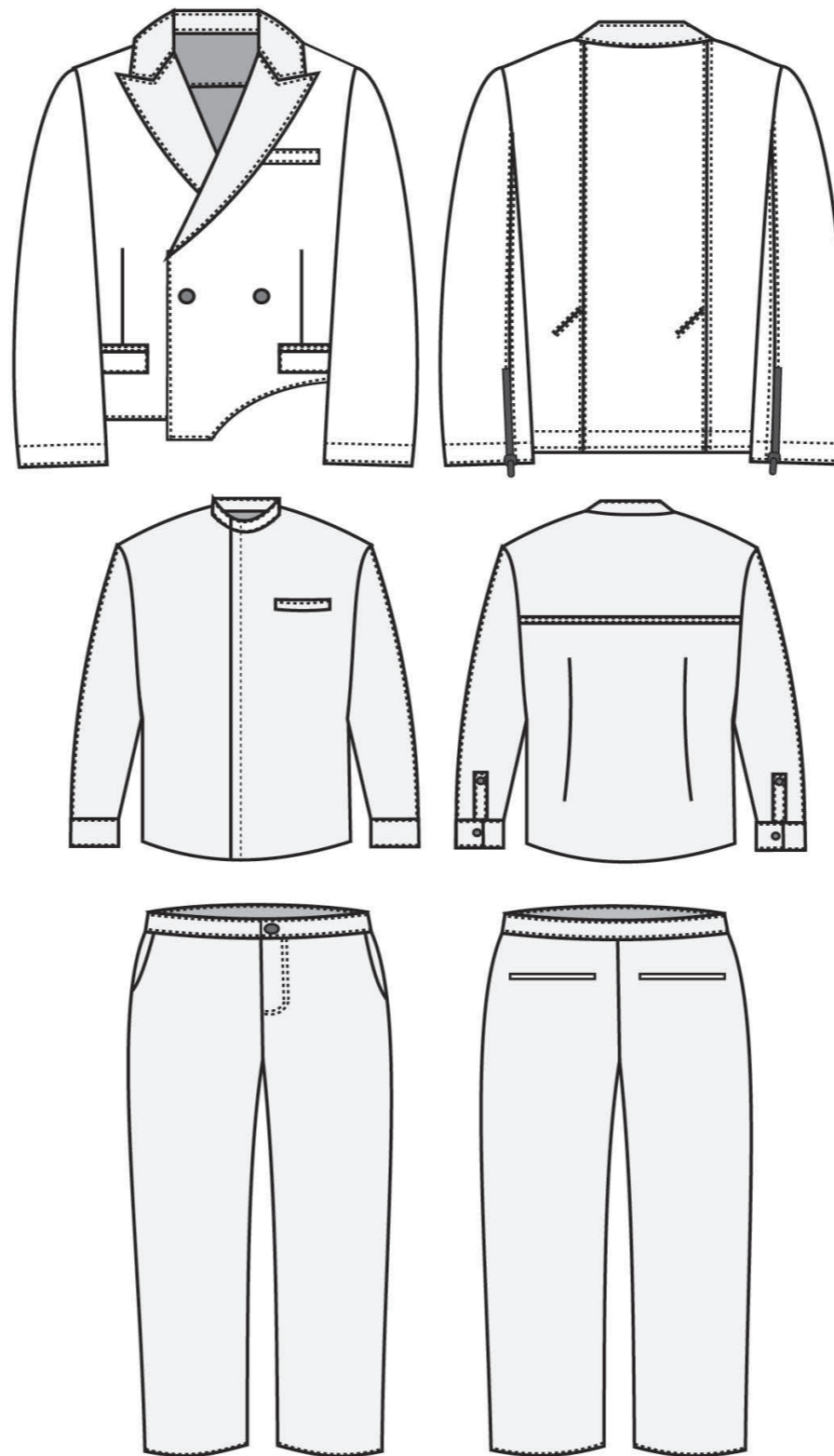
*Fabne and trims*



*Look 2.*



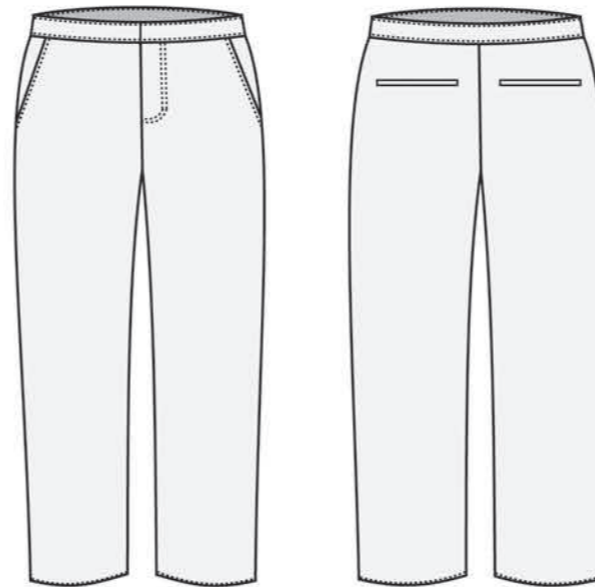
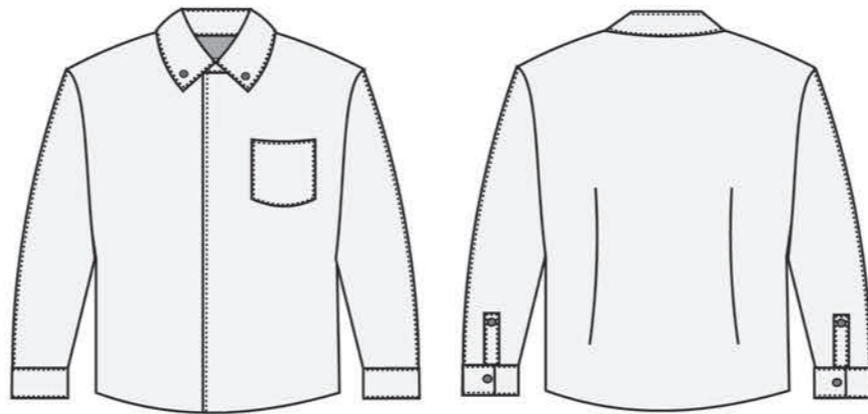
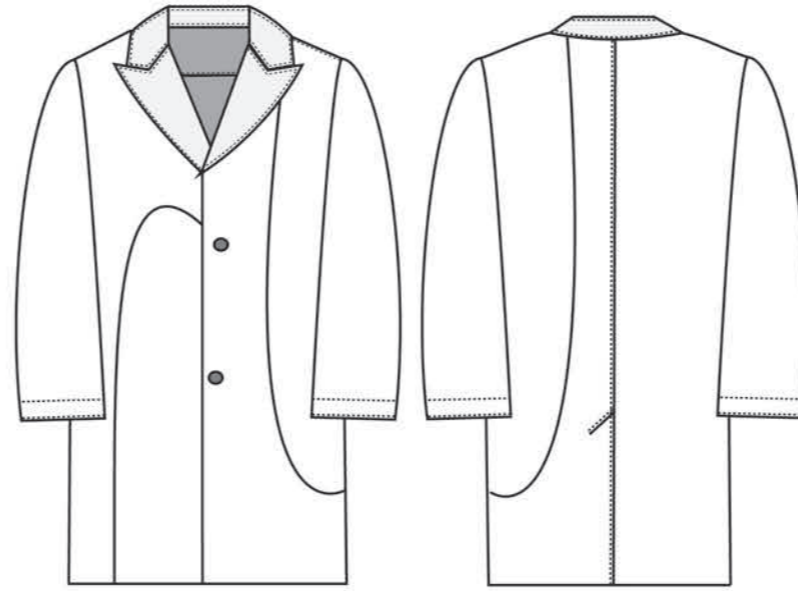
*Fabric and trims*



*Look 3*



*Fabric and trims*

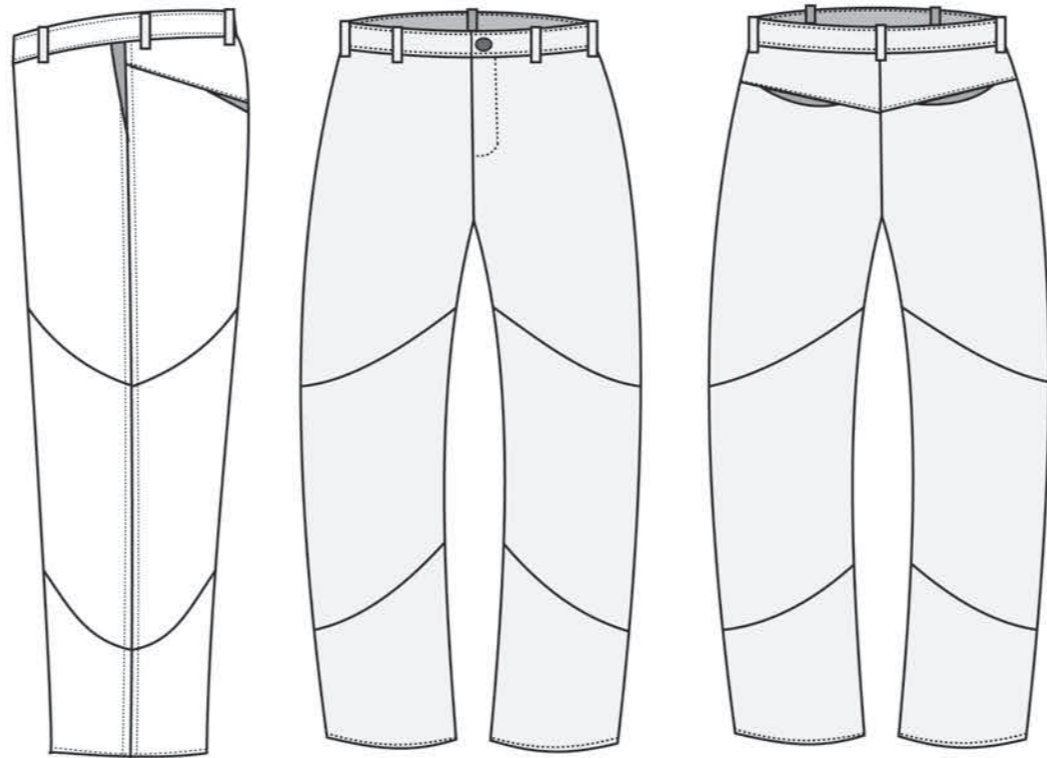
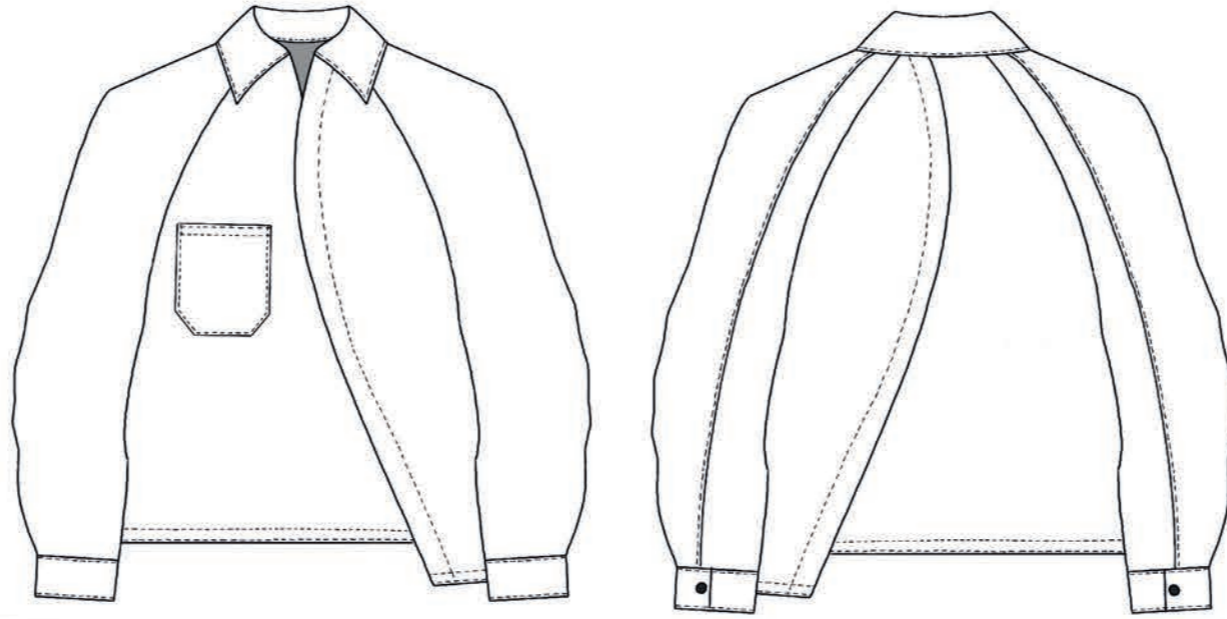


*Look 4*





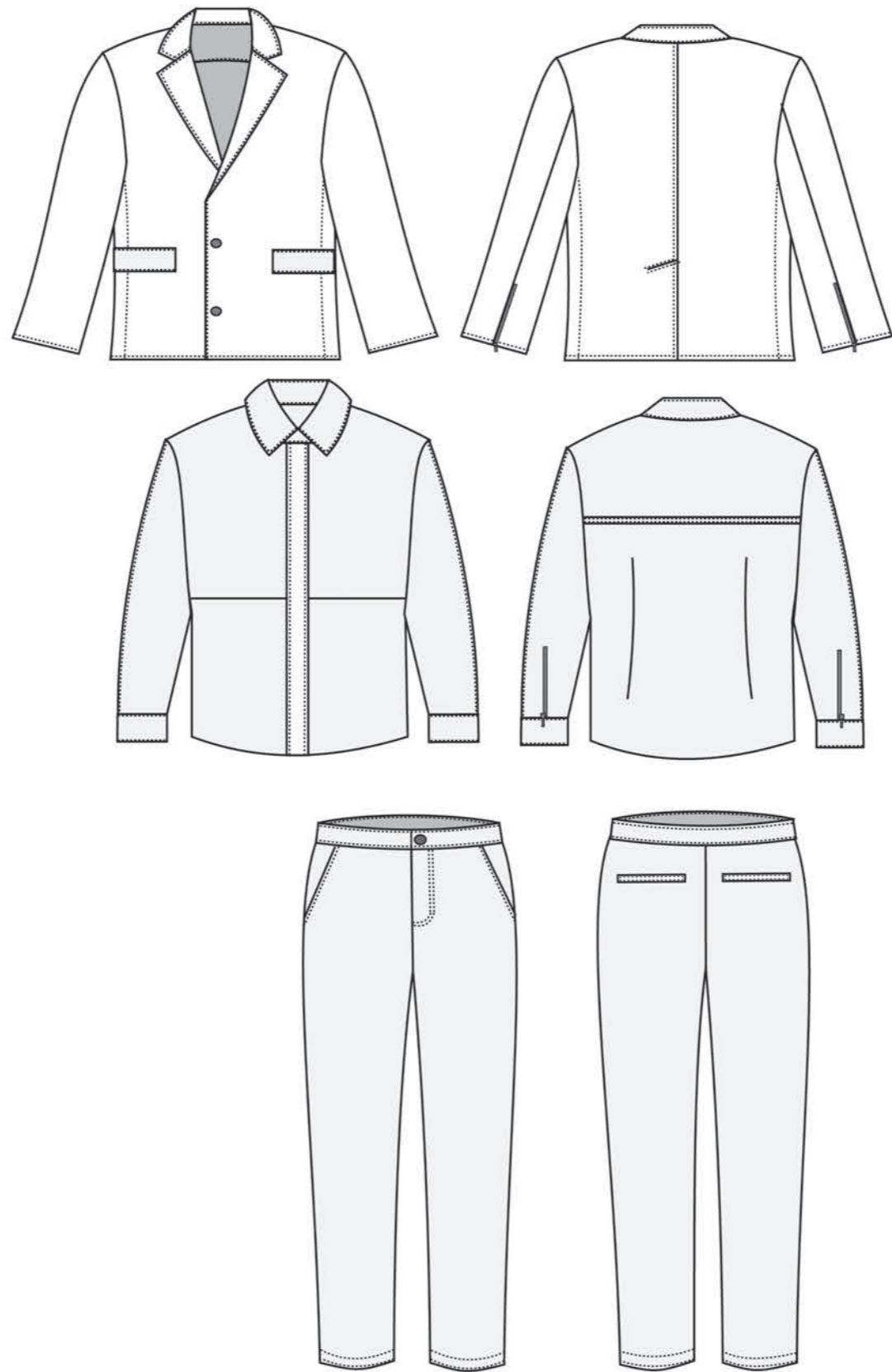
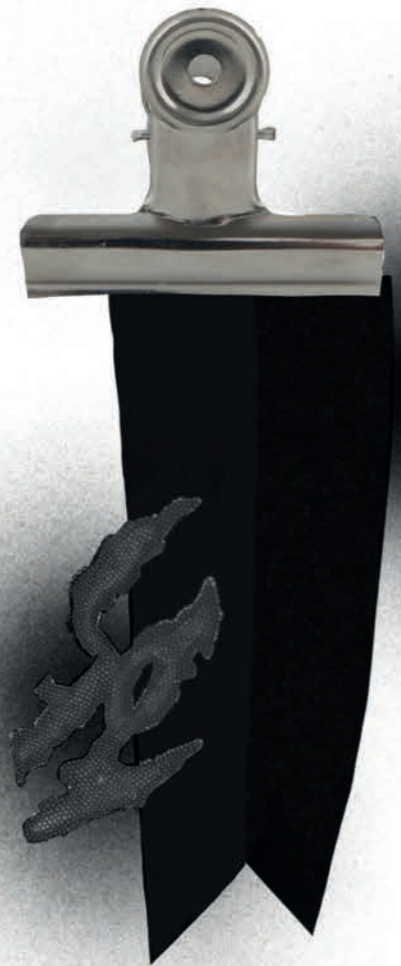
*Fabric and trims*



*Look 5*



Fabric and trims



Look 6

