

or is it?

or is it?

are you really here?

This is neither here, nor there

壳 上 帳

Esme

正四〇枚

# NOTE BOOK

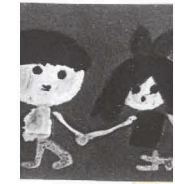
Most advanced quality  
Gives best writing features

Knitwear year 3

Esme Gill - Brown

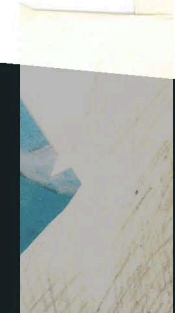
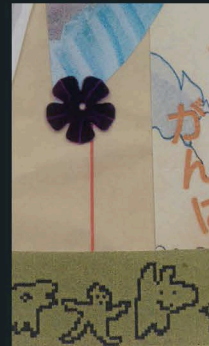
Nottingham Trent



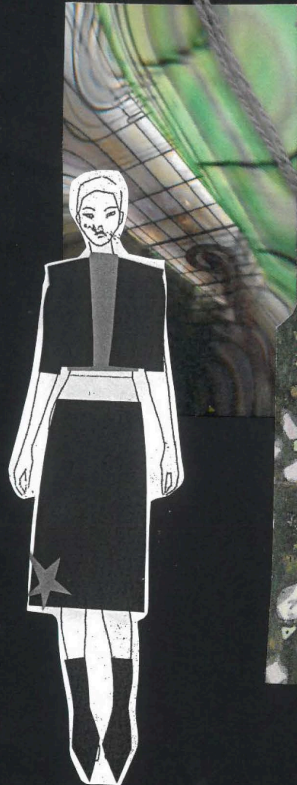
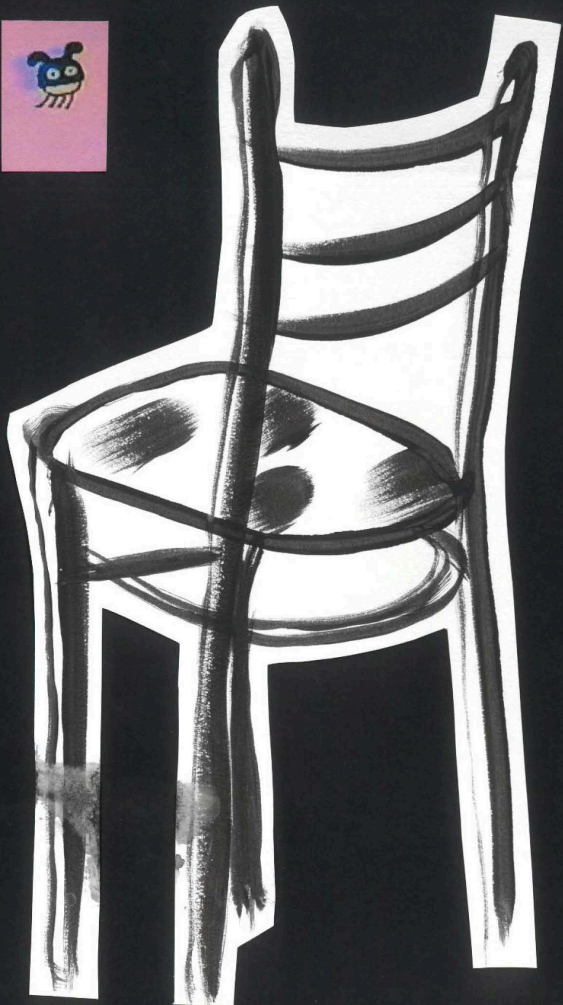
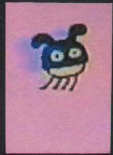


価	売上金額	受入金額	取資	差引残高	年
					月 日

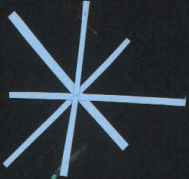
The concept of this collection derives from the idea that people are constantly distancing themselves from being present and are subconsciously uncomfortable with their existence. Somewhere between the futuristic technology and comforting nostalgia, there must be a present feeling within us, and this feeling is what the collection aims to discover. Imagining this feeling and present space within us resulted in a personal and conceptual collection with a wide range of reference points. I visualise my concept through the use of nostalgic imagery, soft, hazy colours, characterful motifs, intricate embellishment and silhouettes that re-imagine the classics. A love for textiles has resulted in a good understanding and an interest in sensory recall; in particular, the collection plays with the sense of touch, smell and sound as a way to evoke a mental response in the consumer. The sound of gentle chimes from the metallic features, the use of soft and silky yarn and keeping the garments enclosed with scented sheets aims to create a calming space in which to think, relax and be present.



Mood board



Sunday of next week



colour +  
texture



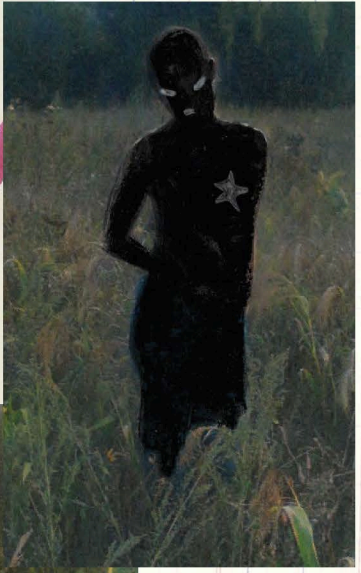


上金



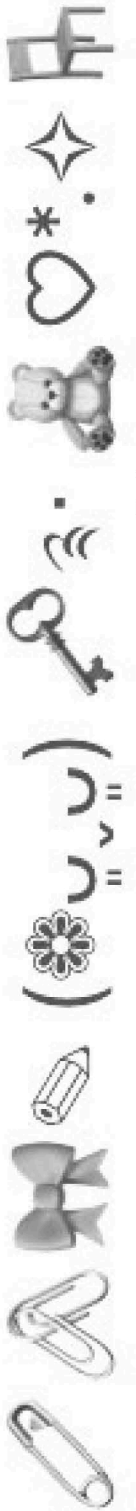
*inbetween states of mind*

*neither here nor there*

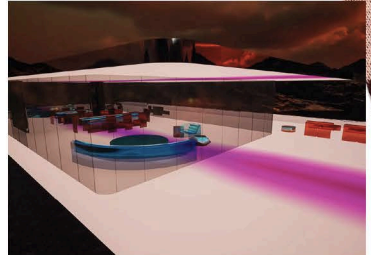


Primary research explores a mental state  
of not belonging and loss of the present  
moment





tubular Jacquard



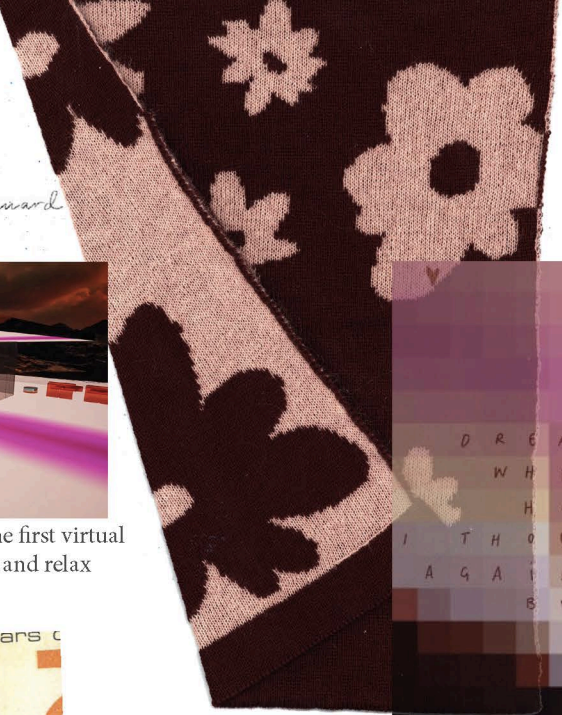
The Mars House- Krista Kim. The first virtual house. a place to escape to think and relax



windows of memory  
momentary peace



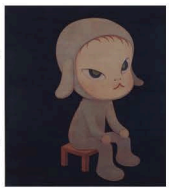
free hand intaria



WHAT'S THE MATTER WITH YOU  
DREAMING OUT OF THE WINDOW  
WHERE DID YOU GO?  
HOW DID YOU GET BACK?  
I THOUGHT I MIGHT NEVER SEE YOU  
AGAIN  
BUT YOU CHOSE TO STAY

all our memory is  
stored as pixels

Yoshitomo Nara, Sleep-  
less Night Sitting



# \* Shape development

殿

住所

電話

( )

番

殿

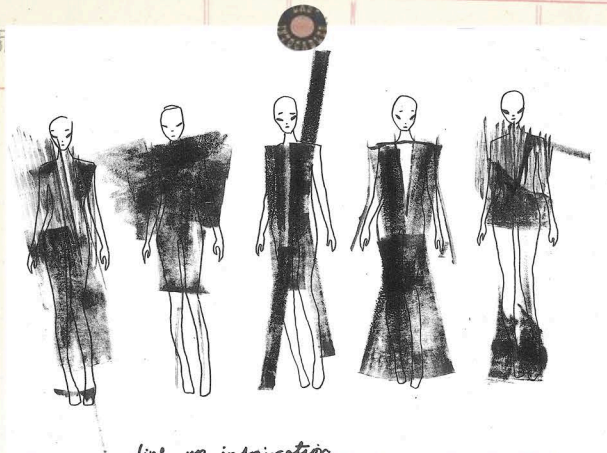
住所



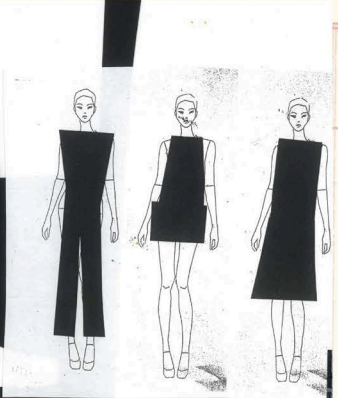
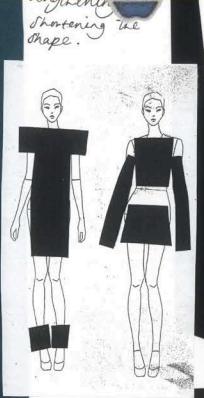
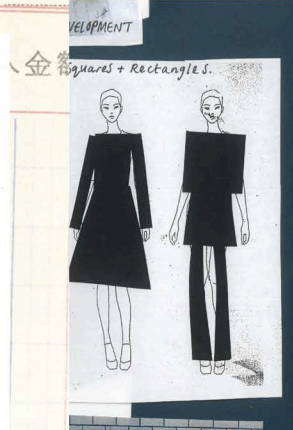
番

浅高

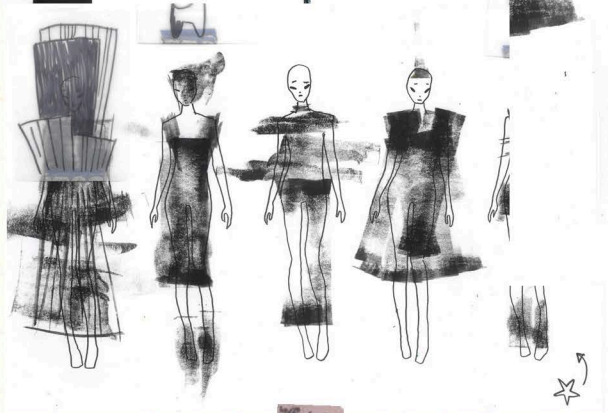
年  
月 日



line up in inspiration



売上金額



using Squares as a base shape, collage, print and draw to start design

\* Esme Gill-Brown \*  
\* Knitwear Design \*



Feminine yet slightly androgynous.



a.jpg 2a.jpg 3a.jpg 4a.jpg IMG\_20221103\_11

0.jpg IMG\_20221103\_113300.jpg IMG\_20221103\_113303.jpg IMG\_20221103\_113310.jpg IMG\_20221103\_11

03\_114022.jpg IMG\_20221103\_114321.jpg IMG\_20221103\_114330.jpg IMG\_20221103\_11

103976.jpg IMG\_20221103\_120347.jpg IMG\_20221103\_120444.jpg IMG\_20221103\_12

121618.jpg IMG\_20221103\_12

Yesterday

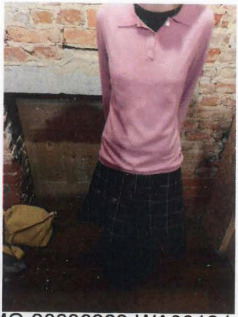
3D Visual research

inspires design and texture.  
Collaging with 3D research  
and primary research.

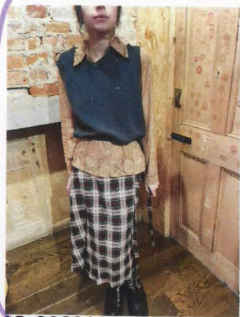




# LAYERING VINTAGE CLOTHES FROM ALL DIFFERENT TIME PERIODS.



IMG-20230222-WA0016.jpg



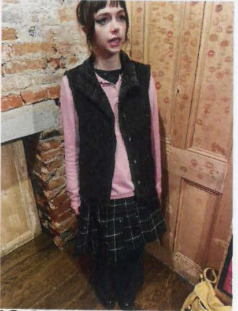
IMG-20230222-WA0017.jpg



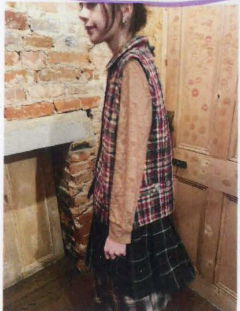
IMG-20230222-WA0018.jpg



IMG-20230222-WA0019.jpg



IMG-20230222-WA0020.jpg



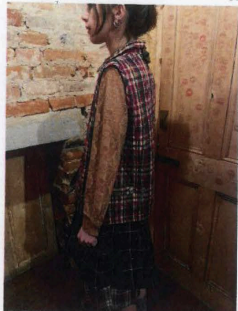
IMG-20230222-WA0021.jpg



IMG-20230222-WA0022.jpg



IMG-20230222-WA0023.jpg



IMG-20230222-WA0040.jpg



IMG-20230222-WA0041.jpg



IMG-20230222-WA0042.jpg



IMG-20230222-WA0043.jpg

Surreal element of fabric 'coming to life' Crochet flowers on

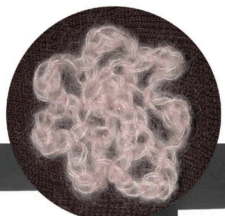


layered skirts + pleats.  
 elongated top half of silhouette  
 vest and shirt. LAYERS but  
 sleek.



Mix of 3D + 2D.  
 flowers on all...

(idea for vest part...)



final fabrics

数量 単価 売上金額 受入金額 高

1 Content



Free-hand intarsia. standard domestic

fear



Double bed & integral 3x2 rib. 7G dubbed.

2 Tonlines

lost

happiness



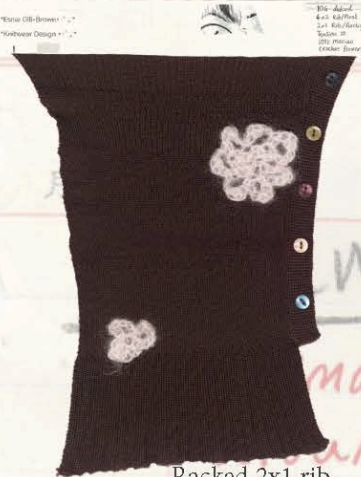
True Lace. 12G shima.

focused

Reverse plating. 12G stoll.



Double bed with inlay section. 12G dubbed.



Racked 2x1 rib, lace holes & integral ladder pleat. 10G dubbed. & hand crochet. flow-

sadness

confusion



Plain knit with felting. Chunky domestic.

anxiety

calmness

3 dream



Partial blister jacquard. 12G shima.

ping



Box pleat with felting. 10G dubbed.



Reverse plating. 12G stoll.

anger

stress

pick's to inform

"Art is col

lonliness /

creatur

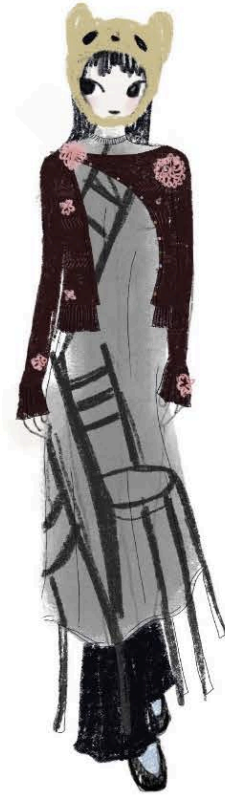
colour: N

dreaming /

bin

colour: blue

Collection line up



# Contentment

as an animal: Teddy bear (bear)

colour: yellow, blue

table.  
pink

ise  
red.



CAD illustrations

殿

住所

電話

番

殿

住所

電話

番

年  
月 日

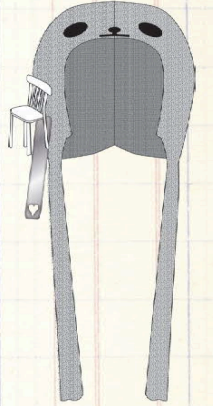
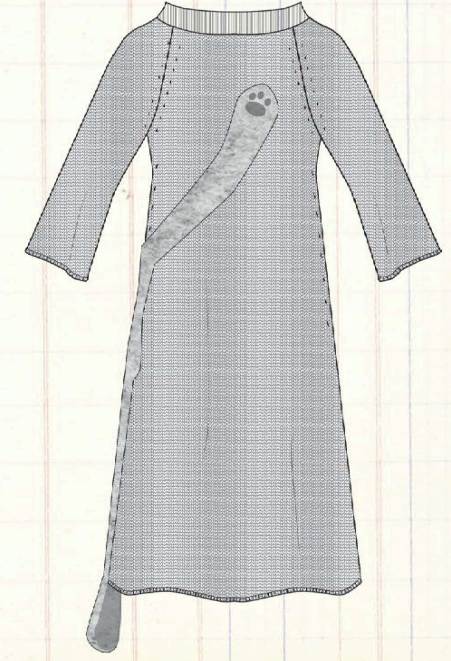
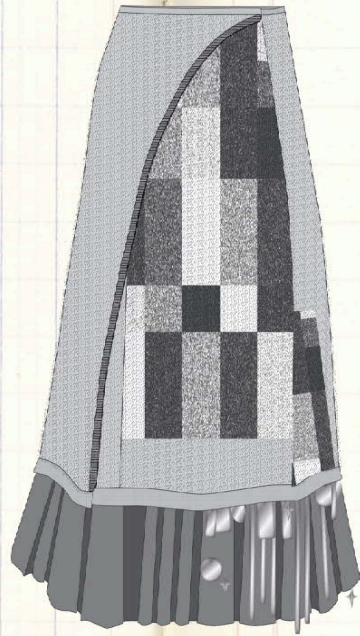
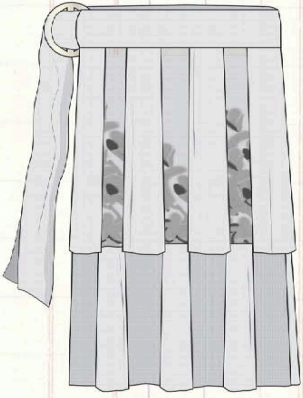
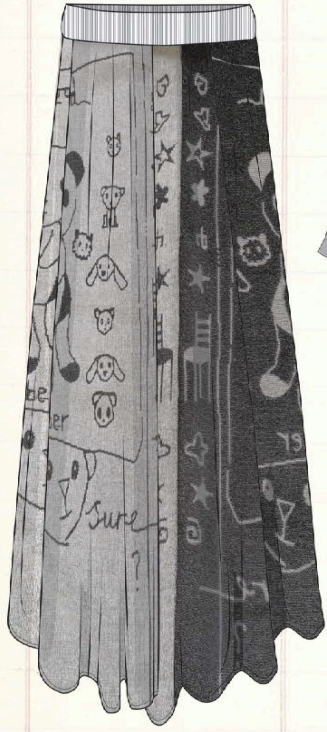
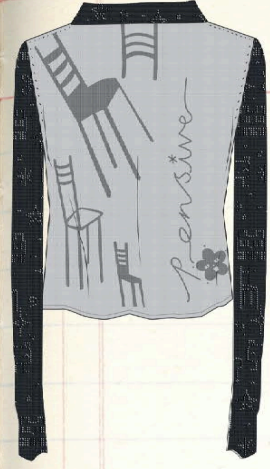
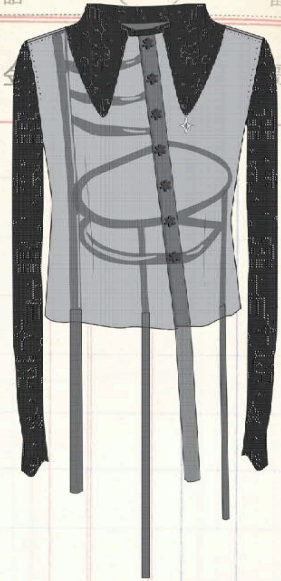
数量

受入金額

名 数

受入金額

借或貸  
差引残高





rad  
og