



↳ Scene on the Tunnel, Dorthshore, 1866 by Cresswick, Thomas (oilpainting)

↳ Legacy - Victorian - Modern, 1939 by John Piper

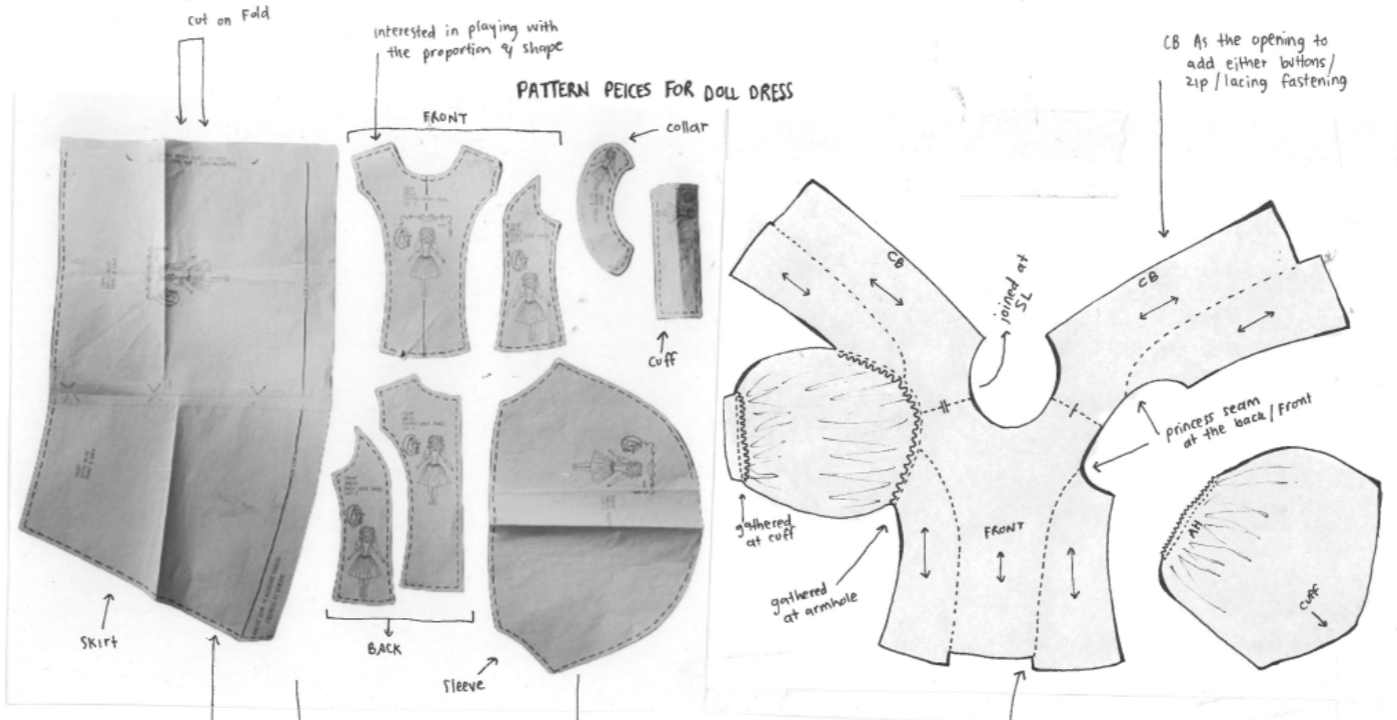


↳ Lady Florence Padget, ca.1862 (by Silvy Cassite-Léon-Louis)



↳ Victorian Mantelpiece, 1908 by La Dea, Edwin R. B. A.

↳ Evening dress, 194 (1948) collection

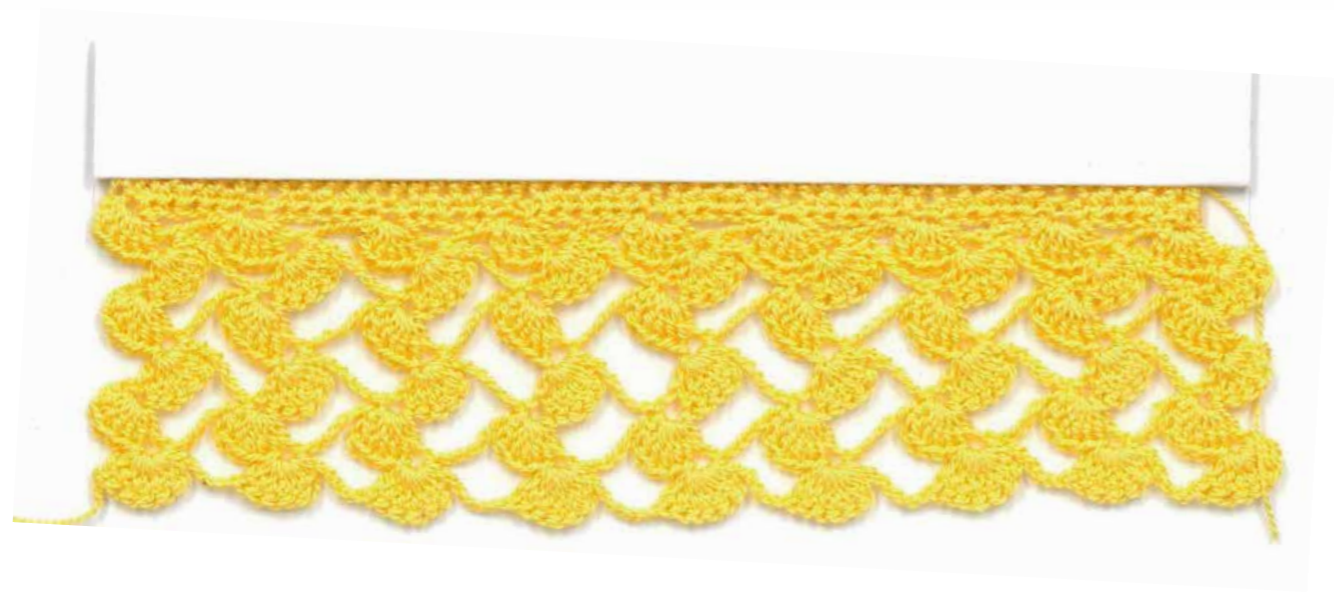
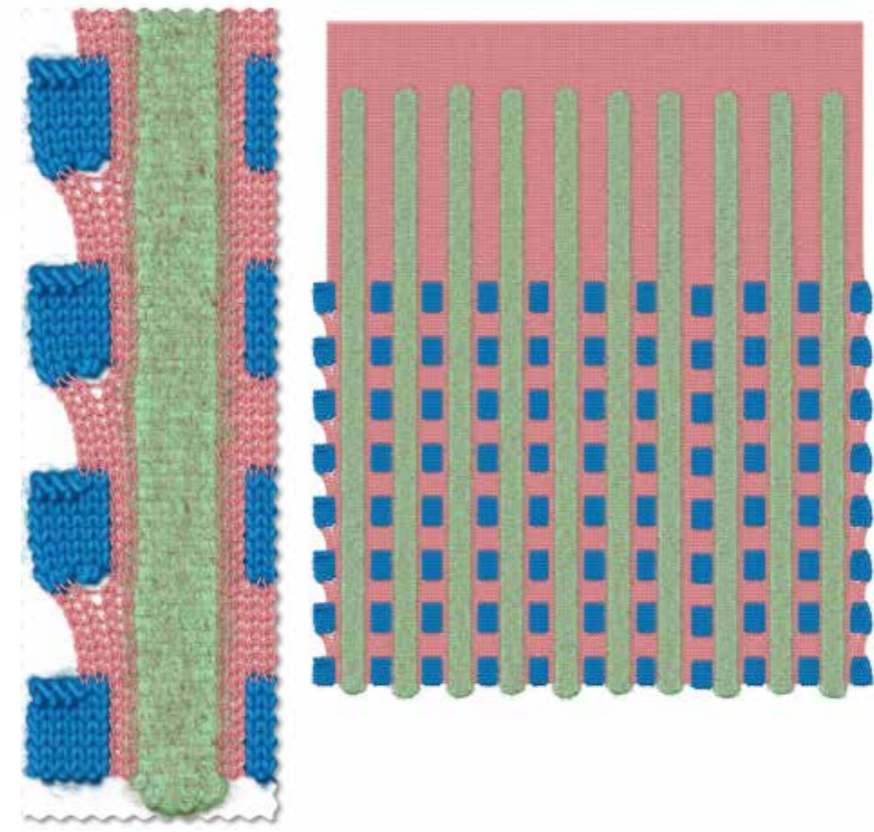
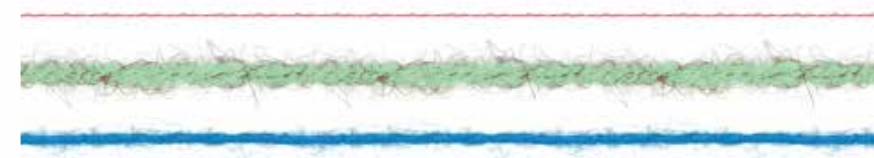
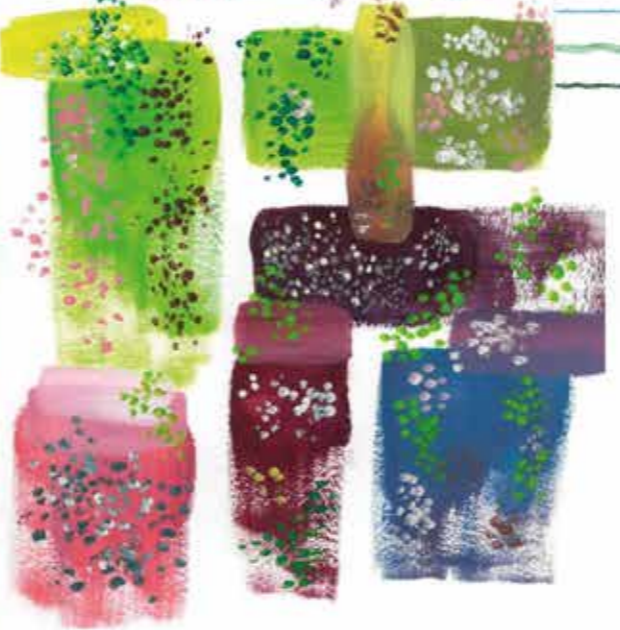
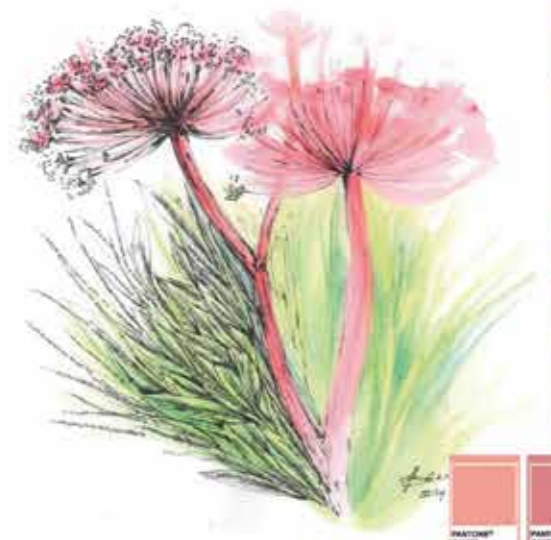
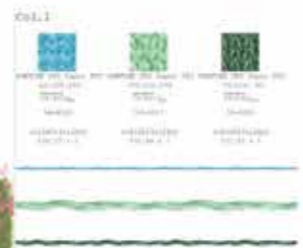
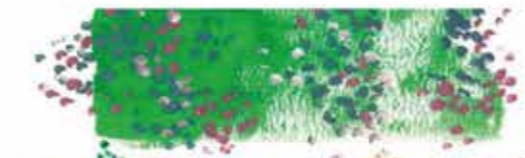
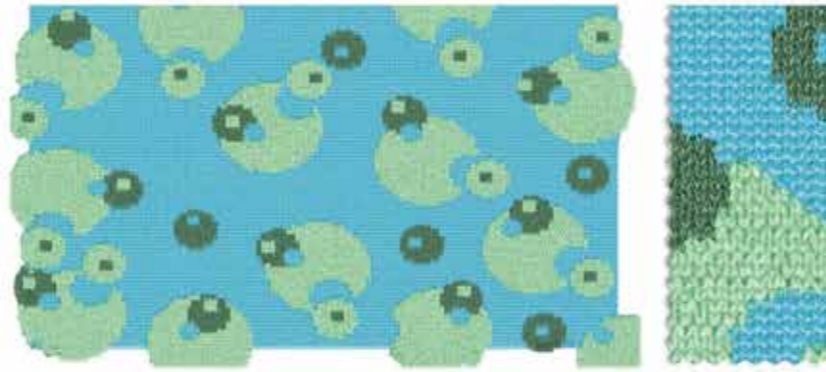


Note: Pattern instruction suggested to add pipping in the fit seams (along the front & back and cuff, collar & neckline).

↳ Interested in subverting the sleeve into the seamline (princess) fit. Also changing its shape & playing with its volume

↳ when joining the two pieces this did not align. Need to understand why and how to align this



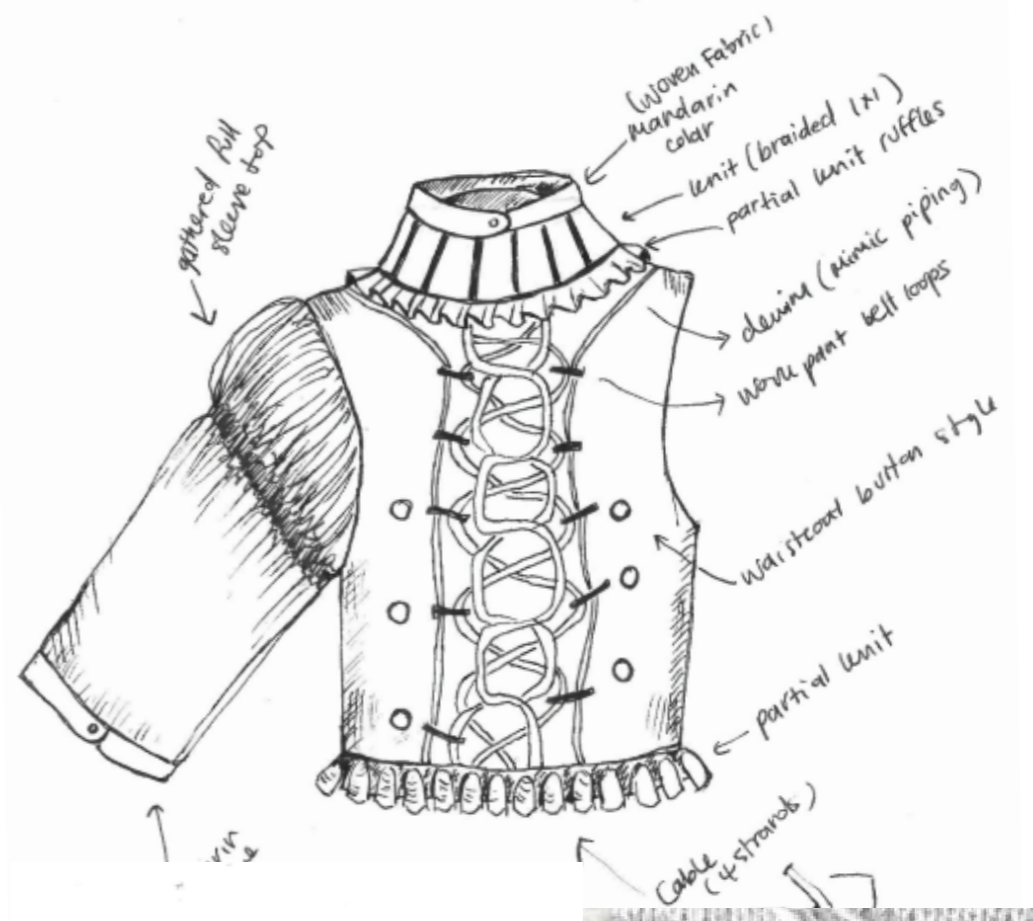




Research garment



Alexander McQueen prs fall 2015



Combination of asymmetrical lace along the V-neck with the green knots on the edges adds freshness to the style

Uniform
Chris Ran Lin

detachable sleeve using ribbon also becomes a decorative function

Sleeves

Ulta Johnson RTW Fall 2021

Audrey MacDonalde- Fall 2010

- giant bubble / pop-corn stitch design is a statement & quite a playful gesture to the jumper's classic silhouette.
- experiment with size of trims & embellishments as a classic design

The overtopping knit of low neck line with large pop corn can be quite a statement

Gift of the Duchesse of Windsor, 1974
The MET



Evening suit, 1. Duke of Windsor 1919-20, www.uk



ACNE Studios S/S 20



Gift of W.J. Beer, 1908
18th century-19th century - linen waistcoat - Met Museum Collection



Jean Paul Gaultier by Sacai Haute Couture Fall 2021 Show





Designer - Sarah Backland
Spring/Summer 2011 collection
SS11 - photos by Thomas Klementson
<http://www.sweetart.com/2011/05/sarah-backland/>



Love the slope
of the shoulder
from the silhouette
of the body.

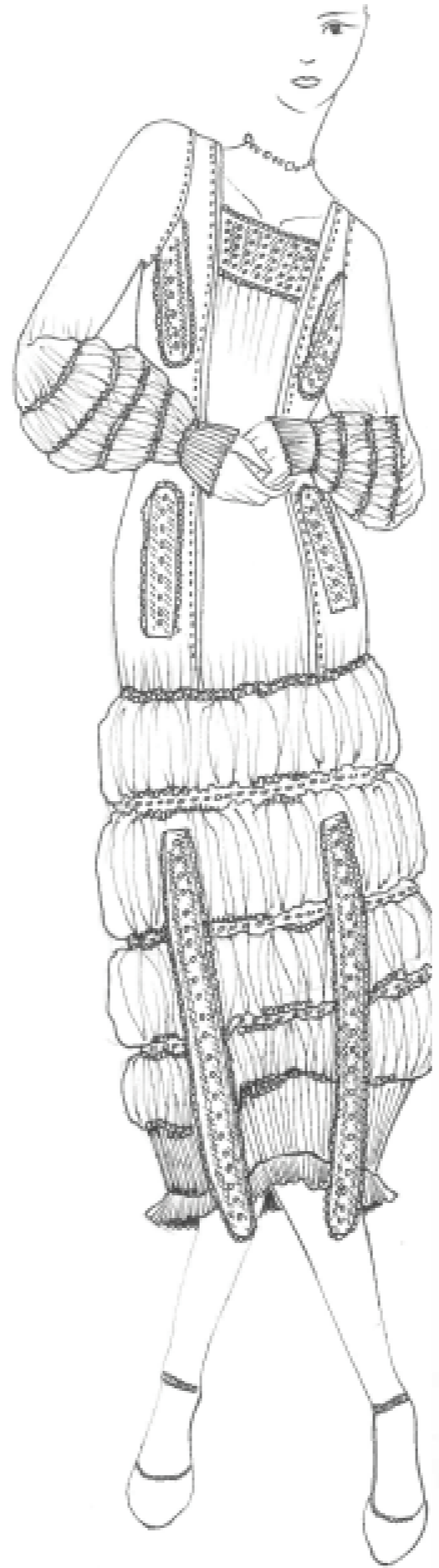
vertical &
horizontal layout of
the textile is
interesting

This sample could be
developed into alternative
ribs or hems but
banded at the ends
to capture the raw fray.

Denim woven into ladders
- Cotton knit
Sneakers (ladders left out).



interested in the combination of
textures, metallic woven into the knit.
also the "lace" effect achieved in the
center front connecting the panels
together



Sampling has best to create "cut-out" effect using partial knit.



creating a symmetrical textile
using partial knitting (soca
effect) to capture the similar
quality of the dimension created
in Backland's
design across.

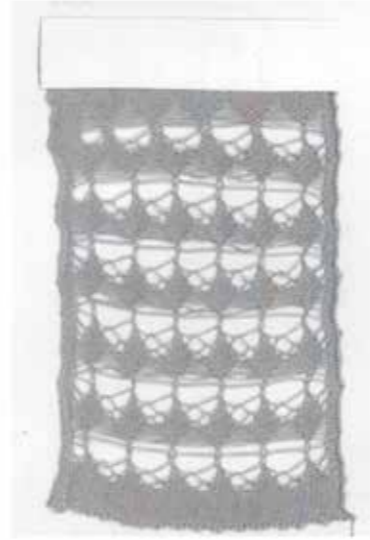
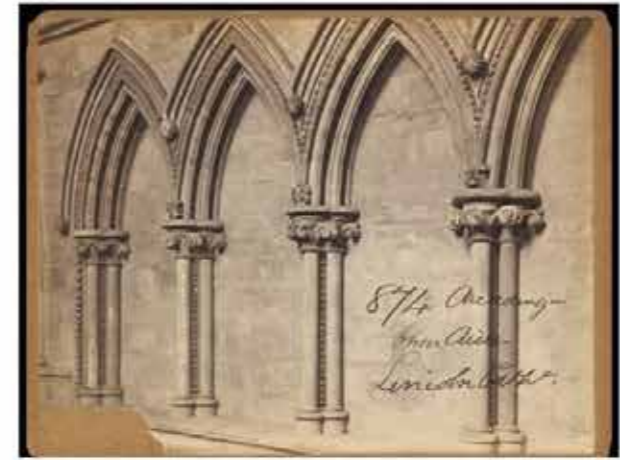
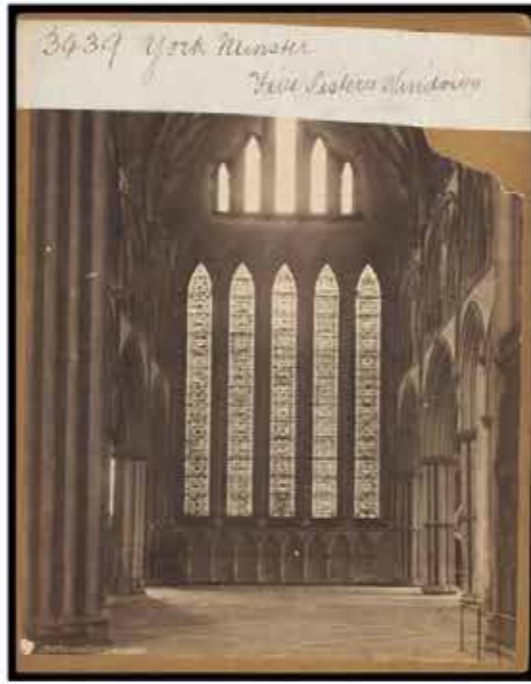
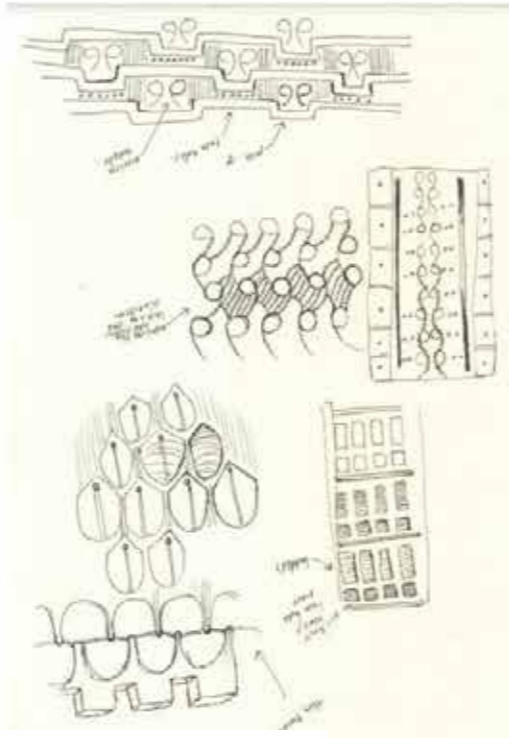
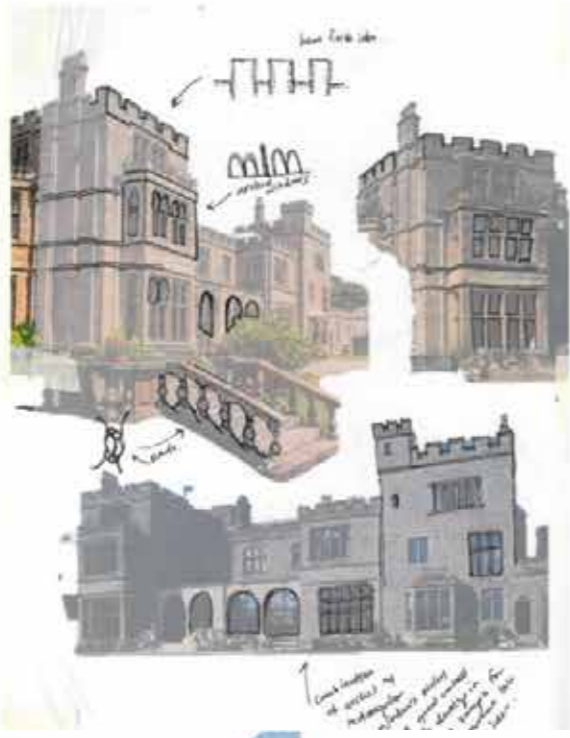
most drawn to the symmetry & play on
the softness of the knit vs the sculptural
rigid silhouette created.



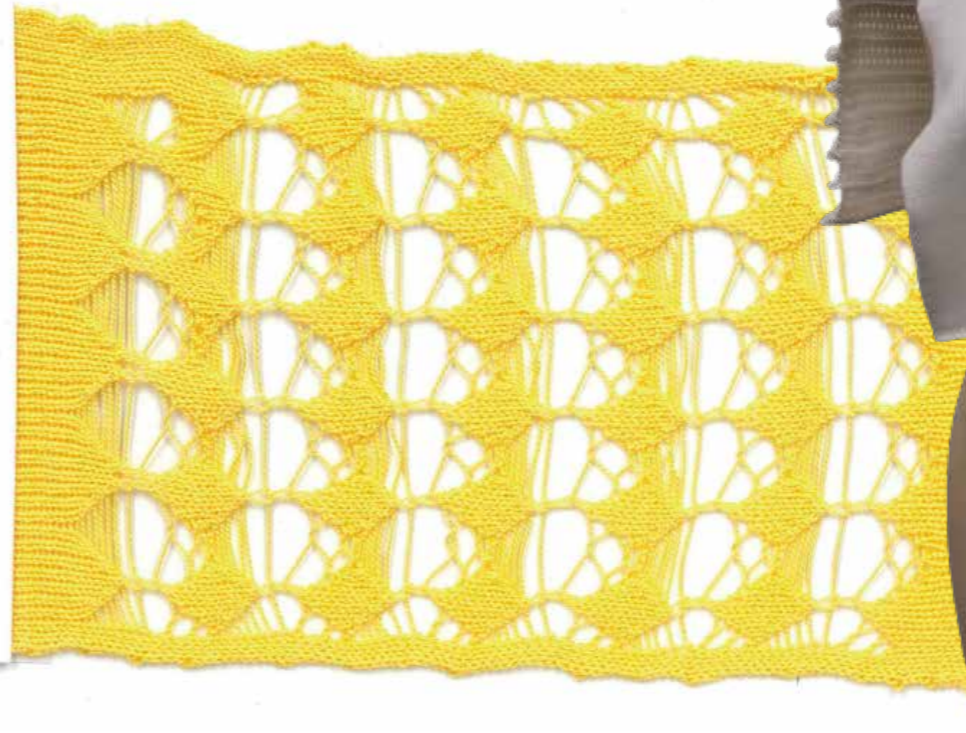
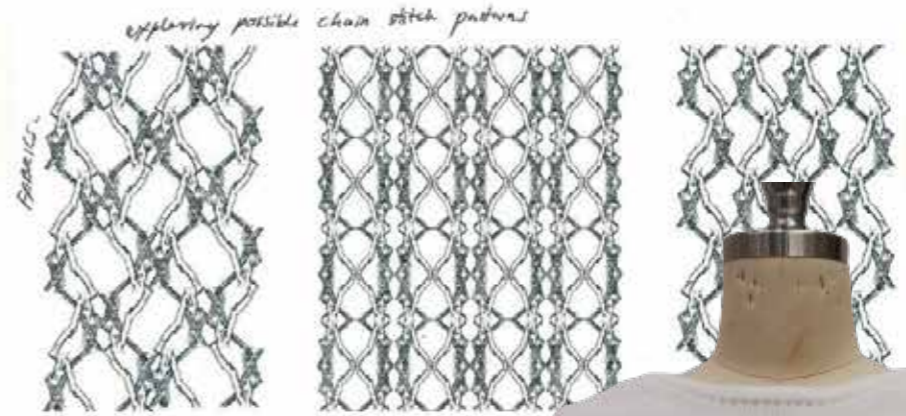
perhaps the
line's created
could be made
by alternating
poly yarn in
this technique
with a heavier
5-6ply.



one simple technique
explored across the whole
slopes is affecting because there's
variations in width of it

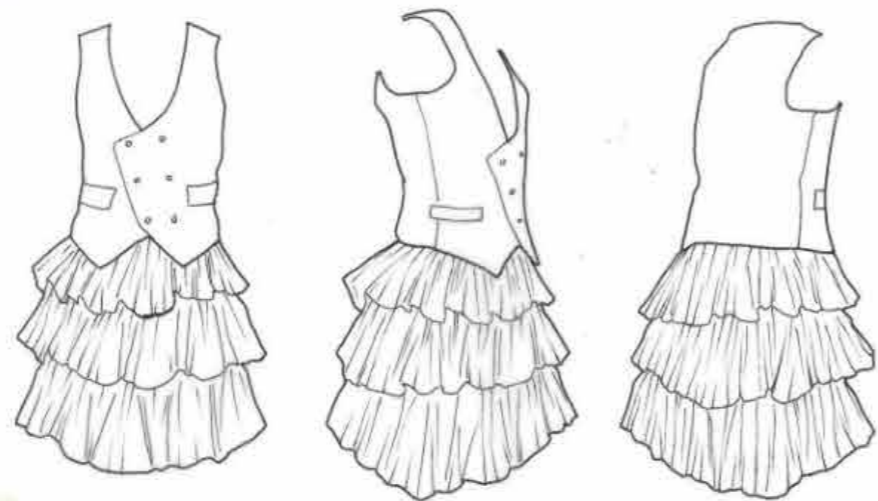


crochet square



Atelier Stand
Collapsible Shoulder

10

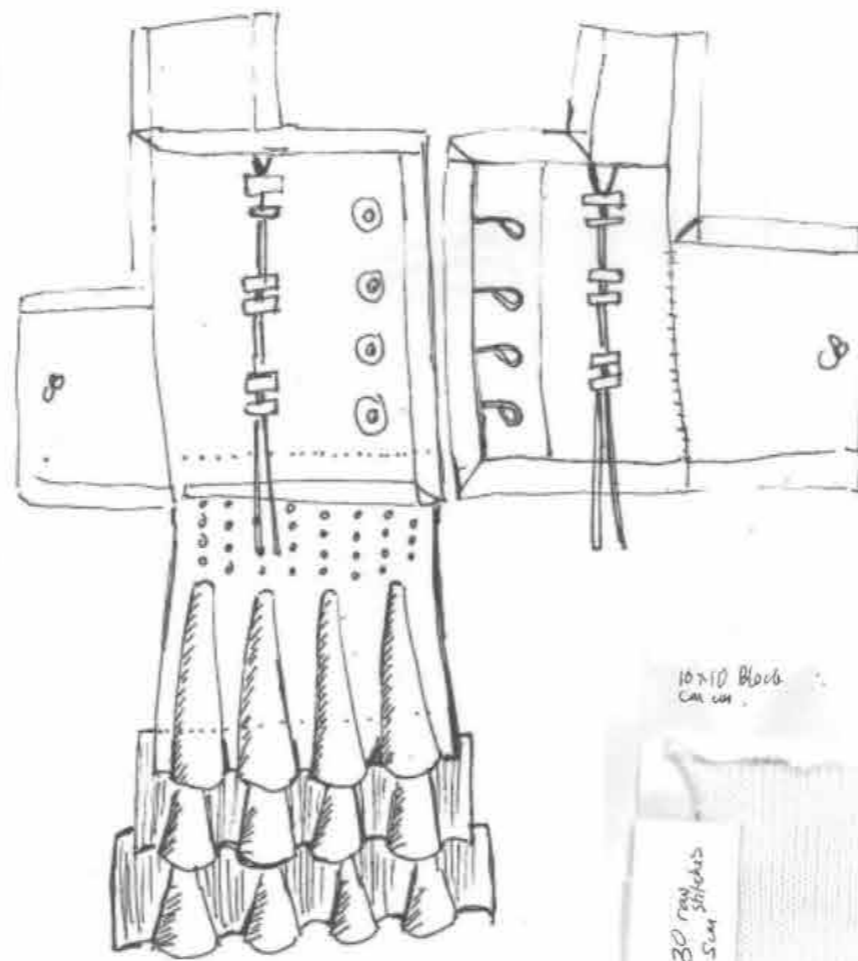
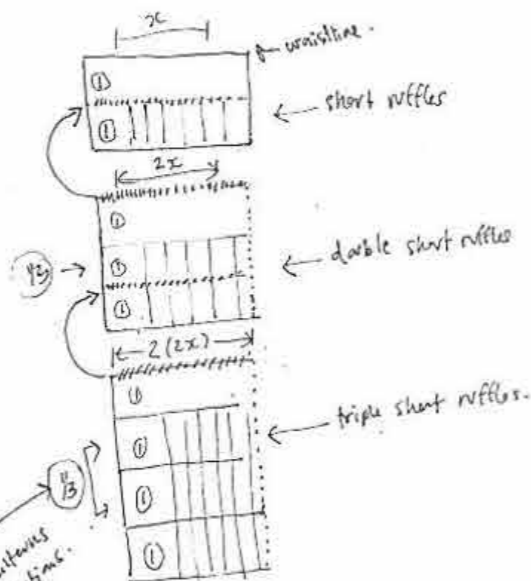


-Light weight

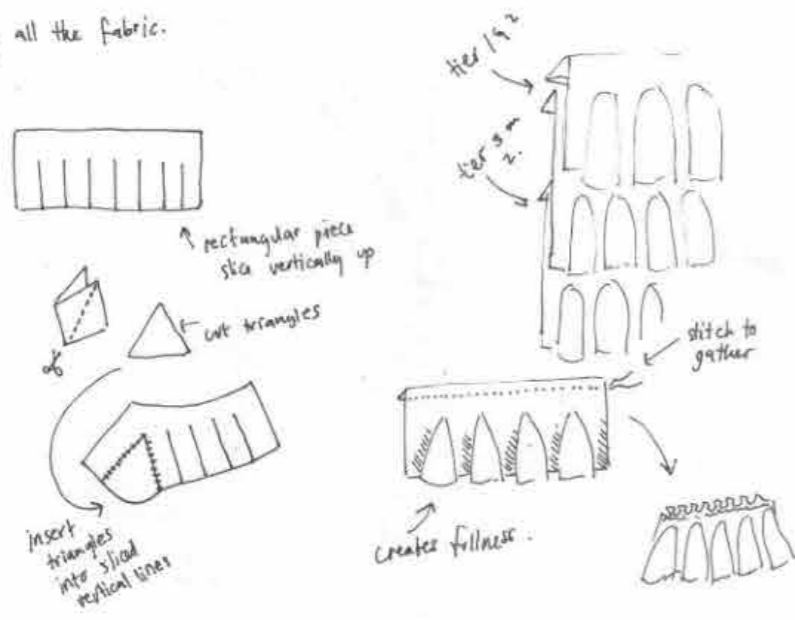
Graphic: Straight Plance. using rectangular & triangular panels.

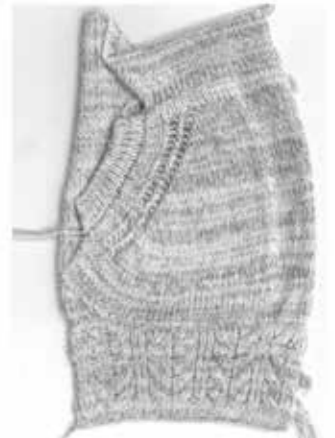
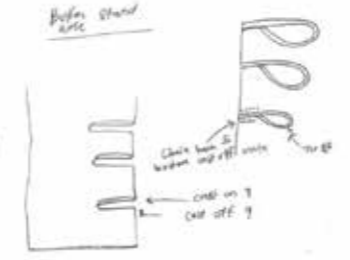
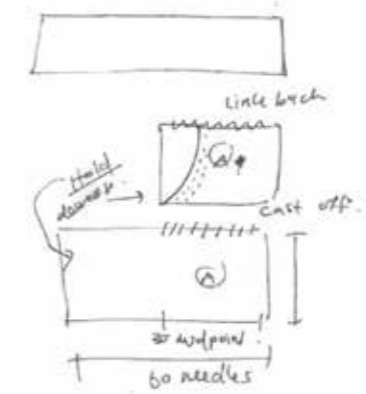
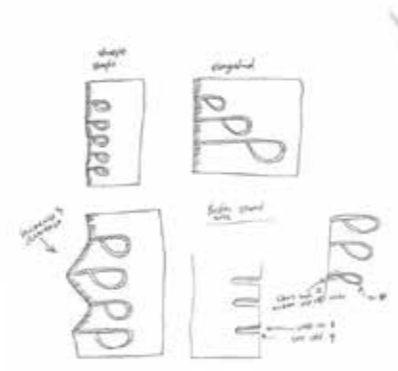
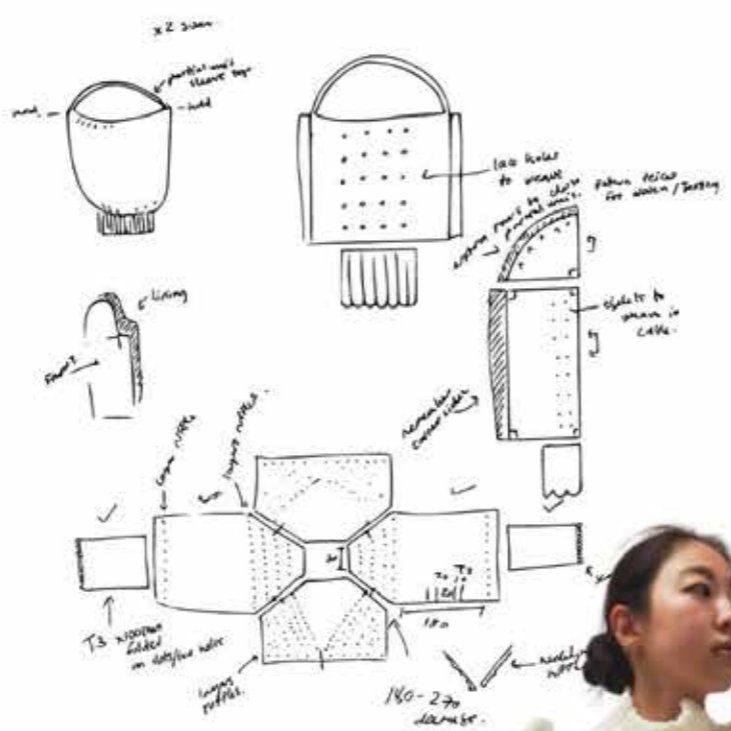
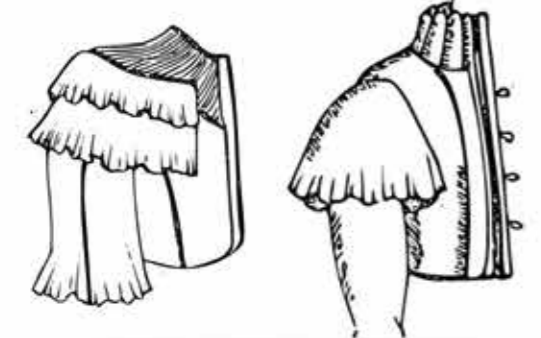


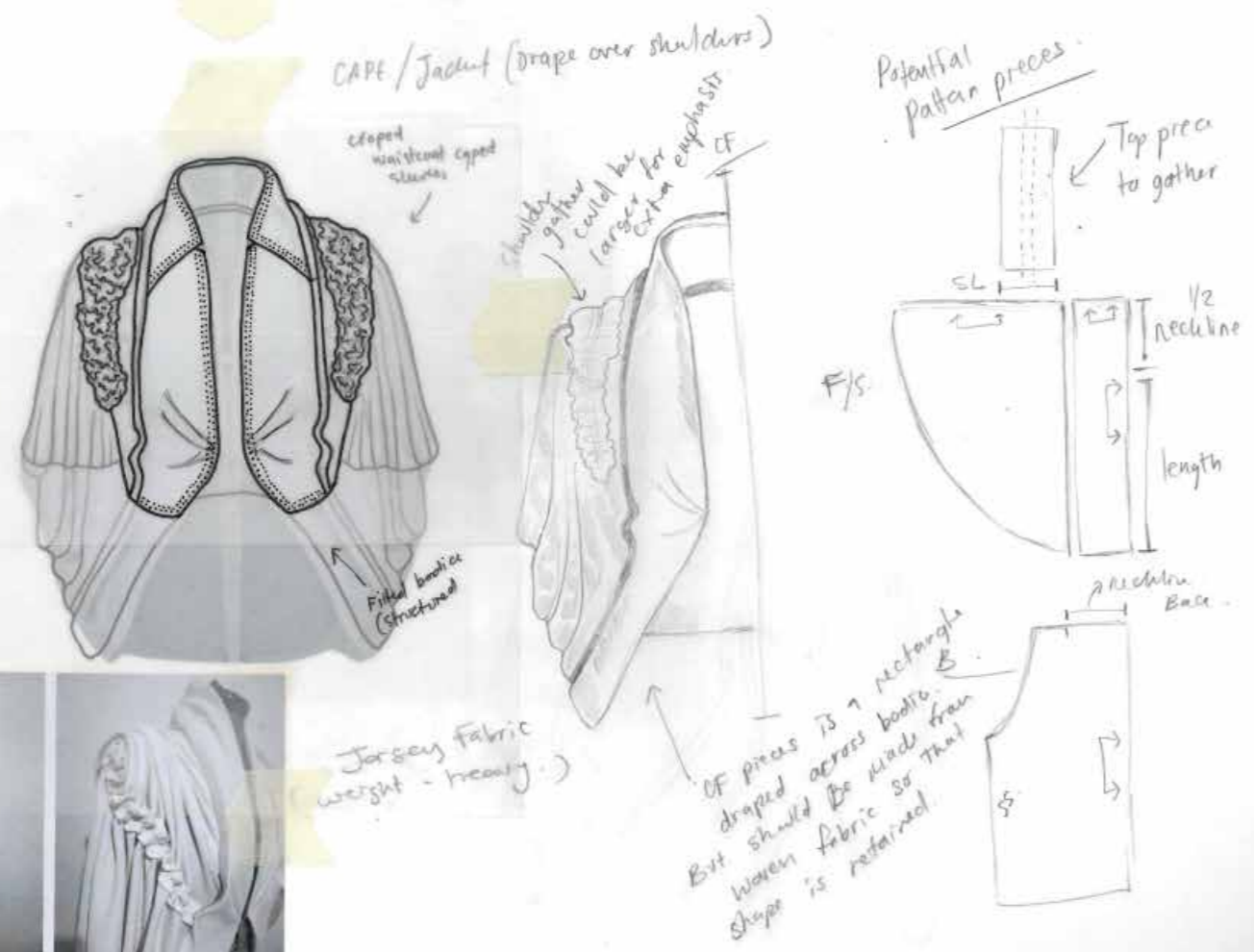
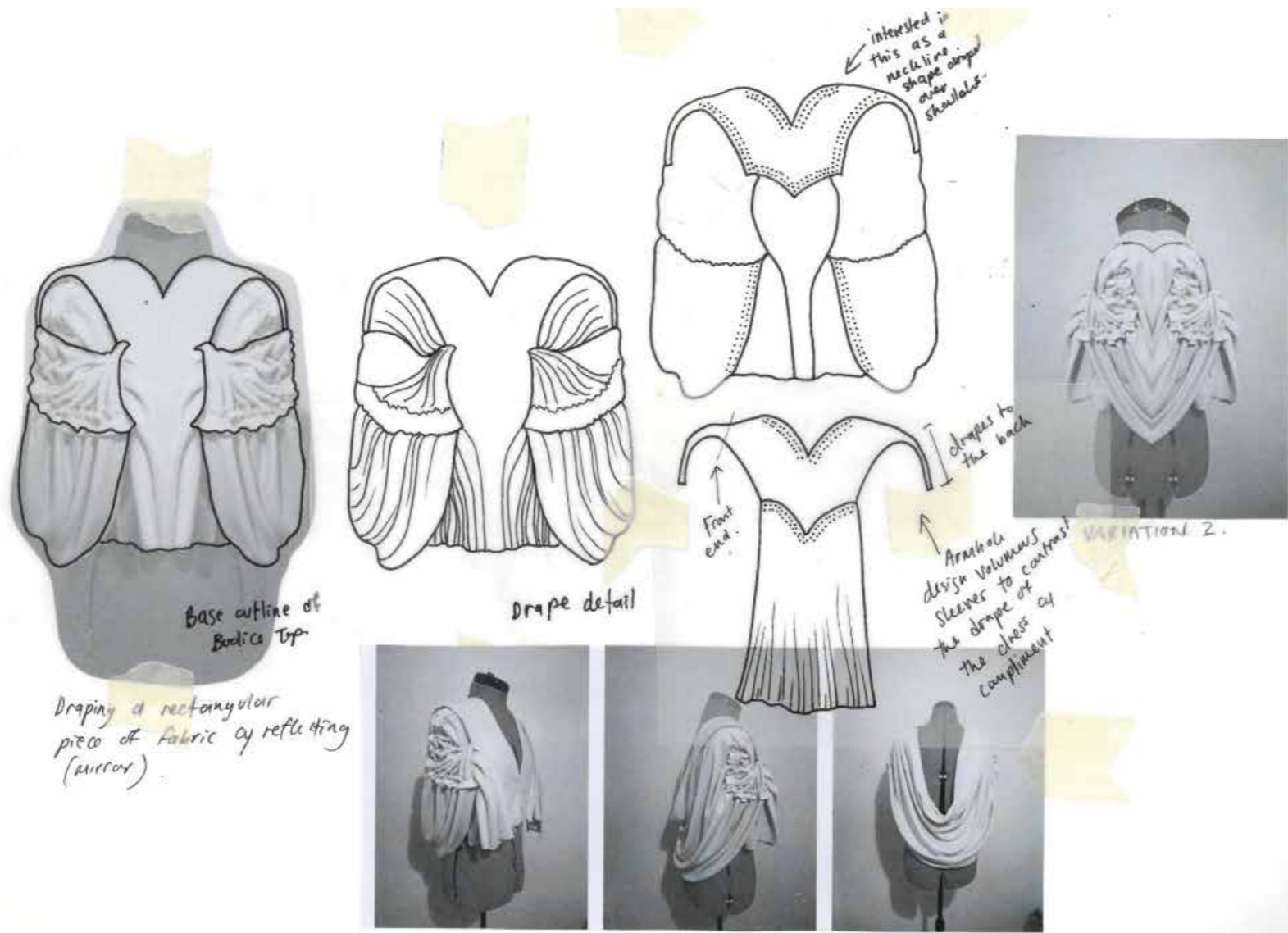
Skirt Bottom

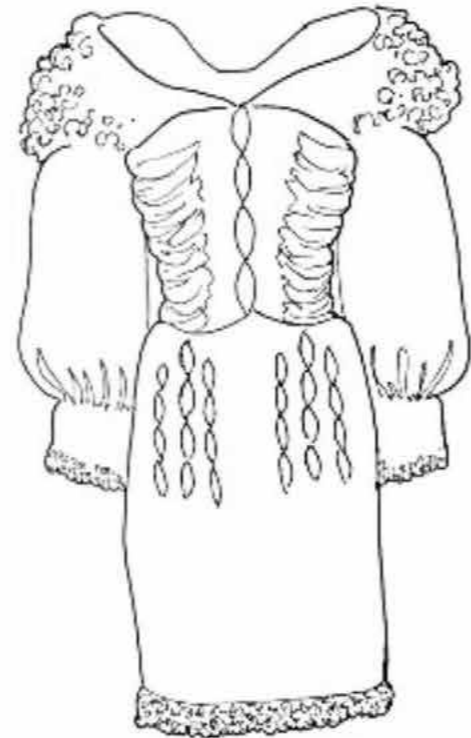
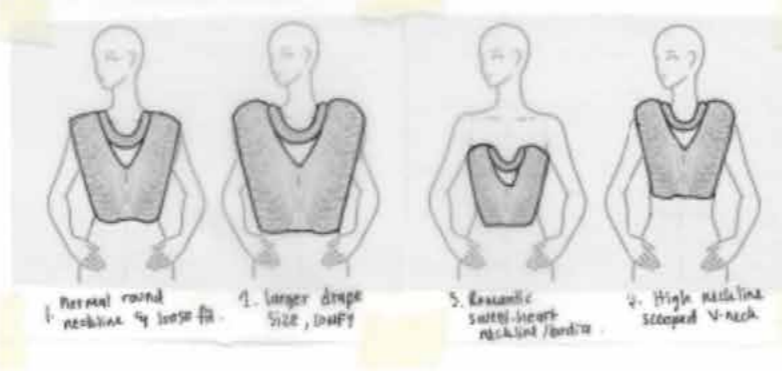


Maximising all the fabric.



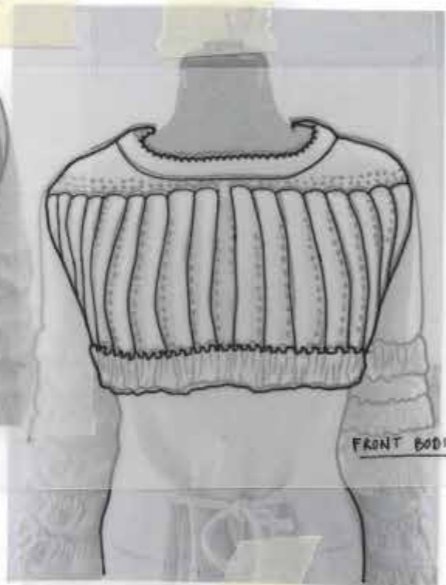






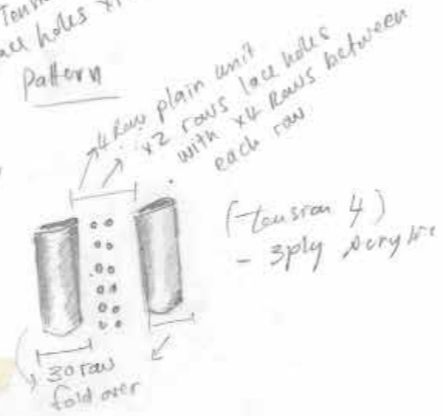


low neckline would not hold at the shoulder



FRONT BODICE

Neckline
 + 12 Rows lace holes + 4 Rows knit
 + partial knit x 20 needles on each end of shoulders
 + 1 Row Tension 10, x 30 Rows at 15-lace holes x 1 Row



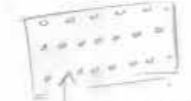
(Tension 4)
 - 3ply acrylic



Decreased x 50 Rows every 12 Rows on each end of the knit piece.
 Linking

Ruffles

(Tension 4)
 - 3ply acrylic



Ruffles added into lace holes
 - 74 needles away from lace holes + 16 needles extra



adds silhouette to this dress

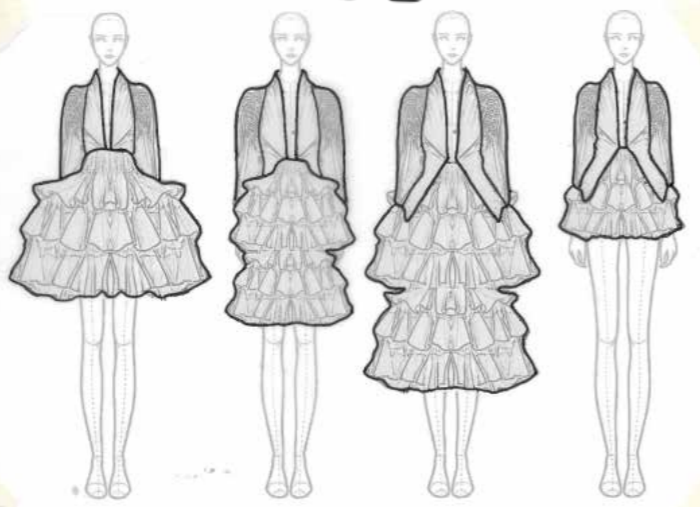
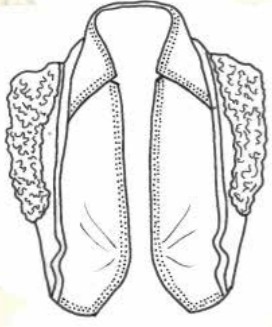
layered layer stays over shoulder both ruffled

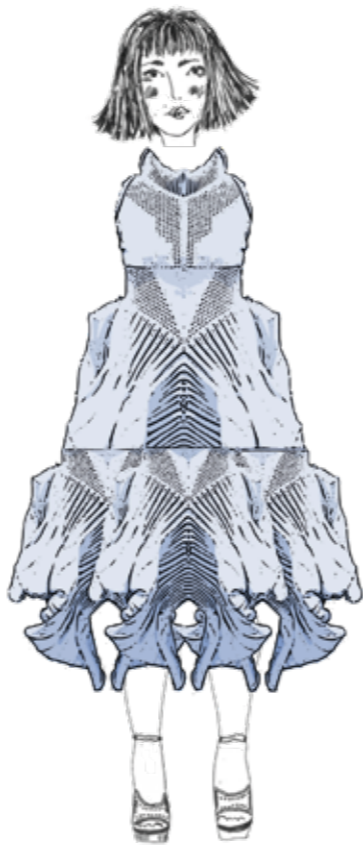
single ruffle over dress length as the lace holes to make not over long with ruffles

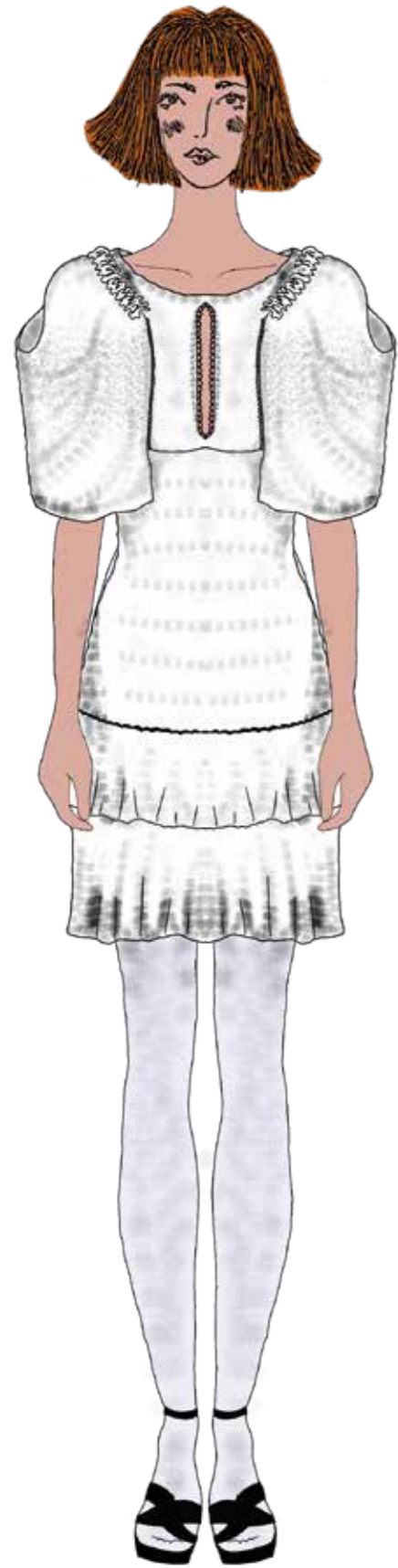


lace back piece
 ball same technique as front bodice









Anne Heffren
BA FASHION
anneffren@gmail.com
Manchester Metropolitan university