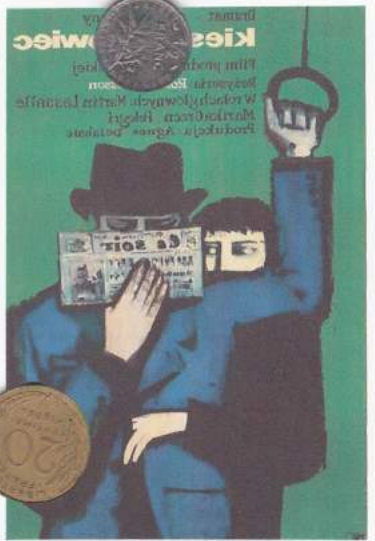


CROW MAIN
GRADUATE MAIN COLLECTION



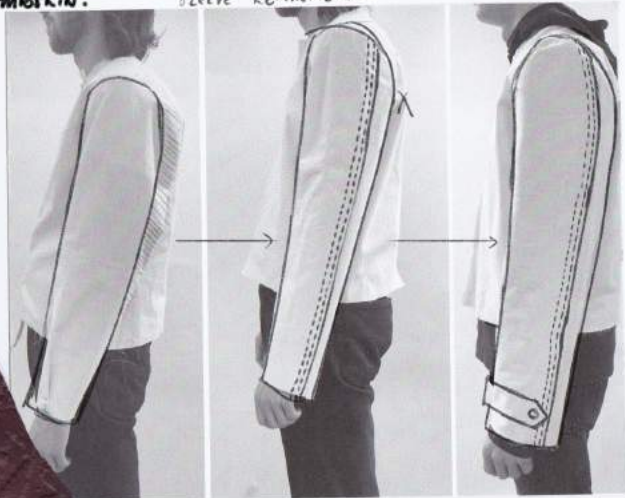
DRIN PHOTON





EMBOSSED LAMBSKIN.

SLEEVE REFINEMENT.



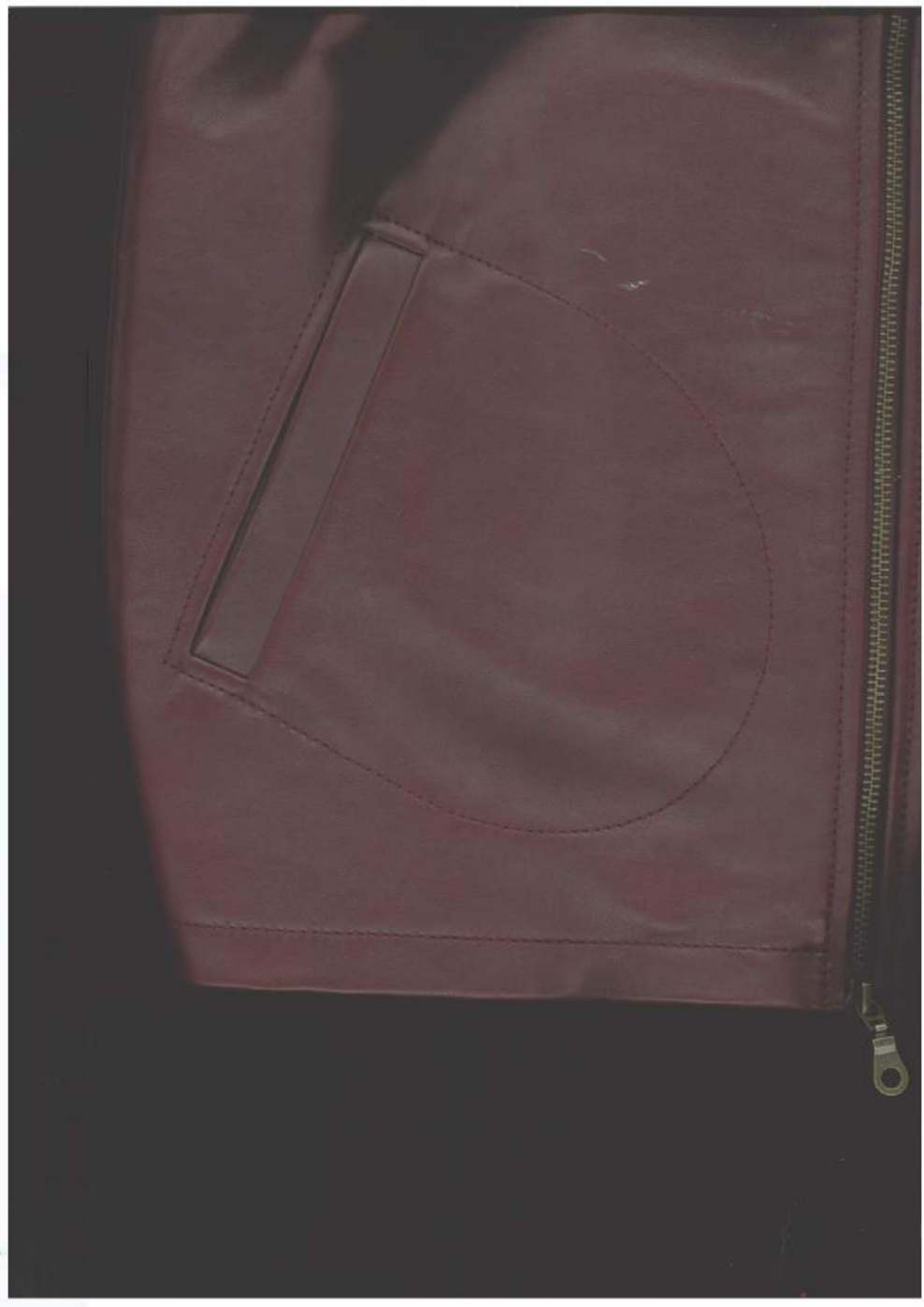
BROKEN UP + DEGRADED APPEARANCE.



PURPLE PINSTRIPE -
+ UNDER SIDE
V.M.I.D. +



LAMBSKIN LEMIER BLOWN

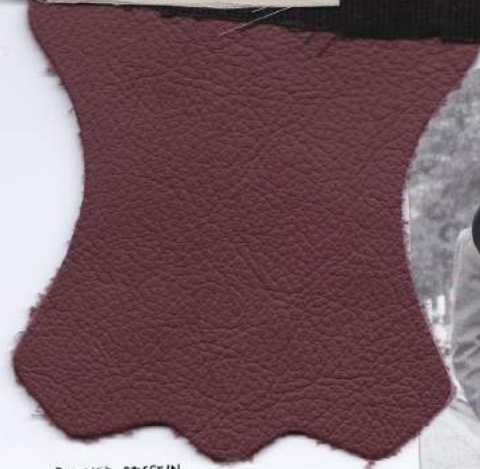


BROWN NEEDLECORD.



EVERY WEAVE WE USE 100% SILK.

RETTINI DOUBLE BREASTED SUITWEAR.



EMBOSSED CALFSKIN LEATHER.

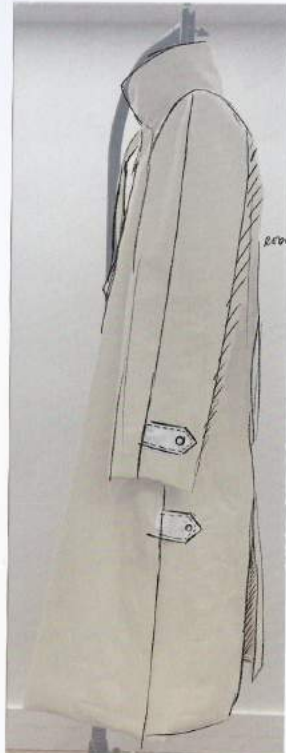
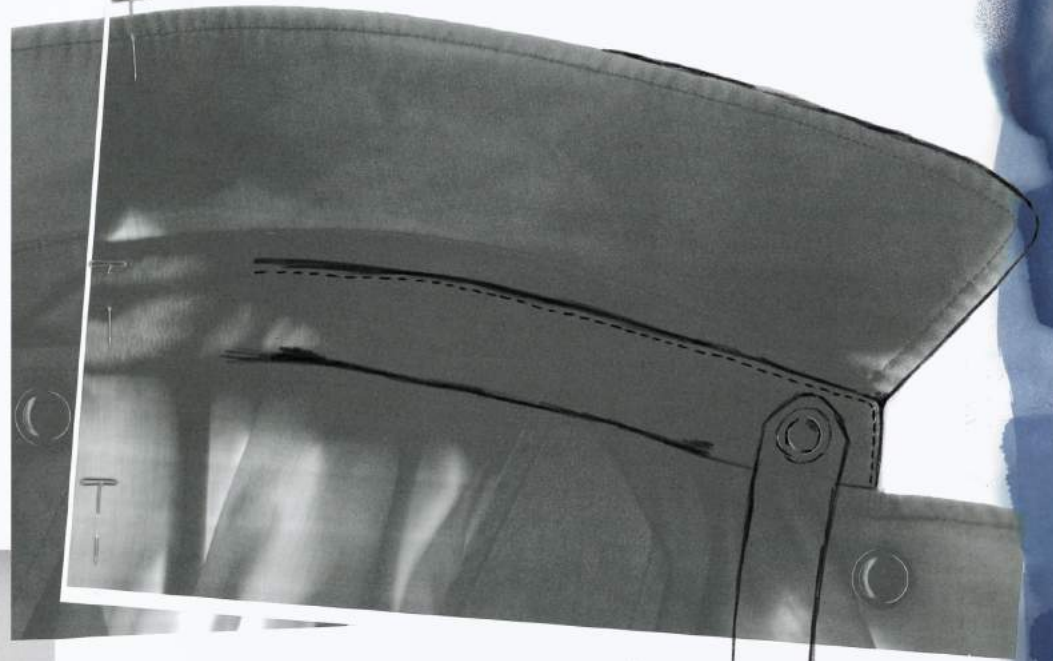




BURBERRY DONATED
CREAM TWILL
100% LITTON.
- PRINT BASE -

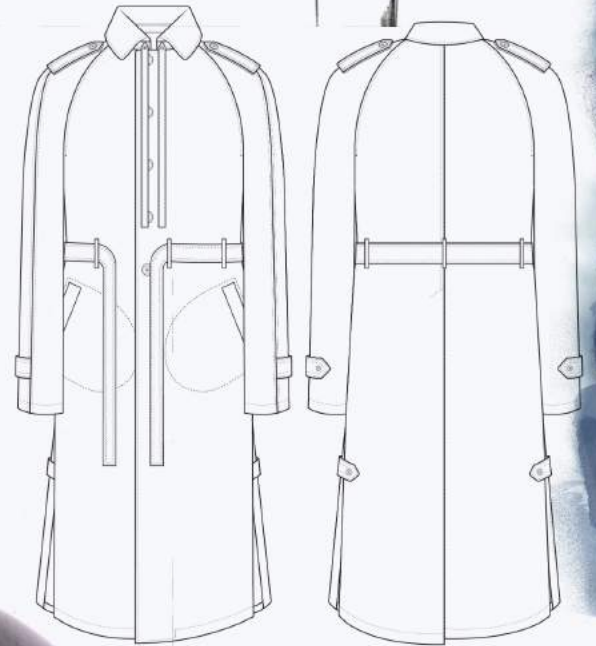


CUT + SEW CHUNKY KNIT
100% WOOL.



REDUCE VOLUME
IN SLOPE

REDUCE VOLUME
IN SLOPE



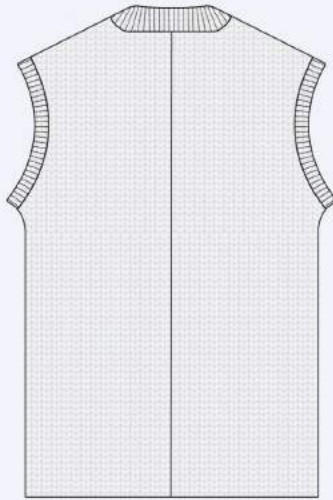
40. JC PENNY VARSITY (ARLIVAN REF.)



TOLLING USING VINTAGE REF SHIRTS



CUT + SEW WOOL CHUNKY KNIT



PRINTED KNIT PLACEMENT USING
KROCH STENCIL





MINIING FRENCH GORE FABES VIA DIGITAL PRINT.



100% COTTON SHIRT WITH STRAP - BLUE GR. WASH.

