



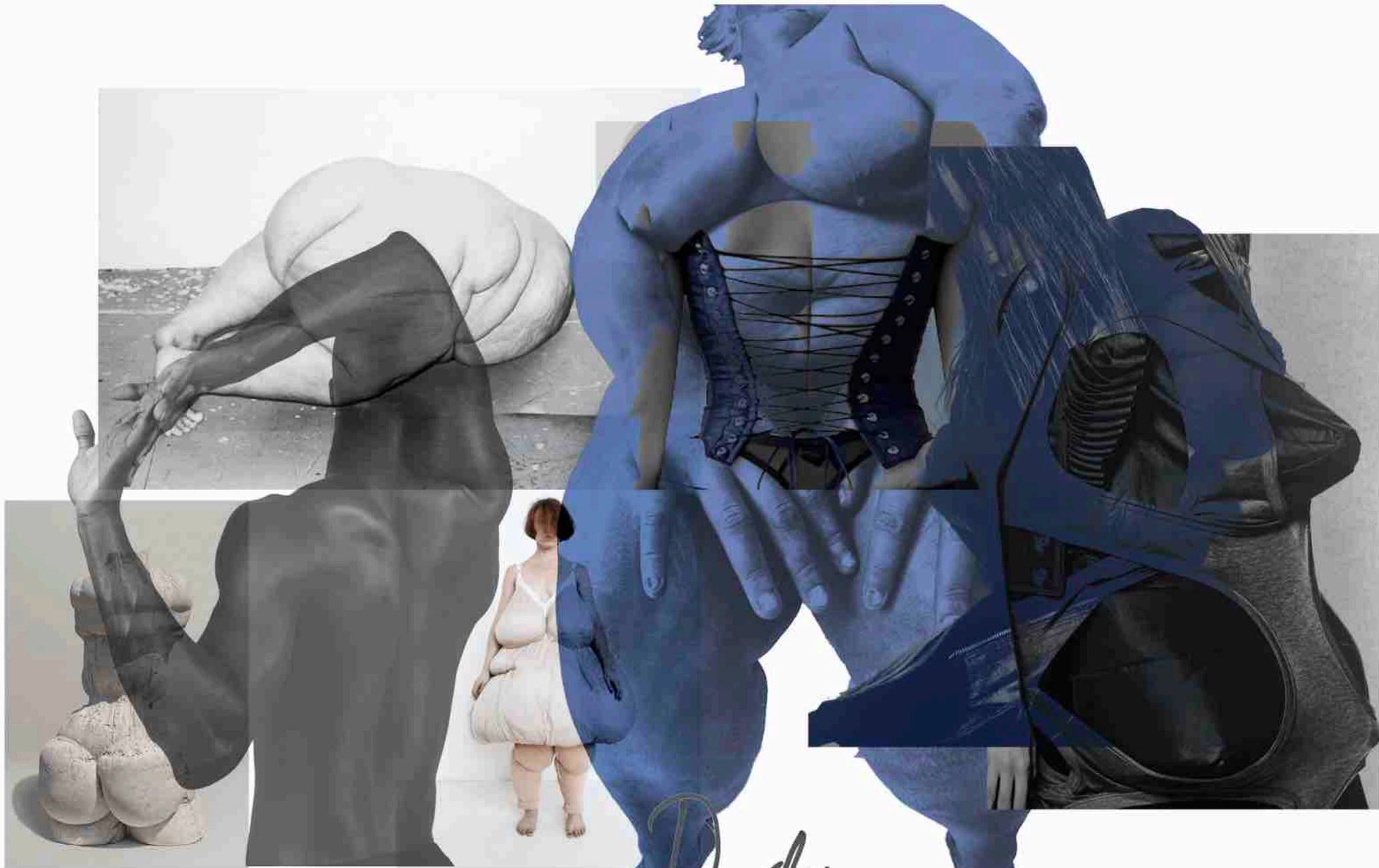
REBECCA *Durdan*

'DISMORPHIC'

AUTUMN/ WINTER

2023/ 24

rebeccadurden@icloud.com
07832494226



REBECCA

Purden

'DISMORPHIC'



REBECCA *Dunder*

'DISMORPHIC'

Transformer seat
PVC envelope filled with expanded polystyrene beads, which form a rigid shape when the air is sucked out
Designed by Jon Arad
Manufactured by One Off
England, 1980

Hole in the Wall mirror
Acrylic and plaster
Commissioned by Leon Charles and Tom Lomham

LOOK 1
WOMEN'S WR.



WATERPROOF TISSUE TO PROTECT WARPING

WATERPROOF EDGE

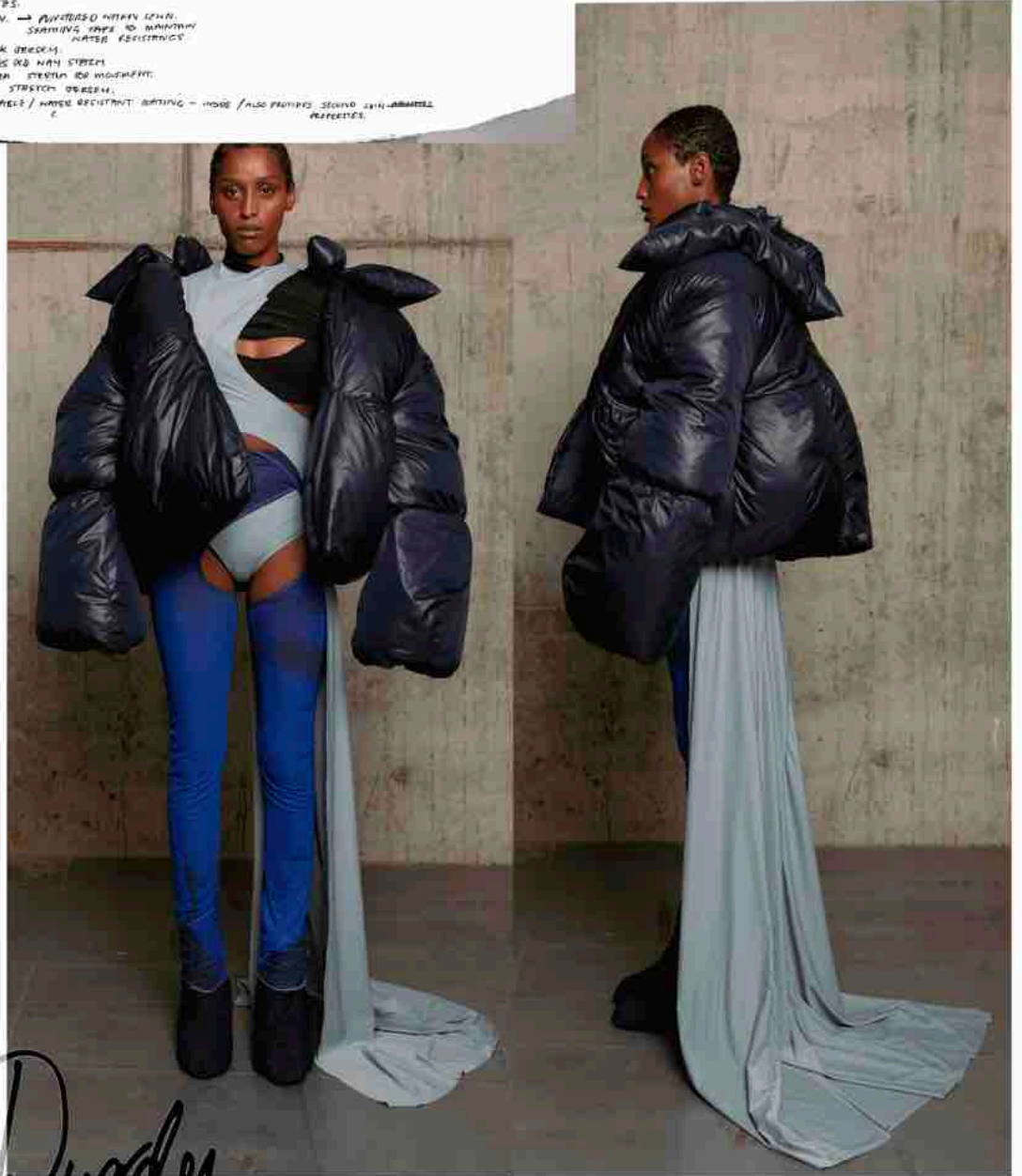
FABRICATION: NOTES

- WATERPROOF NYLON → PUNCTURED WITH LEAK SEAMING TAPE TO MAINTAIN WATER RESISTANCE
- FULLER MEAN 3 DIA. UNDERST. PROPERTIES OR MAY STRETCH
- ULTRA STRETCH 100% MODERNITY
- BLACK WATERPROOF STRETCH OVERLAY
- ESSENTIALLY / WATER RESISTANT / BREATHING - MOOD / ALSO PROTECTS SECOND SKIN / ANIMAL RESISTANCE

USE HIGH / LOW TO AVOID HANGING + THIS PROTECTS FROM WIND

EAR-HEARD PROTECTANTS HOLD UP TO POINTS

LOOK 1.
JACKET DEVELOPMENT



REBECCA

Rebecca

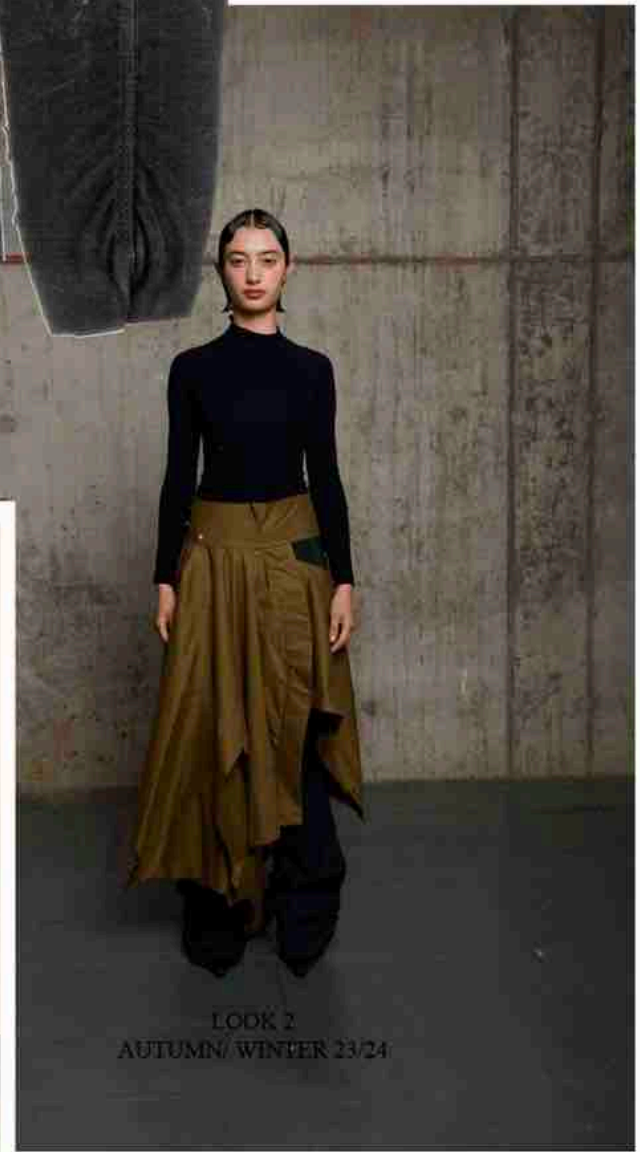
'DISMORPHIC'



LOOK 2
WOMEN'S WEAR.



- LOOK 2
JACKET
(N)
- Add BOHM
FEEL
- LOOK 5
THICK?

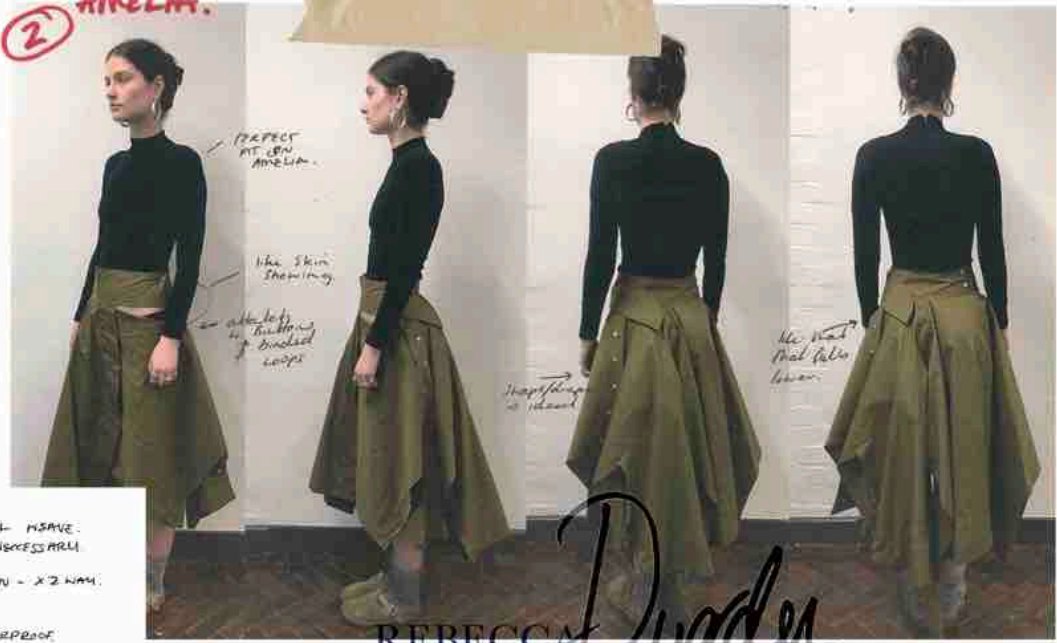


LOOK 2
AUTUMN/WINTER 23/24



JACKET
FOR

② AMELIA.



PERFECT
FIT FOR
AMELIA.

like Skin
Feeling.

add lots
of buttons
& brooch
loops

long thin
at waist

the waist
that falls
down

- 2. FABRICATION NOTES
- BRADSTOCK WATER REPELLENT TECHNICAL NYLON SKIRT JACKET - SEAMING TAPE MAY BE NECESSARY TO CHASE THE DETAIL
- ITALIAN BLUE SUEDE TRUSSEY - SECOND SKIN - X2 WAY - LIMITED STRETCH - OVERSTITCH DETAIL
- WATERPROOF NYLON - BACKED TO BE WATERPROOF - BREATHABLE

REBECCA *Durden*

'DISMORPHIC'

LOOK 3
MENSWEAR



3. NET POWER MESH. - 4X WAY STRETCH.
 SPIDER ~~POWER~~ LYCRA, & 4 WAY STRETCH.
 → ADAPTION TO DURING/OCCASION WEAR
 CONCLUDES LESS REFINED SPECIFICATIONS
 NYLON DIVER COAT → REQUIRES SEALING TAPE
 NYLON EASILY FACTORED WHEN SEWING.
 → REMOVES WATER PROOFING ABILITY.



REBECCA *Durden*
 'DISMORPHIC'

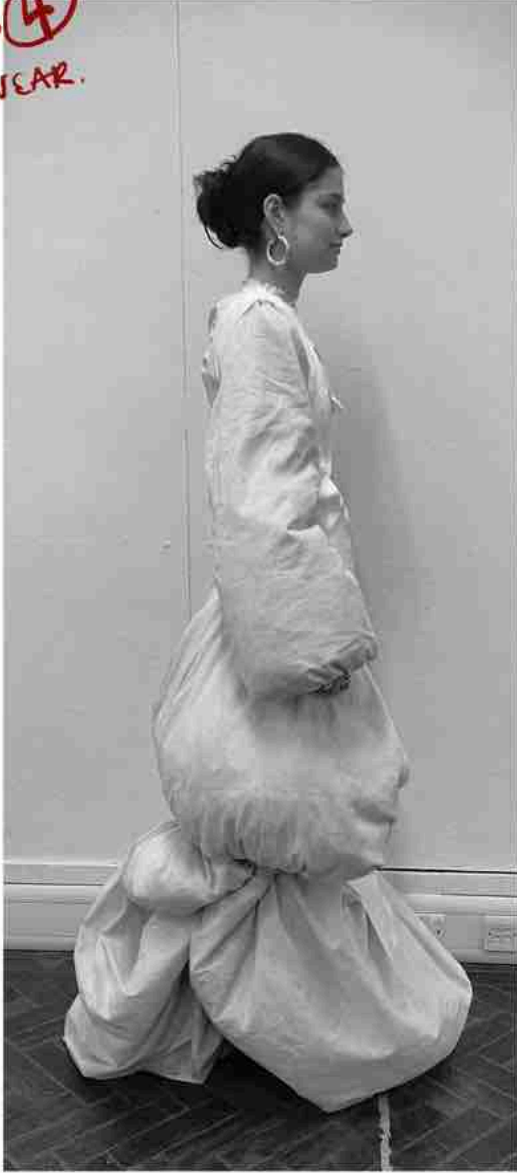


- love neckline
- knit placement
- perfect!

LOOK 3. LOUIS.
- MOST DRESS-

REBECCA *Dunbar*
'DISMORPHIC'

LOOK ④
WOMSWEAR.



REBECCA

Durden

'DISMORPHIC'

LOOK 5
MENSWEAR

Look 5. LOUIS.
unfinished jacket.



add
magnetic
snaps

perfect
length

TOP STITCH
DOWN
V. 11/21
TOP

5. FABRICATION - WATERPROOF STRETCH WEAVE.
WINDS - OILWATER REPELLENT - WATER PROOF.
MESH TO CENTER TREATMENT
- THERMO - COOL - MESH - ADJUSTED WITH WATERPROOFING
AGENTS.

LOOK 5
LOUIS



strong elastic trim
- use the same fabric
- use the same fabric

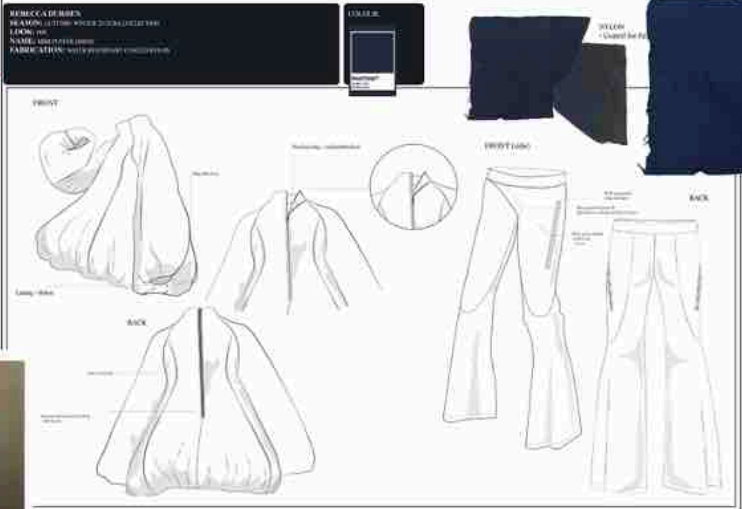
elasticity on trousers is huge.

elastic trim
- use the same fabric

REBECCA DUNN
'DISMORPHIC'



LOOK 6
WOMENSWEAR



6: FABRICATION - COATED NYLON WATER PROOF
 STRETCH SCUBA/ OR TACED SCUBA
 ↳ TRIPLE NEEDLE DETAIL
 ↳ WET SUIT REFINISHING.



REBECCA Dunder

'DISMORPHIC'



REBECCA

Durden

'DISMORPHIC'