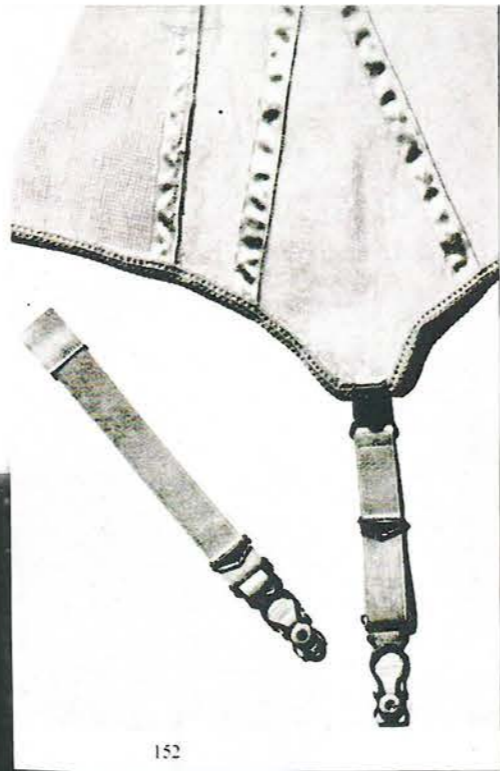


THE DEGRADATION

KITTY ELLIS A/W2024

A DAINTY SUSPENDER BELT
FROM NET OR SILK



THE DEGRADATION

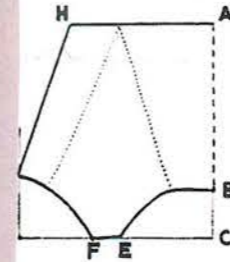
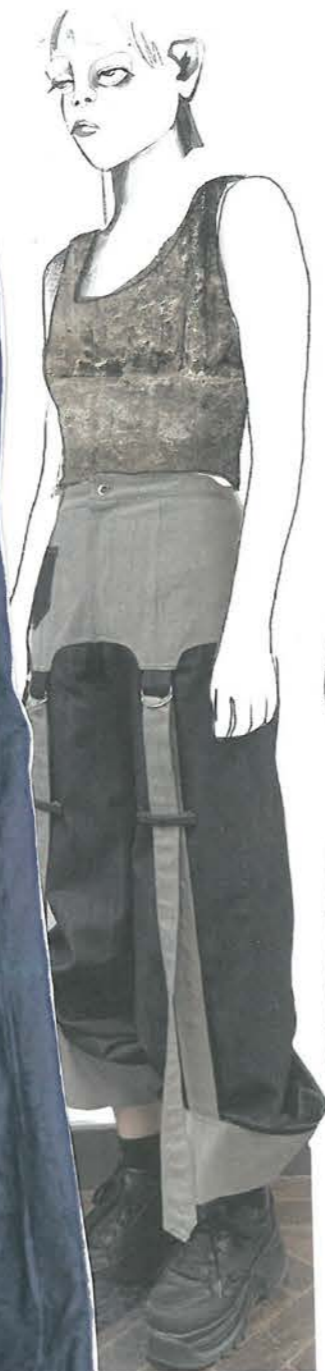
KITTY ELLIS A/W2024



heavy hardware juxtaposed with hyperfeminine silhouettes.

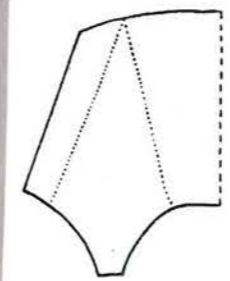
THE DEGRADATION

KITTY ELLIS A/W 2024



- A-B 7 ins.
- C 3 ins.
- D quarter of hip measure - 2 ins.
- E 4 ins.
- F 1 in.
- G 2 1/2 ins.
- H C-D 2 ins.

The broken line represents the centre front, and the dots outline the area which should be made of double material



2

2. This shows the extra 1 in in length at the centre back and the lengthening of the double section for suspender

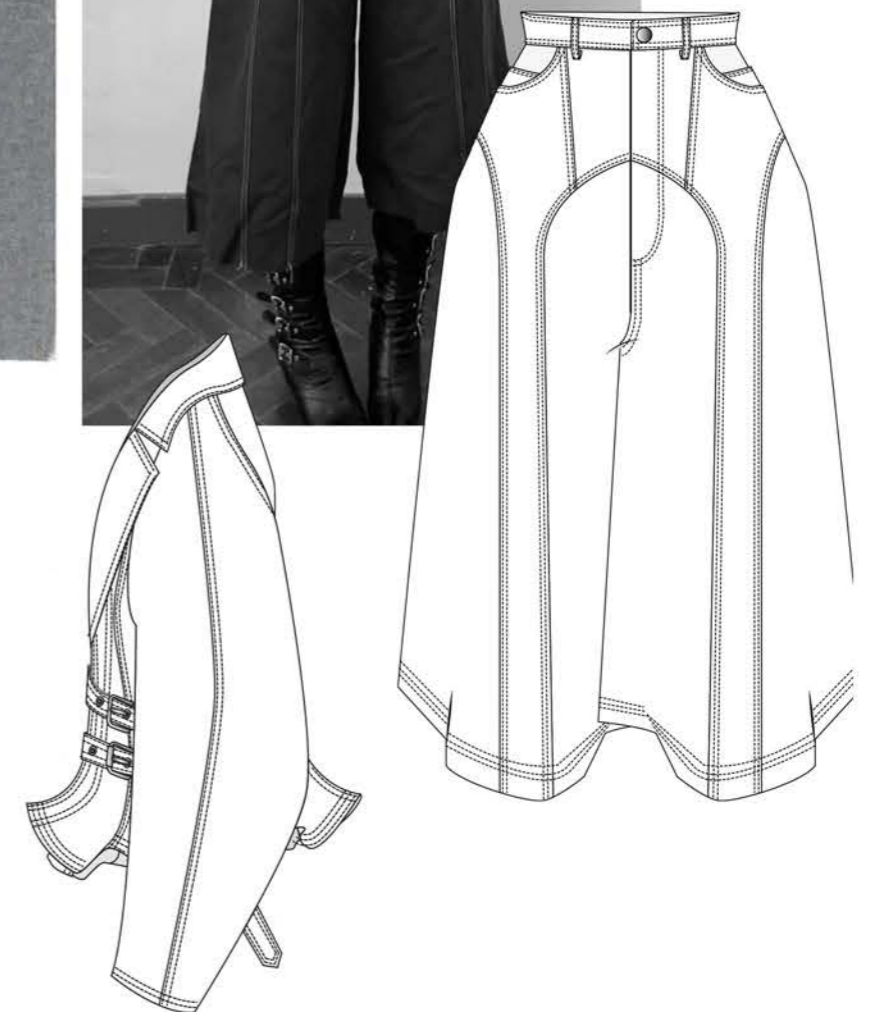
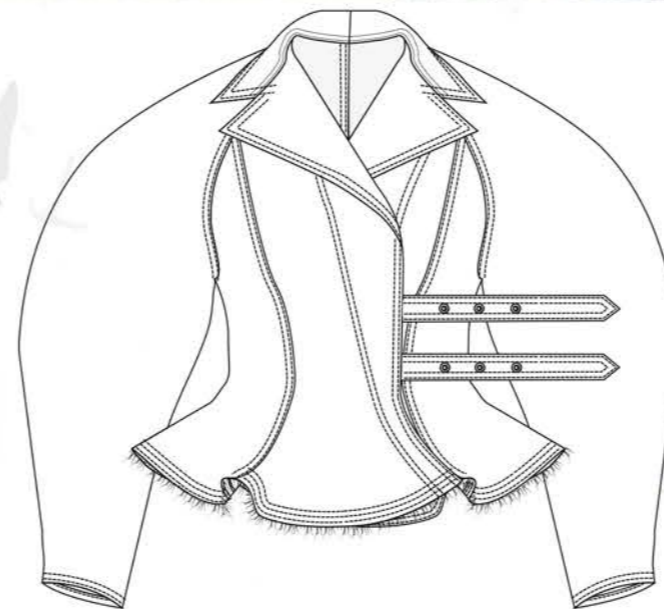
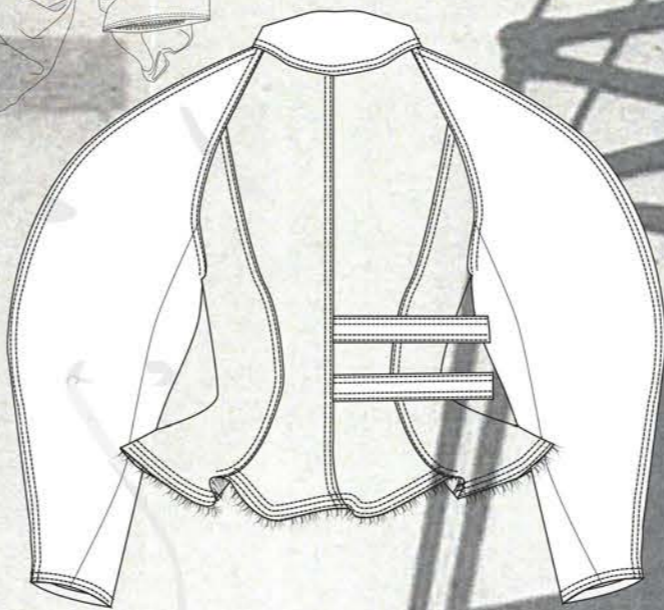
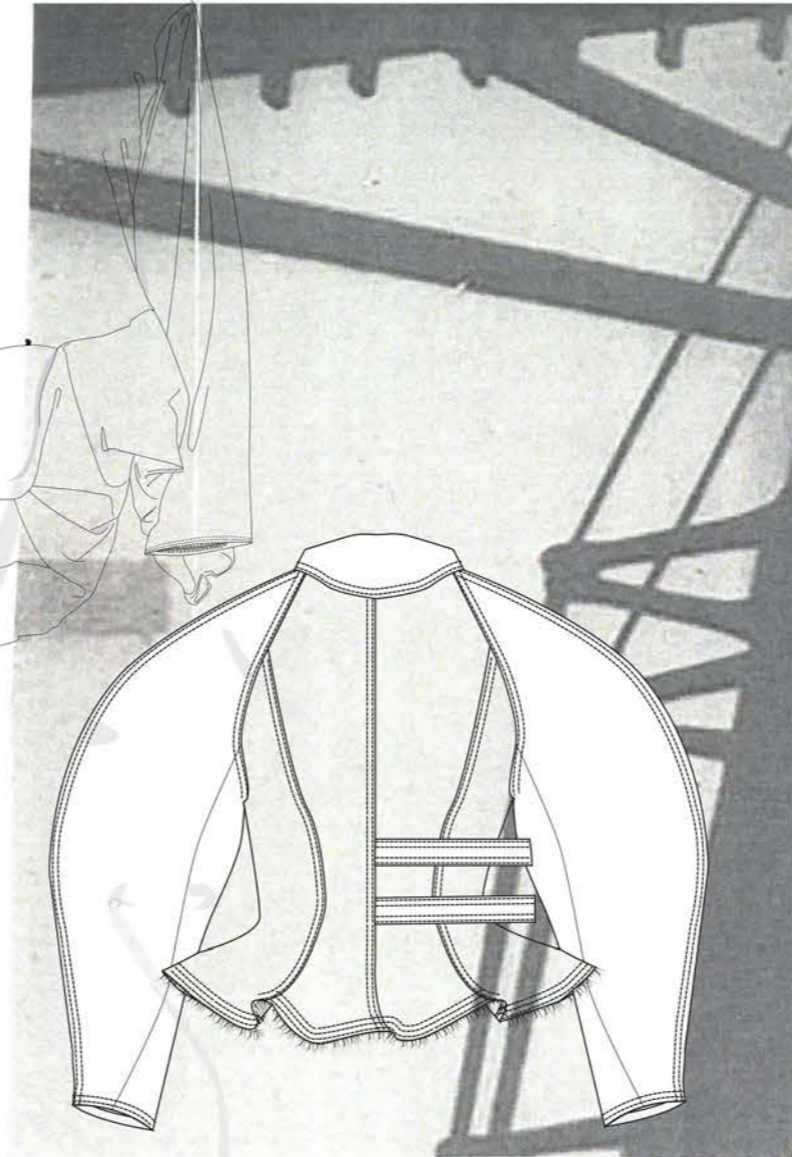
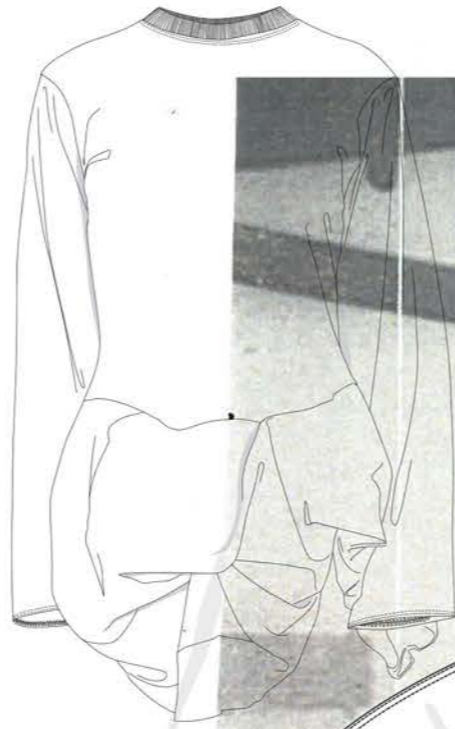
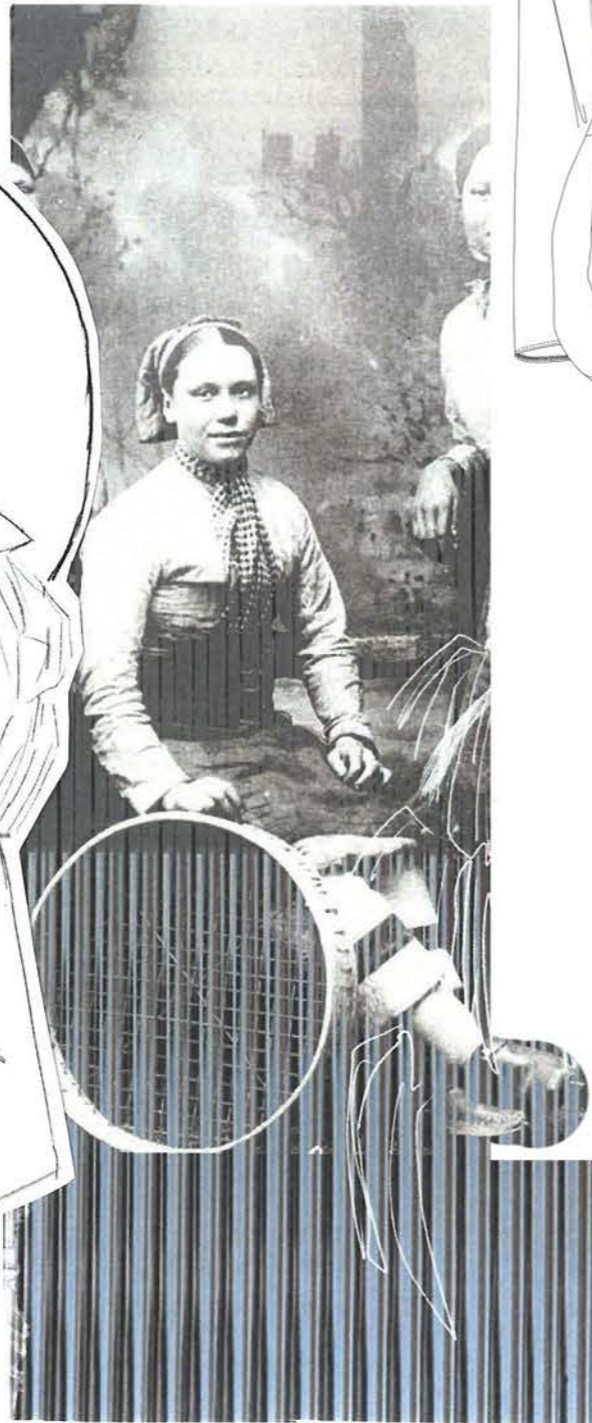


3

3. The wedge-shaped piece of elastic which is let into the side. A-B is the length of G-H. The top is 1 in. wide and the bottom is 3 ins.



THE DEGRADATION



THE DEGRADATION

KITTY ELLIS A/W2024

THE ILLUSION OF SMOKE WITHIN FABRIC

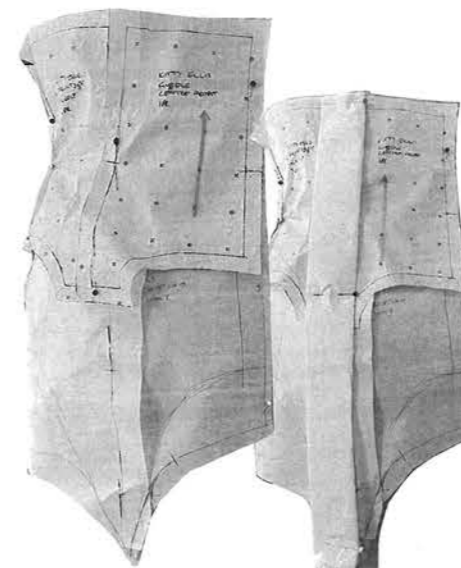
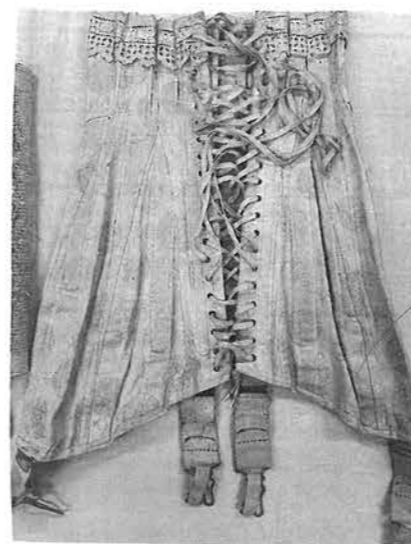


*Head
and Tulle
into
skirt &
trousers*

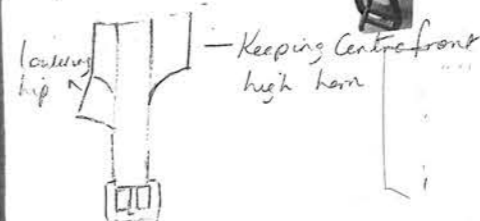
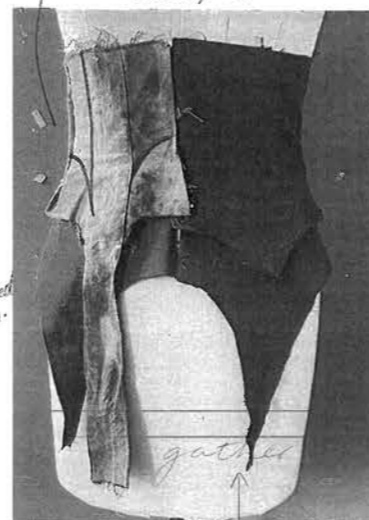
THE DEGRADATION

KITTY ELLIS A/W 2024

HYPERFEMININE CORSETRY



Modernising the shape by raising the hem.



lowering hip

— Keeping Centre front high hem

— Increase the height of the Centre front hem on waist pieces

fit waist band → press gathers heavily.

Skirt pattern

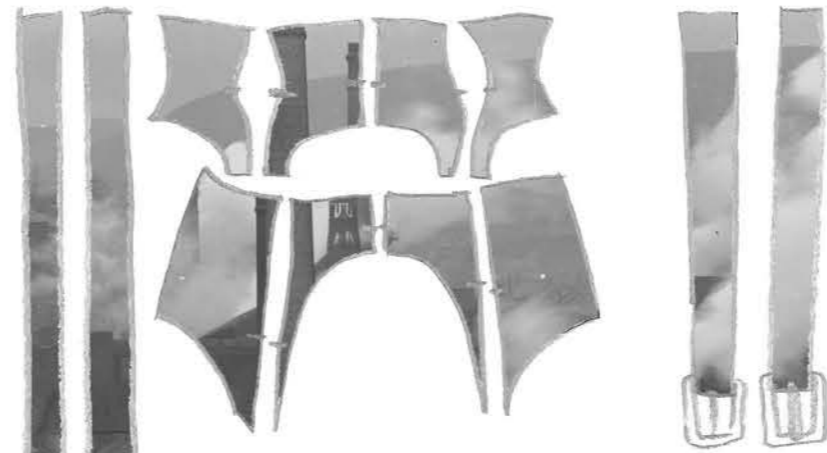
Tack drill hole to drill hole.

find a way to create volume, loud silhouette and folds without tacking fabric, Create a shape more emblematic with clouds of smoke.

SUBTRACTION CUTTING

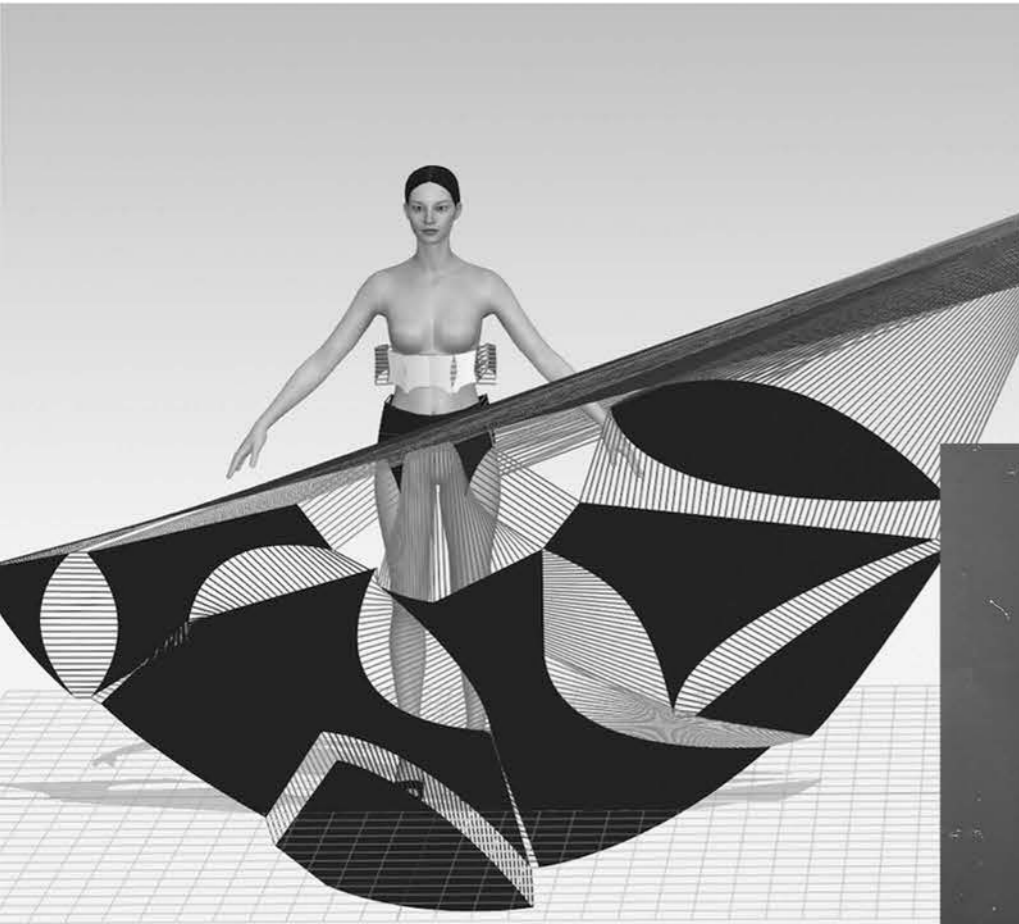
The distance between designer and maker of fashion at the design stage can also be physical, with the actual manufacturing process hidden from view in far-away sweat shops and not talked about or celebrated. Julian Roberts says "before you buy a garment and wear it, it will have been touched by many skillful hands, but often the hand that touches it the LEAST is the hand of the fashion designer."

Throughout the development of this collection I have lived by the philosophy of designing with not only sketch, but pattern also "rather than in vague illustrative drawings which become reinterpreted by other skilled cutters." Julian Roberts. Using the basis of subtraction cutting to initiate my pattern design has allowed to create drama and fullness in a garment that was difficult to realise in just sketch



THE DEGRADATION

LOOK 2 PATTERN DEVELOPMENT

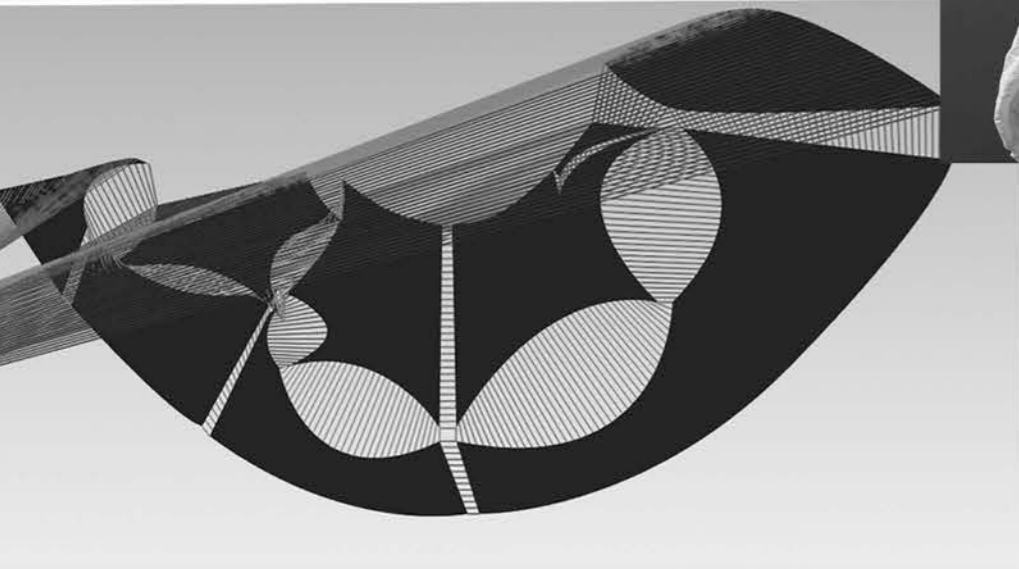


Development of pattern in Clo 3D to help the realisation of a physical pattern. Using a classic circle skirt pattern and subtracting rounded sections to create seam detail, volume and drape.

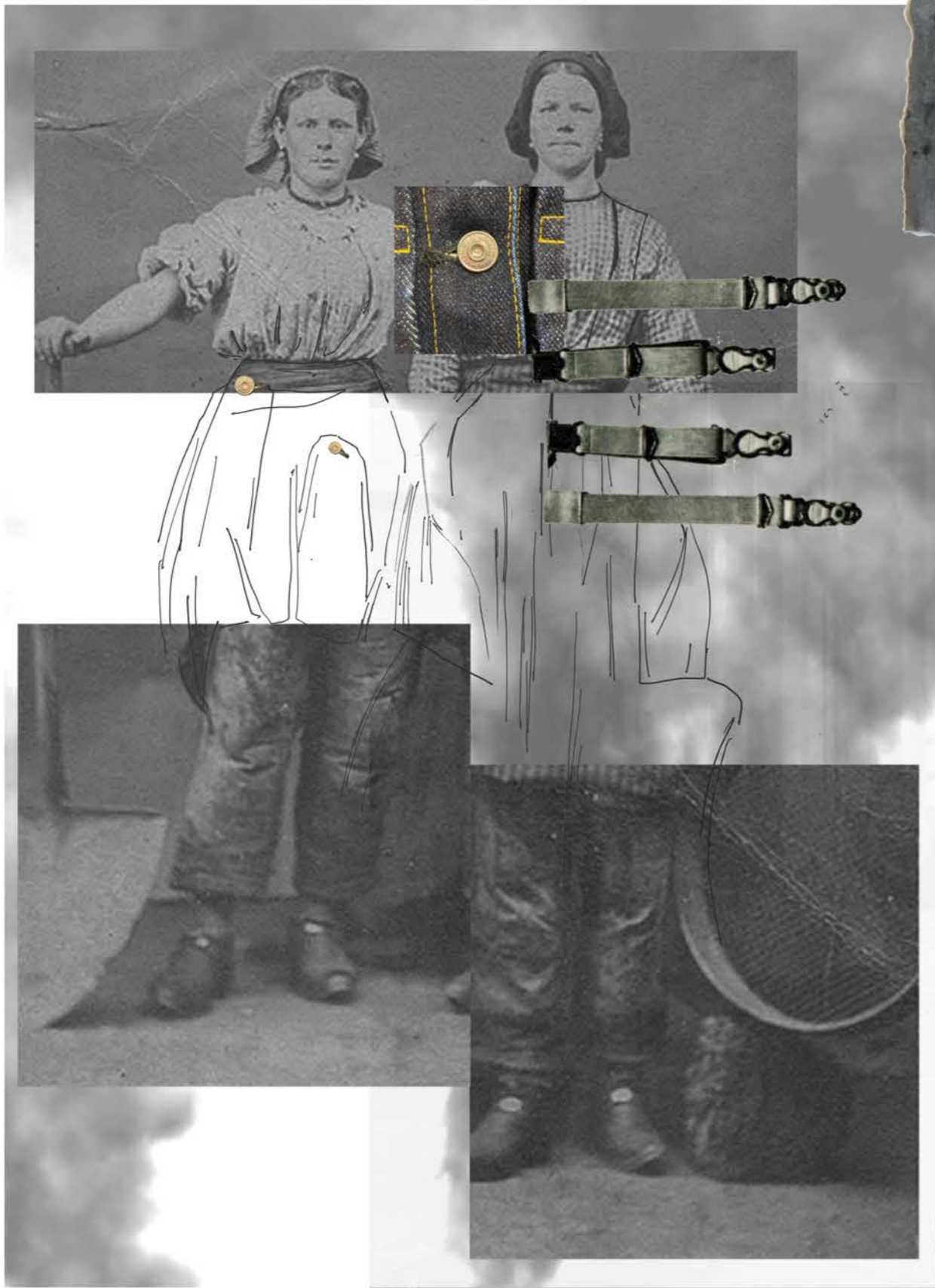
*following the shape of skirt
weight* → *light weight fabric - keeps shape but doesn't drop how intended*



*gather to fit
Mid weight fabric - slight drape*



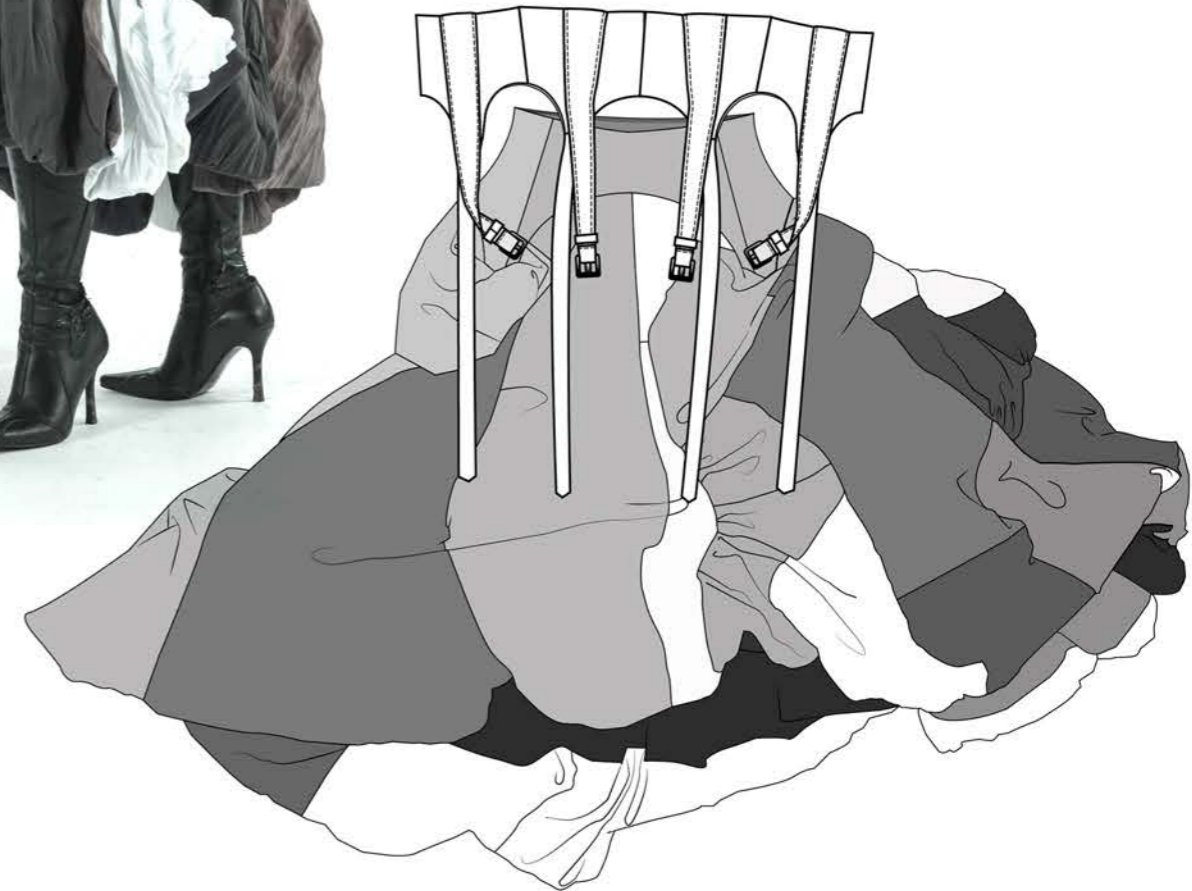
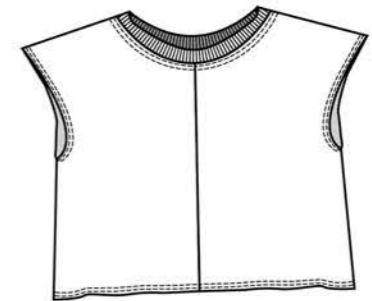
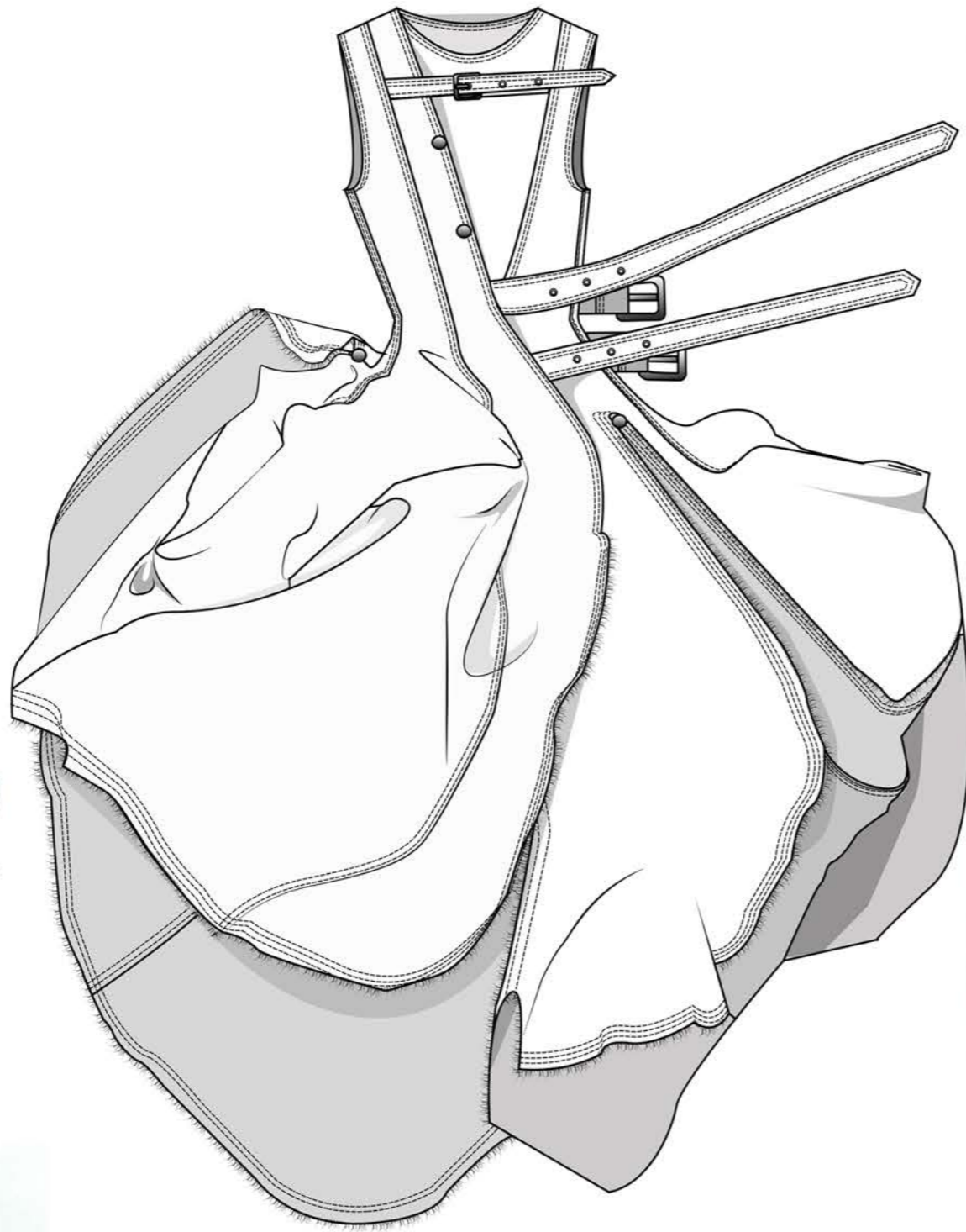
THE DEGRADATION



THE DEGRADATION

KITTY ELLIS A/W2024

NATURAL + DEADSTOCK DENIM AND WOOL.



THE DEGRADATION



THE DEGRADATION

KITTY ELLIS A/W 2024