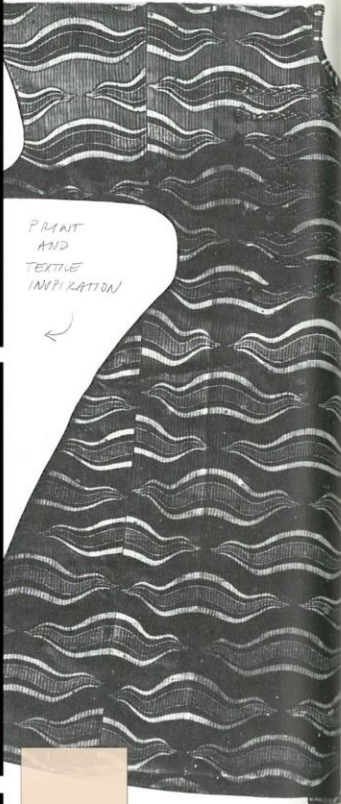
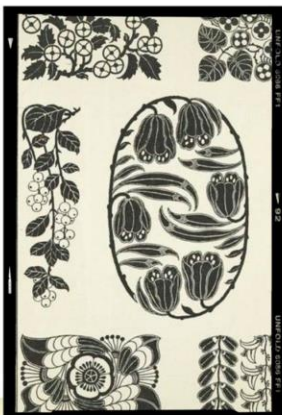
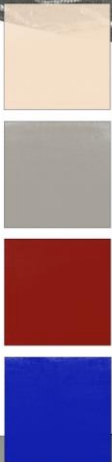


RESEARCH INSPIRATION AND MOOD



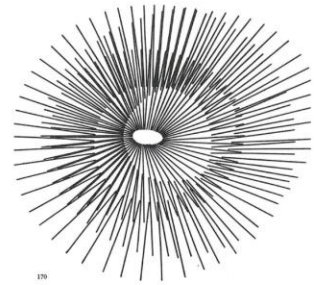
PRINT AND TEXTILE INSPIRATION



FUNDAMENTAL COLOUR PALETTE



LINEAR ART



GREEK VASE



TEXTILE SWATCHES



FOLK COSTUME



→ LOOK 7 VEST



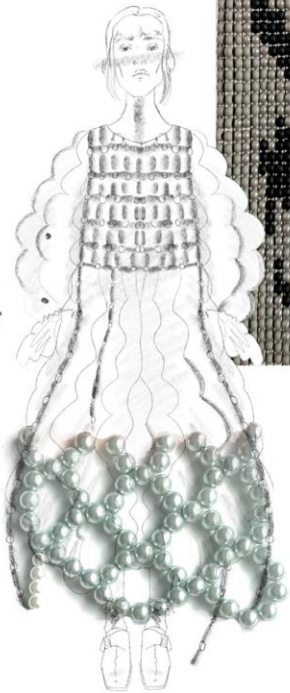
BEADWORK

LARGE SCALE
DIY BEADING LOOM
I DESIGNED



30 UNITS

62 UNITS



BEADED
VEST /
ACCENTORY

FIND YOUR TEACHERS IN THE VOICE OF THE FORESTS

FIND YOUR TEACHERS IN THE VOICE OF THE FORESTS



TOILE PROCESS





DULCE PERICULUM

RED x BLUE

BIG POCKETS

LOOK 5 DEVELOPMENT

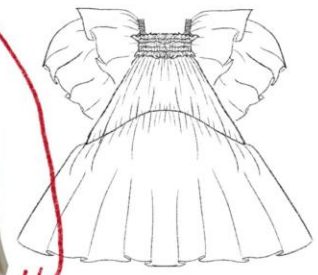
ANIMAL VEST

SCREEN PRINTED TIGER IN A VELVET FABRIC



SAMET VELVET IN GREY

TIGER PRINT INDICATED TO ADD THE REQUIRED VOLUME



ADD VOLUME

DESIGN DEVELOPMENT

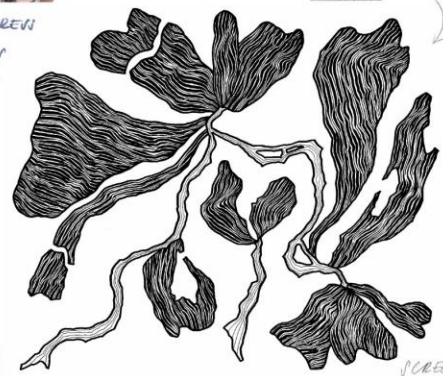




LOOK 1



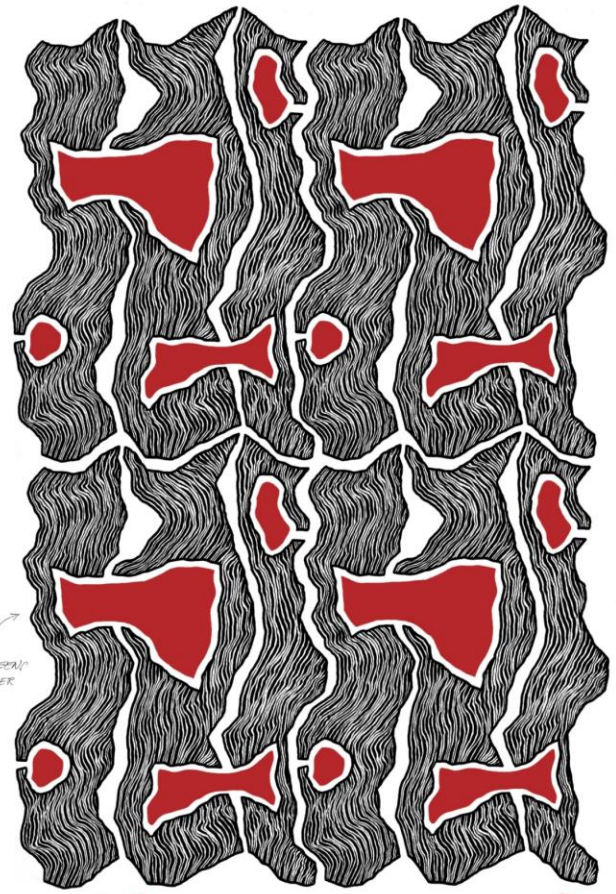
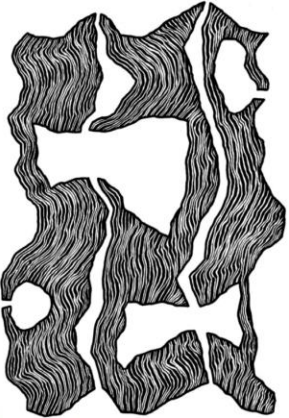
SCREEN PRINTED DRESS WITH FLORAL MOTIFS USING TWO SCREENS



PATTERN LAYOUT:



LOOK 2

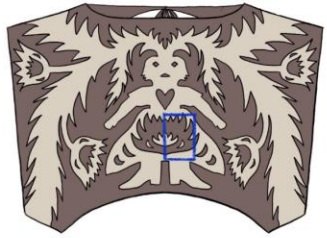


OURIBORIS
(ANCIENT EGYPTIAN
SYMBOL)
→ APPLIQUE

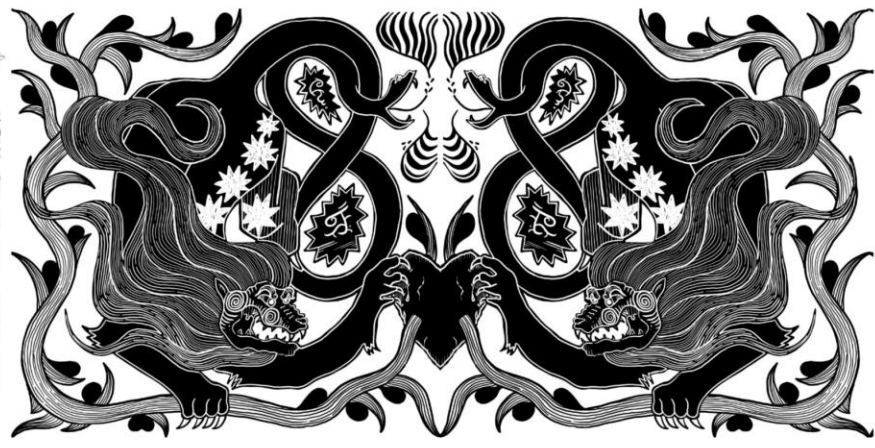


LOOK 3

↳ LODGE APPLICABLE
↳ CATION INTIN



DIGITAL PRINT FOR
THE WARM HUG OF THE WARM



BEADED
VEST

DIGITALLY
PRINTED
DRESS
WITH TWO
DIFFERENT
PRINTS ON
EACH SIDE

PRINT
APPLIED TO
AN ACCESSORY

↳ VERT II
ON THE CF &
CB

DIGITAL PRINT FOR
THE BEST HUG OF THE WARM



DIGITAL PRINT DESIGN



THIRD
TOILE

ZIPPER



EXPOSED
BACK

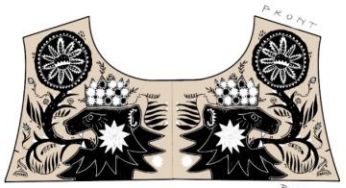
LOOK 4



COTTON TATIN



PRINT LAYOUT



FRONT



BACK



FRONT

BACK



DIGITALLY PRINTED DRESS

BEARD VEST



FIRST TOILE



LOOK 5

DIGITALLY PRINTED DRESS +
SCREEN PRINTED VEST



PRINT OF
A FACE
ON EACH
SLEEVE

VELVET

DIGITAL PRINT / DRESS

SCREEN PRINTED
TIGER VEST WITH
EMBROIDERED AND
BEADED DETAILS



PRINT
PLACEMENT



DIGITALLY PRINTED COTTON SATIN

VELVET



THE LOVERS.

DIGITALLY PRINTED DRESS WITH A BLUE VELVET BODICE

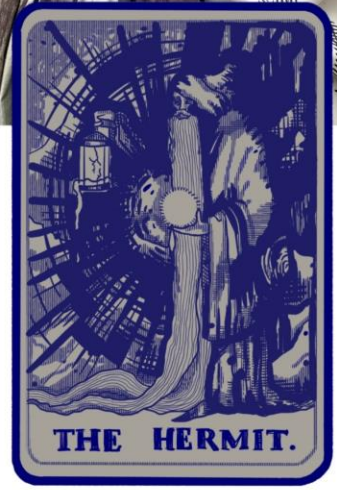
LOOK 6



PRINT LAYOUT: 2

FRONT

BACK



THE HERMIT.

POCKET WITH TAROT CARD PRINT



THE KNIGHT

ILLUSTRATION INSPIRED BY GIFF



LEFT SLEEVE

RIGHT SLEEVE

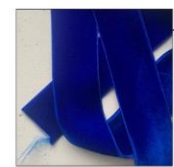
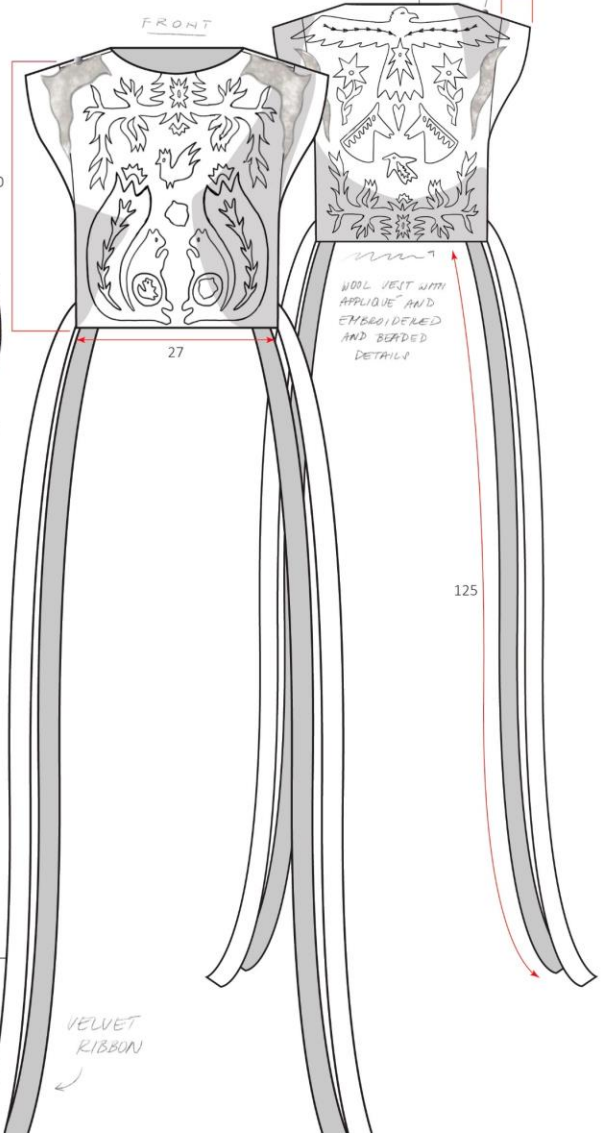
POCKETS



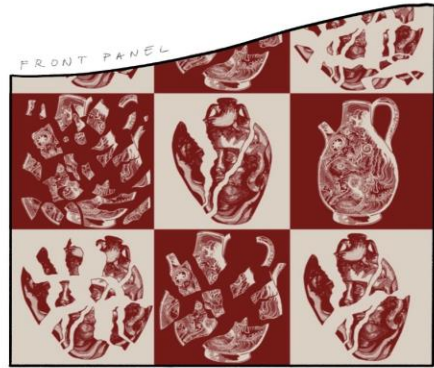
LOOK 1 - TECH. BOARD



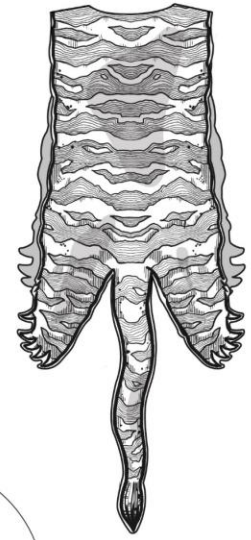
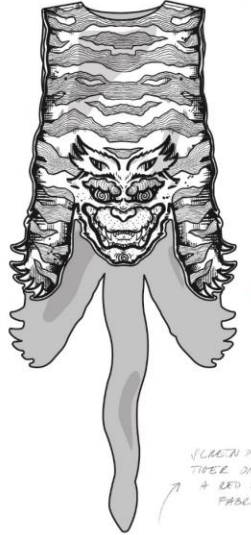
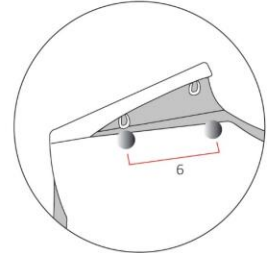
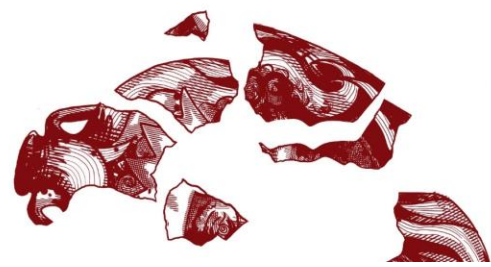
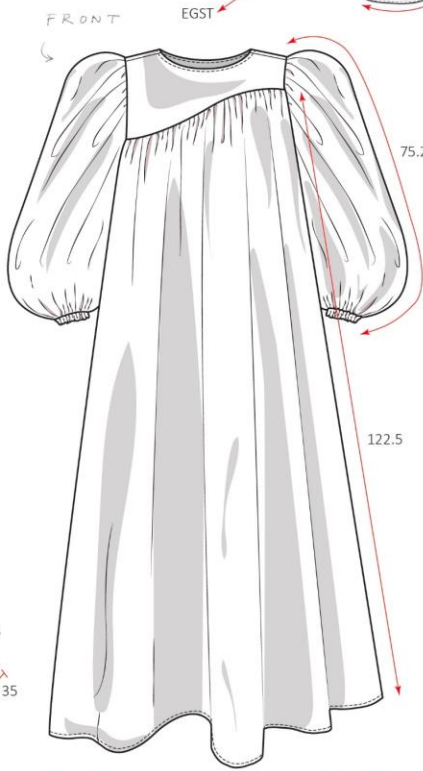
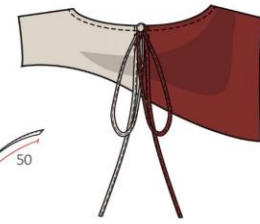
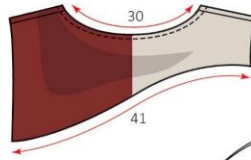
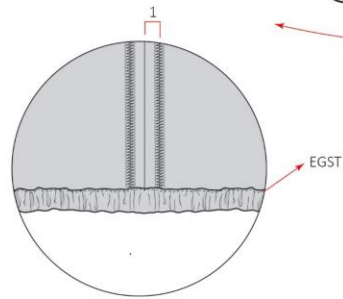
SCREEN PRINTED
DESIGN ON 100%
LINEN FABRIC



PRINT LAYOUT :



LOOK 5
TECH. BOARD



1.2

(LACED PRINTED TIE ON A RED VELVET FABRIC)

67

112

COLLECTION LINE-UP





The voice of nature
calls from tree to tree.
Asking to reconsider,
just where we'd rather be.

A river roars, it shouts, exclaims:
'No mountain will stop my flow'.
It welcomes us to dive and swim,
to rest our feet; to drink and grow.

The mountain stands so high and tall,
but even it must shrink and break.
On nature's call, it too must join,
as do we, despite the futures that we make.

Ashes to ashes, dust to dust,
changes rules and grinds away.
Reduces, builds up again
nothing is wasted, everything stays.

Control is illusion, a mere attempt
to deafen us from nature's voice.
But nature does not need consent,
we belong to it, there is no choice.

We come and go, we wax and wane,
while the Mother calls us home.
In the end we are to blame,
if we don't listen anymore.