



HYSTERIA

REBECCA WOMERSLEY
REBECAWOMERSLEY15@GMAIL.COM
07487857707

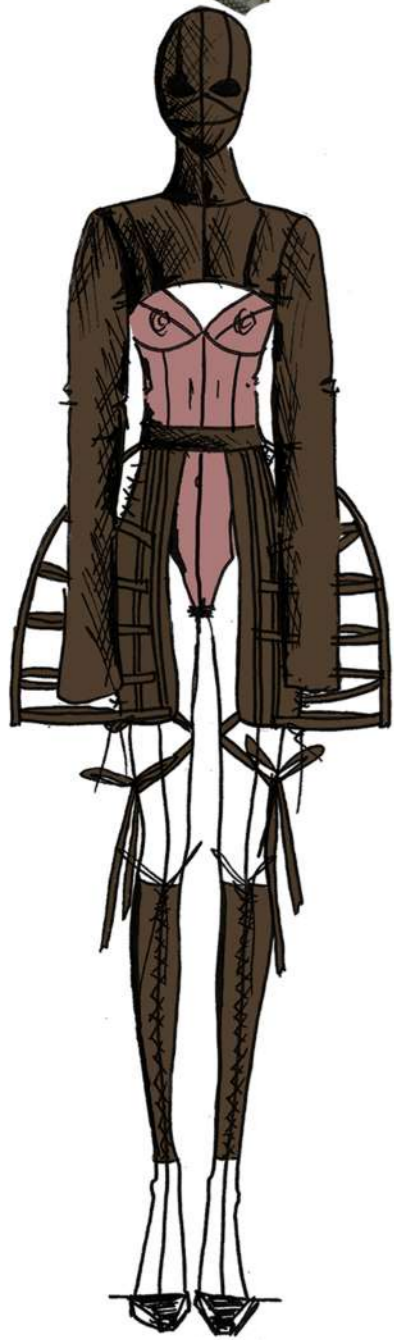
AS A DESIGNER, I FIND MYSELF CONSISTENTLY FASCINATED BY THE FEMALE BODY AND THE UNFORTUNATE HISTORY OF MISOGYNY AND OBJECTIFICATION THAT SURROUNDS IT. IT'S DISHEARTENING TO SEE HOW WOMEN HAVE BEEN SYSTEMATICALLY MARGINALIZED, THEIR CHOICES JUDGED AND THEIR DECISIONS CARRYING LASTING REPERCUSSIONS. THIS PROFOUND INJUSTICE IS SOMETHING I WANTED TO ADDRESS IN MY LATEST COLLECTION, "HYSTERIA."

FOR THIS COLLECTION, I DREW INSPIRATION FROM BOTH BONDAGE WEAR AND FETISH CULTURE, AIMING TO INCORPORATE THEIR AESTHETIC ELEMENTS INTO MY DESIGNS. I BELIEVE THAT BY COMBINING THESE INFLUENCES WITH HISTORICAL SILHOUETTES FROM THE 1800S, I CAN CREATE A POWERFUL STATEMENT THAT CHALLENGES TRADITIONAL NORMS AND REVITALIZES THEM FOR A MODERN PERSPECTIVE.

THROUGHOUT THE DESIGN PROCESS, I HAVE BEEN MINDFUL OF THE SENSITIVITY SURROUNDING THE SUBJECT MATTER. MISOGYNY AND OBJECTIFICATION ARE DEEPLY ROOTED ISSUES, AND IT'S CRUCIAL THAT MY COLLECTION PORTRAYS A MESSAGE OF STRENGTH AND EMPOWERMENT. I WANT TO HIGHLIGHT THE NEED FOR CHANGE AND SPARK CONVERSATIONS ABOUT GENDER EQUALITY AND THE DIVERSE EXPERIENCES OF WOMEN, CREATING A NEW VISUAL LANGUAGE OF HOW WOMEN ARE PERCIVED.

I UNDERSTAND THAT MY COLLECTION MAY ELICIT DIFFERENT INTERPRETATIONS AND RESPONSES. MY ULTIMATE GOAL IS TO FOSTER THOUGHTFUL REFLECTION AND CONTRIBUTE TO A MORE INCLUSIVE AND EQUAL FUTURE. I HOPE TO CHALLENGE SOCIETAL NORMS, CELEBRATE THE RESILIENCE OF WOMEN, AND INSPIRE POSITIVE CHANGE.





LOOK 1

WAXED COTTON- DARK BROWN : BALACLAVA JACKET.
 SATIN- DARK BROWN: LINING FABRIC.
 LATEX - DUSTY PINK: BODYSUIT.
 LAMB NAPPA LEATHER- DARK BROWN:
 CAGE SKIRT AND LEG STOCKINGS.
 BRASS TRIMMINGS: EYELETS, ZIP.



LOOK 2

LAMB NAPPA LEATHER- KHAKI :JACKET.
 WAXED COTTON - SHEER CREAM: TOP SKIRT.
 LINEN - BEIGE: CAGE SKIRT.
 LAMB NAPPA LEATHER - BEIGE: UNDERSKIRT .
 BRASS TRIMMINGS: BUCKLES, EYELET.



LOOK 3

LAMB NAPPA LEATHER- ORANGE, TROUSERS.
 SILK- ORANGE: LINING ON TROUSERS.
 LIQUID LATEX WITH WHITE LACE JERSEY.
 TRANSLUCENT GLOVES.
 BRASS TRIMMINGS: BUTTON, ZIP AND EYELETS.



LOOK 4

NAPPA LEATHER - WINE RED: -JACKET,
 HAT, LEG STOCKINGS.
 POWER MESH - BLACK: FRILLY PANTS.
 BLACK TRIM ON PANTS.
 BRASS TRIMMINGS: EYELETS, ZIPS, D-RINGS
 AND RIVETS



LOOK 5

LIQUID LATEX WITH BLACK LACE JERSEY:
 GIMPSUIT & SKIRT.
 BLACK LATEX GLOVES.



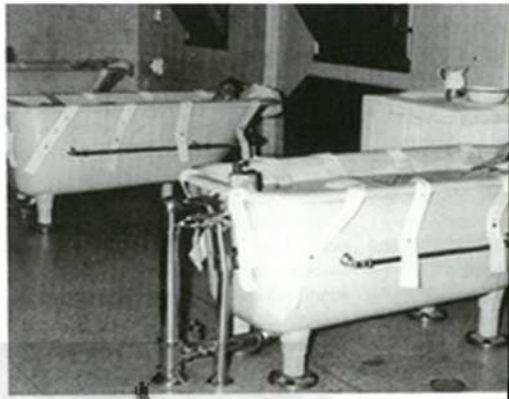
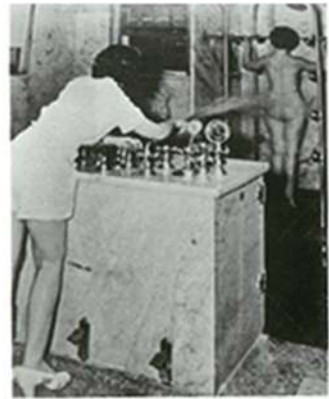
LOOK 6

LIQUID LATEX WITH BLACK LACE JERSEY:
 FRILLY BRA.
 LAMB NAPPA LEATHER- WINE RED: SKIRT.
 WINE RED SATIN: LINING.
 BLACK LATEX: THONG, GLOVES.
 BRASS TRIMMINGS: ZIP.

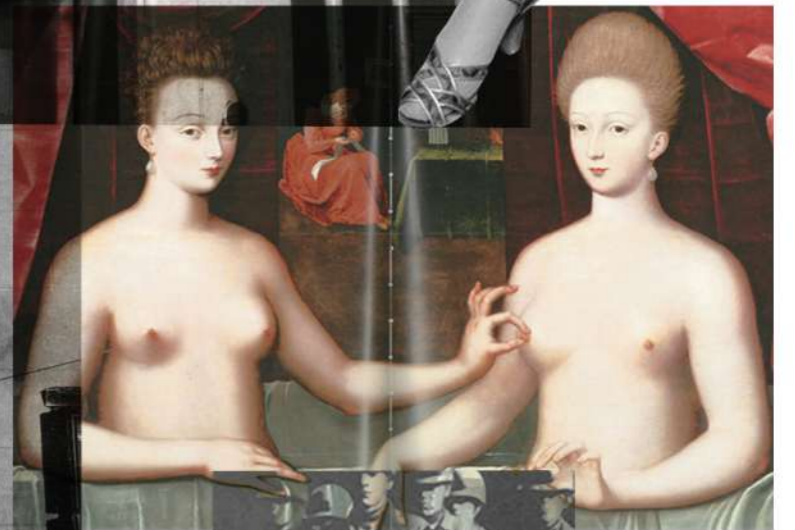


LOOK 7

WAXED COTTON- DARK BROWN: JACKET AND SKIRT.
 SATIN -DARK BROWN: LINING ON JACKET AND SKIRT.
 BRASS TRIMMINGS: ZIP.
 BLACK NETTING: UNDERSKIRT.
 BLACK COTTON: CAGE SKIRT.



Left: Mississippi State Hospital from Baxter and Hathcox, *America's Care of the Mentally Ill: A Photographic History*, 1994. Right: Mayview State Hospital from Morrison, *The Physician, the Philanthropist, and the Politician: A History of Public Mental Health Care in Pennsylvania*, 2007.



FEMALE HYSTERIA WAS ONCE A COMMON MEDICAL DIAGNOSIS FOR WOMEN, WHICH WAS DESCRIBED AS EXHIBITING A WIDE ARRAY OF SYMPTOMS, INCLUDING ANXIETY, SHORTNESS OF BREATH, FAINTING, NERVOUSNESS, SEXUAL DESIRE, INSOMNIA, FLUID RETENTION, HEAVINESS IN THE ABDOMEN, IRRITABILITY, LOSS OF APPETITE FOR FOOD OR SEX, (PARADOXICALLY) SEXUALLY FORWARD BEHAVIOUR, AND A "TENDENCY TO CAUSE TROUBLE FOR OTHERS".

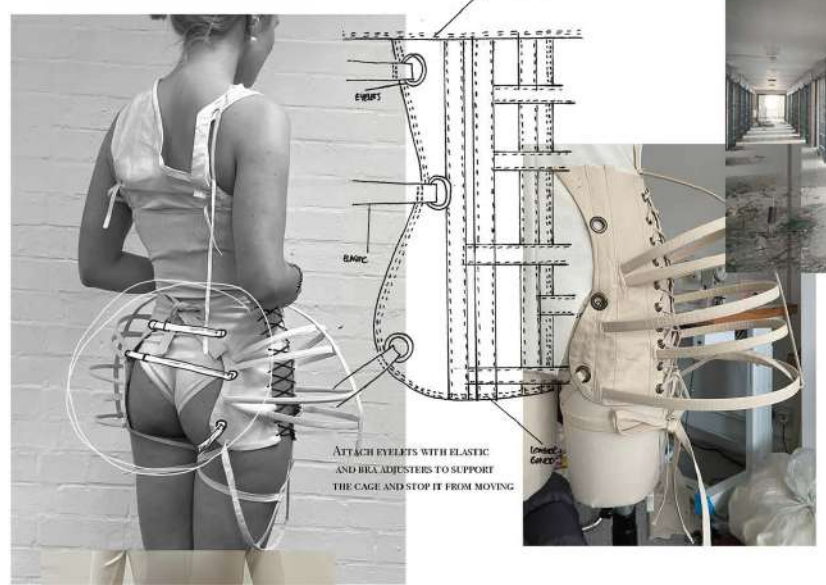
LOOK 1



ARCHIVE SOURCE PIECES



DEVELOPEMENT



ATTACH EYELETS WITH ELASTIC AND BRA ADJUSTERS TO SUPPORT THE CAGE AND STOP IT FROM MOVING

MAKE AMENDMENTS TO WAIST BAND. ATTACH LARGE BOW WITH TRAYS TO THE BACK WAISTBAND. THE THREAD THROUGH TO BOW WITH EYELETS.



1800S BUSTLE



1ST TOILE

REMOVE OUTER SHELL TO MAKE THE CAGE NAKED.

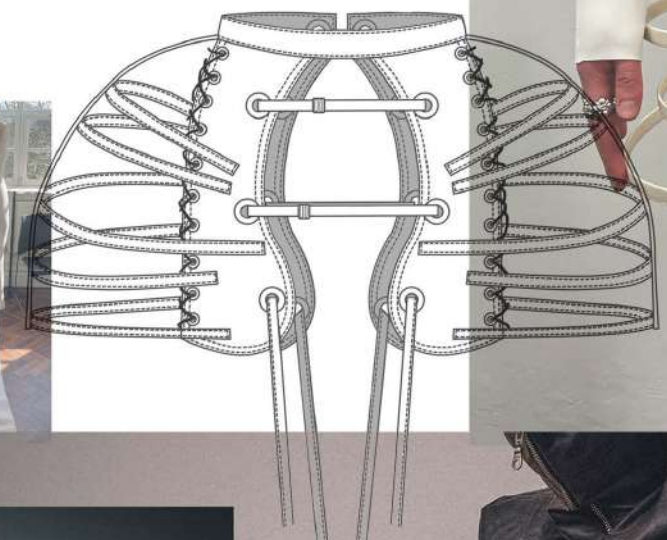


2ND MORE REFINED TOILE



LOOK 1

ADD FLOOR LENGTH LARGE BOW TO TRAIN DOWN TO THE FLOOR.



FINAL TOILE CAGE SKIRT, BOW & LEG STOCKINGS LOOK 1.



CAGE SKIRT & LEG STOCKINGS - DARK BROWN LEATHER BOW - WAXED COTTON



LEG STOCKINGS ARE ATTACHED AT THE FRONT WITH LACING, STIRRUP STYLE BOTTOM WITH ELASTIC UNDER THE SHOE FOR COMFORT WHILST WALKING.



USING THE BOW ACCENT THROUGHOUT MY DESIGNS REFERRING BACK TO 1800S DRESSES AND ACCESSORIES





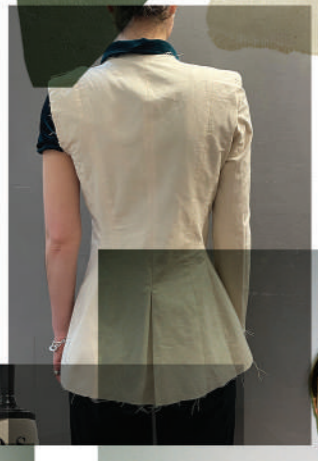
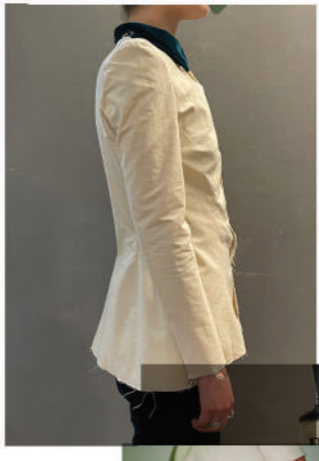
LOOK 2.



Collection Spitzner n° 129
Opération charisme



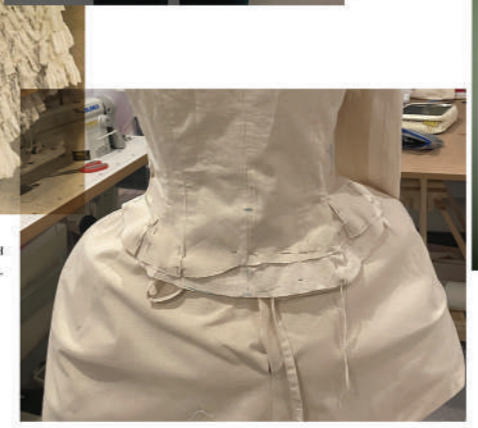
1ST TOILE



FINAL FITTINGS.



I WANTED TO ENCOPERATE BOTH THE GAGE SKIRT AND FRILL WHICH WAS INSPIRED FROM THIS 1800S DRESS.

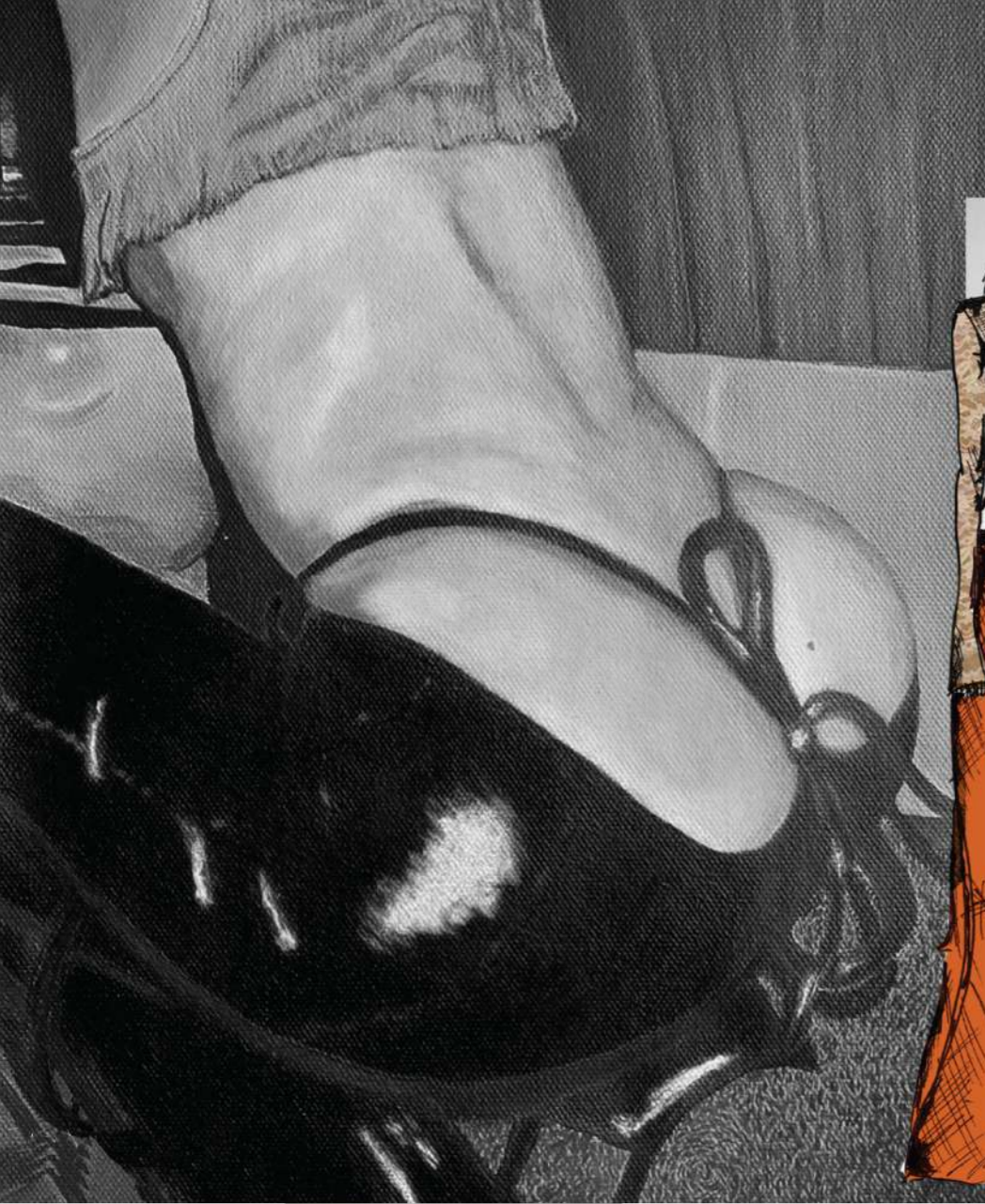


I WANTED THE JACKET TO DRAPE AROUND THE GAGE SKIRT BUT STILL KEEP THE SILHOUETTE



TOILE OF THE FRILLY SKIRT





Look 3

DEVELOPMENT



COMBINING THE SAME 3D ELEMENT FROM BATWING COAT



ADD BOW TO CENTER BACK



1ST TOILE



USING THE 3D SECTION FROM THE BATWINGED COAT I RE-INTRODUCED THE SAME SILHOUETTE INTO THE TROUSERS. THE ORIGINAL INSPIRATION FOR THE SHAPE WAS THROUGH USING BRUTALIST ARCHITECTURE WITH SIMPLE BLOCK-LIKE FORM.



MOCK UP SHAPE 3D SECTION

2ND TOILE



FIT WAIST AND - REDUCE BY 2CM FROM EACH SIDE - START THE 3D PANEL FROM THE LINES SHOWN ON FRONT AND BACK TO AVOID THE ZIP SHIFTING - NOTCHED ON PATTERNS.



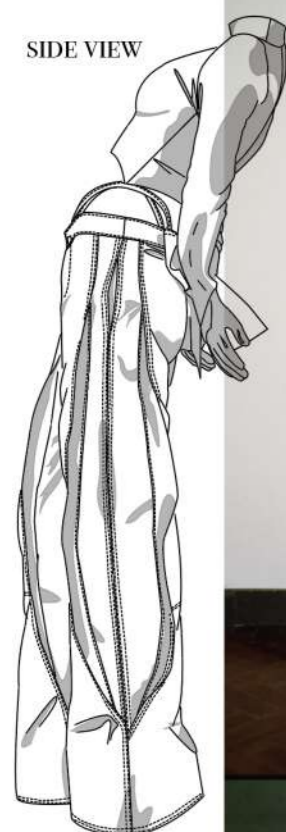
CHANGE THE SHAPE OF THE CR PANEL - INTRODUCE THE BIKER BUM PAD SILHOUETTE.



FINAL FITTING PHOTOS

AVAILABLE FOR THE DESIGN AND FITTING AND FROM STOCK LINE.

SIDE VIEW



REBECCA WOMERSLEY
REBECCAWOMERSLEY5@GMAIL.COM
07487857707

LIQUID LATEX GIMPSUIT

DEVELOPEMENT PROCESS LOOK 5.

1ST TOILE OF LATEX GIMP SUIT

LOOK INTO SLEEVE CUFFS OR GLOVES TEST THIS WITH THE LATEX AND SEE IF ITS POSSIBLE AS THE LATEX WILL NEED TO BE AT 0.5 THICKNESS.



BALACLAVA HEADPIECE

BALACLAVA TOILE.

FRONT

SIDE

BACK

FINAL TOILE

EXTEND LEG TRAIN TO DRAPE ON THE FLOOR.

ATTACH GLOVES

SPLIT THE BODY STOCKING INTO PANELS AT THE FRONT & BACK OF THE BODICE USING THE PRINCESS SEAM LINES. EXTEND THE TROUSER LEG LONGER AND WIDER INTO A WIDE STRAIT LEG FIT.

NECK AMENDMENTS

LATEX SAMPELING



LIQUID LATEX 0.5MM WITH LACE SUBMERGED & SCREEN PRINTING.



LIQUID LATEX 0.5MM BLACK AND WHITE LACE SAMPLE.



LATEX SHEET SAMPLE WITH SCREEN PRINTING.



FINAL DEVELOPED SAMPLE THAT I TOOK FORWARD INTO THE MAKING PHASES.



DURING THE GLUING PROCESS I FITTED THE BALACLAVA HEADPIECE TO MY MODEL BEFORE IT FULLY CURED TO INSURE THE RIGHT SHAPE AND FIT.

LATEX PROCESS



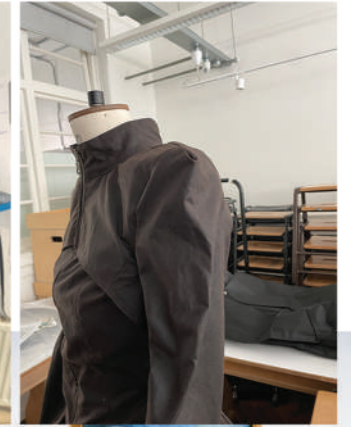
WORKING WITH LATEX WAS A COMPLETELY NEW EXPERIENCE FOR ME. I WANTED TO PUSH THE BOUNDARIES AND DEVELOP A TECHNIQUE THAT WOULD RESULT IN A DISTINCTIVE MATERIAL FOR MY GARMENTS. AFTER CONDUCTING SOME RESEARCH AND EXPERIMENTING WITH DIFFERENT METHODS I DECIDED I WANTED TO CREATE THE LATEX SHEETS MYSELF AND INCORPORATING JERSEY LACE IN-BETWEEN THE LAYERS. I BELIEVED THAT THIS COMBINATION WOULD RESULT IN A TRANSLUCENT MATERIAL WITH A WET LOOK, ADDING AN ELEMENT OF ELEGANCE AND SOPHISTICATION TO THE FINAL GARMENTS. AS THE LAYERS DRIED, THE LATEX ENCAPSULATED THE JERSEY LACE, CREATING A UNIQUE FUSION OF TEXTURES. THE TRANSLUCENT QUALITY OF THE MATERIAL ALLOWED LIGHT TO PASS THROUGH, HIGHLIGHTING THE DELICATE PATTERNS OF THE LACE. THROUGHOUT THE PROCESS, I FACED NUMEROUS CHALLENGES. ACHIEVING A CONSISTENT THICKNESS ACROSS THE SHEETS REQUIRED PRECISION AND PATIENCE. ENSURING THAT THE LATEX ADHERED TO THE LACE EVENLY WAS ALSO A DELICATE TASK. I HAD TO EXPERIMENT WITH DIFFERENT TECHNIQUES AND ADJUST MY APPROACH ALONG THE WAY. THE TRANSLUCENT MATERIAL, COMBINED WITH THE INTRICATE LACE PATTERNS, GAVE THEM A UNIQUE AND ETHERAL QUALITY.



1ST TOILE



UNDERSKIRT



DEVELOPMENT OF SLEEVE HEAD

THE TOP SKIRT PIECE WAS CARTRIDGE PLEATED BY HAND AND THEN DRAPED OVER THE UNDERSKIRT FITTED AND SHOWN TO MAKE SURE IT HAD ENOUGH VOLUME.



LOOK 7.



TAKING THE SAME SILHOUETTE FROM LOOK 2 AND THEN ADAPTED IT ADDING A STORM FLAP AND GUN SHIELD.



REBECCA WOMERSLEY
REBECCAWOMERSLEY15@GMAIL.COM
07487857707

HYSTERIA

REBECCA WOMERSLEY

PHOTOGRAPHER: KATE ROSEWELL.

MODELS: BONTLE T NONKWELO, KIT COSTELLO, GRACIE CAMERON BLACK, MEKLIT LU, EVA FELICE & AMELIA STENTIFORD.

ASSISTANT: HONOR BOSTON & CAROLINA ANZALONE.

MUA: KASIA POSTAREMCZAK.

HAIR: HAIRSTYLIST LONDON.

