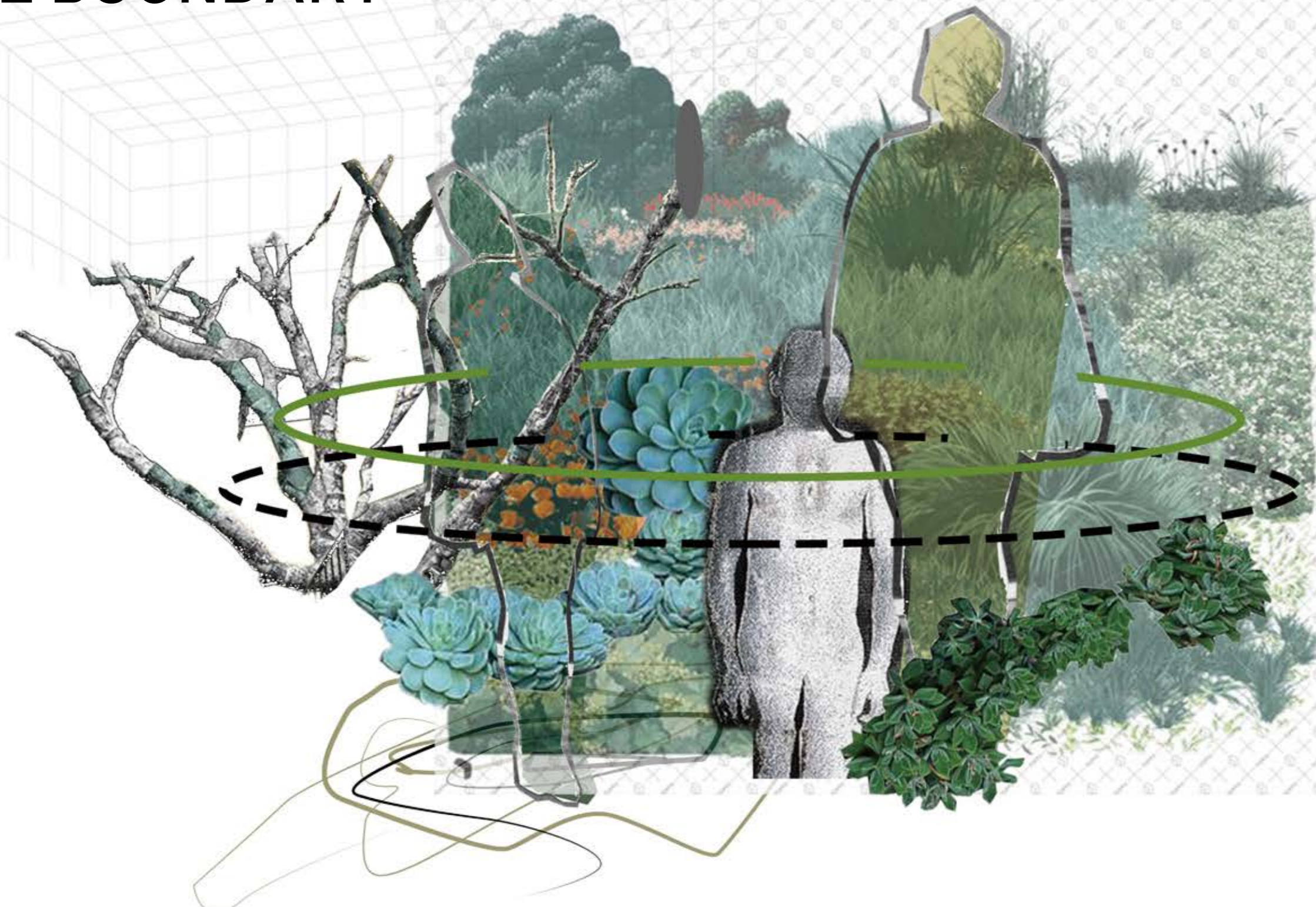


Wen Han

BEYOND THE BOUNDARY



xuwenhan0921@gmail.com
07541452235

My menswear ready-to-wear collection is inspired by Takashi Kuribayashi's art installation, which reminds me of the physical and intangible boundaries between us and plants. Plants are often domesticated to meet the needs of human survival in our environment. However, when people leave, plants gradually replace people, and this sense of invisible boundary reminds me of beekeeper. This profession, as a balance between human and nature, also brings me inspiration. Through the investigation of their uniforms and behaviors, I extracted a large number of shapes and repeatedly studied details and fabrics, and finally produced my collection of designs.

MUSE



He is a Japanese contemporary artist. Takashi Kuribayashi's works explore the boundary between human civilization and the natural world.



Tree of Ibuki 2020
"Setouchi Art Triennale 2020"

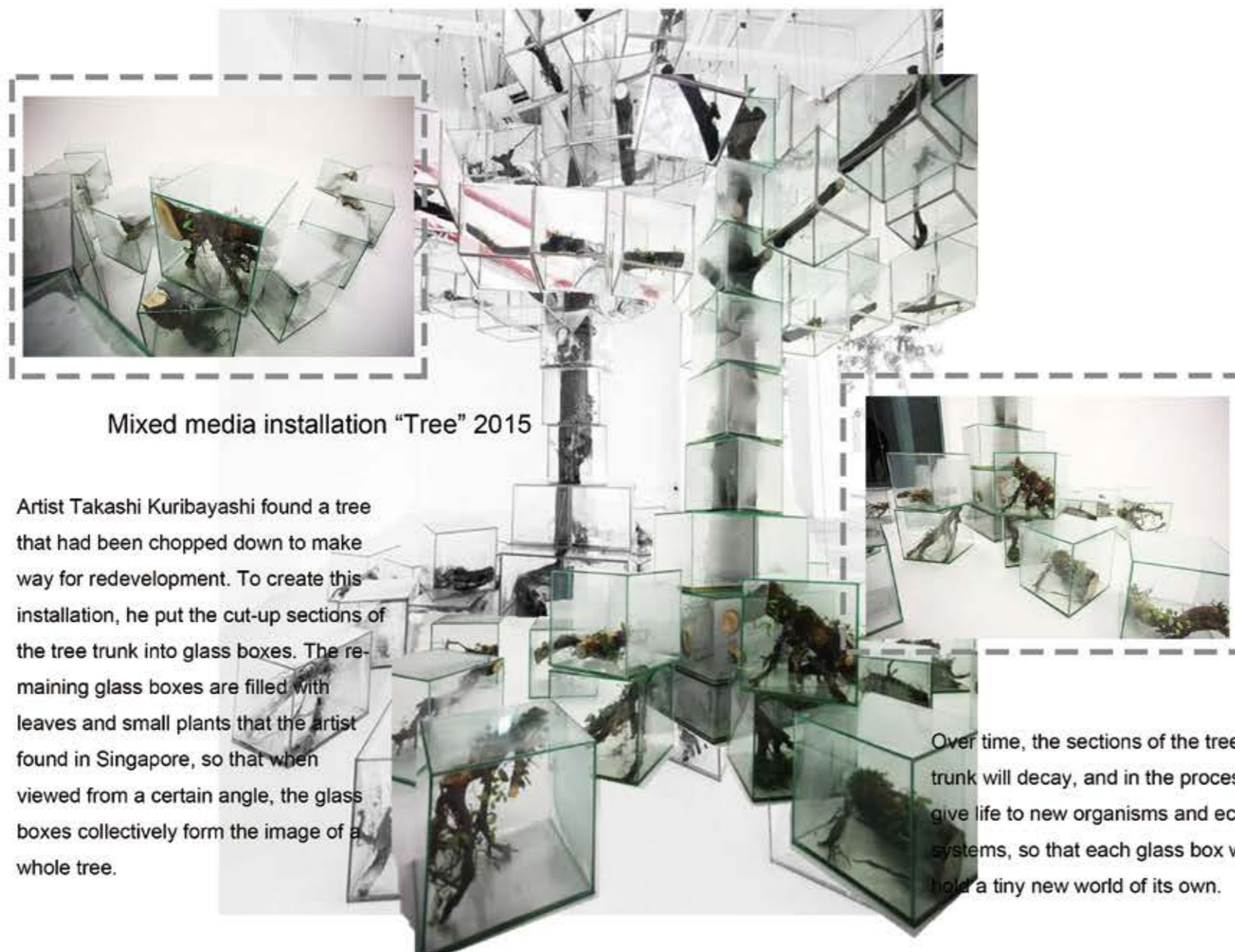


This memory of life is described as a kaleidoscope of light.



Underground Sound of Rain 2013

Sewed thousands of leaves he picked up from the garden, and hung them from the ceilings. The work is titled Underground Sound of Rain (2013). The intertwining leaves form a draping overlay that reminds us of a green-brown colour fabric with undulating contours – visually, this creates a dynamic effect.



Mixed media installation "Tree" 2015

Artist Takashi Kuribayashi found a tree that had been chopped down to make way for redevelopment. To create this installation, he put the cut-up sections of the tree trunk into glass boxes. The remaining glass boxes are filled with leaves and small plants that the artist found in Singapore, so that when viewed from a certain angle, the glass boxes collectively form the image of a whole tree.

Over time, the sections of the tree trunk will decay, and in the process give life to new organisms and ecosystems, so that each glass box will hold a tiny new world of its own.



ISLAND

2014 Wonderfruit, Pattaya Thailand
made water plant from that place.
after few year water plants go break the world.



This work is to be conscious to us, change of boundaries in modern and border unrelated to the creatures that it's human selfishness.



In our living environment, plants are often acclimatized to meet the needs of human survival, but when people leave, plants gradually replace human beings.

DESIGN DEVELOPMENT

2D-3D Draping:



The whole project uses natural elements and uses nature as texture for fabric transformation. The silhouette is the shoulder and sleeve design with large outline. The overall fabric of the coat uses texture fabric to integrate with the design concept and break the boundary between nature and human body.

Native And Cowboy:



Learn Nature pattern



Native Difference "inspired by Darwin's "Origin of Life" and "survival of the fittest", as well as a reflection on the impact of human encroachment on nature.



Also highlights the theme of the season - the former is "Natural difference," the latter is "unnatural selection", or "man-made change."

Learn the bees, leaf, Convolve



The belt button

LOOKI DEVELOPMENT

These pants were designed for structure, combining functionality with fashion. Meanwhile, the pants equippers referred to the functional clothing design of beekeeper occupation.



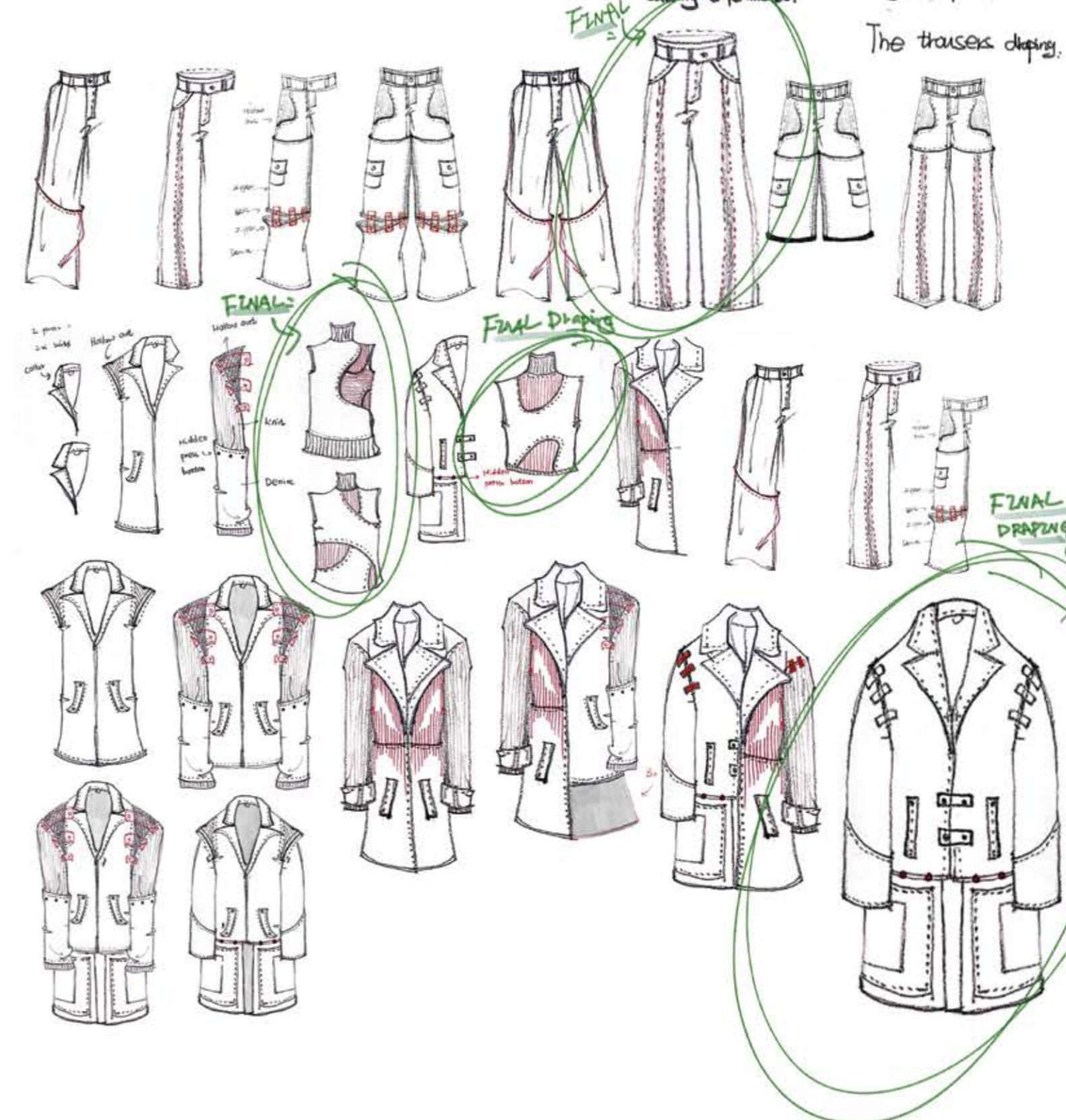
GARMENTS AND NATURE:



refer to shape coat

and Nature. Green everywhere. Green eyes. Combination with nature, Looking for green where in life.

Different pants and 2000s conventional pants were used for vertical cutting experiments. The trousers draping:



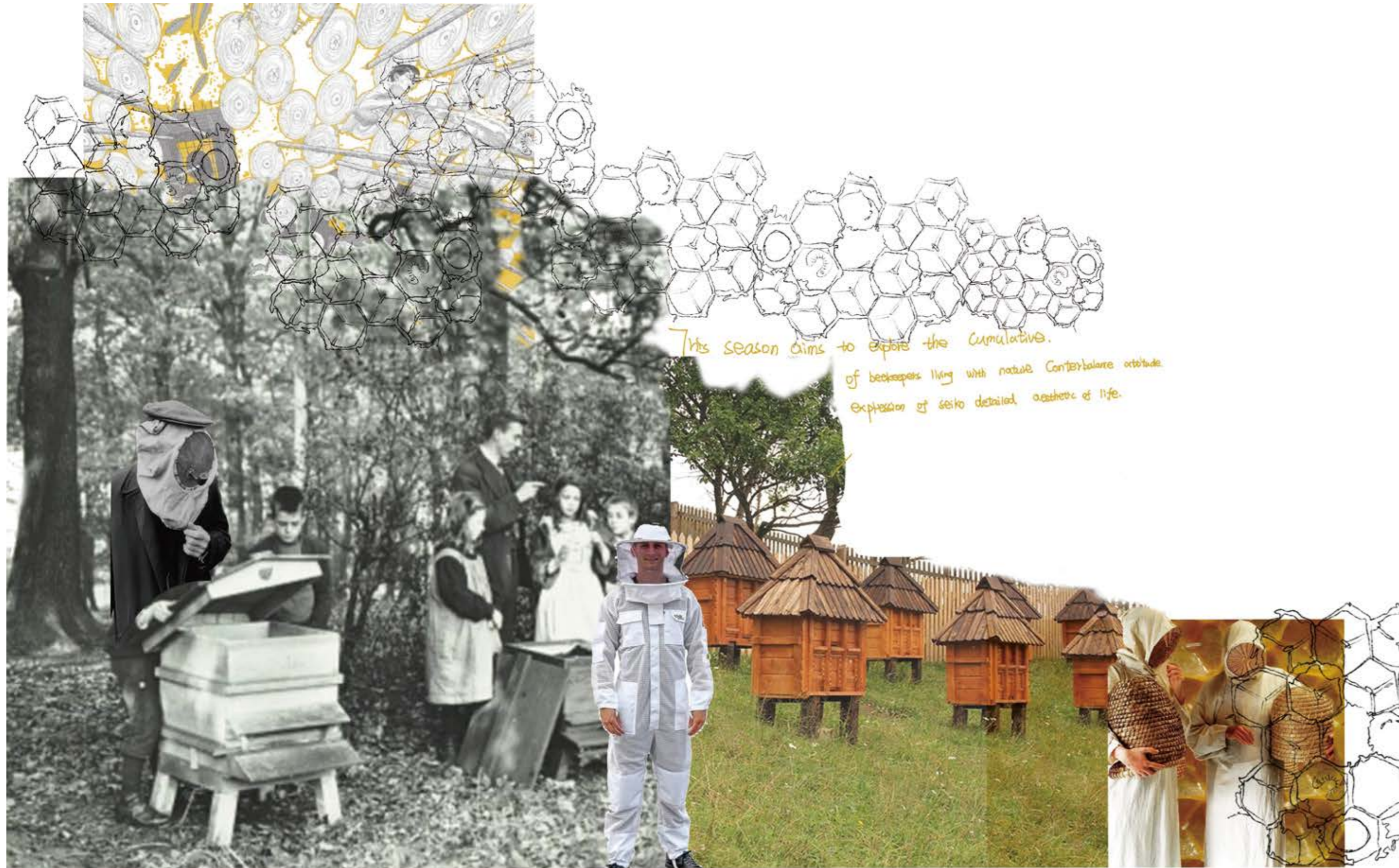
FINAL

FINAL DRAPING

FINAL DRAPING

DESIGN DEVELOPMENT

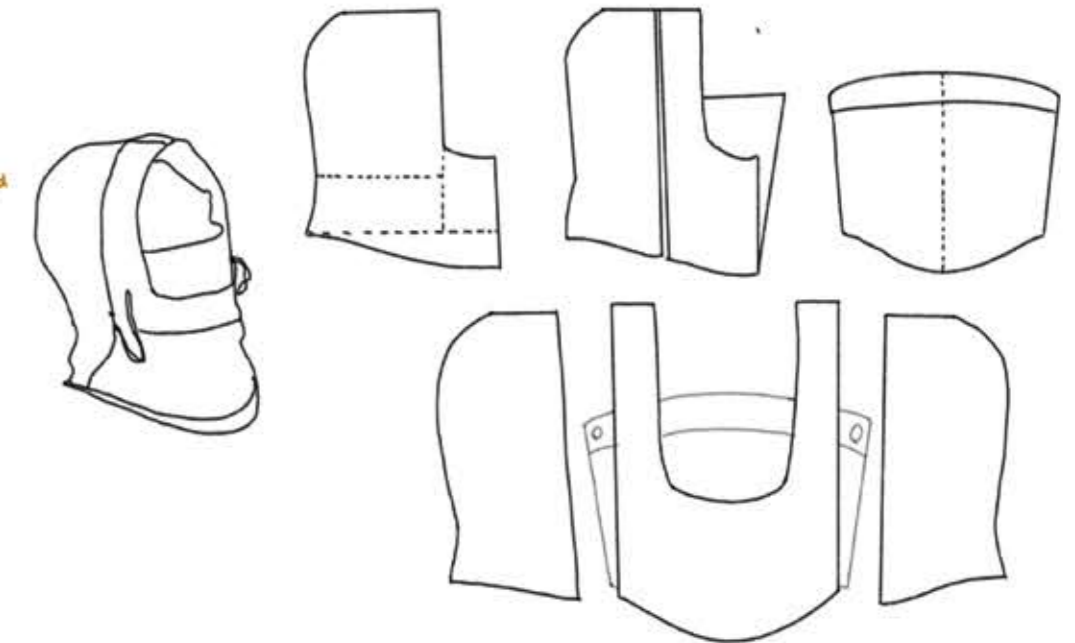
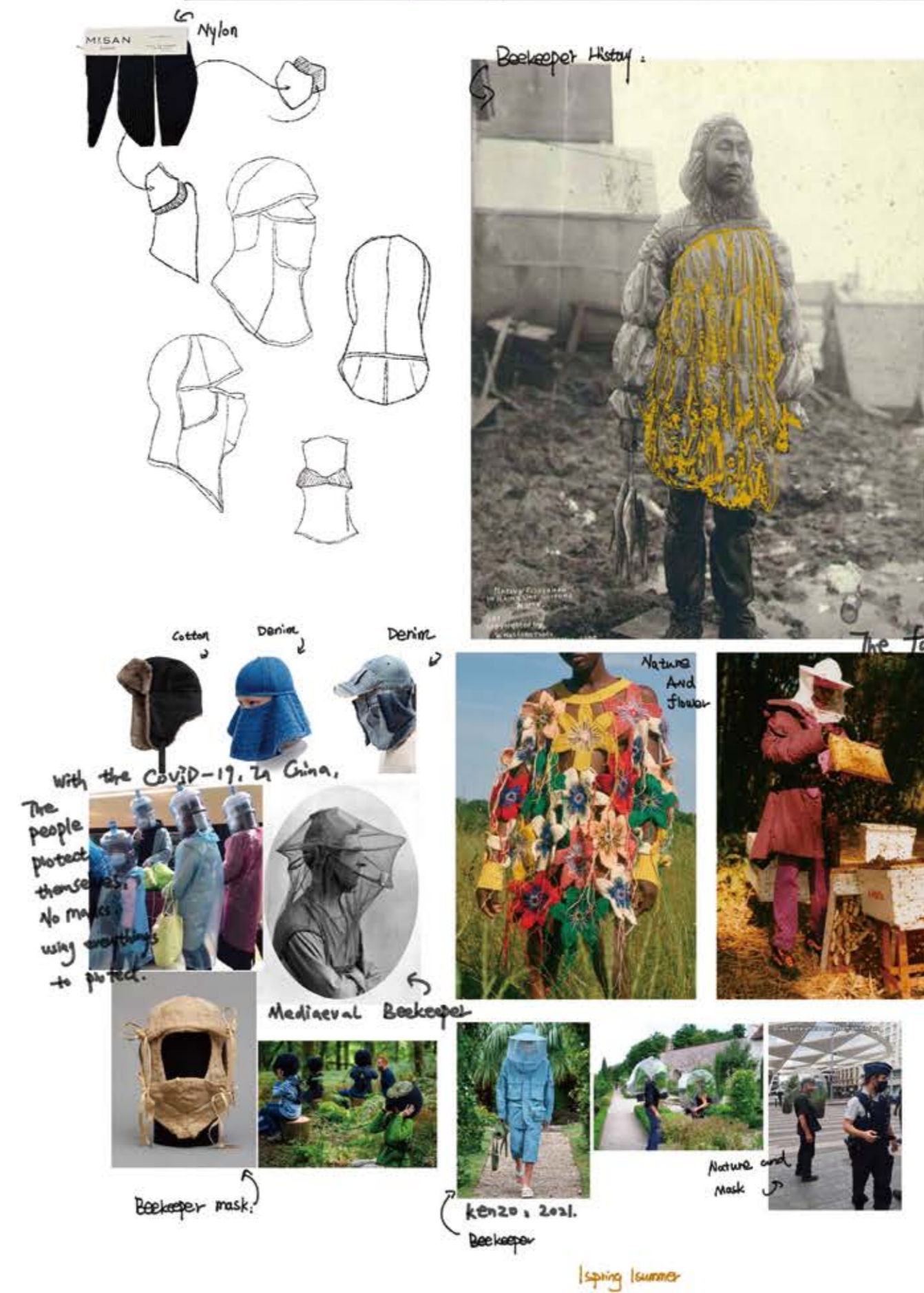
Design Development



This season aims to explore the cumulative of beekeepers living with nature. Contemporary attitude. Expression of seiko detailed aesthetic of life.

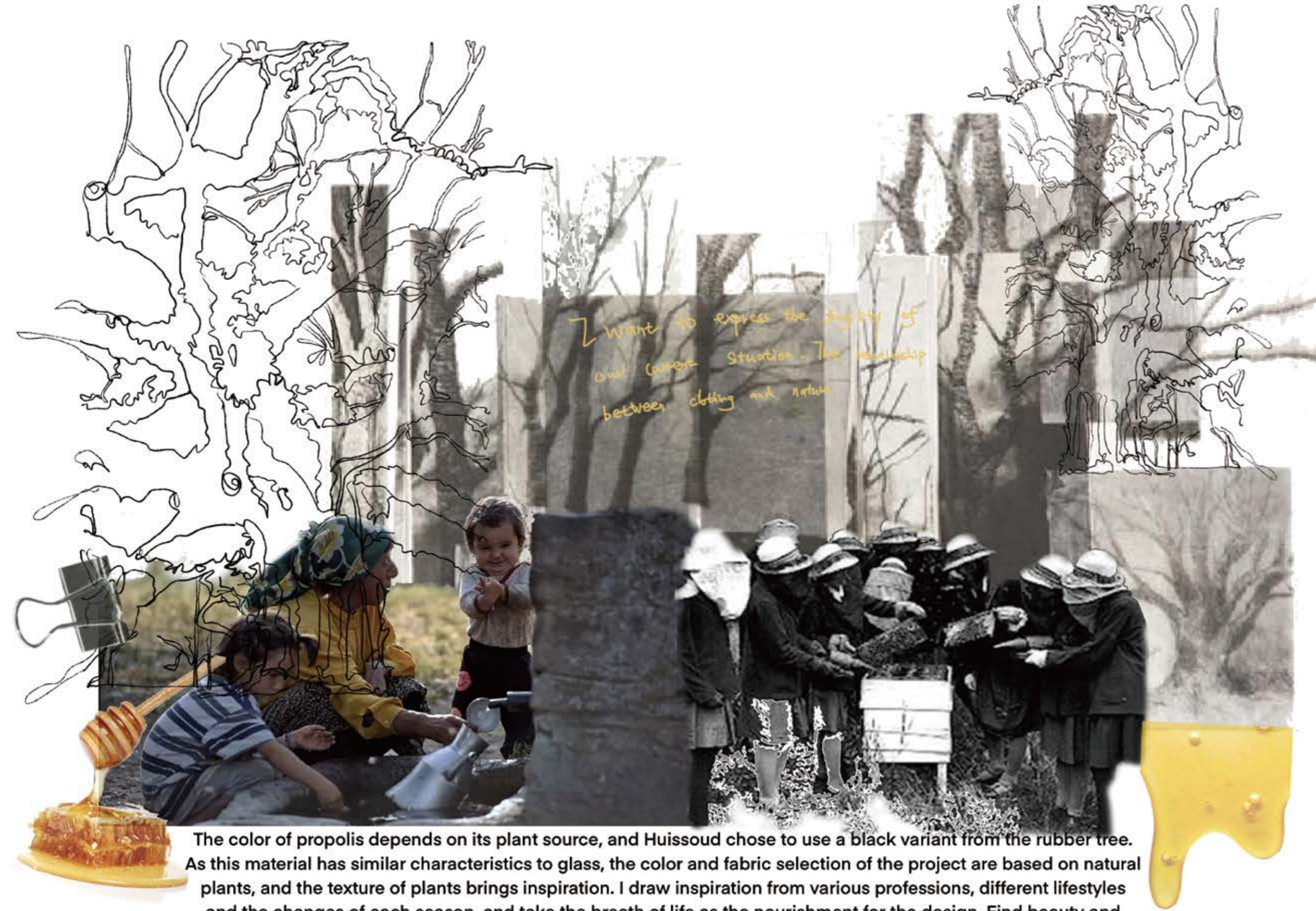
The inspiration comes from the meticulous beekeepers, who keep up with the flowering season throughout the year and adapt their feeding methods to different species at different times in different climates. They have an attitude and patience like the craftsman spirit, which gives us a lot to think about the relationship between life and nature.

Beekeeper = Research =



Beekeeper history

DESIGN DEVELOPMENT



The color of propolis depends on its plant source, and Huissoud chose to use a black variant from the rubber tree. As this material has similar characteristics to glass, the color and fabric selection of the project are based on natural plants, and the texture of plants brings inspiration. I draw inspiration from various professions, different lifestyles and the changes of each season, and take the breath of life as the nourishment for the design. Find beauty and wisdom in work. Beekeepers chasing the flowering season

DRAPING DEVELOPMENT

Look 1, Research:



Look 1, Back:

Look 1, Front:



The longitudinal extension of the curtain is related to the torso of the plant and the exploration of the deconstruction experiment of the suit, exploring the boundary between clothing and space and nature



Wrapping sense with natural growth



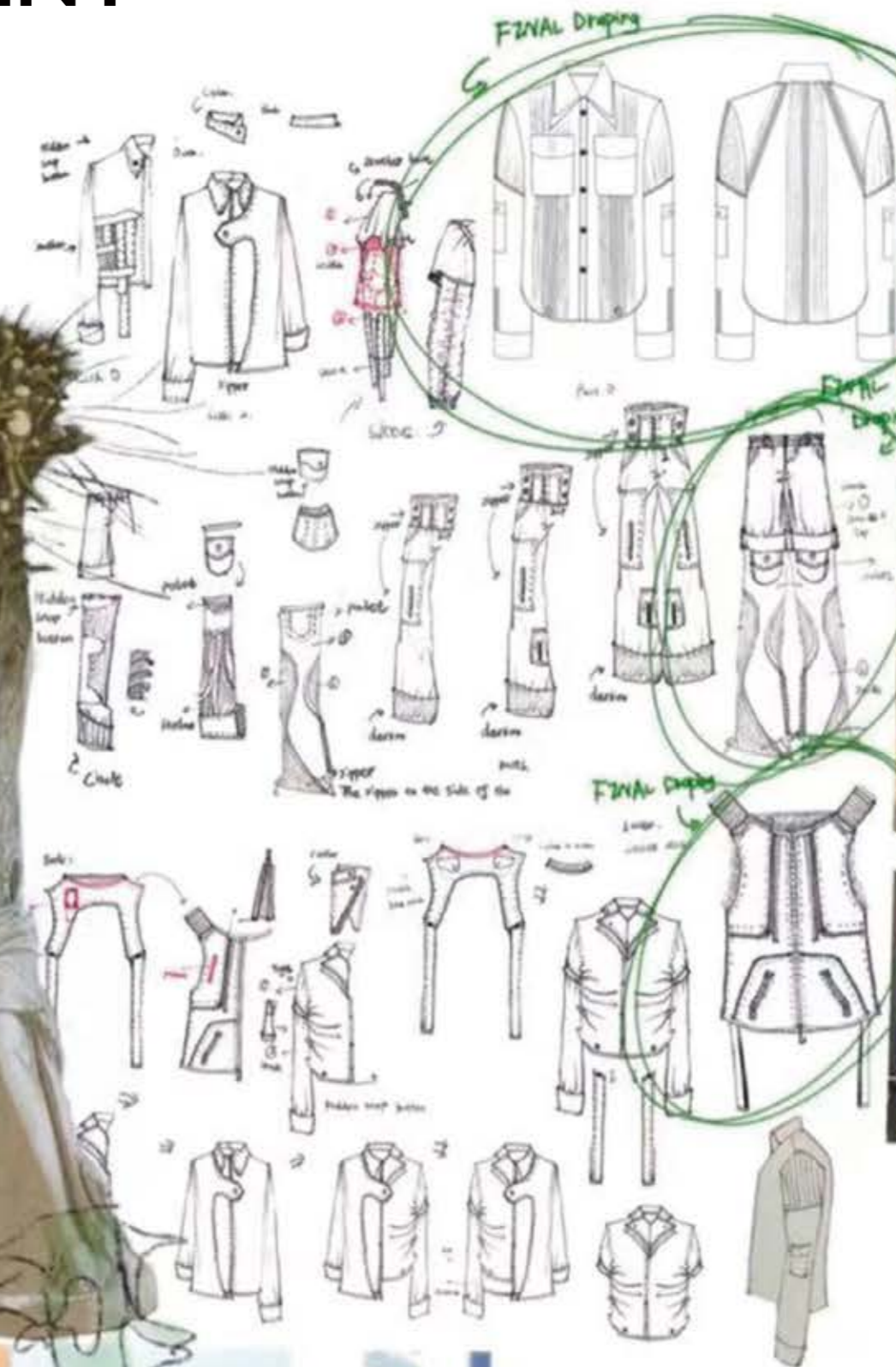
Human And Nature's Both. Together. Down.



The source is a beekeeper's coveralls, long shirts and collars that stand up to provide some protection, sleeves with pleats that resemble the body structure of a beehive, pants that are not well thought out, are stacked at the bottom. The naturally generated delicate texture is transformed into a pattern and derived from it into an artistic pattern, giving new life to the fabric. The natural texture grows according to one's heart, and each one is unique and unrepeatable. Sometimes the design must follow the nature, nature is the most beautiful art, all the beauty can grow in the natural state.

LOOK4 DEVELOPMENT


The outline experiment of the coat was inspired by the overlapping between the professional uniform of the beekeeper and the honeycomb, the sense of wrapping of the building and the feeling of indiscriminate growth of natural plants. A series of experiments on the outline of the coat were carried out, in which the harmony between man and nature and the integration of nature grew, and the color and fabric of the series of clothes were made from nature.



We live in an environment where plants are often programmed to suit human needs. And when people gradually take over. Through surveys of beekeepers and miners, this project explores the growth patterns in ruins, and thus the process of urbanization. Trying to get people to think about our relationship with nature. How can we use the natural growth of plants to create products that enhance our relationship with nature?

VEST DEVELOPMENT

My collection is inspired by the natural and man-made worlds, where plants and trees grow at irregular angles; The human body is made of curves.



The collection reflects a new appreciation for the power of nature and its ability to transcend man-made structures and break up cuboid shapes through organic forms.

INSPIRATION OF NATURE:

NATURE DEVELOPMENT

Thinking about the past, present and future world, reflecting on the relationship between man and animal, man and nature from the perspective of the third person, using fashion to express the rebellion against traditional anthropocentrism.





This is particularly resonant at a time when we are increasingly aware of our negative impact on the natural world.



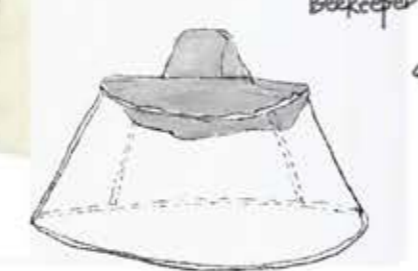
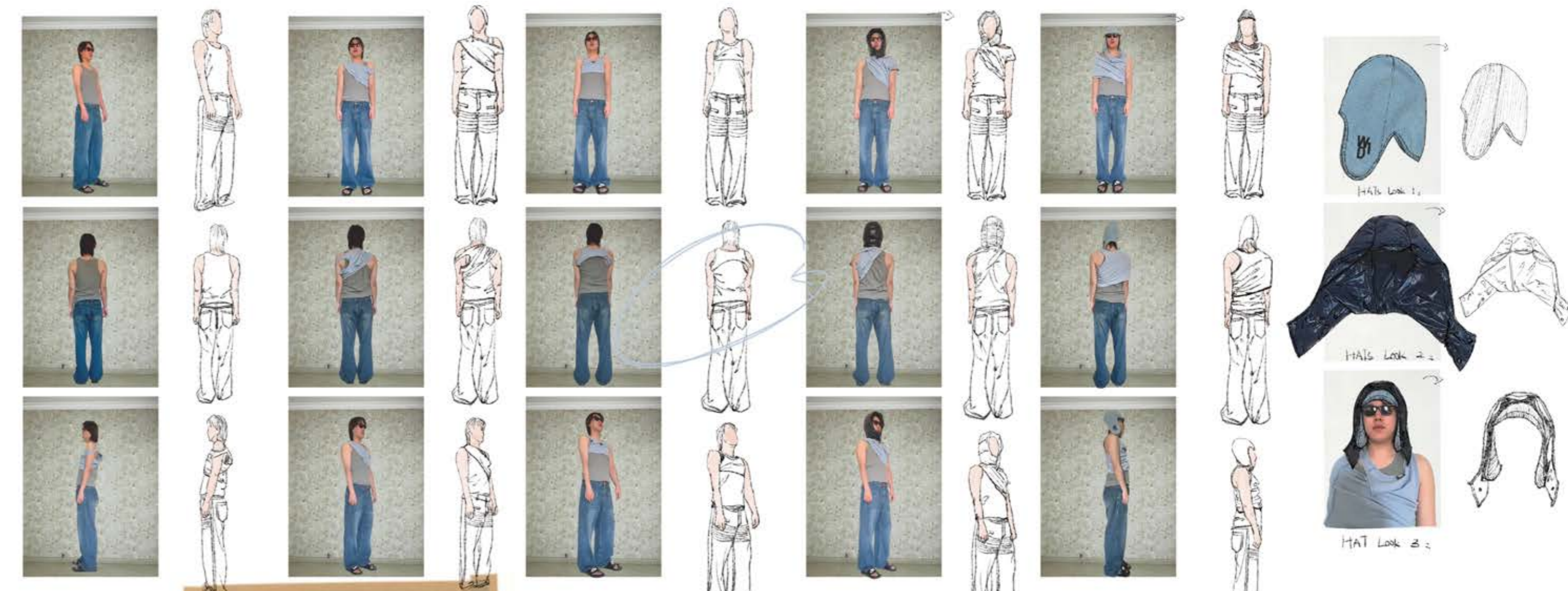
This is in stark contrast to the cuboid artificial objects around us; The buildings we live and work in, the appliances and furniture we use every day.

Yet at the same time feel powerless in the face of the full power of nature.

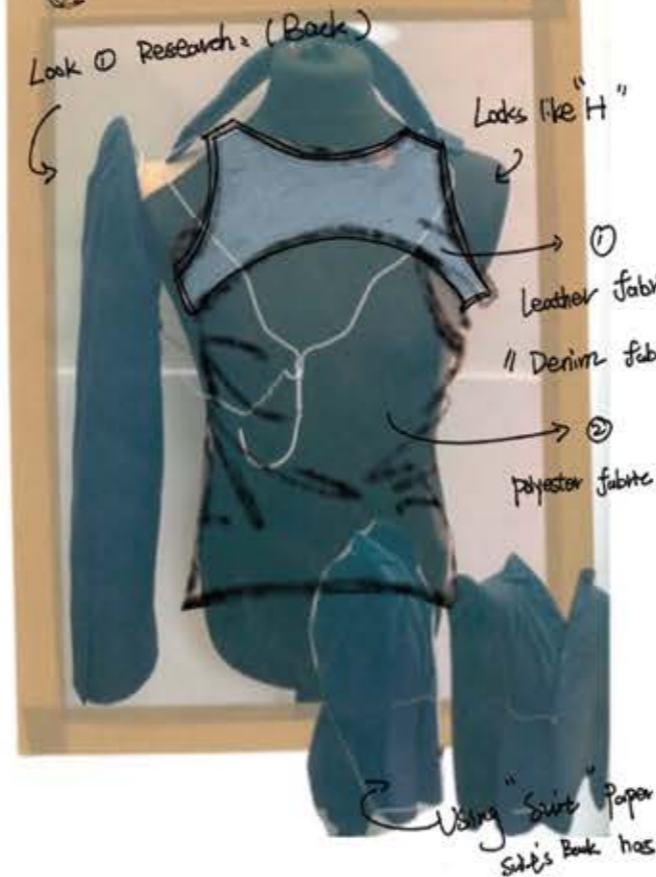
Hat Uniform



Beekeeper Hat

Look 1 Research (Back)



- Looks like "H"
- Leather fabric
- Denim fabric
- polyester fabric

Using "Swiss Paper Pattern" Set's Book has "H" shape to design.

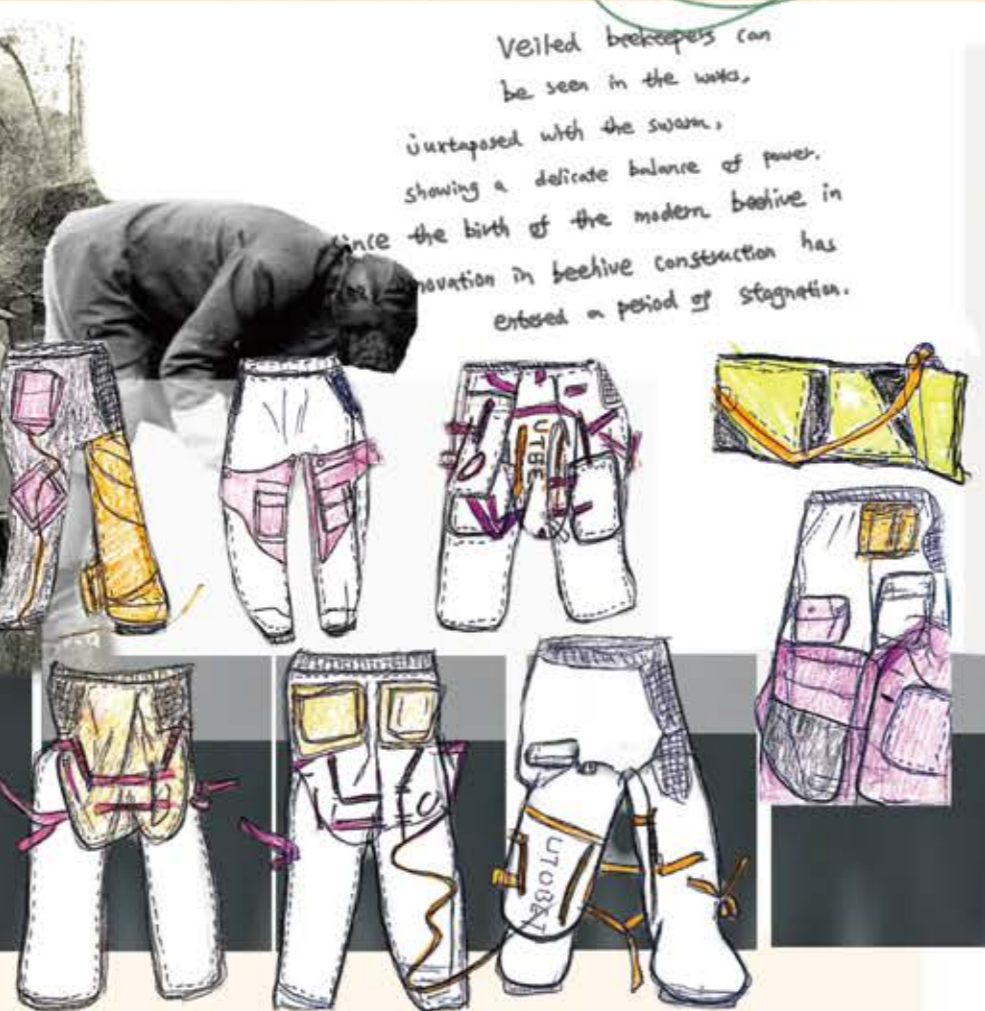


DESIGN DEVELOPMENT

Look 2.4 Draping



In form of beehives, beekeeper have abandoned buildings during from ancient times. This beekeeper - ancient - exposed - floor - structure - of - sand - mason - Sinrenty.



Veiled beekeeper can be seen in the water, juxtaposed with the swarm, showing a delicate balance of power. Since the birth of the modern beehive in innovation in beehive construction has entered a period of stagnation.

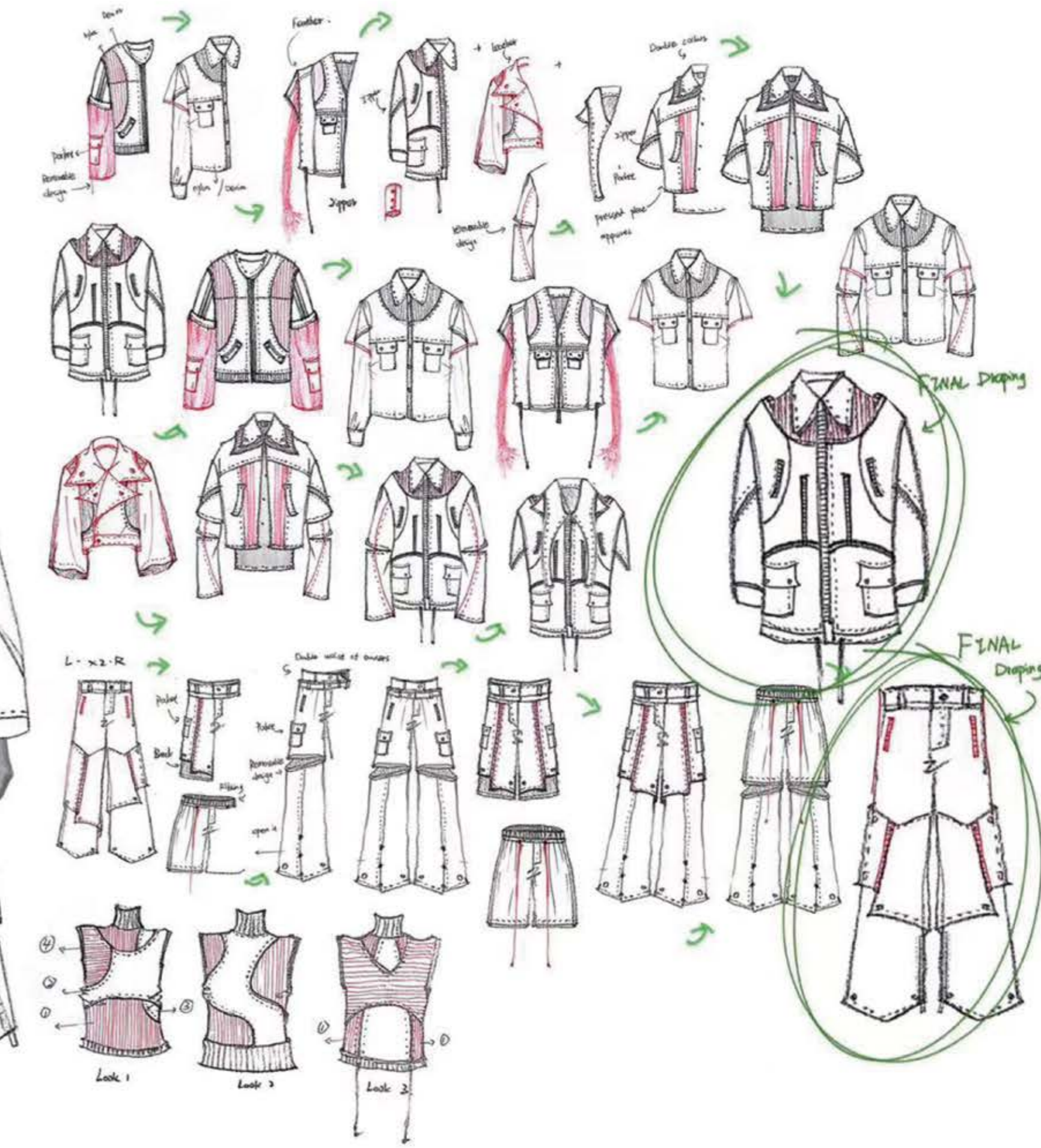
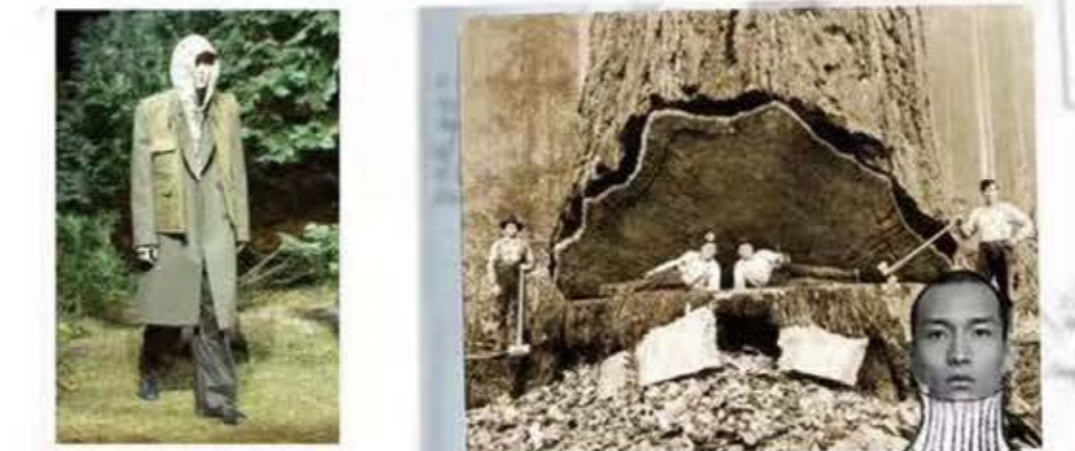


twine, belt, suit jacket and sports backpack, are superimposed on the outline of pants. Pockets appear on the top, middle and bottom of the outline experiment of pants.

The outline experiment of pants is inspired by the architectural style of honeycomb overlapping with the professional uniform of beekeeper. The functional elements of uniform pants, such as large pockets, and cleases,

LOOK5 DEVELOPMENT

My original research was about how beautiful it looks when decayed and deconstructed by nature. I started with rotten art, then twisted art. I also studied surrealist photography, which influenced the structural design of my clothes, and the tailor helped me analyze the fit of clothes on the body. More in line with nature and clothing fit degree.



Look 1
Look 2
Look 3

DESIGN DEVELOPMENT



Draping: Atmosphere and literary atmosphere, like a poem to nature.

↳ Would call it the mood of restraint.

A simple growth from nature,



© BNPS.CO.UK

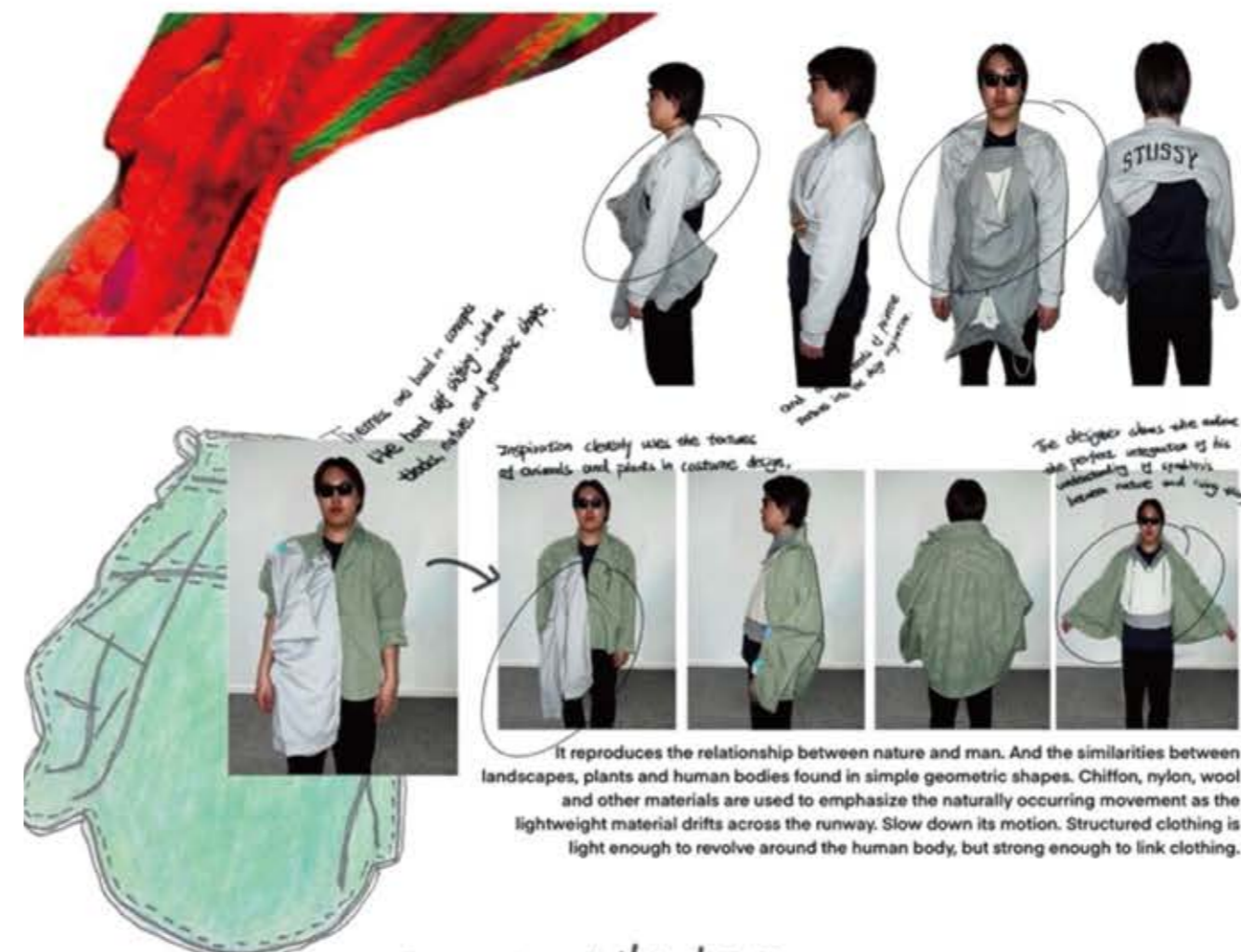


Most of the designs are inspired by the working beavers, and farming life, and the style of native and clothing.

Do not pursue complicated crafts, and fancy allocation, simple, clean, corridor design simple and do not break personality, the overall design makes people have a sense of ownership.

Referring to the uniform head cover functional design is more than decorative, the fabric is wool, nylon such functional fabric extracting design.

LOOK6 DEVELOPMENT



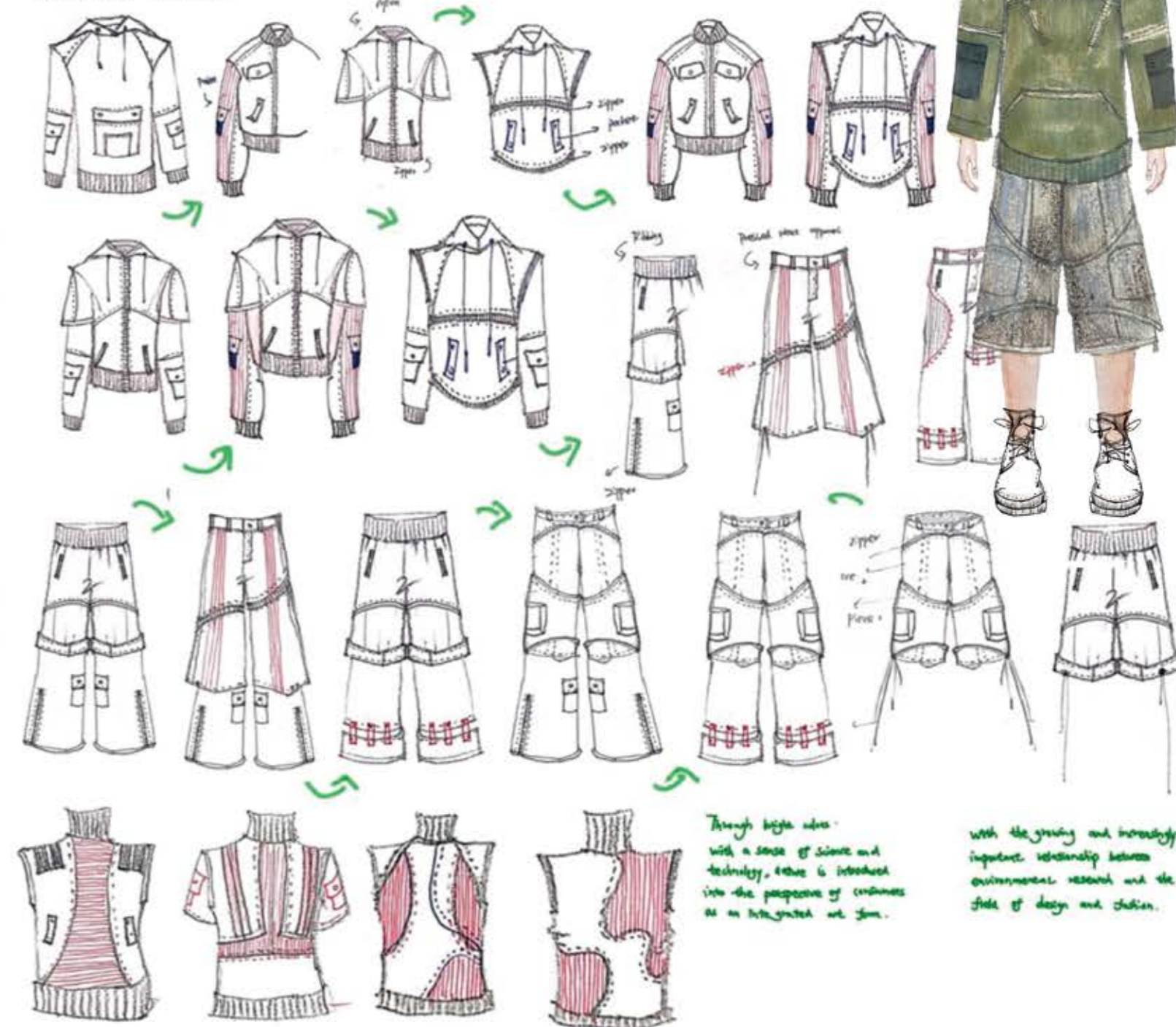
The designer does the value of perfect integration of his elements, and plans in costume design.

It reproduces the relationship between nature and man. And the similarities between landscapes, plants and human bodies found in simple geometric shapes. Chiffon, nylon, wool and other materials are used to emphasize the naturally occurring movement as the lightweight material drifts across the runway. Slow down its motion. Structured clothing is light enough to revolve around the human body, but strong enough to link clothing.

DRAPING FINAL FASHION: 26/3/2023



Re-examine the relationship between natural environment and human beings, and put more emphasis on plant thinking and perspective into fashion. Industrial and elements (technological) are integrated with nature elements.



Through light ideas with a sense of science and technology, there is introduced into the perspective of creativeness as an integrated art form.

With the growing and increasingly important relationship between environmental research and the field of design and fashion.

COLOR & FABRIC

COLOR:

"For me, fashion is a celebration, a human ritual, a celebration of life, an obsession with life, my obsession with all life, past and present: people, animals, plants, even plastic, are all part of nature."



We live in an environment where plants are often programmed to suit human needs. And when people leave, plants will gradually take over. Through surveys of beekeepers and miners, this project explores the growth patterns of plants in human ruins, and thus the process of urbanization. Trying to get people to think about our relationship with nature in today's world. How can we use the natural growth of plants to create products that enhance our relationship with nature?

Color plate:

EMBRACE NATURE:

Color palette: Australian wool 6%, Polyester fibre 64%, Rayon 25%, Spandex 5%, Terylene 100%, Nylon, 80% cotton 20% polyester, 100% cotton, 80% Cotton 20% Polyester fibre, nylon 100%, 100% cotton, 100% cotton, 100% nylon, 80% cotton 20% polyester, 100% nylon, Australian wool 6%, Polyester fibre 64%, Rayon 25%, Spandex 5%, 100% cotton.

Text: The mountains of love, embrace the trees, grow brassy, and find beauty in the layered textures of the peaks and autumn colors to inform the textures in the new collection.

Text: Most of the designs are inspired by the working beekeepers and farming life, and the style of nature and clothing. It refers to the functional design of the uniform head cover which is more than decorative. The fabric is made of wool, nylon, silk, linen, cotton and other functional fabric extraction designs.

Text: I don't think idea is something people talk about very often, but there's no denying that almost everything we wear or use once had a life in some way.

FINAL LINE-UP



FINAL LINE-UP

