

# LAUREN GIBBS

Lauren.gibbs00@gmail.com

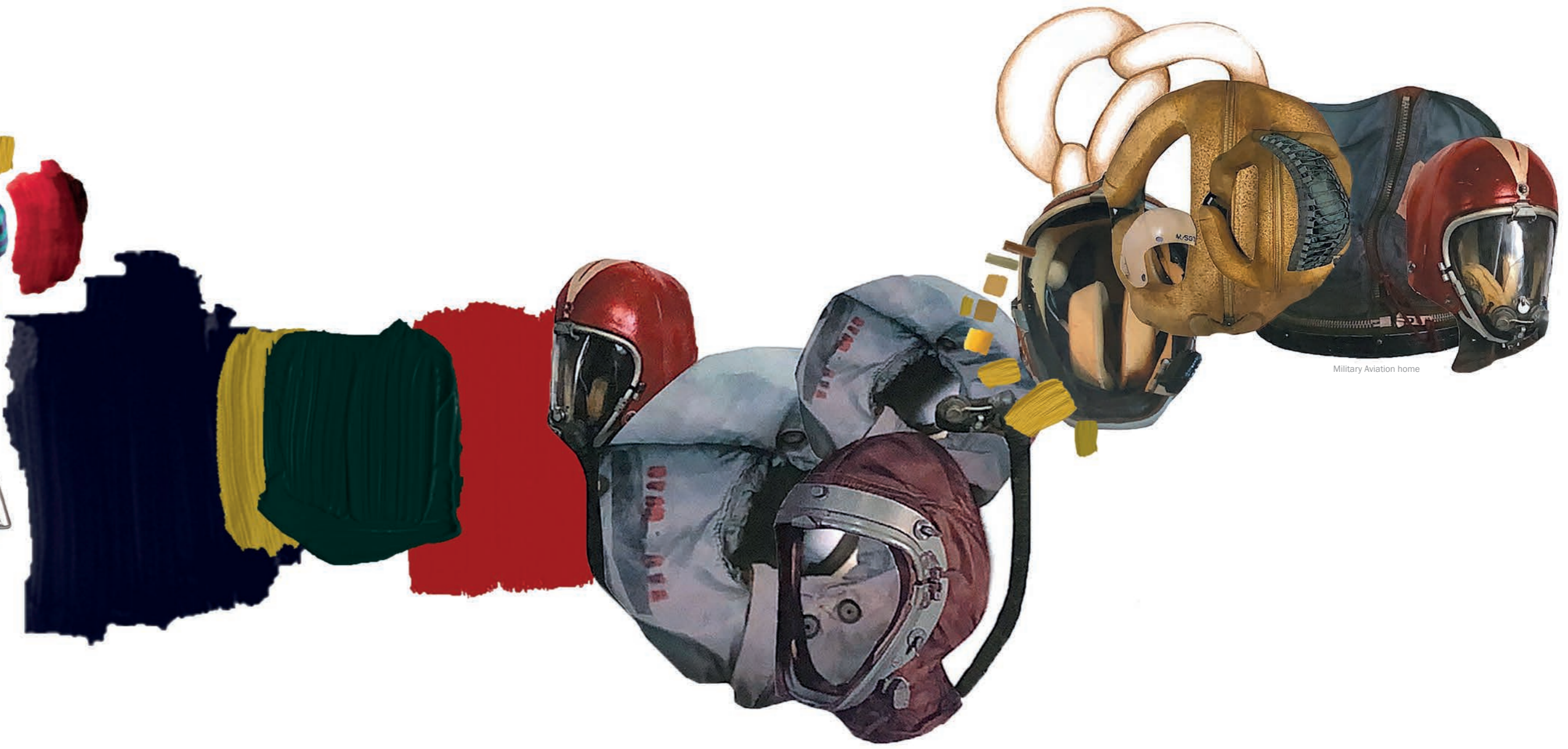
+44 7517092109

THE TRANSITION FROM  
**WORK TO PLAY**  
COLLECTION



Seattle Municipal Archives, item 6119//  
Collin's Nets//Woan Bars//Jetpacks in  
flight and science fiction

The everydayness in which objects serve us with purpose and function is the inspiration for this collection. The working person looks to objects to be able operate in their daily lives, the idea of this collection draws from the need for clothing to provide us with practicality as well as playfulness - work to play - with materials that visually explain the movements of the user through marking and creating as the person goes about their version of the everyday. The collection reveals the story of the worker, with a wearable palette of deep blue and green paired with red and detailings of mustard yellow. Using materials that reflect the worn in look with waxed cotton providing texture and durability , designed to protect against your day.



Military Aviation home



# MILITARY FLIGHT GEAR

Analysing military flight gear - deconstructing its components and reconstructing the parts - gaining design inspiration for collection

**DE-CONSTRUCTING COLLAGING BAG**

- rigging patch collar? fabric which will work over? mesh bottom
- collar fit during on/off point
- canvas material
- Large sheets collected together
- flattening out the bag - are small crumple markings with a flat garment?
- with mesh connecting to other parts of the garment
- leaving with straps attached - primary material

**MILITARY SURPLUS SHOP VISIT - PRIMARY DESIGN RESEARCH**

- dark cotton jacket - standard military issue - durable - shows the markings clearly
- high placed pocket - design - nice cotton has some markings
- practical hardware for collection?
- High symmetrical pockets - deconstructing with and using zipper about in middle
- deconstructing across the middle of the jacket
- PE-coated with zip - which leaves the zipper
- red cord with metal hardware - lining
- angled shoulder seam - adds structure & shape
- gold zippers?
- expand zipper withing and top stitching
- fail warning!

Clem Sohn in the world's first wing suit



**MUSE**  
This user holds value in community, - their workplace. Craves the ability to interchange their pieces as they go from work to play. Comfortability within climates with unpredictable weather. Not sacrificing style for practicality. Fastenings - pockets - hoods - function within wear.

Deconstructing military deadstock bag - understanding the components - how it's hardware adds function - How objects serve us and provide practical aid to the everyday we experience - Gaining knowledge for collection.

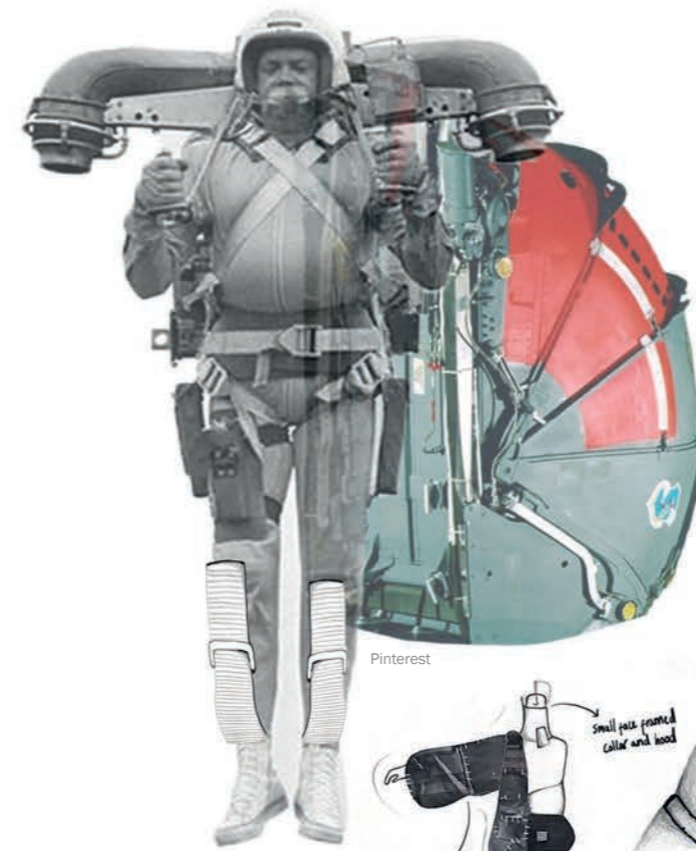
**OBJECTS - SERVING - PURPOSE - EVERYDAY FUNCTIONS**



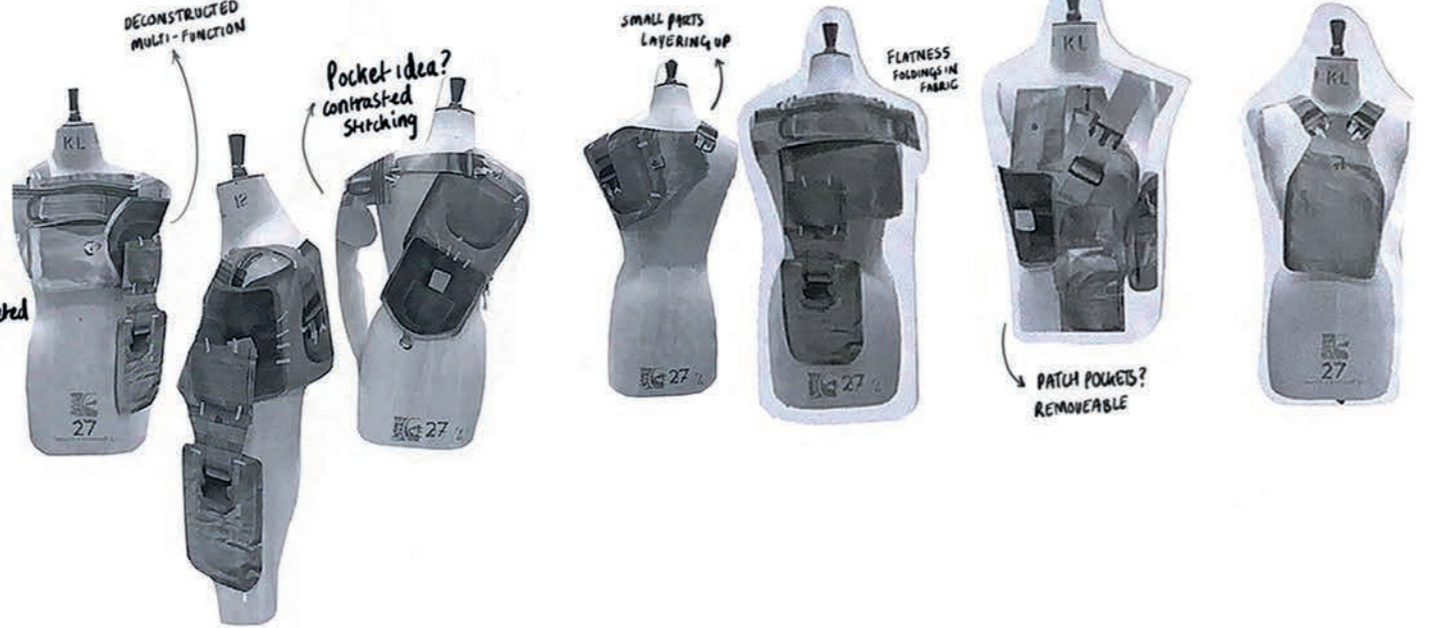
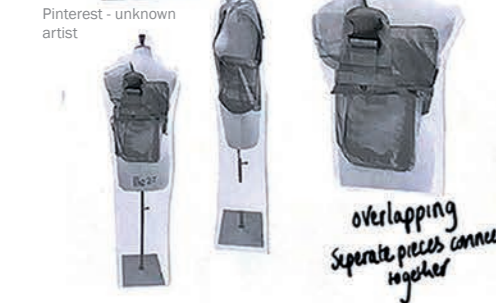
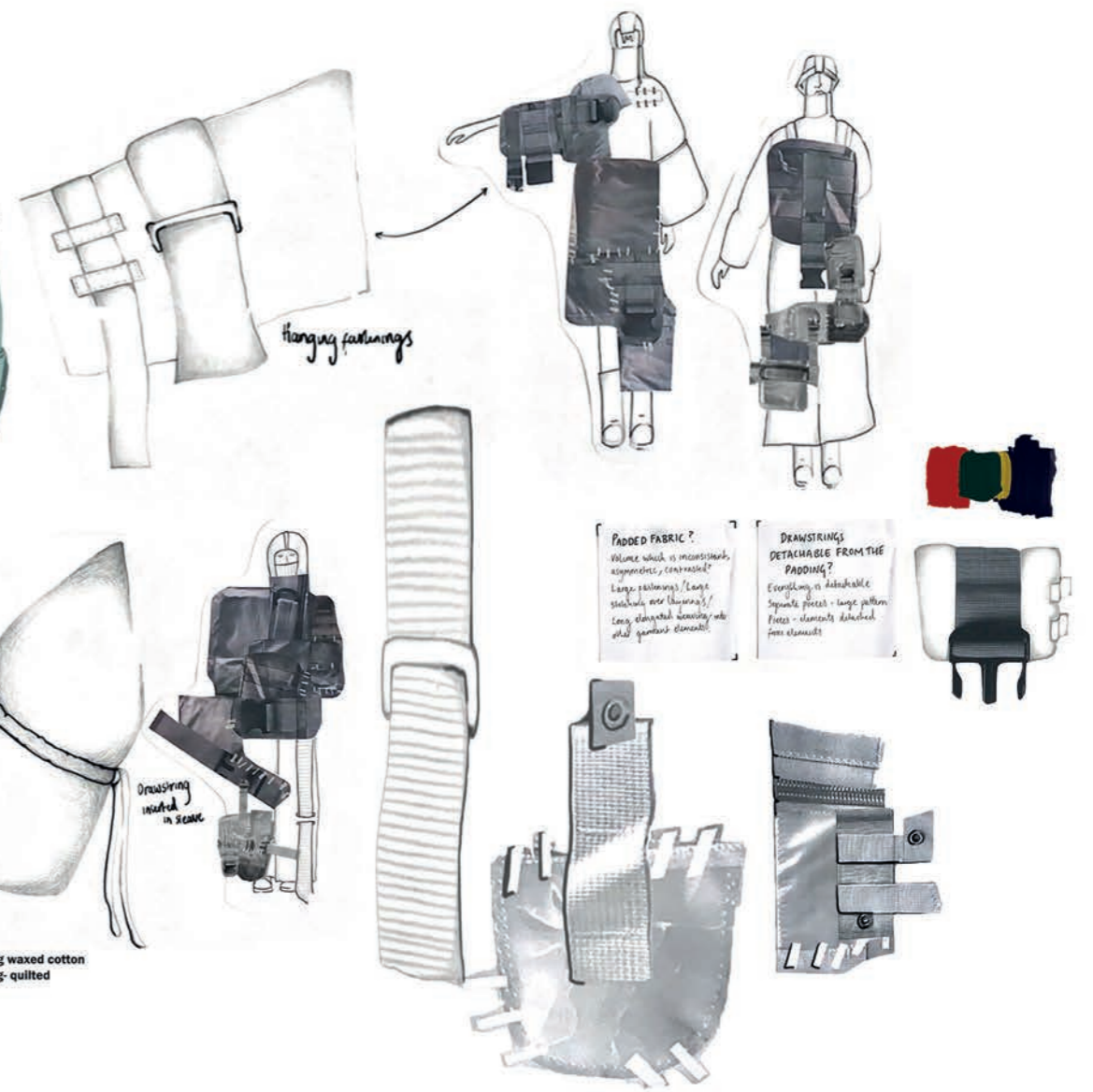
Draping the deconstructed military surplus bag on the mannequin - searching for design silhouettes and fastening ideas. Large patches, functional movement - how can I translate this when pattern cutting? Structured fabric choices - harder to drape - how can I create movement with fastenings instead of movement in the fabric?



hiroshi fujiwara and kobayashi (general research)'s collection of early vivienne



Pinterest



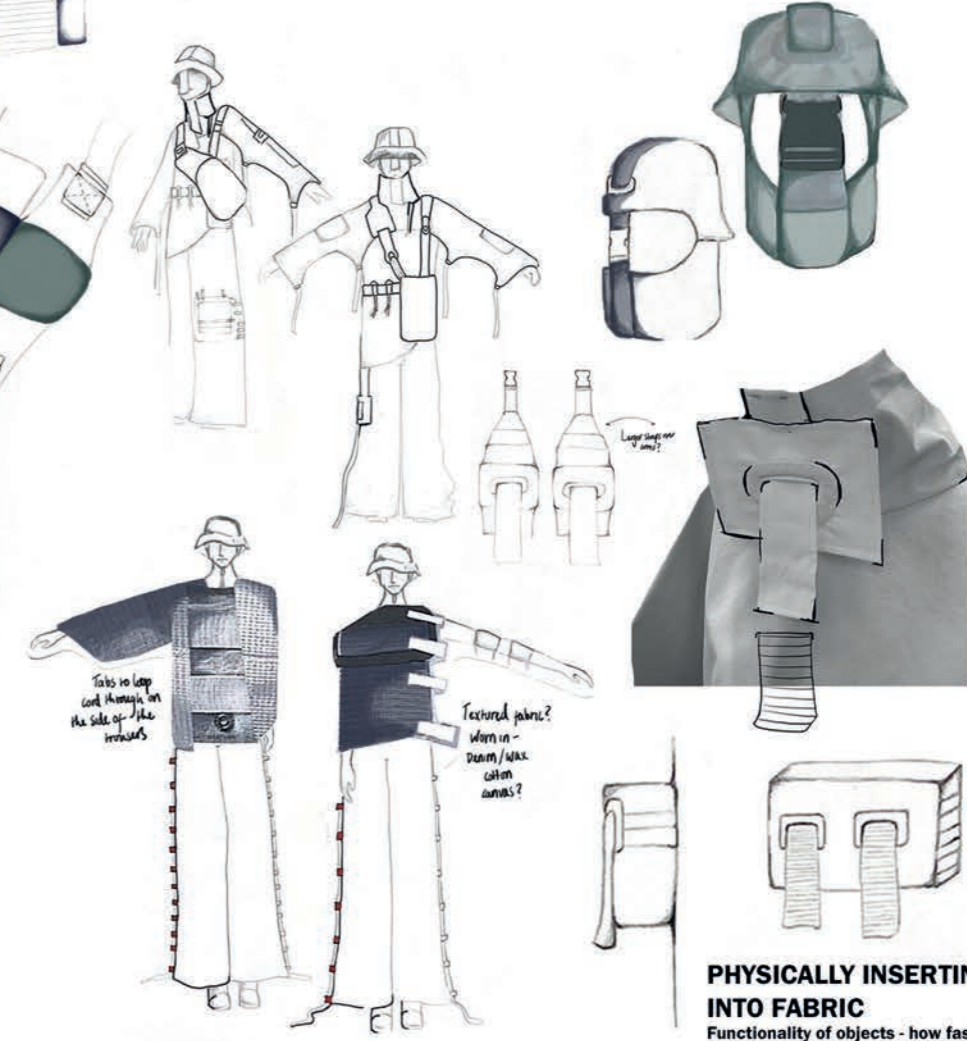
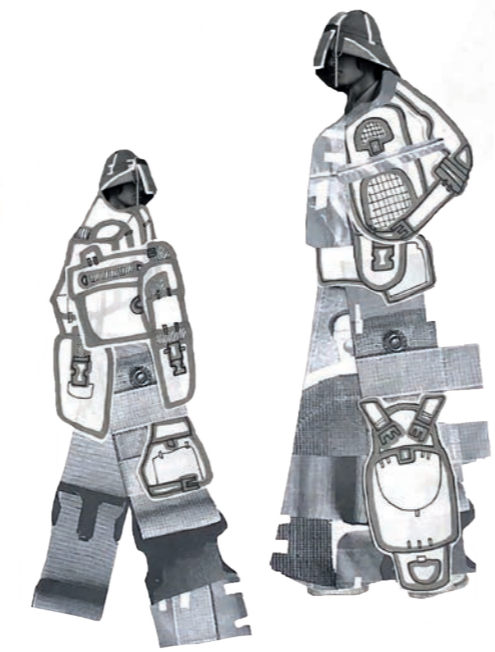
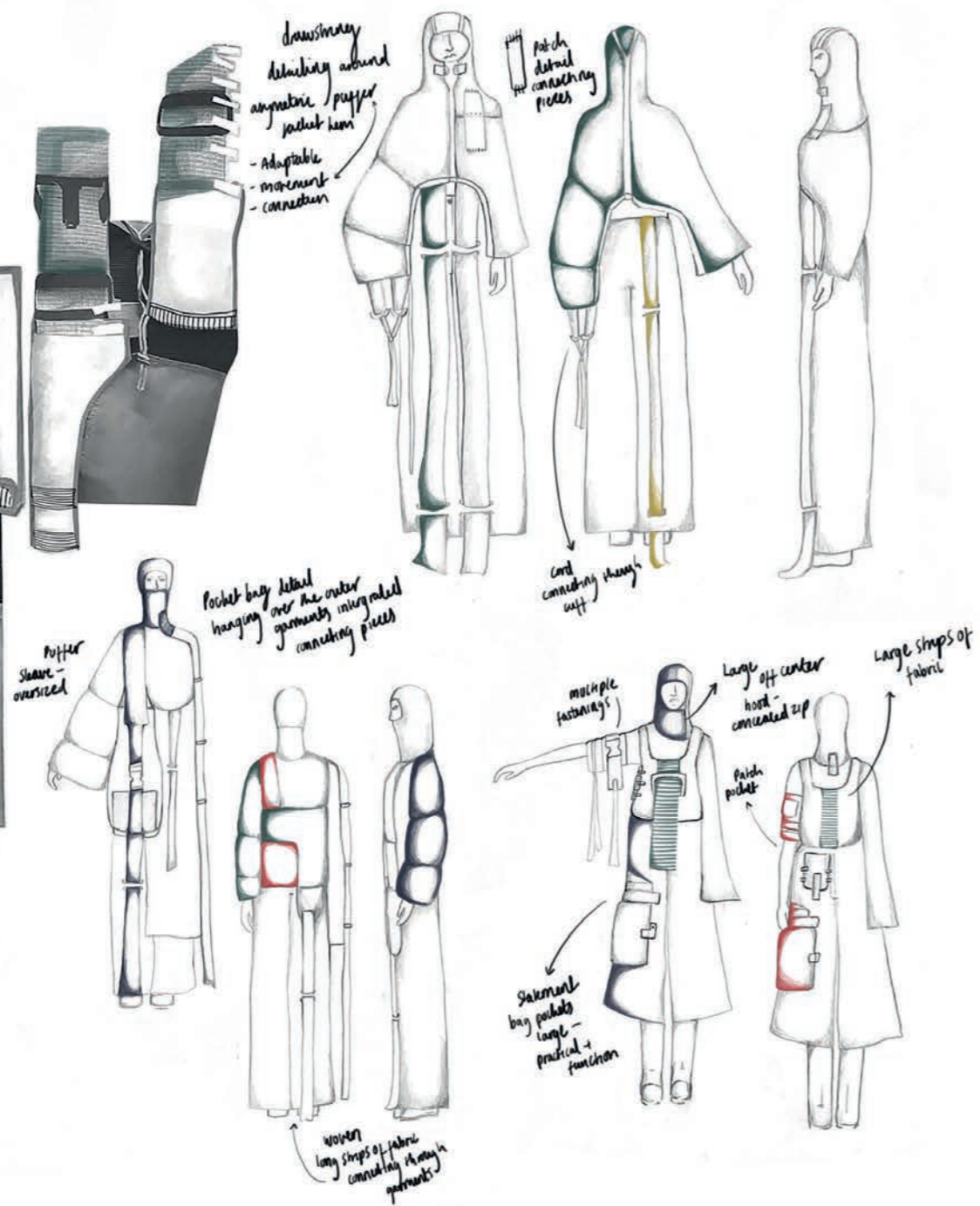
Resolved design development sample using waxed cotton with heavy mustard yellow contrast stitching - quilted 'puffer' style sample with buckle fastening

1910s Men's Working Class Clothing  
Edwardian fashion



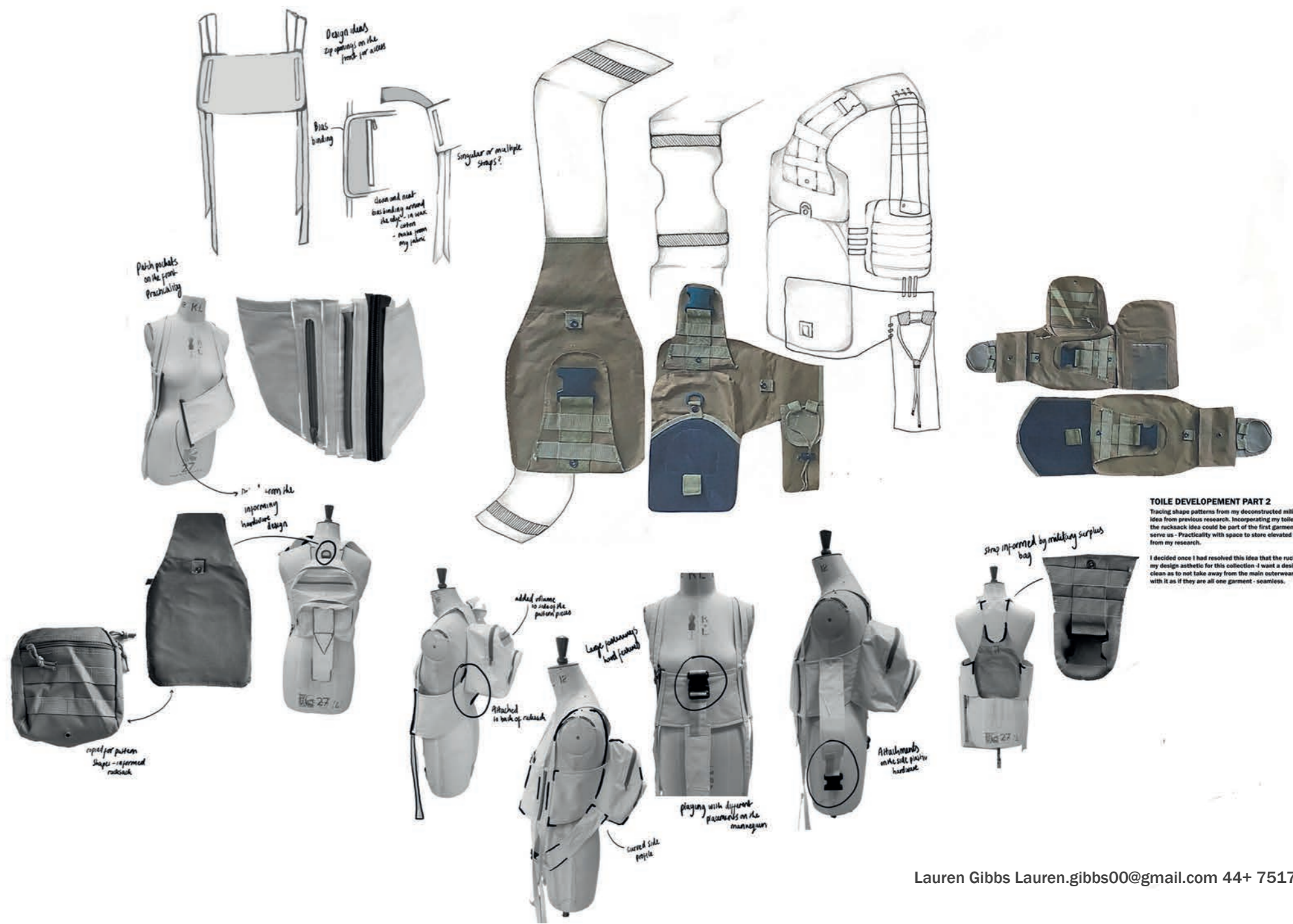
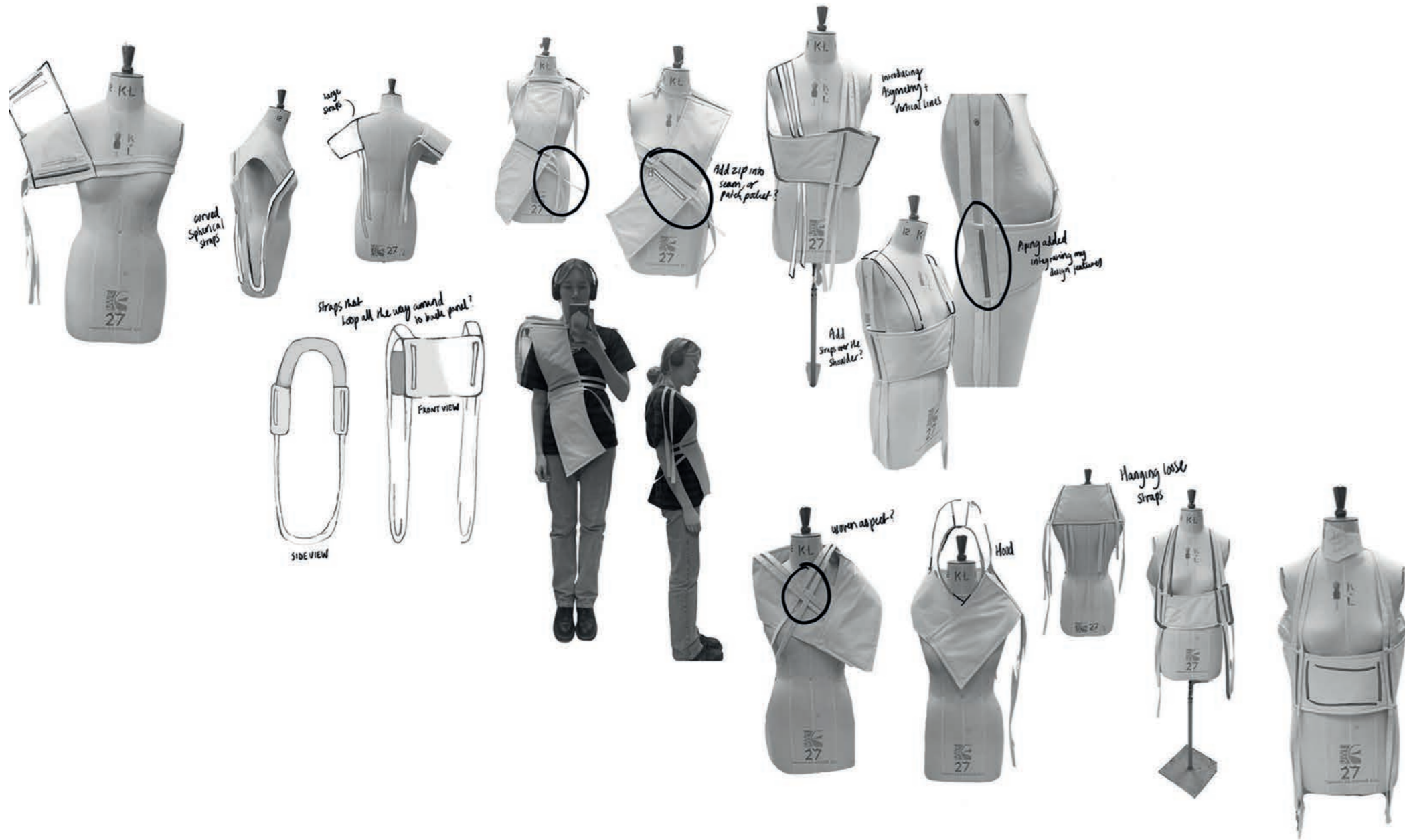
**DECONSTRUCTED AND REFORMED**

Producing ideas for fabric and layering. Scrutinising design features and contextualising them on the body. Enlarging to look at proportion and oversized features and forms on the body.



**PHYSICALLY INSERTING HARDWARE INTO FABRIC**

Functionality of objects - how fastenings allow the workers to perform in their everyday. How can introducing working objects adapt and transform clothing to suit the wearer?



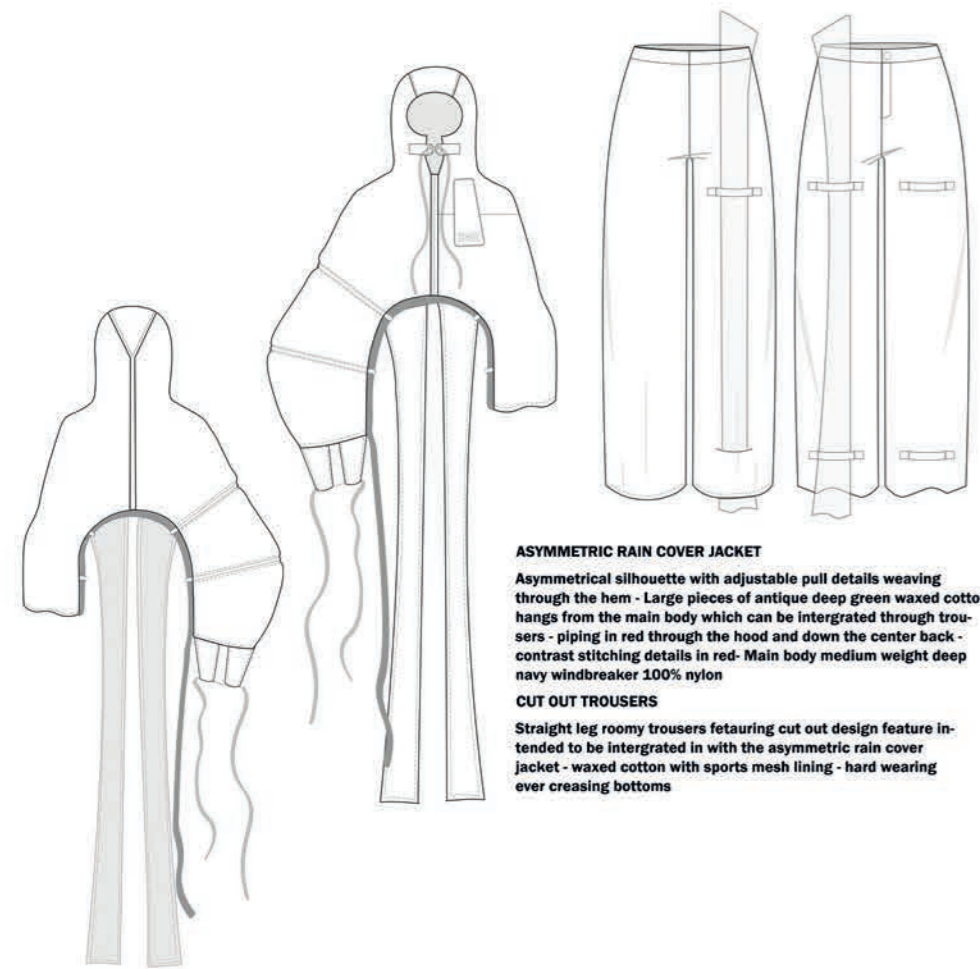
**TOILE DEVELOPEMENT PART 2**  
 Tracing shape patterns from my deconstructed military bag to resolve a design idea from previous research. Incorporating my toile from part 1 - exploring how the rucksack idea could be part of the first garment - wearable objects that serve us - Practicality with space to store elevated with hardware features taken from my research.  
 I decided once I had resolved this idea that the rucksack itself didn't align with my design aesthetic for this collection - I want a design which is more flat and clean as to not take away from the main outerwear jacket but instead blend with it as if they are all one garment - seamless.



**TOILE DEVELOPEMENT JACKET PART 1**  
 Taking patterns from a army apron to inform my jacket shape, altering the hem with a curve to resemble my ideas from my design development. Adding in flat patch pieces to the front and back as a design feature, I will cut these pieces in a different colour to the main body fabric to contrast and outline the shapes. I wanted to give movement to the sleeve, so I channelled in some paracord down the center of the sleeve pattern - taken from my fastening research - allowing the user to adjust and change the look of the garments silhouette.



**TOILE DEVELOPEMENT JACKET PART 2 - SECOND TOILE IN HEAVY CALICO**  
 Re- making my first toile in heavy weighted calico- The silhouette represents my design better, more structure around the sleeves and the collar sits up on its own. From this toile I need to make alterations to the collar - shaping more around the face and creating more distance in the neckline to add space and comfort for the user wearing it. Adding in small details like a stripe on the front patch in the same colour as the body, and mustard yellow piping across the top edge of the front patch panel - mirroring detailings of the overhang pocket detailings - tying the two garments together.

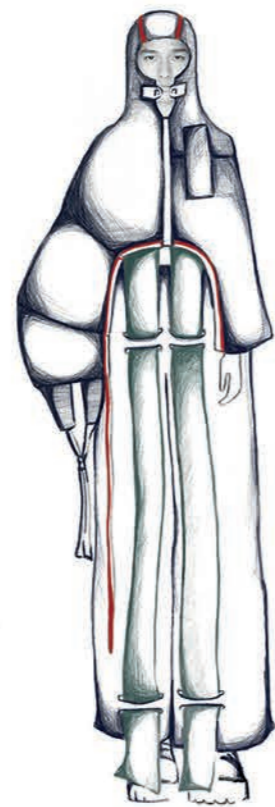


**ASYMMETRIC RAIN COVER JACKET**

Asymmetrical silhouette with adjustable pull details weaving through the hem - Large pieces of antique deep green waxed cotton hangs from the main body which can be integrated through trousers - piping in red through the hood and down the center back - contrast stitching details in red - Main body medium weight deep navy windbreaker 100% nylon

**CUT OUT TROUSERS**

Straight leg roomy trousers featuring cut out design feature intended to be integrated in with the asymmetric rain cover jacket - waxed cotton with sports mesh lining - hard wearing ever creasing bottoms

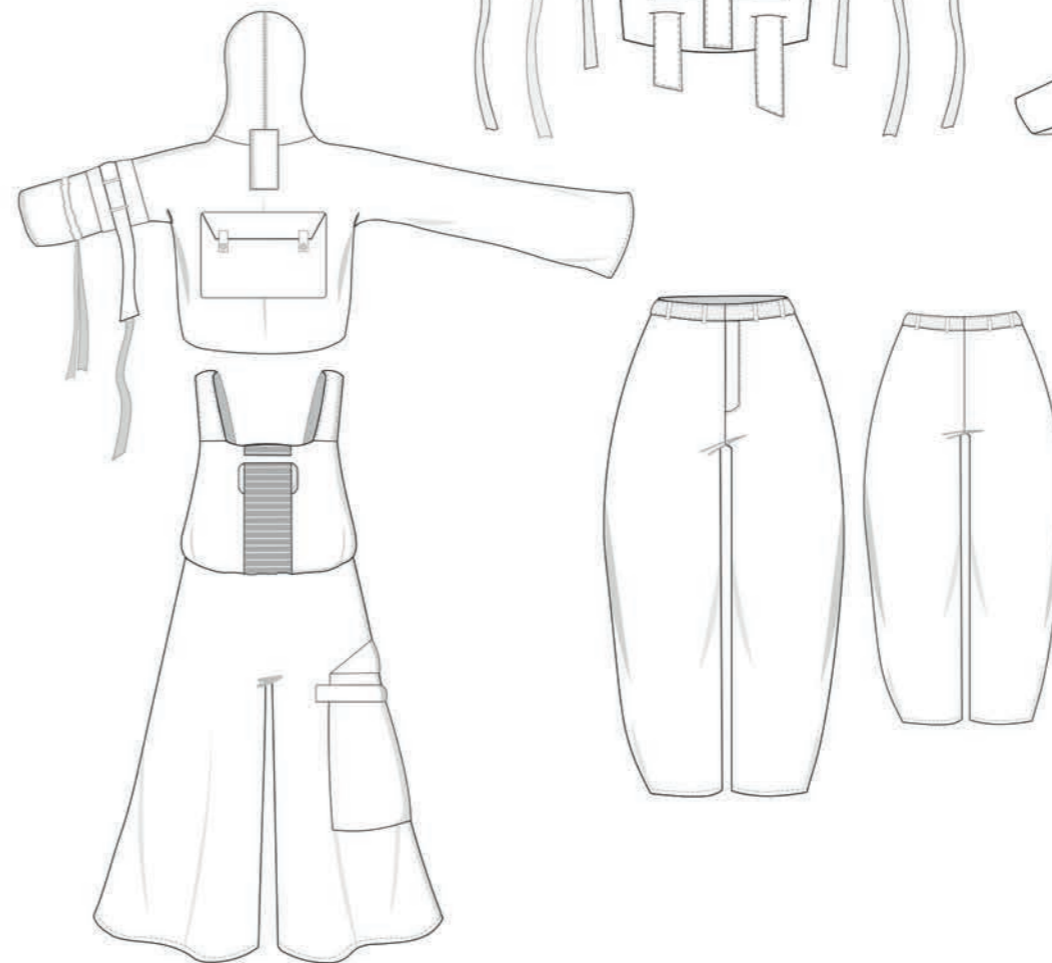
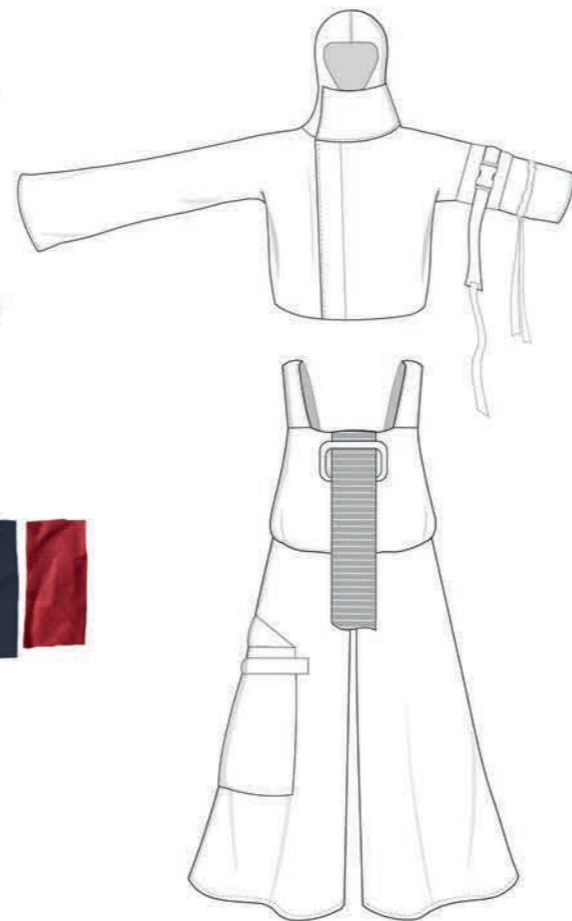


**RAIN JACKET**

Slightly fitted rain proof jacket with loose asymmetric sleeves - featuring fastening details on a cropped sleeve with buckle and tie adjustments for the user. Large built in back pocket with gold hardware popper fastening - Off center zip covered by fabric leading up to an oversized collar closure - deep navy 100% nylon windbreaker material

**ALL IN ONE RAIN JUMPSUIT**

Elasticated waistline with a baggy overall fit - pull through detail on the center with tightly quilted antique waxed cotton in deep green, woven through cut out embedded ring - Gusseted side leg pocket on leg - 100% nylon windbreaker material

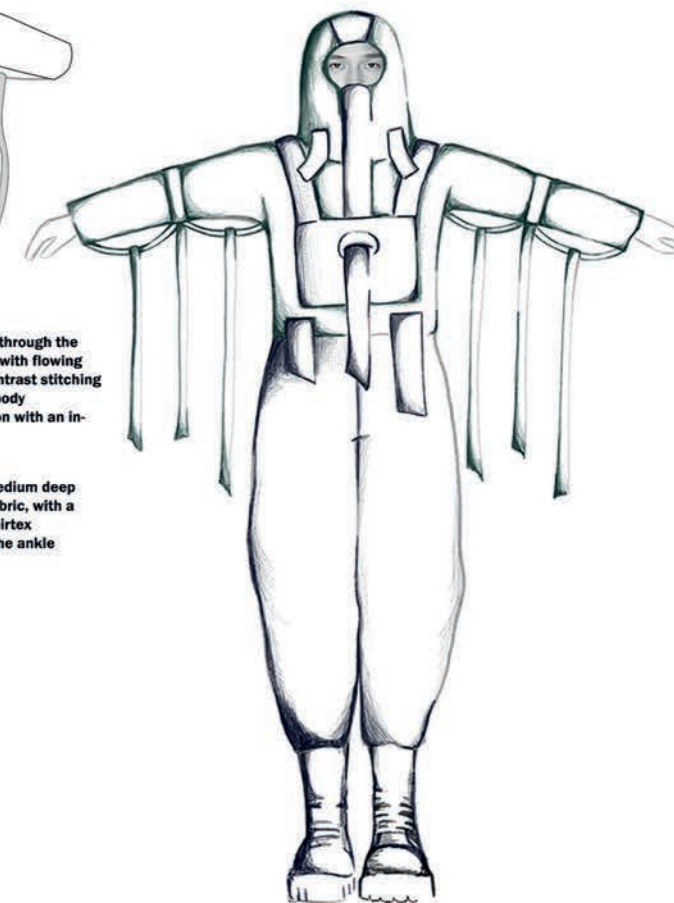


**MULTIFACETED JACKET**

Features detachable over bucket which can be woven through the main body and hood - Woven undersleeve fabric strips with flowing features highlighted when the user lifts their arms - Contrast stitching in yellow - Oversized roomy hood - slightly fitted main body - Fabrics consist of medium weight antique waxed cotton with an internal sports mesh airtex.

**BALLOON RIPSTOP TROUSERS**

Featured waxed cotton belt loops contrasted with a medium deep navy windbreaker soft woven 100% nylon main body fabric, with a peach-skin like texture on the facing side. Lined with airtex sports mesh in red - Slouchy oversized leg tapered to the ankle

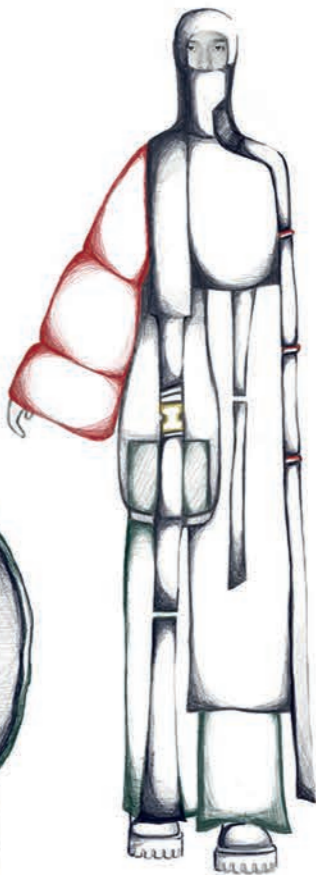
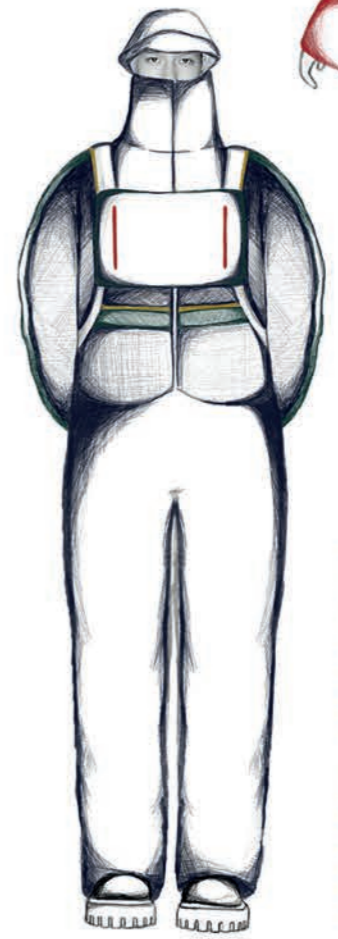
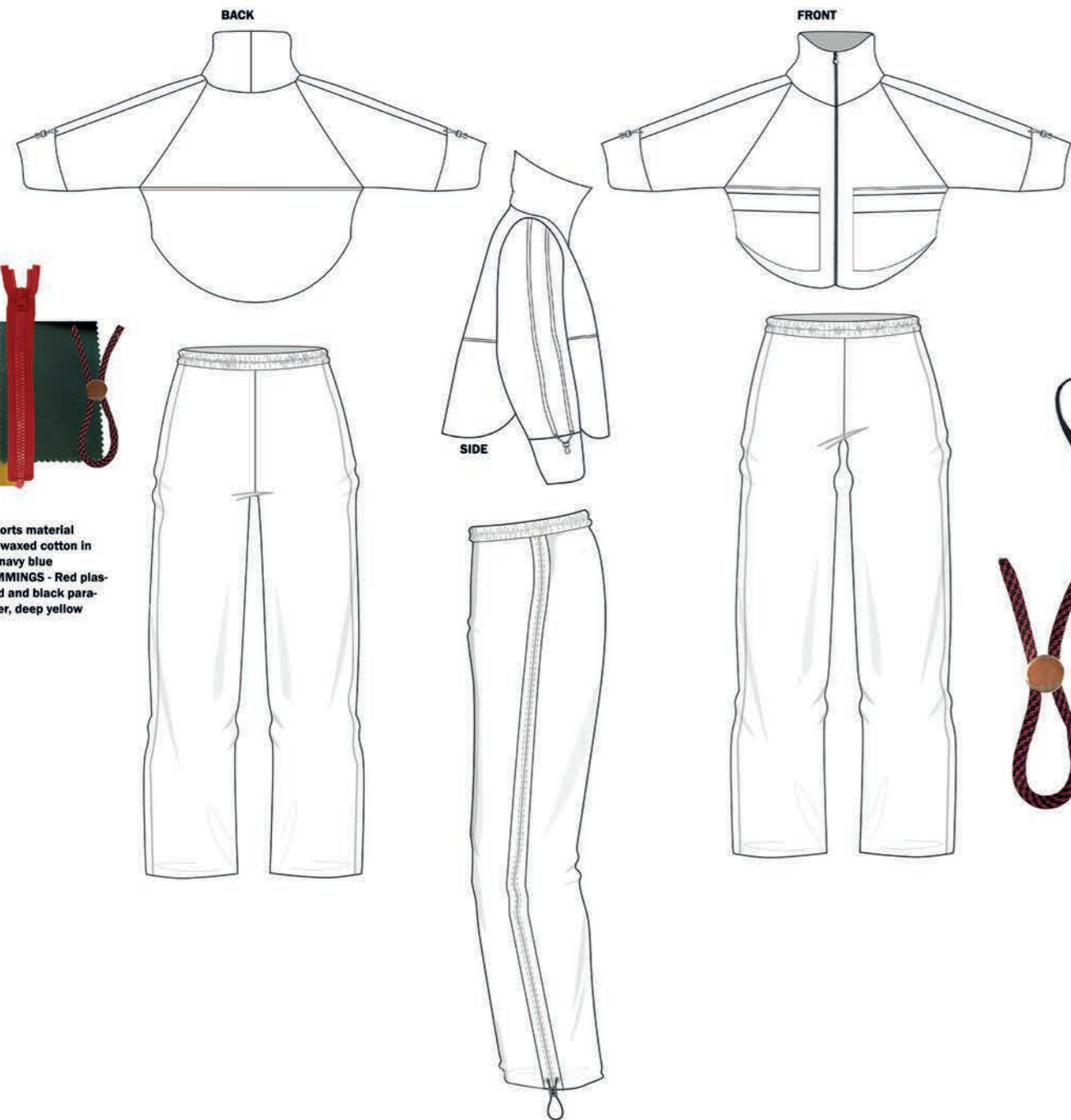






**FABRICS**

**LINING** - Red airtex sports material  
**MAIN** - Antique heavy waxed cotton in deep green and deep navy blue  
**DETAILINGS AND TRIMMINGS** - Red plastic open ended zip, red and black paracord, gold pully stopper, deep yellow



**OUTER JACKET**

Detailings consist off two gold eyelets at the end of each sleeve which allows cord to loop around locking the red cord together in a loop using a gold cord stopper.  
 Main body is a deep navy waxed cotton and the sleeve stripe deatilling is green waxed cotton, as well as the patch panels on the front and back of the jacket and cuff.  
 Mustard piping running along the top of the front and back patch panels.  
 Lining is a Air tex sports lining in bright red - lining is used got a zip pully on the center zip.

**OVERHANG POCKET**

Detailings consist of two red plastic chunky zips symmetrically placed on diagonals on the front piece of the garment - Main body on front piece and back piece are navy waxed cotton with green waxed cotton bias binding around the edge - The straps are navy waxed cotton with a mustard piping running on the outside of each strap.  
 Under of the back garment piece is air tex in bright red.  
 Under straps are navy waxed cotton.

# NOT THE EVERYDAY WEAR

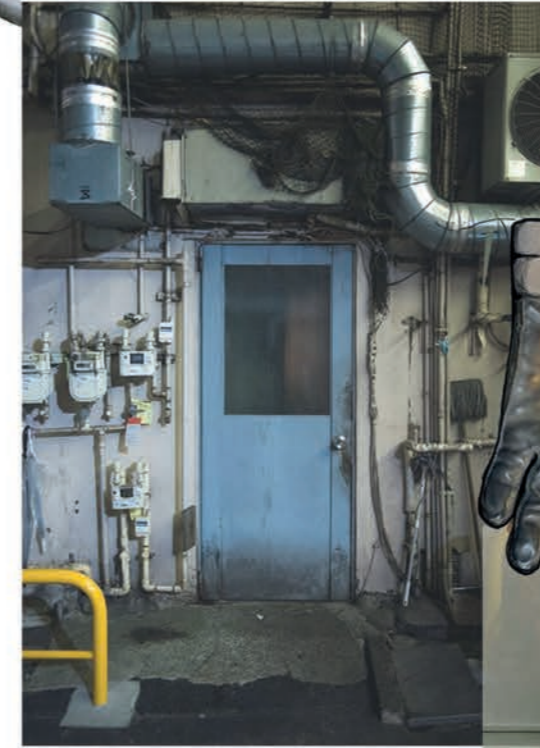
Photographer Matsuda Tadao's portraits of Japanese construction workers



Pinterest unkown photographer



Observing clothing worn in the everyday routines of working people. Working with us and connecting us to one another - The reflections of hard work through the clothing we wear and the tools we carry - Our pieces of clothing are able to hold time within there apearance, reflecting the movements and history of the people who owned them.



THE DOORS OF SAN JUAN BAUTISTA //Pinterest



The collection is aimed to be wearable for many age ranges, voiced through many characters and ages who have a need or want for workwear style pieces - Wear that is long lasting and will work with them against colder climates with practicality and function - the outsider explorer - Elevated outerwear designed to work with and serve the individual.

Photographer Matsuda Tadao's portraits of Japanese construction workers

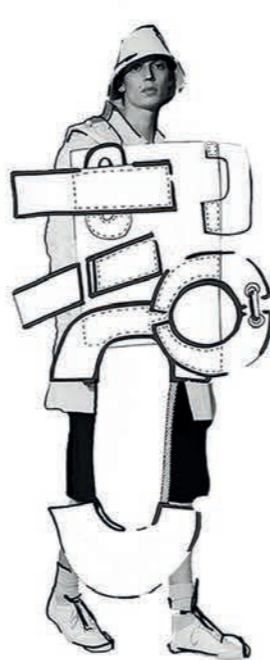
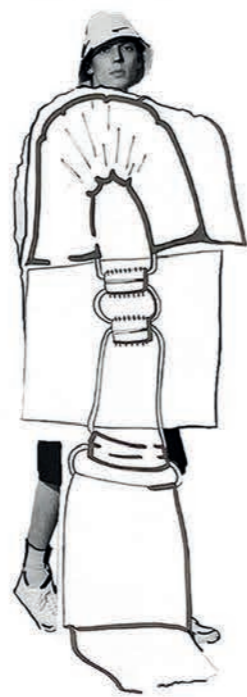
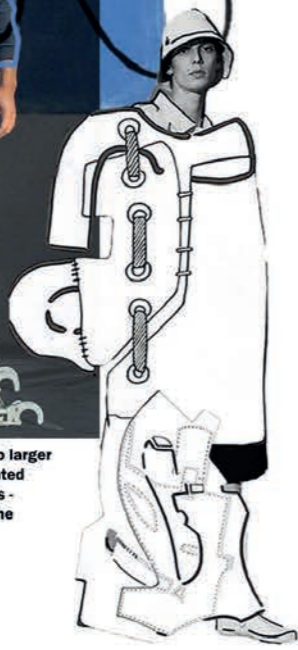
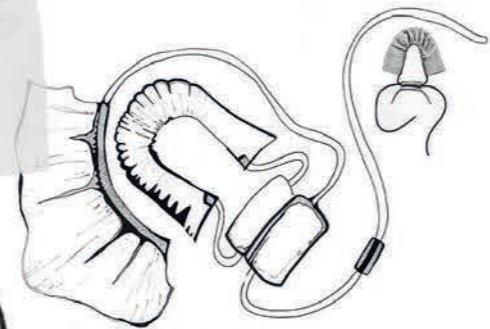
Large pieces of fabric - protective shields - clothing as a barrier to the elements of the workplace



Arbejder in asbestkledning/worker wearing protective gear



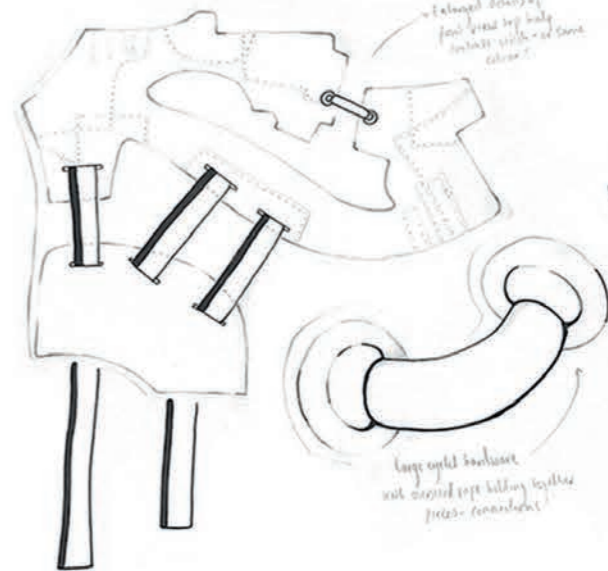
Translating sampling shapes into larger forms across the form. Exaggerated lines and asymmetric silhouettes - large folds of fabric protecting the worker



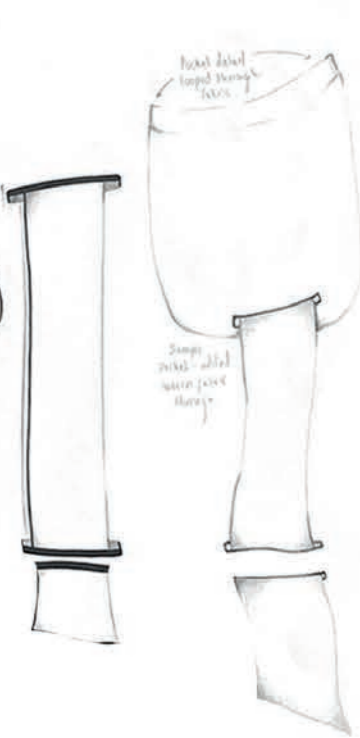
RE-ABSTRACTING FROM MY MANNEQUIN EXPERIMENTATIONS ON THE FORM-DEVELOPING IDEAS FOR COLLECTION

A look back at life on the estate in 1990

Looking into creating a flat from - a piece that is large and drapes over the body - negative space - oversized pattern pieces joining and connecting



Extended shoulder from front top hole contains width of same colour!  
Large right shoulder and second top holding together pieces connected!



Small label taped through 100%

Small label taped through 100%

WORKERS - WEAR - WEAR THAT WORKS



COTTON CANVAS SLATE Japanese cotton canvas is a lovely high quality. It is densely woven with a medium texture and a stiff handle. A mid to heavy weight canvas 100% cotton



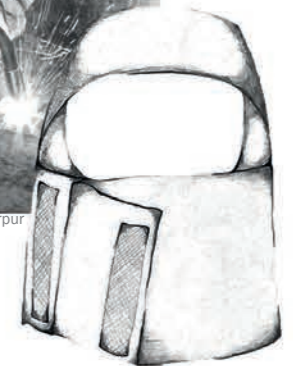
SEAL GREY CANVAS heavy cotton canvas with a washed and slightly brushed finish 100% cotton



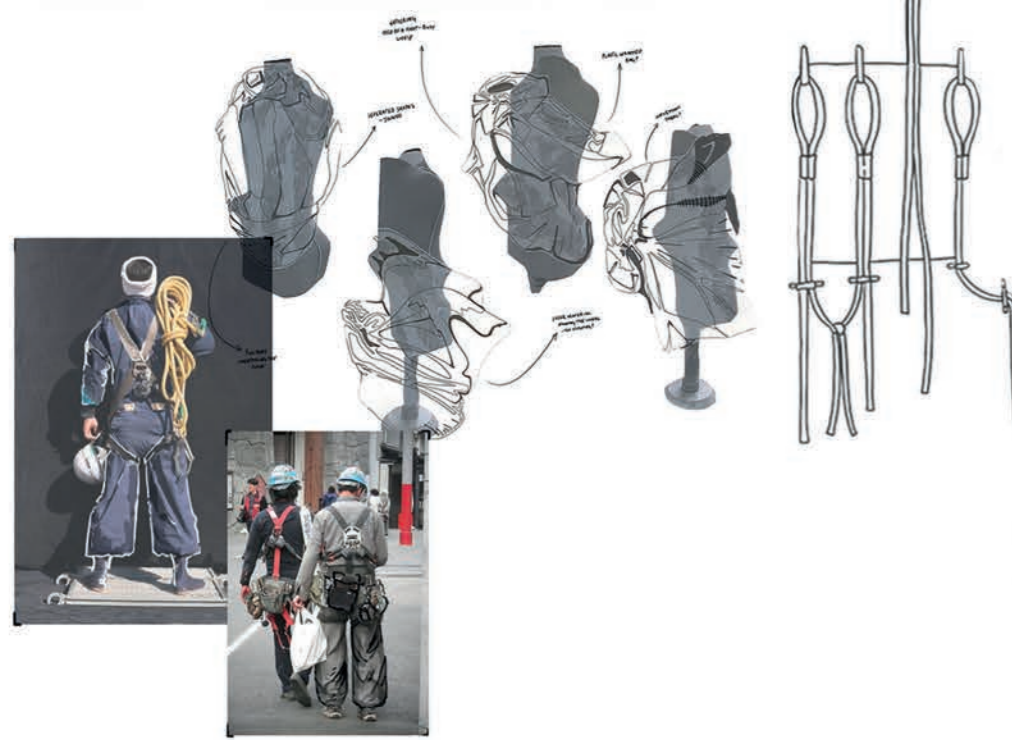
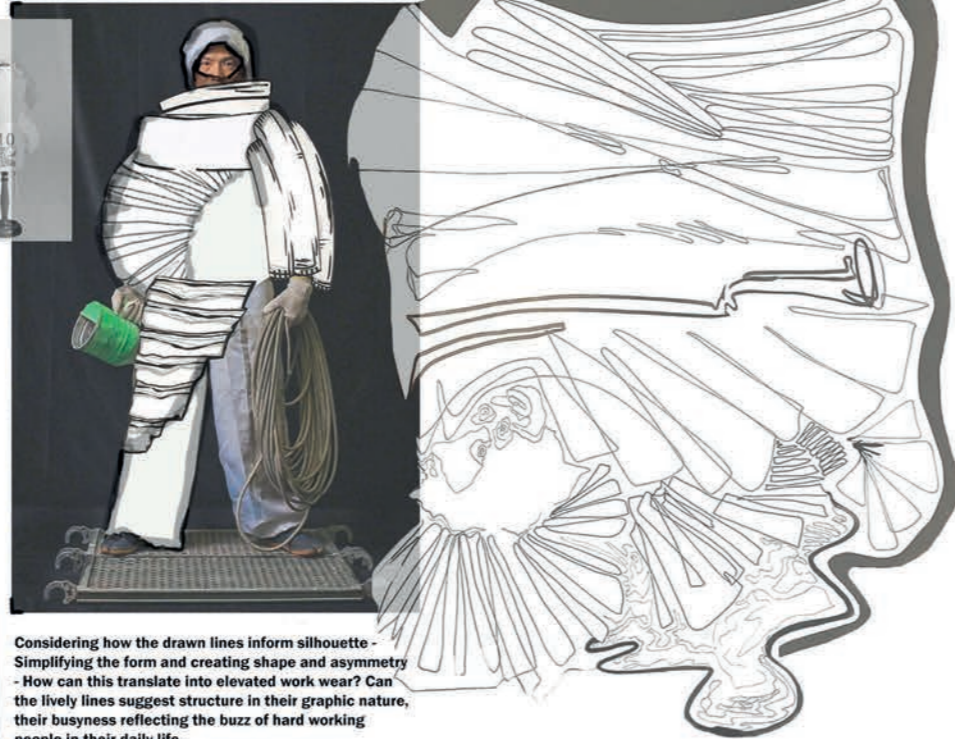
11.50Z MILK BOTTLE DENIM heavy duty cotton denim in cream 100% cotton



Aziz Welding and steel works - Mirpur



REWORKING MY DRAPING - COMBINING THEM AND UNDERSTANDING THE LIVELINESS OF THE LINES.  
 OBJECTS SERVING WORKERS - PROTECTION - SERVICE - ATTACHED

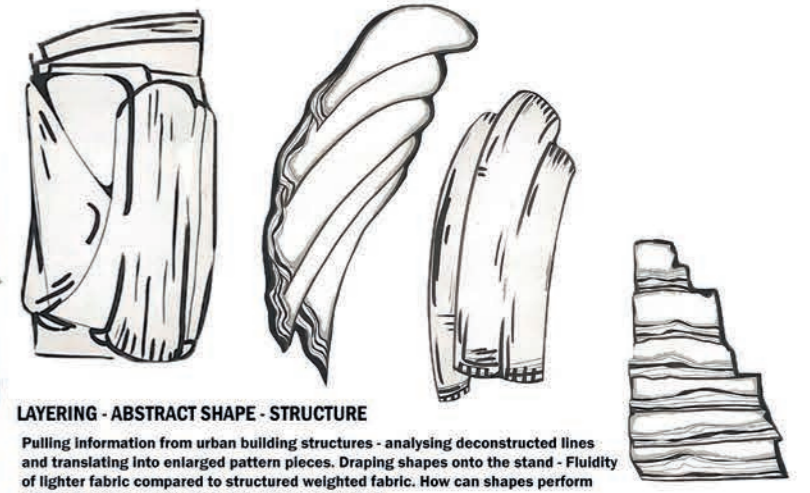


Considering how the drawn lines inform silhouette -  
 Simplifying the form and creating shape and asymmetry -  
 How can this translate into elevated work wear? Can the lively lines suggest structure in their graphic nature, their busyness reflecting the buzz of hard working people in their daily life.  
 Sturdy workwear with multiple layers - shapes combining onto the body - taking moments from my draping and simplifying down the character of line and it's proportion.

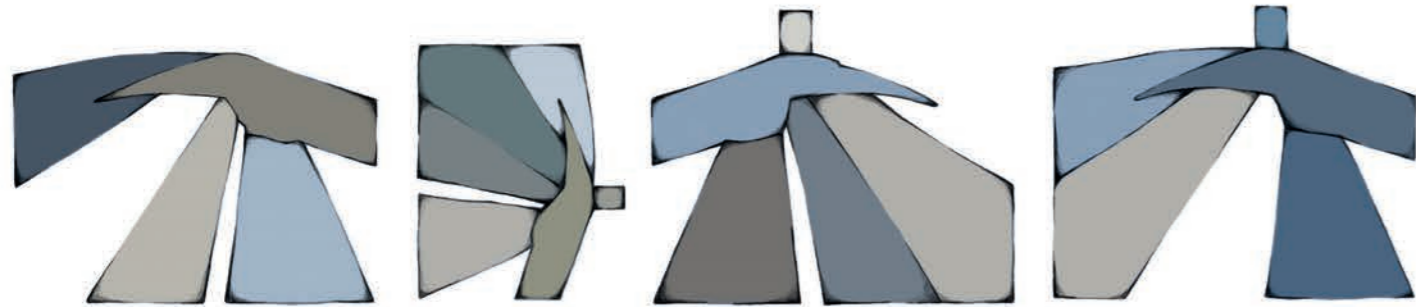


David Diehl photographer - constructor

David Diehl photographer - constructor



LAYERING - ABSTRACT SHAPE - STRUCTURE  
 Pulling information from urban building structures - analysing deconstructed lines and translating into enlarged pattern pieces. Draping shapes onto the stand - Fluidity of lighter fabric compared to structured weighted fabric. How can shapes perform differently when using alternative design methods?



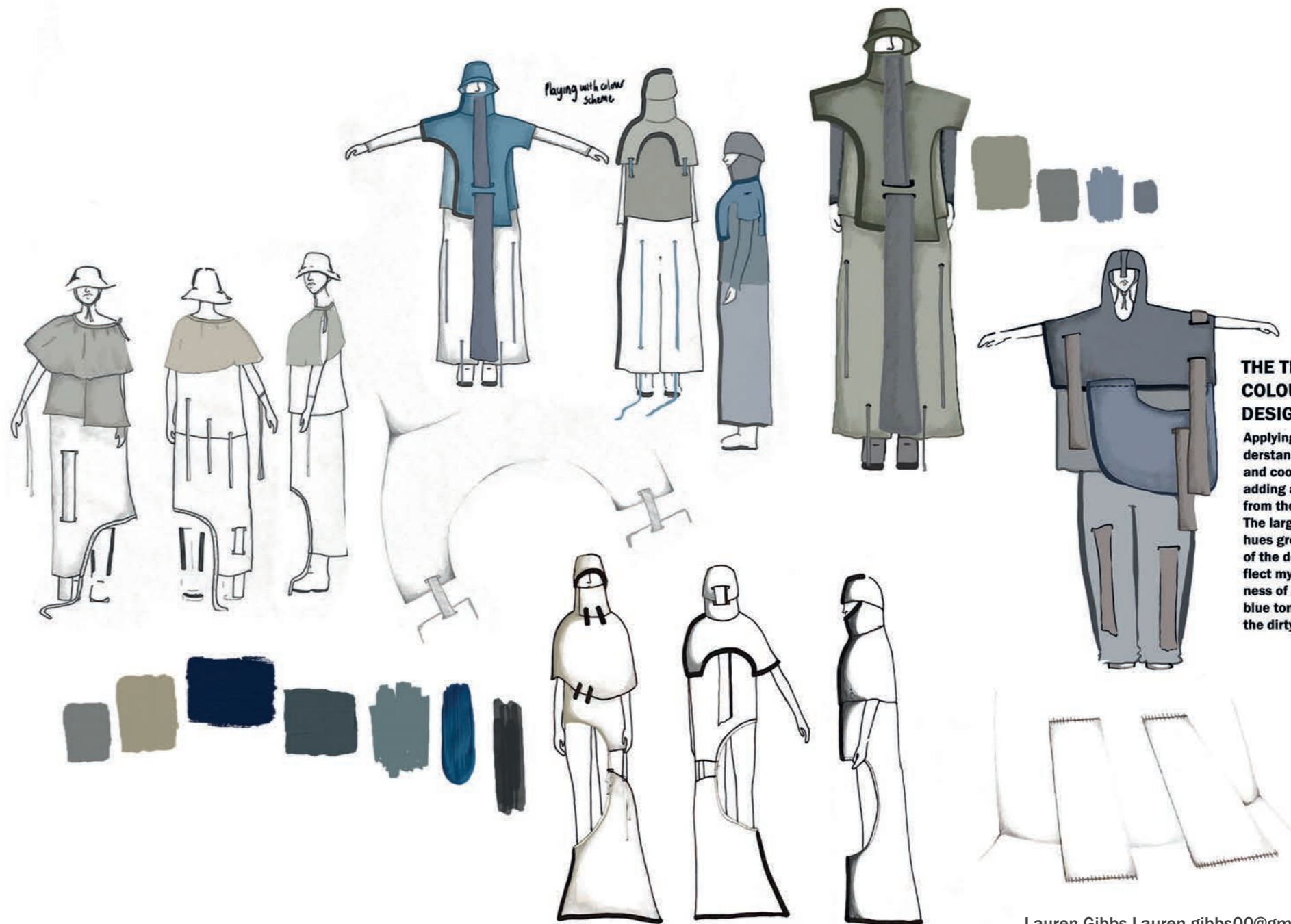
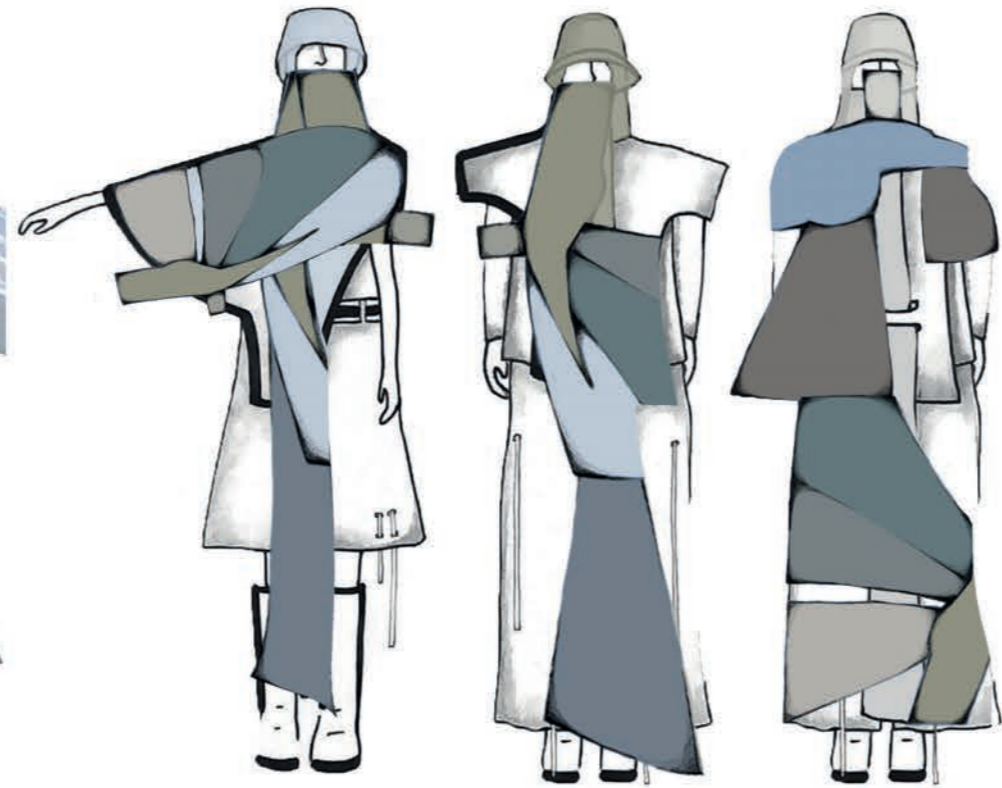
Pinterest - unknown artist



### COLOUR STORY

Translating hues of colour into large abstracted shapes on the form. Distributing the colour with different proportions and tonal values.

An in depth discovery of the man made works of construction, the image shows the wears of the elements on the metal works - rust - structure and interlocking lines.



### THE TRANSLATION OF COLOUR ACROSS DESIGN WORK

Applying the colour story - understanding how the neutrals and cool tones work together - adding and subtracting colours from the story. The larger proportions of blue hues greatly changes the nature of the designs, the neutrals reflect my research into the grittiness of outside workers - the blue tones are used to highlight the dirty shades.



Design development for The Workers Wear In collection  
 Establishing forms  
 Value in workwear  
 Protection of the user  
 Clothing that serves the user

Dr Edward Wilson - History photos

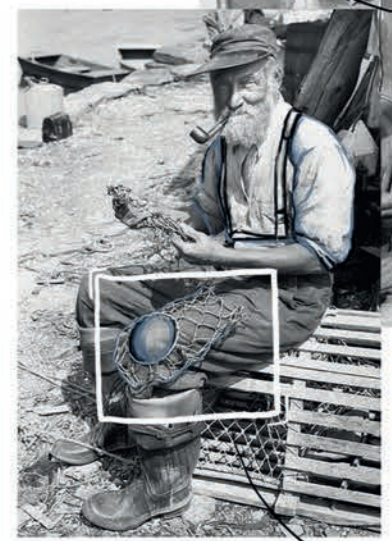
Lauren Gibbs Lauren.gibbs00@gmail.com 44+ 7517092109

Historic life vest



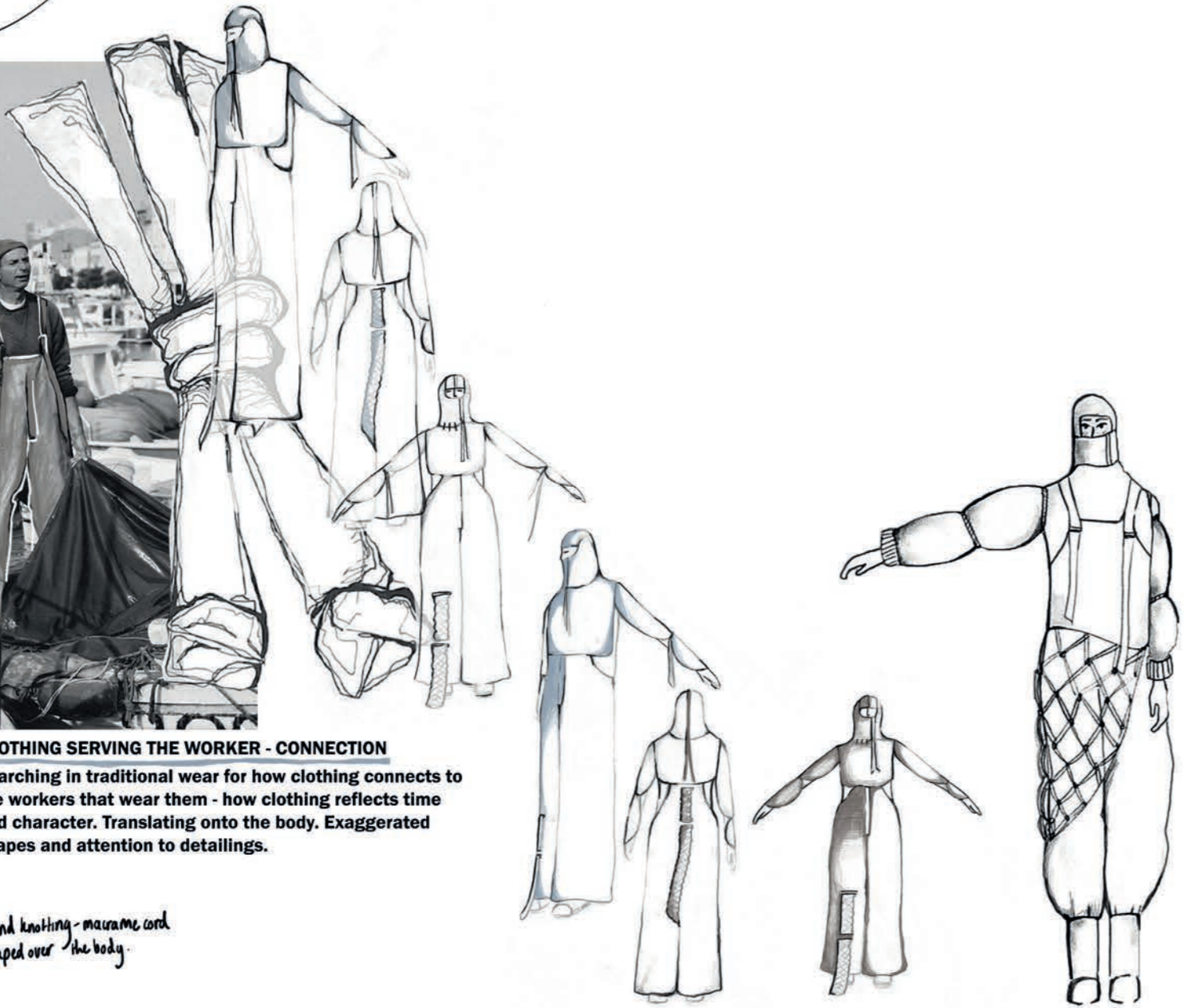
connections with straps  
volume - shape - simple

oversized layered  
waterproof fabric  
fastenings

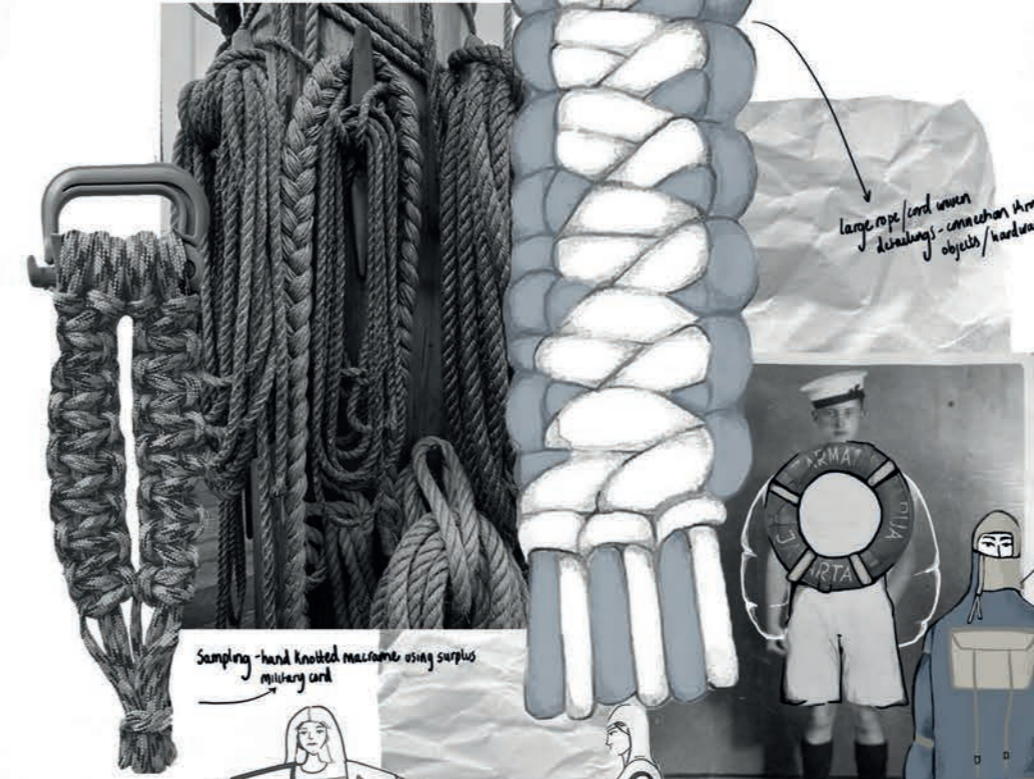


**CLOTHING SERVING THE WORKER - CONNECTION**  
Searching in traditional wear for how clothing connects to the workers that wear them - how clothing reflects time and character. Translating onto the body. Exaggerated shapes and attention to detailings.

hand knotting - macrame cord  
draped over the body.

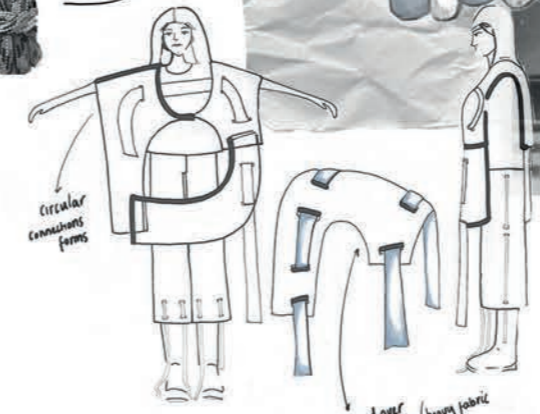


Pinterest- fishing ropes



large rope / cord union  
drawings - connection thru  
objects / hardware

Sampling - hand knotted macrame using surplus  
military cord



Circular  
connections  
forms

draped over  
the body / heavy fabric

Vintage sailor images



Tailored shirts - workers wear  
Combining baggy forms with  
structure

Quilted joined with  
hardware

