

*Lauren Waller*

*University of the West of England - Fashion Textiles*

*laurenwaller1234@hotmail.com*

*07432786860*

*Let Them*

*Wear Cake*

*For this project, I looked at childhood nostalgia and comfort.*

*One of the biggest comfort foods is cake. As a child, cake was saved for special occasions like birthday parties which made it all the more thrilling. It's exciting colourful icing and magnificent stacked tiers make it many of our fondest memories.*

*From studying the shapes, colours and textures of icing, I have created a textile collection using digital embroidery to show the wonder and excitement of being a child. I have combined this with a muted colour palette to integrate girlhood with coming-of-age.*

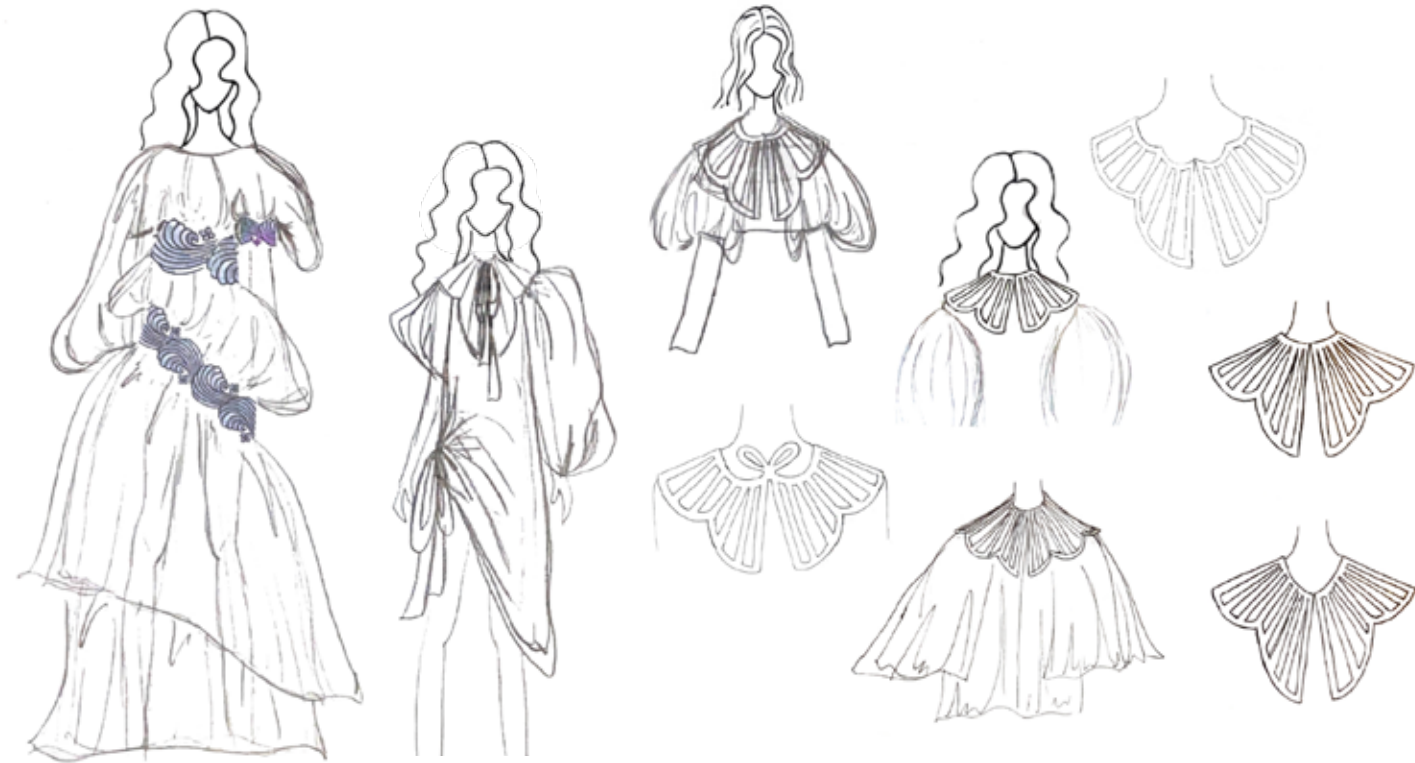
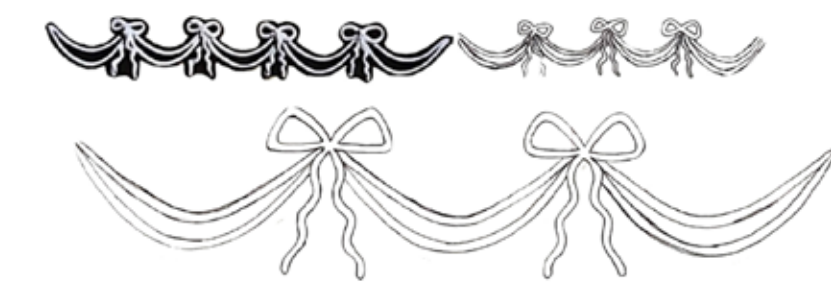
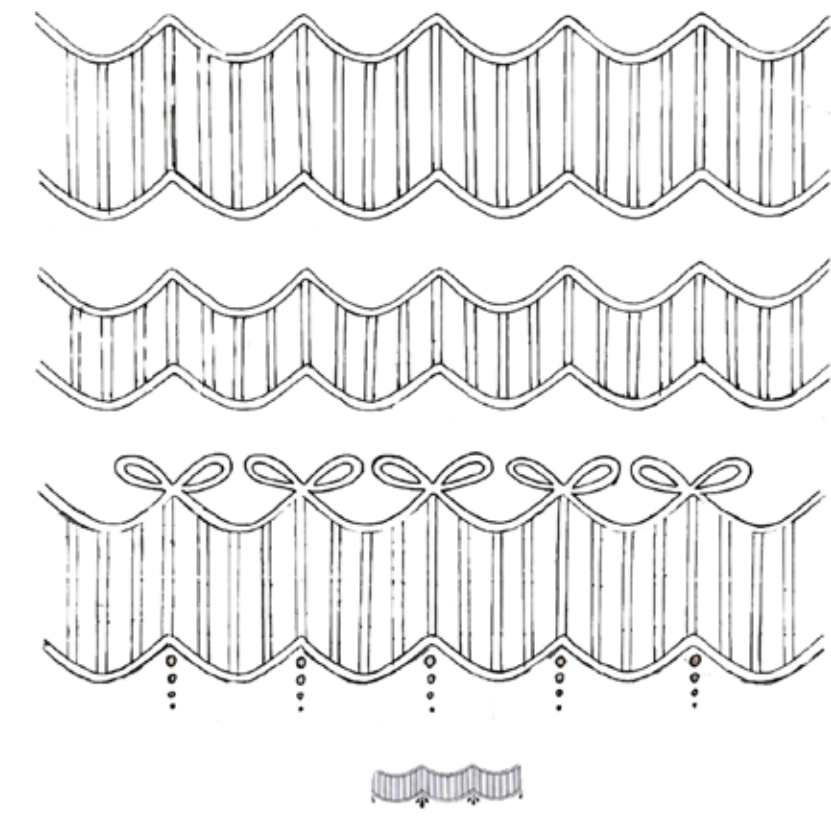
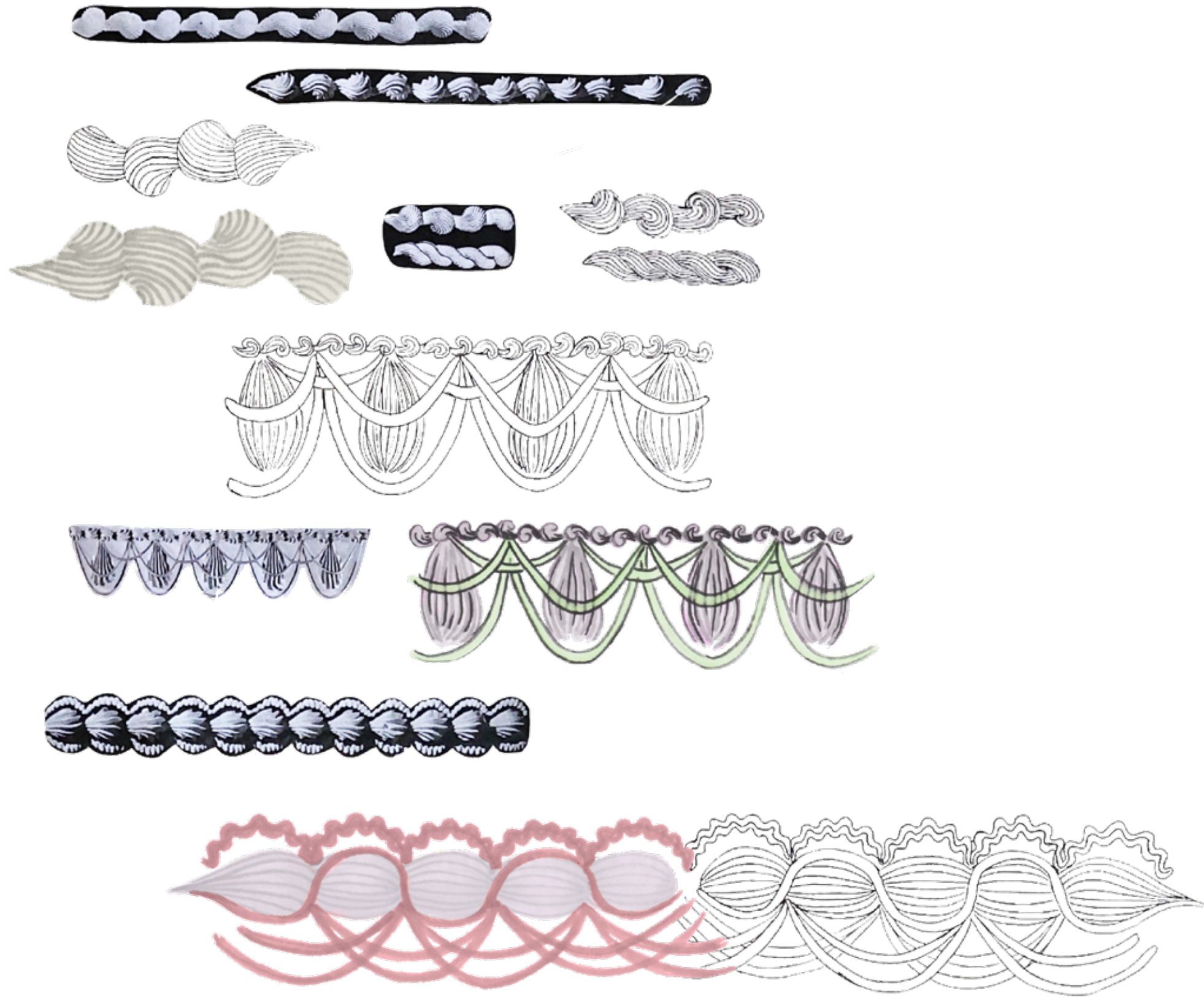




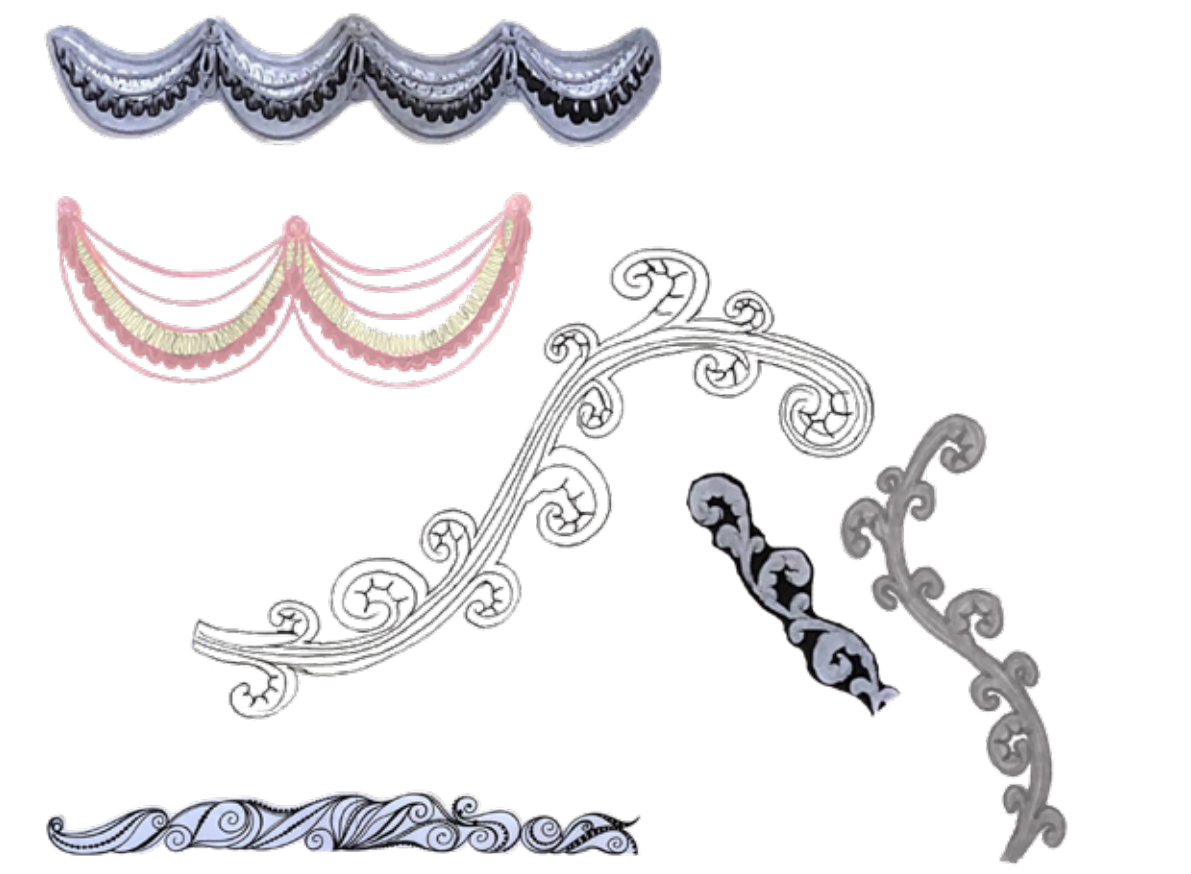
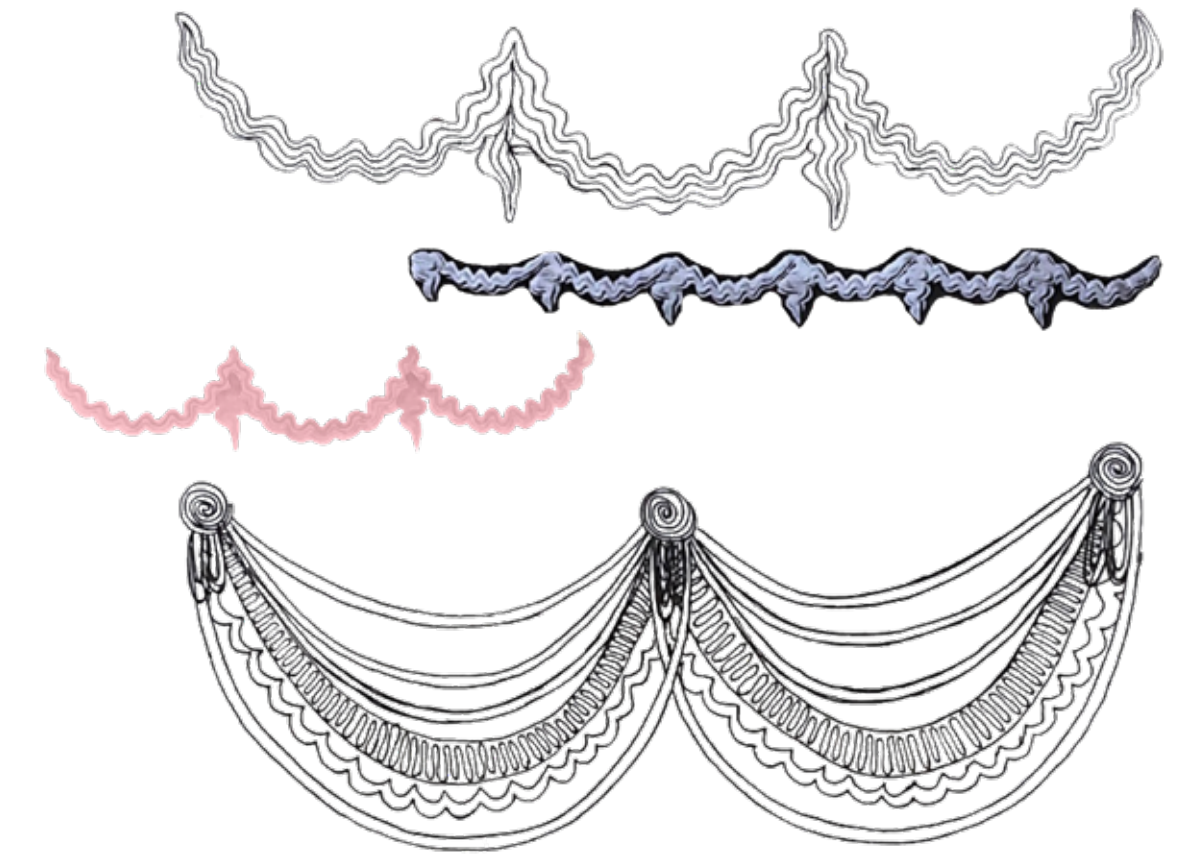


Looking at different books for inspiration on icing designs (also shown over next two spreads)  
These included:

- The Pictorial Encyclopedia of Modern Cake Decorating - Mabel and Norman
- Cake Chic - Peggy Porschen
- Cake Decorating and Sugarcraft - Evelyn Walker



Embroidered collar:  
  
 Stitch type - Satin  
 Satin count - 1  
 Auto split - On  
 Stitch spacing - 0.35mm  
 Underlay - Edge run and Tatami  
 Width - Experimenting between 10mm - 50mm  
 Thread - Sulky 100% viscose  
  
 Fabrics:  
  
 Cotton organdie







*Experimenting with different ways of attaching the ribbon, including machine embroidering over the top with wavy lines and a flower motif from one of my icing embroidery designs, and creating eyelets from embroidery using builder so the ribbon can be threaded through.*



*Icing embroidery samples:*

*Top - on wool, using split satin stitch, 0.35mm stitch spacing, satin count 1.*

*Middle - same design as top, but showing how it would look on pleated cotton organdie, using builder and un-split satin stitch to add dimension and make more 3d looking.*

*Bottom right - icing scallop embroidery on wool using builder, satin stitch, 0.35mm stitch spacing, satin count 1.*

*Bottom left - same icing scallop embroidery on wool, using extra thick builder.*

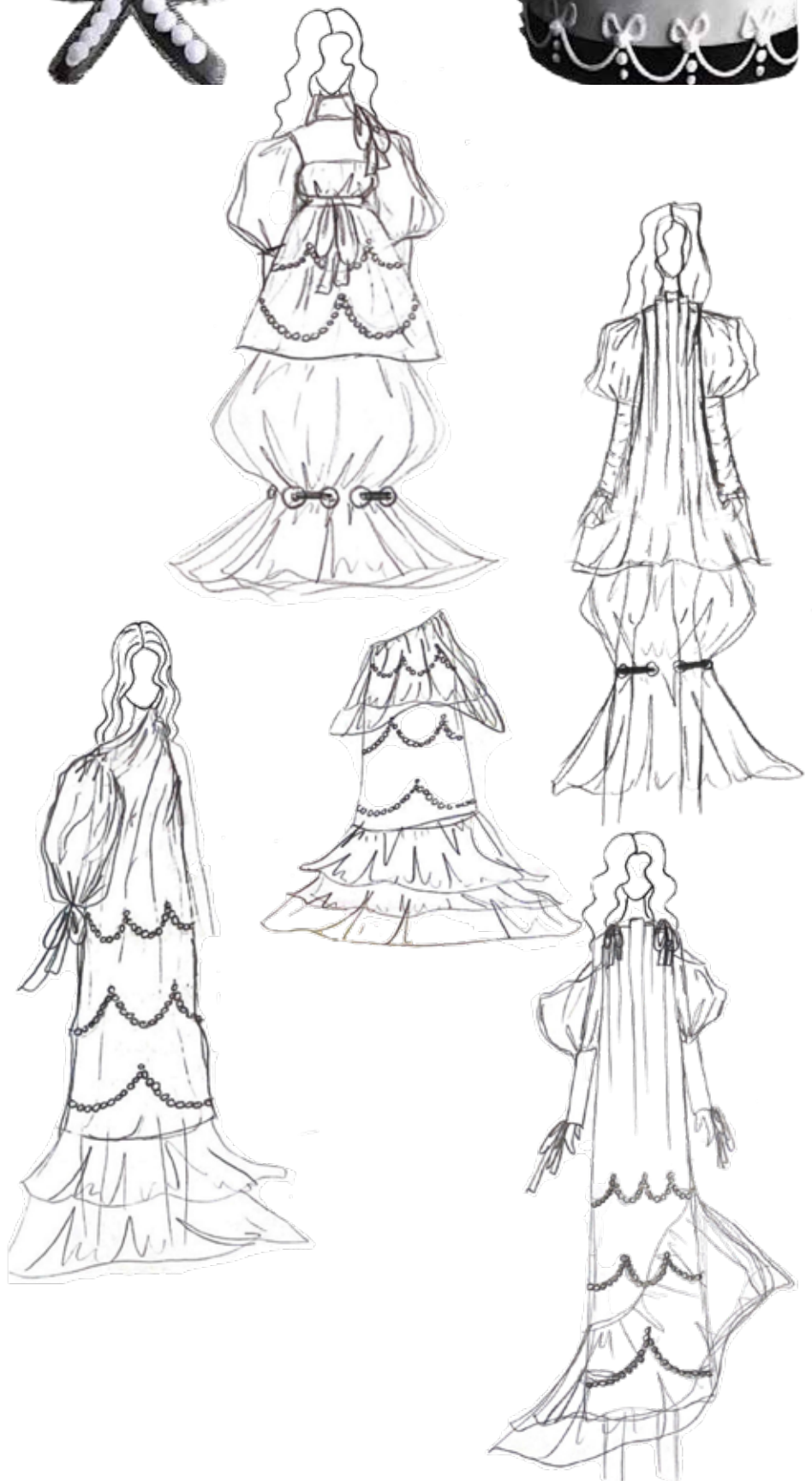






Design on left:

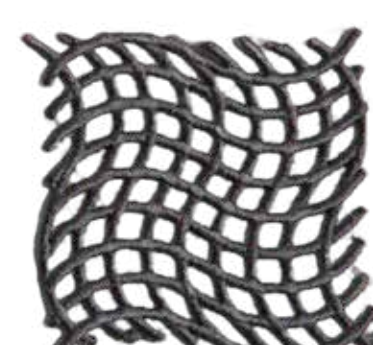
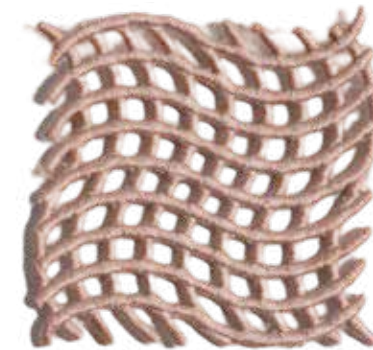
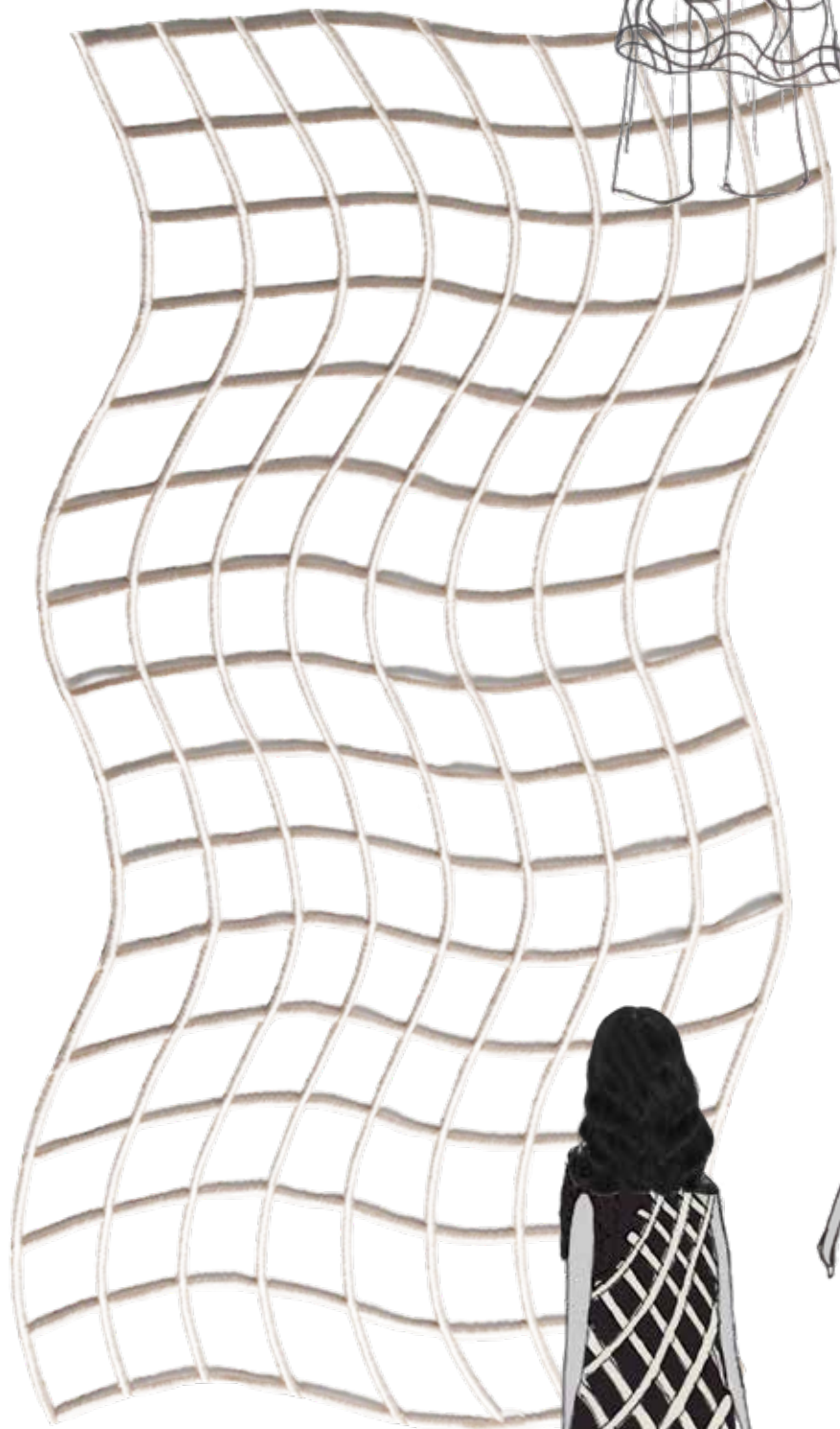
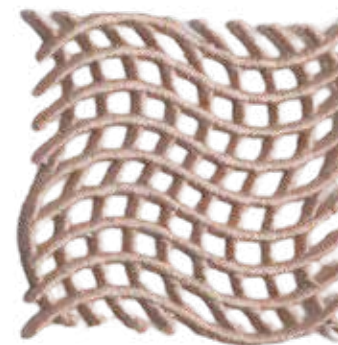
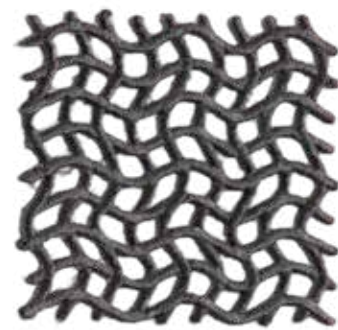
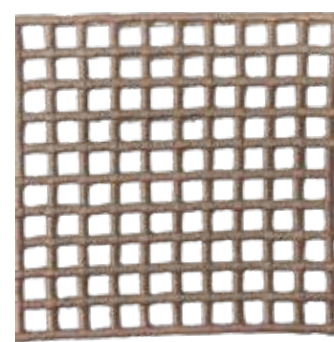
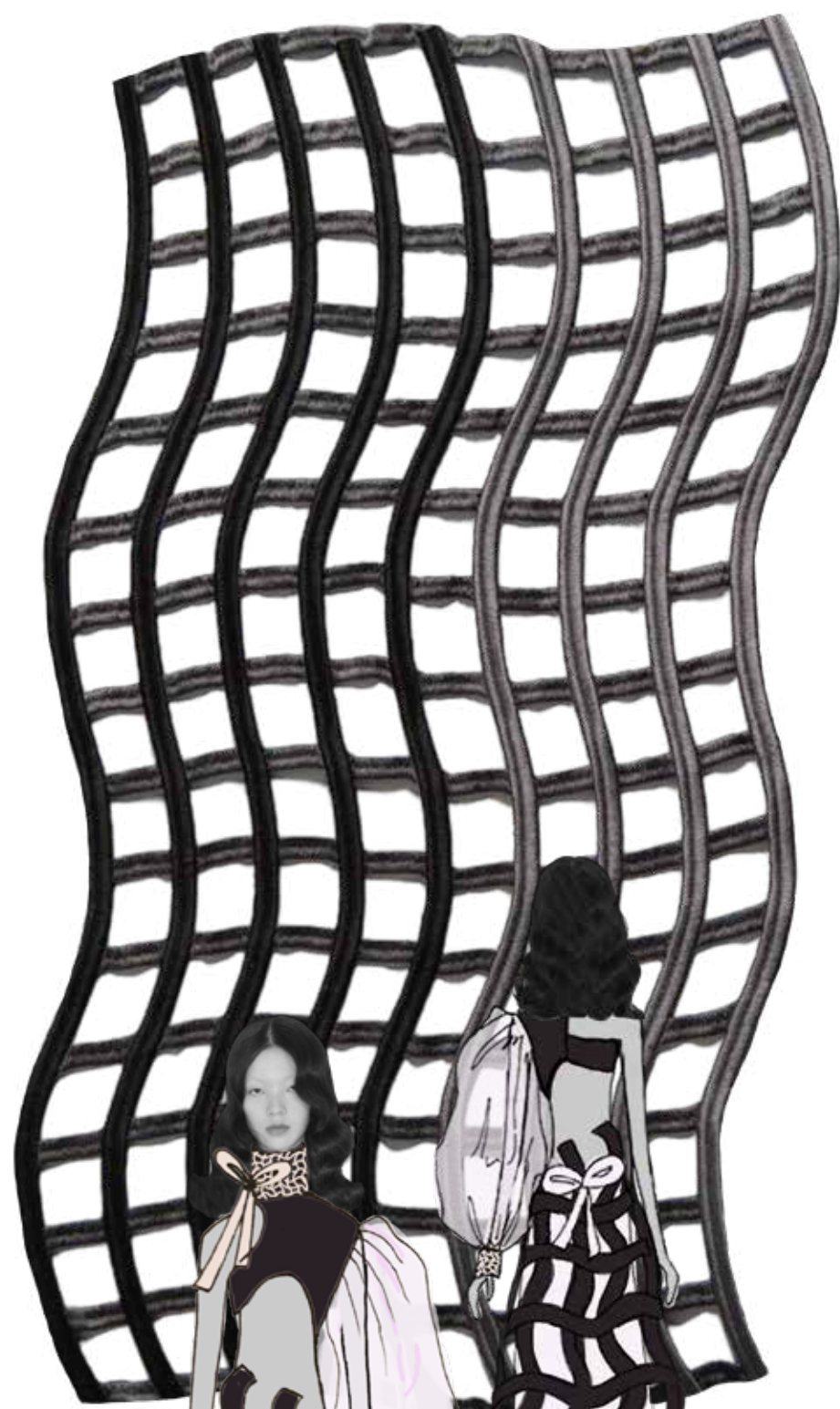
Main fabric - 100% wool (pleated at neck) with digital embroidery pearls created by layering raised satin stitch  
 Ribbon fabric - created from digital embroidery (split satin stitch, 10mm width, 0.35mm stitch spacing, satin count 1, stitched onto badge backing and torn away at the end)  
 Sleeve and bottom ruffle fabric - cotton organdie (gathered to create volume)



Simone Rocha  
Spring 2012

Design in middle:

Top bodice fabric - structured satin, with grid digital embroidery in raised satin on the neck cuff to match the sleeve cuff  
 Sleeve fabric - cotton organdie  
 Trouser fabric - satin  
 Trouser overlay - wavy grid made from digital embroidery as shown in sample behind (split satin stitch, stitch spacing 0.35mm, stitch width 10mm, satin count 1, stitched onto burn away backing)



Design on right:

Dress fabric - structured satin (gathered at shoulder)  
 Dress overlay - wavy grid made from digital embroidery as shown in sample behind (satin stitch, stitch spacing 0.35mm, stitch width 5mm, satin count 1, stitched onto burn away backing)







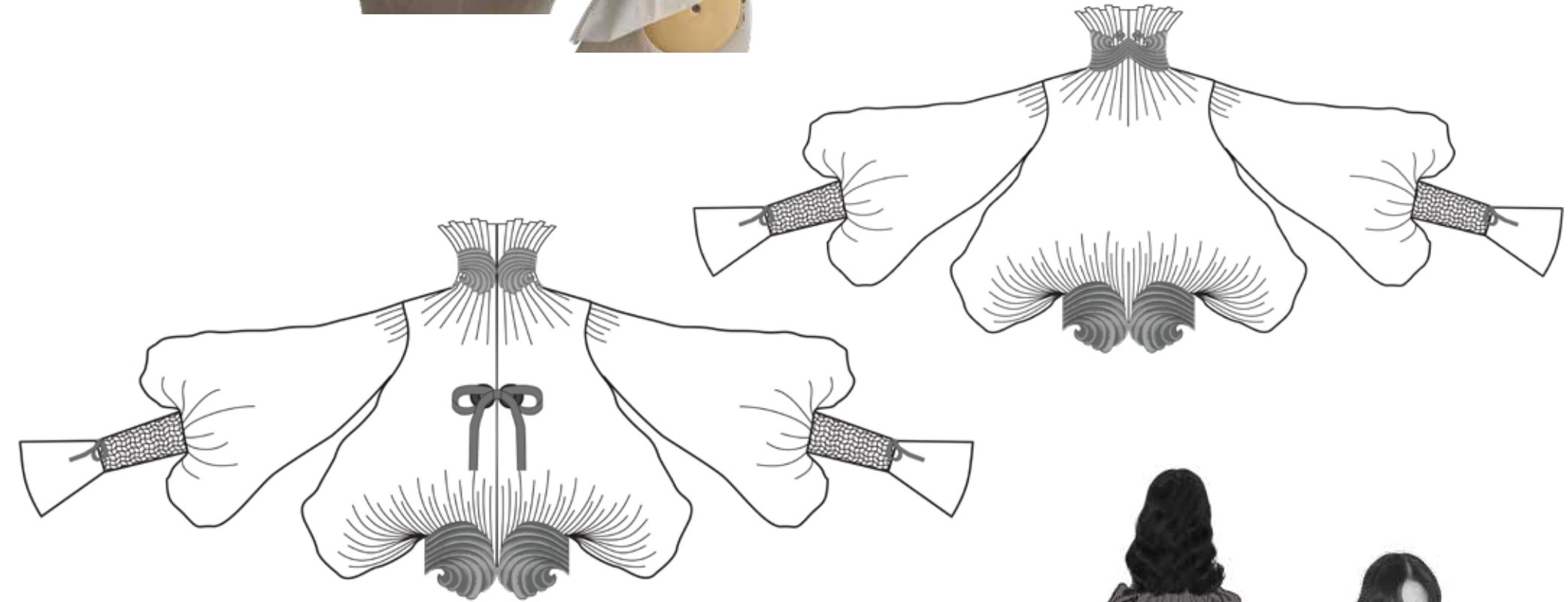
Ribbons made from digital embroidery:

- Left - split satin stitch, 10mm width, 0.35mm stitch spacing, satin count 1, stitched onto badge backing.
- Middle - mesh stitch, 50mm width, stitched onto burn away backing.
- Right - split satin stitch, 30mm width, 0.35mm stitch spacing, satin count 1, stitched onto burn away backing.



Development of hero design, starting with draping a sample on a mannequin, to using paper to work out number of ten pleats and checking pattern, to toiling the shirt including a trial of embroidery on the neck line.

- Main shirt and sleeve material, and bottom trouser material - cotton organdie (gathered into ten pleats at the neck, shoulder, and bottom)
- Shirt cuff material - structured satin (with grid digital embroidery in raised satin)
- Shirt icing embroidery - digital embroidery stitched over the pleats (using builder, satin stitch, 0.35mm stitch spacing, satin count 1)
- Main trouser fabric - satin
- Trouser icing embroidery - digital embroidery stitched over the gathered cotton organdie (using builder, satin stitch, 0.35mm stitch spacing, satin count 1)
- Ribbon fabric - created from digital embroidery (split satin stitch, 10mm width, 0.35mm stitch spacing, satin count 1, stitched onto badge backing and torn away at the end)



Eyelets created from embroidery using an un-split satin stitch and builder. The embroidered ribbon is threaded through to hold the shirt together in the middle of the centre front.

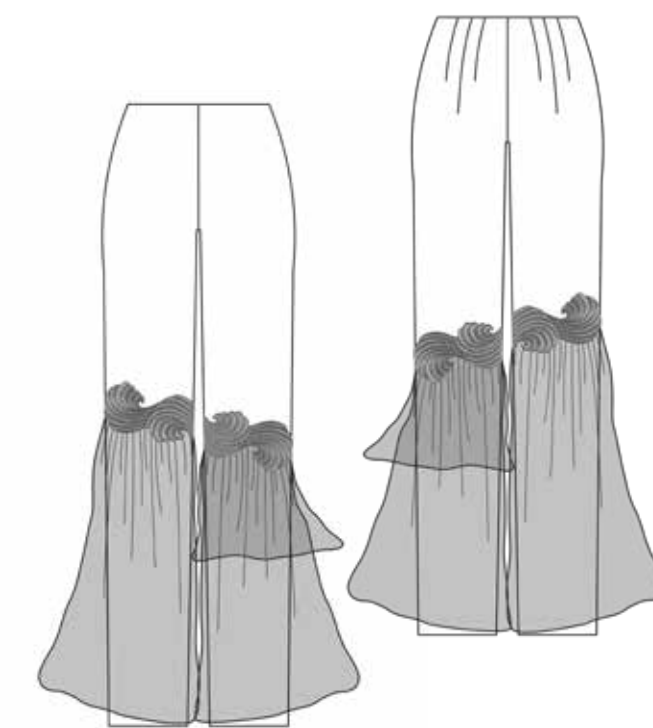


Illustration of embroidery file for bottom of shirt, starting from center front, and ending at centre front.



