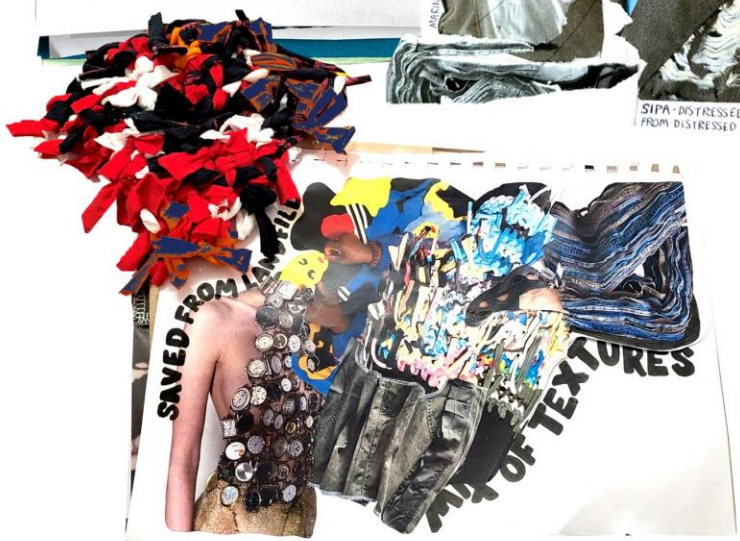


MAKE-DO AND MEND

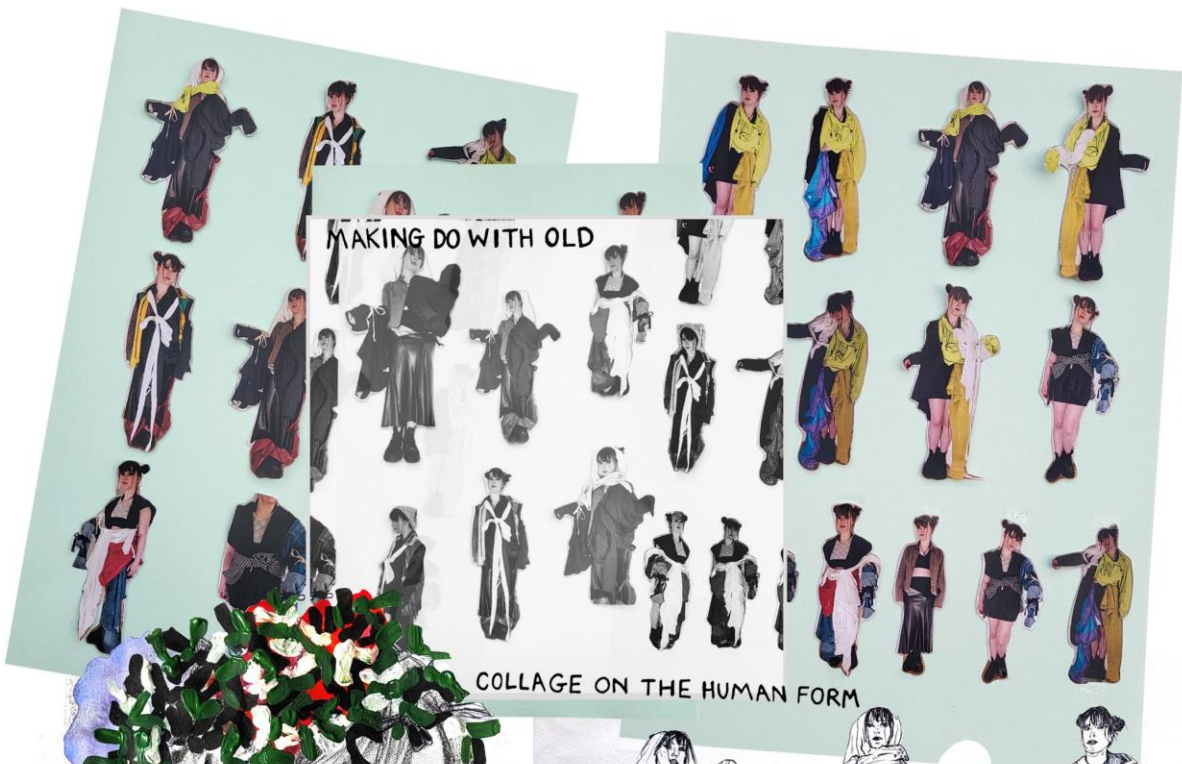


Designing with 'waste' and redundant materials.
Drawing inspiration from the wartime origins of 'making do'.



"MEND IT, FIX IT, MAKE DO"

AMY MATTHEWS



MAKING DO WITH OLD

COLLAGE ON THE HUMAN FORM





Constant advancements in military technology, materials and garment construction, mean that they are strong, durable to re use, and in constant redundancy.

EMULATING MARGIELA'S STYLE OF DENIM RE-WORK

MAISON MARGIELA

Gathered voluminous forms inspire pleating & ruching.



OVERLY FEMINE DETAILS OF WEDDING DRESSES RE-CREATED IN AN OVERSICED, GENDER DISTORTED WAY.

Is it insensitive to re-make with ceremonial dresses?



ADRIENNE L'EVY

PANELS INCORPORATING BONING, RIPPED SEAMS + AN UNFINISHED AESTHETIC



PANELS FASTEN TOGETHER -> REPLICATE SACK OF WEDDING DRESS

Shirring



large silk straps pleated to create the handle.

big silk bows

recycled back fastening panel of wedding dress.

ribbon fastening of wedding dress threaded through pleats

ruched + patch-worked silk off-cuts.

embroidery beaded flowers recycled into bag.

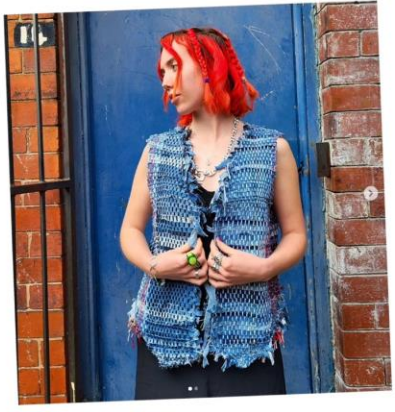
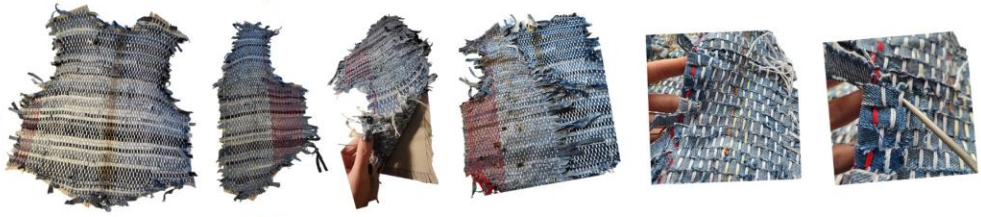
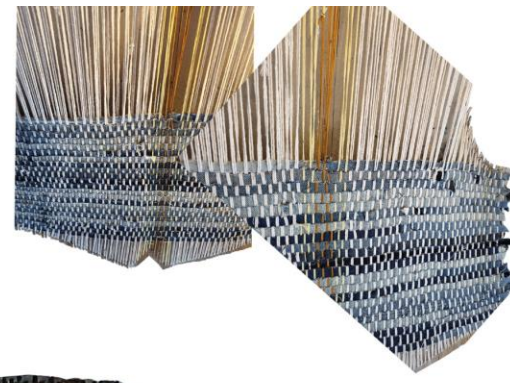
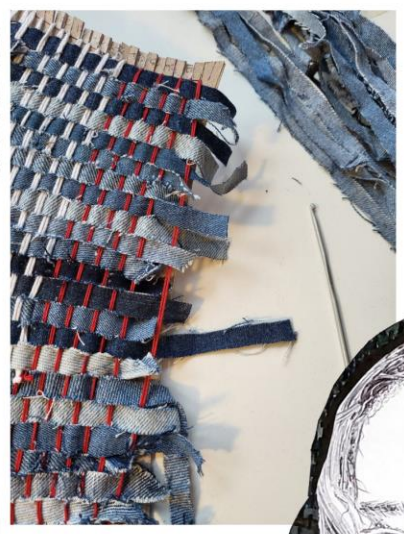
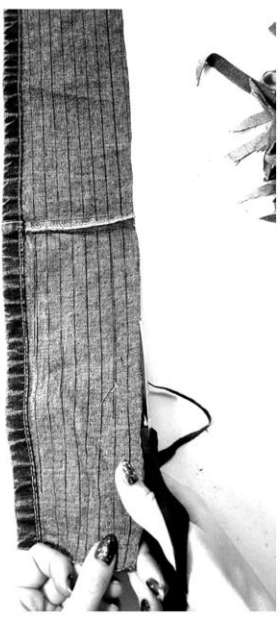
Deconstructing a wedding dress.



REPLICATING TACTICAL GARMENTS

"MEND IT, FIX IT, MAKE DO"

AMY MATTHEWS



handle paired from reused denim jean seams.

zip pliska

woven from ten strips of scrap denim.

inspired by floral motifs of deconstructed wedding dress.



Cheap, mass produced garments (t-shirts, jeans) become strongly knotted into items with increased aesthetic value.





Donated silk off-cuts
from bridal production



Individually
ruched & patchworked
by hand.

Mouflage
→ designing
on the
stand.



Hides impact of bow fastenings



Exploring styling

→ Military 'squares' are working better as a separate developing 'shirt'.



TEST SHOOT BY @lily_cay-



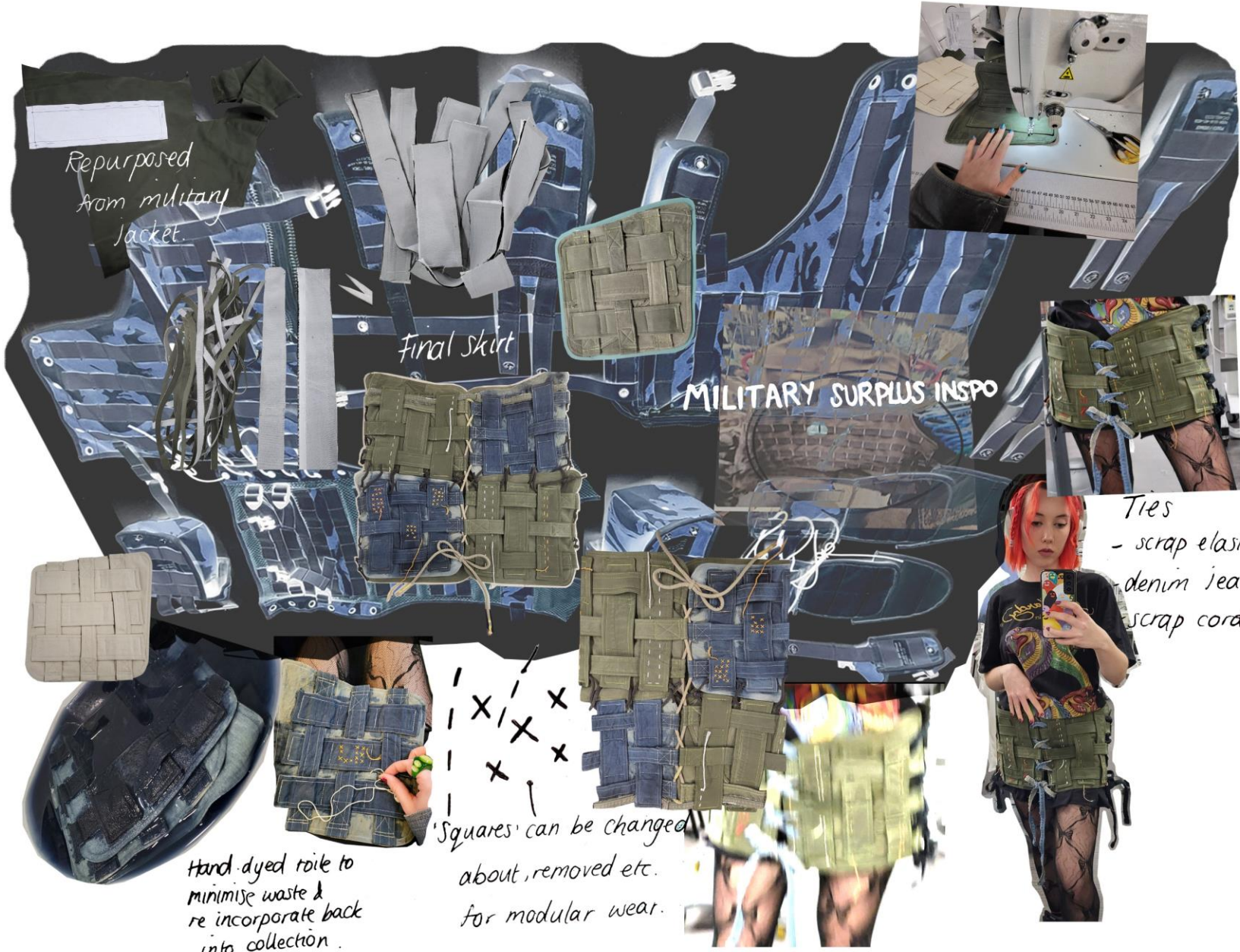
Neater finish to reflect well-constructed part of dress.



Contrast highly feminine silk boxes with structured genderless layers.



Contrast with 'scrappy' finish to badly made t-shirts.



Repurposed
from military
jacket.

Final skirt

MILITARY SURPLUS INSPO

Ties
- scrap elastics
- denim jean seams.
- scrap cording.

Hand-dyed role to
minimise waste &
re incorporate back
into collection.

'Squares' can be changed
about, removed etc.
for modular wear.

Junya Watanabe
- silhouette!



SEAMS?



MAISON MARGIELA



Contrast highly
feminine silk
bases with structured,
genderless layers.



PATCHES
INCORPORATING
'WOVEN' SCRAPS

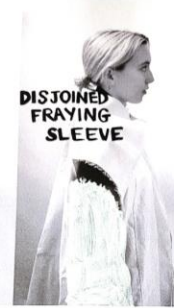


PANELS OF PIN-TUCKS.

'Mending' a jacket in its
original form.
Blanket stitch?
Paint?



PATCHWORK. CONTRAST STITCH. FRENCH SEAMS. STORM FLAPS.



DISJOINED FRAYING SLEEVE

NO SLEEVE?

SLEEVELESS TRENCH
→ WOULD ALLOW DETAILS OF GARMENTS UNDERNEATH TO SHOW THROUGH.



Repurposing wedding dress to handmade lining.

Adding plenty of volume



Meticulously picking apart Military Overalls.



"MEND IT, FIX IT, MAKE DO"

AMY MATTHEWS



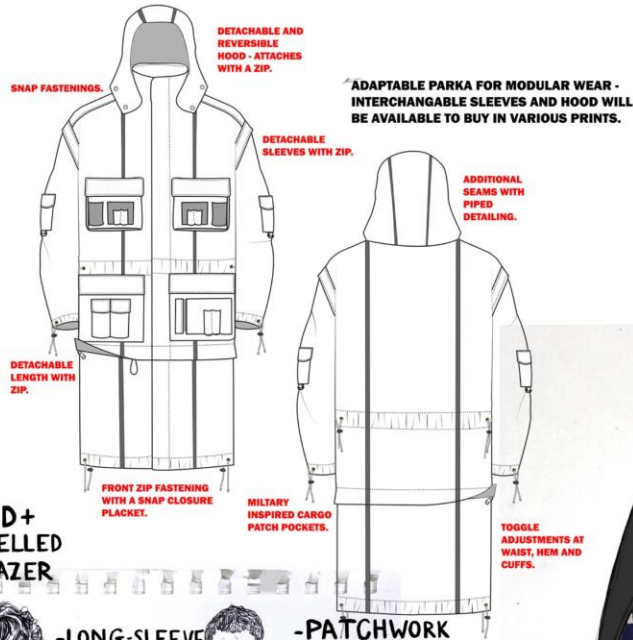


"MEND IT, FIX IT, MAKE DO"

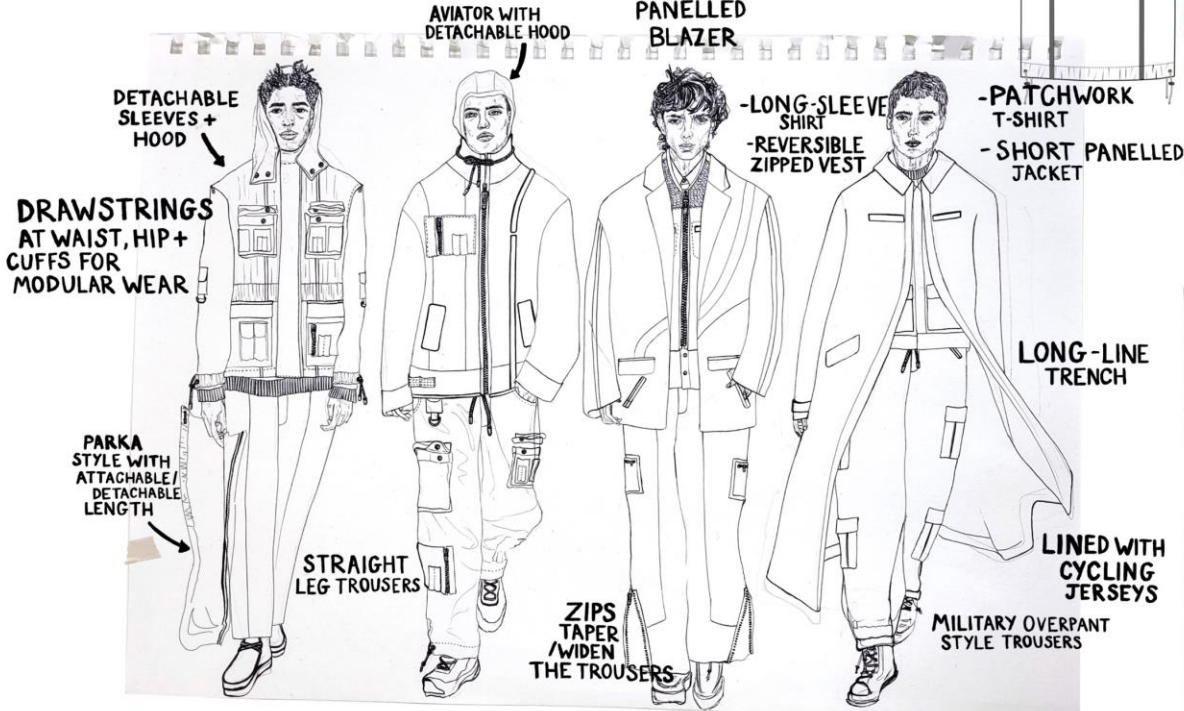




**Shortlisted entry to Clothsurgeon
AW 23/24 live brief**



**PIPED +
PANELLÉ
BLAZER**



Drafted from basic bodice & sleeve block
 → widened bodice & dropped sleeves
 → adapted to double-breasted style
 → hand-sketched collar & lapel directly onto the bodice to create a natural fold.
 → painted onto finished toile to figure out shaped panels placement.



Minimal Embroidery, kept to the sleeves, so not distract from the shapes within the jacket.



Denim panels will be patched together from old denim jeans.



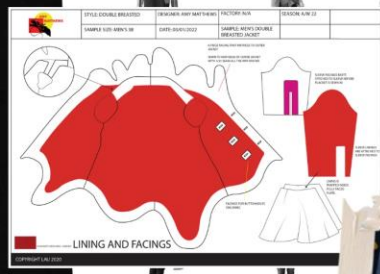
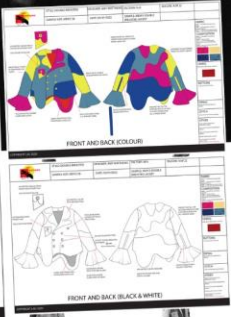
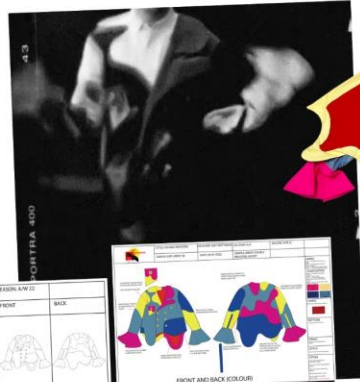
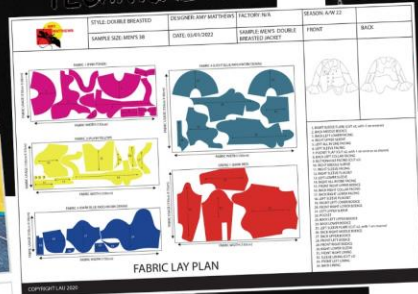
ELECTRIC SUITS FOR BOYS AND MEN

AMY MATTHEWS - AW22/23

PANEL CONSTRUCTION PROCESS



TECHNICAL PACK



ELECTRIC SUITS FOR BOYS AND MEN

AMY MATTHEWS - AW22/23