



S/S 24

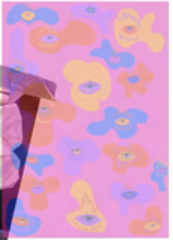


Through The Kaleidoscope

Silhouette



Through The Kaleidoscope



Neat

Asymetric Sleeve Supported being strong

Twisted

original Jacket

Hand Made

Layered fabric organza in front with white tulle

in base hanging beads

similar side panel

asymetric shoulder

1/2 skirt-like bodice over the leg

beaded top

folded fabric - more distorted point

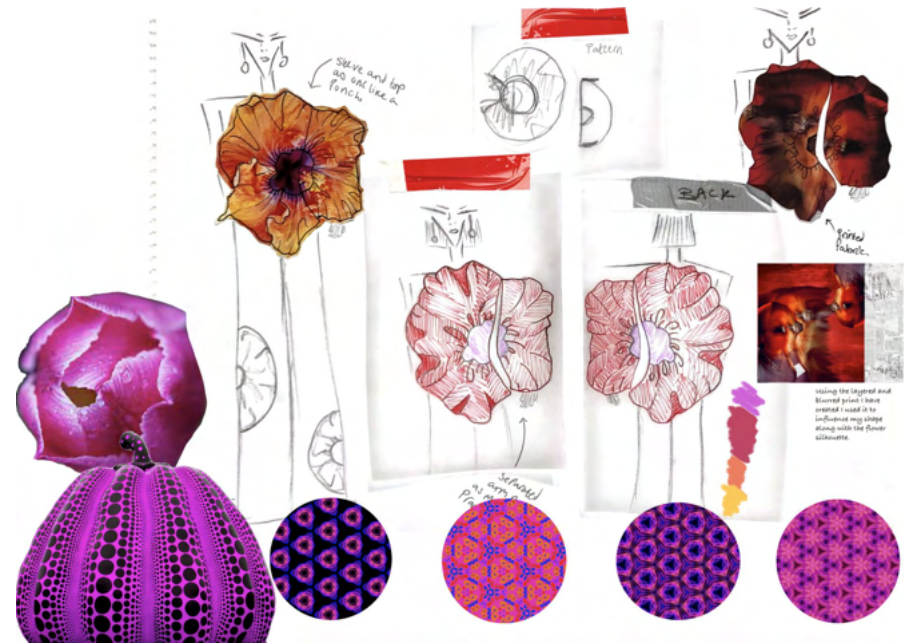
inverted pleat

asymetric skirt

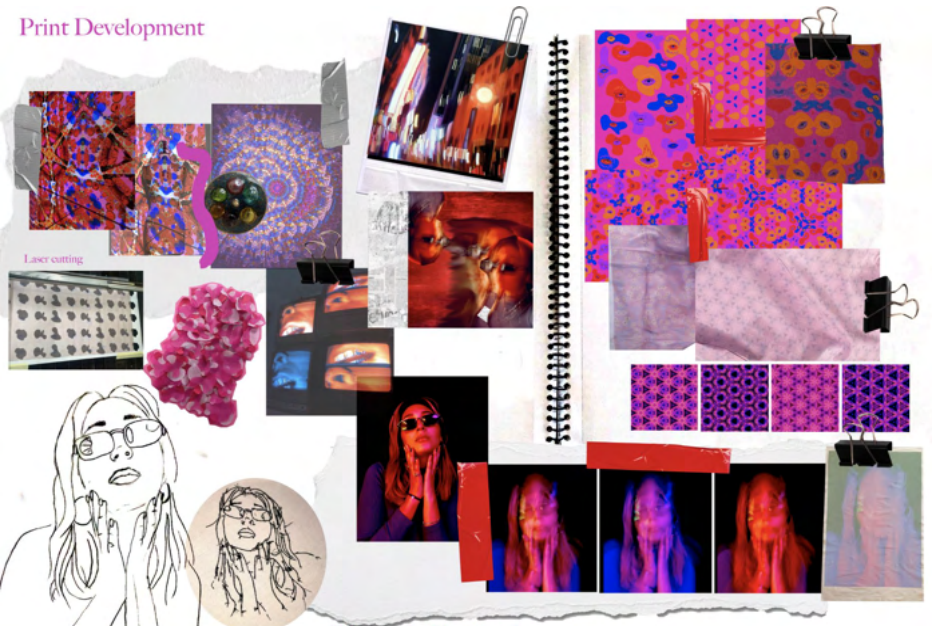
off the shoulder

semi pleated silhouette

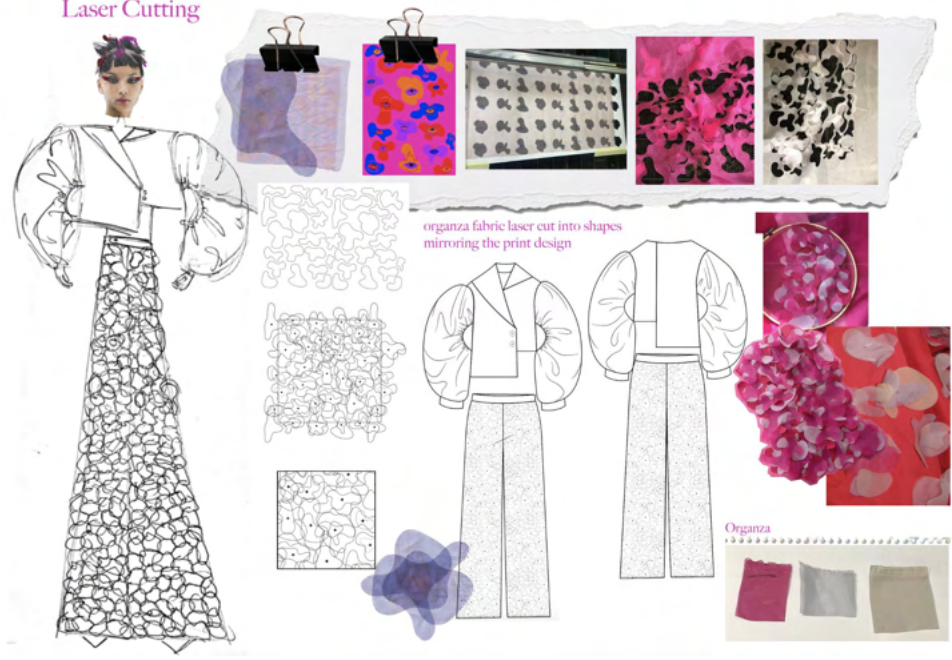
Panel with just a few big prints



Print Development



Laser Cutting





Pantone 3221 C Hex: #143875 RGB: (20,122,119)	Pantone 3546B C Hex: #8B4DCE RGB: (139,77,183)	Pantone 3395 C Hex: #D93025 RGB: (217,48,37)	Pantone 193 C Hex: #E63976 RGB: (230,57,118)	Pantone 185 C Hex: #E63976 RGB: (230,57,118)	Pantone 1645 C Hex: #FF6600 RGB: (255,102,0)	Pantone 133 C Hex: #FFCC00 RGB: (255,204,0)



← broad fabric.
← material
centre



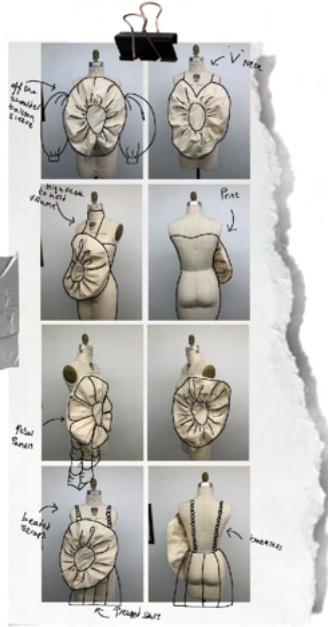
Colour blocking



← hand sketched
embroidery



needs to be bigger
to cover both sides.



off the shoulder
gather area

physical
volume

Pin

flap
flap

triple
flap

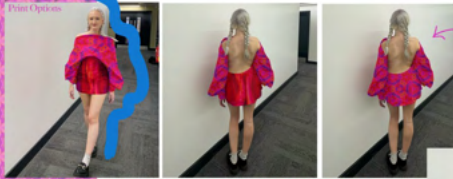
triple
flap

triple
flap

triple
flap

triple
flap

Print Options



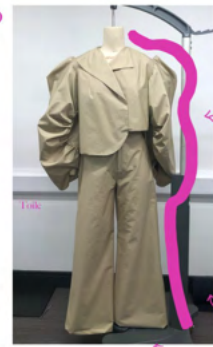
Deciding on Print Placement



Outfit one



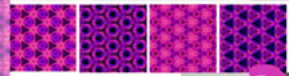
Outfit Two



Suit silhouette to fit into, neck to be more rounded

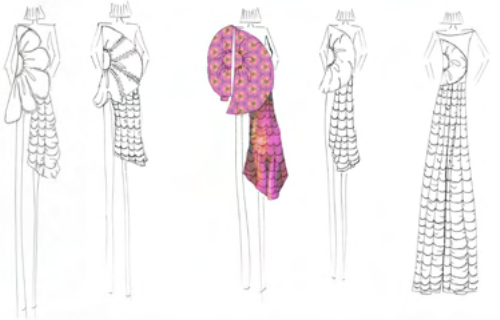
Trousers covered in laser cut Potted organza.

laser cut shapes inspired by shapes in the print.

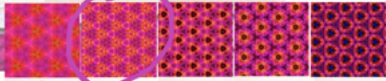


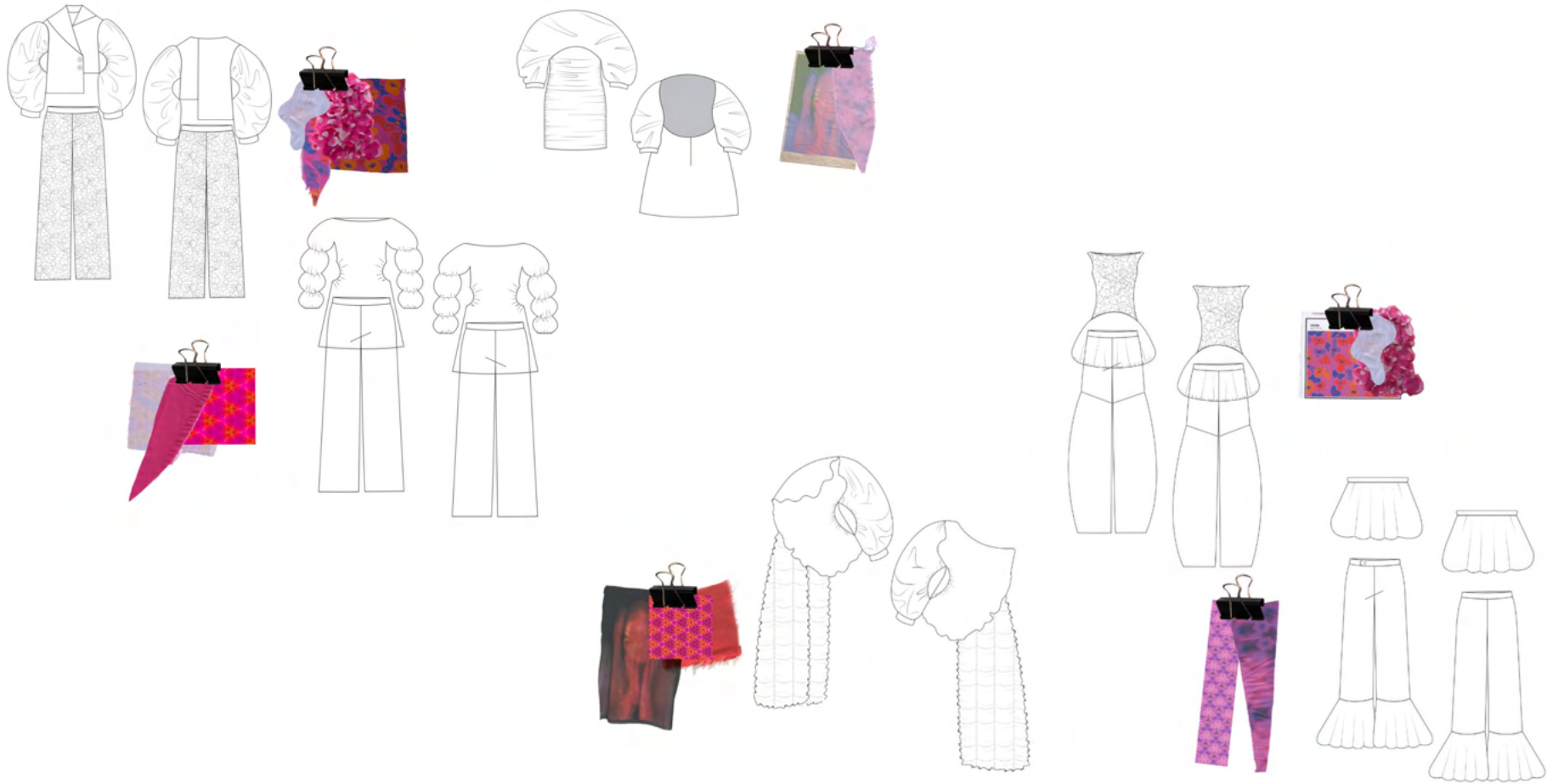
Tails





Outfit Three





Through The Kaleidoscope



Through The Kaleidoscope



Through The Kaleidoscope

Sartorial Skate



clothsurgeon®

Silhouette



clothsurgeon®



clothsurgeon®



Paul Smith

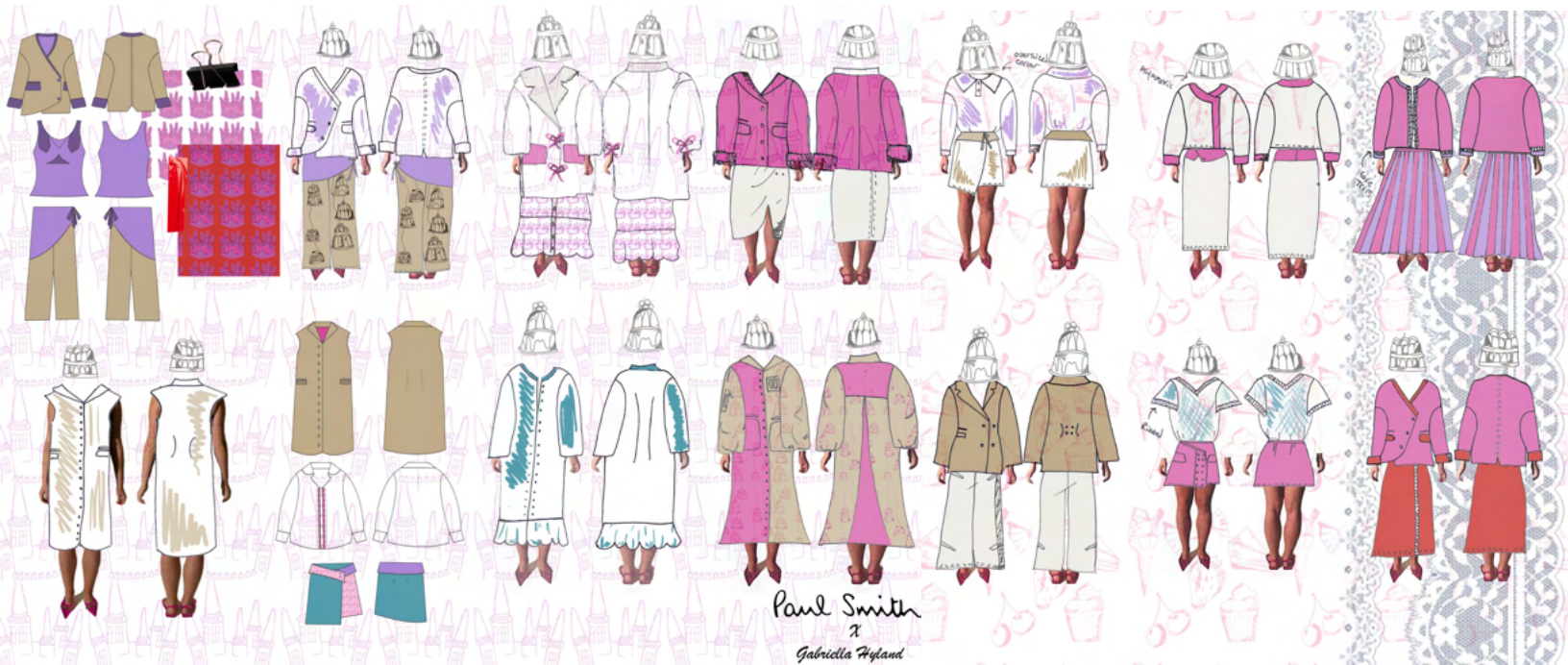
Gabriella Hyland

1/1/24



"CHILDHOOD ECHO"





Paul Smith
x
Gabriella Hyland



Paul Smith
x
Gabriella Hyland



Paul Smith
x
Gabriella Hyland



Paul Smith
x
Gabriella Hyland



Paul Smith
x

Gabriella Hyland