





A Body In The Act Of Becoming



C O N

The catalyst for this collection is the relationship I currently have with my body. To give the viewer an opportunity to connect to the project with their own narrative, my concept can be found at the end.

Your Viewpoint:

Share your own interpretation of the concept. Please feel free to write on these two pages.

C E P T



'Discarnate Beings'
Muse studio image: the human body with mannequins.

Adhering to a perfected image restricts the muse

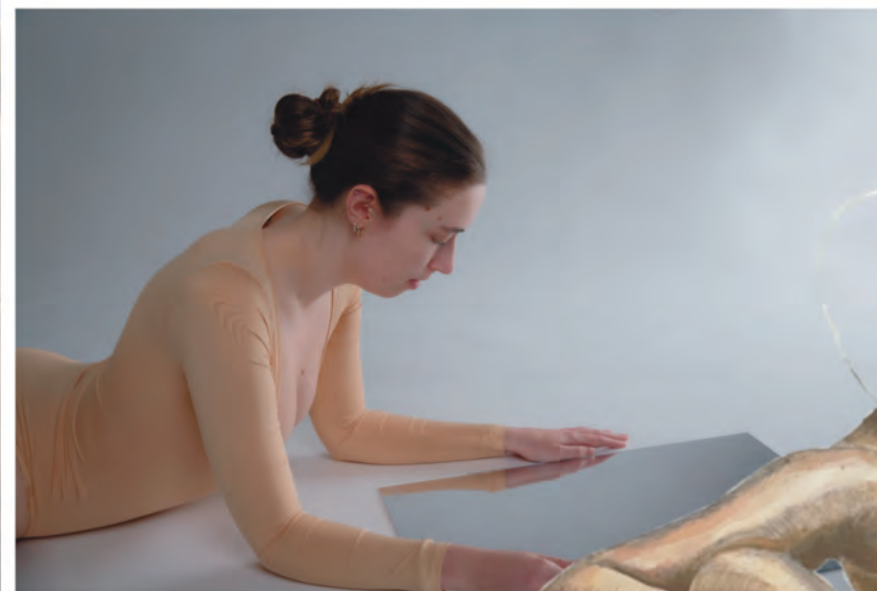
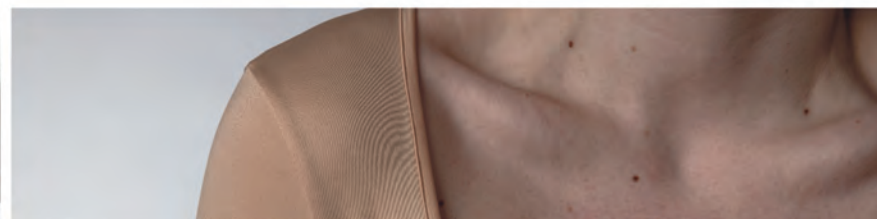


Camouflaged by a veil of identity



She looks in the mirror and sees a version of herself reflected back...
She doesn't know if this external version of identity is the true depiction of who she is, or a character to be shown to others.

Concentrating on the digital identity objectifies and materializes
our living bodies



The mannequin's form blurs detail and reality
much like the edited image of
the digital self.

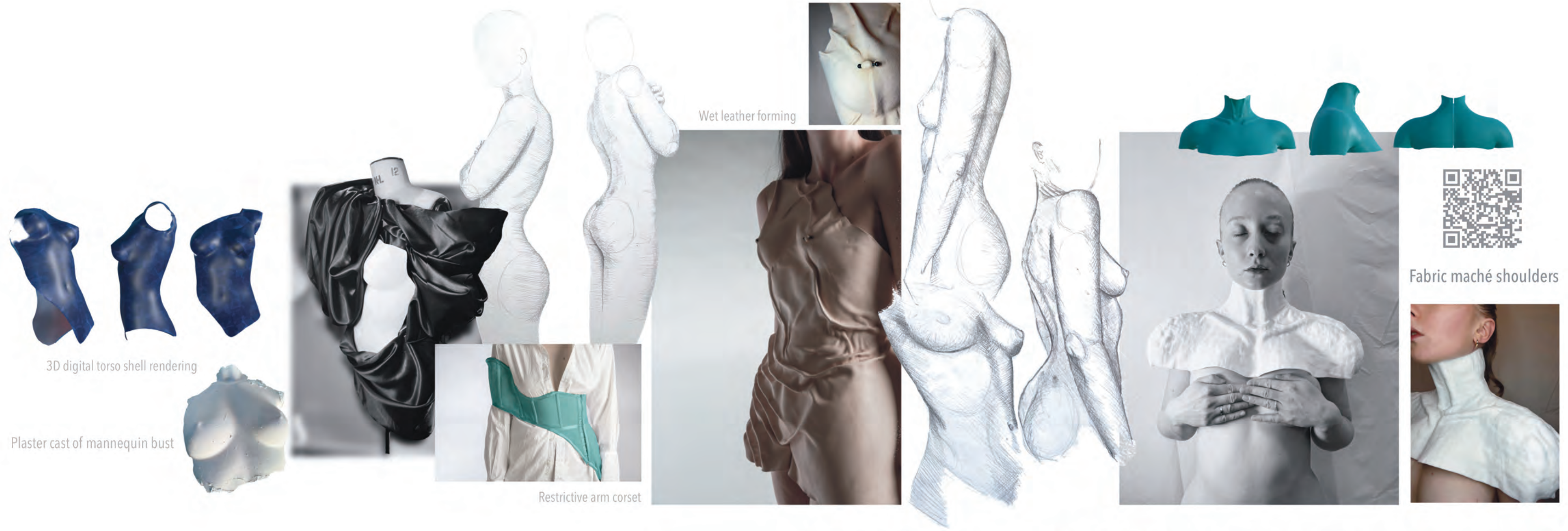
MUSE



Textile research and development

Capturing the female body

Experimenting with multiple textile mediums to find a suitable material that can be used to restrict movement or appear to.

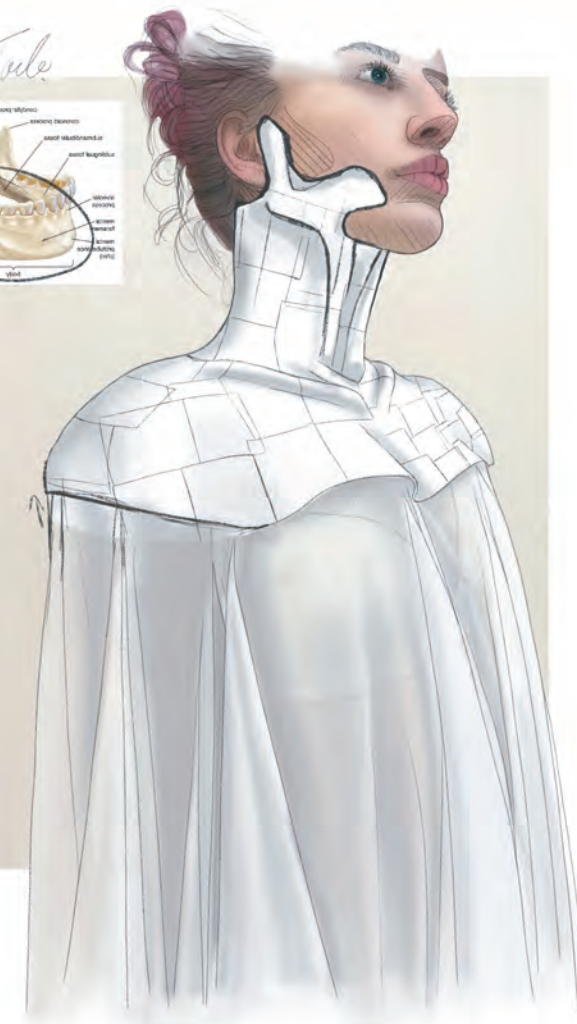
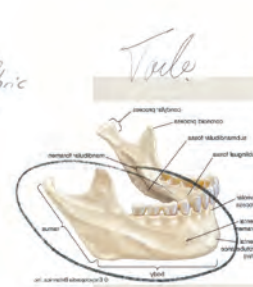
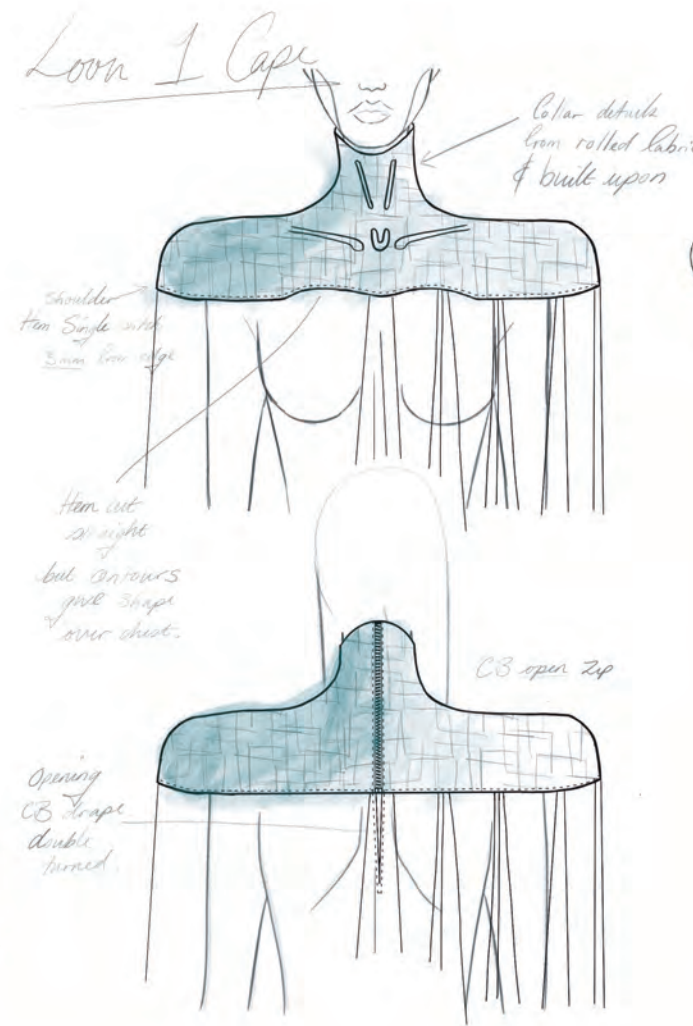
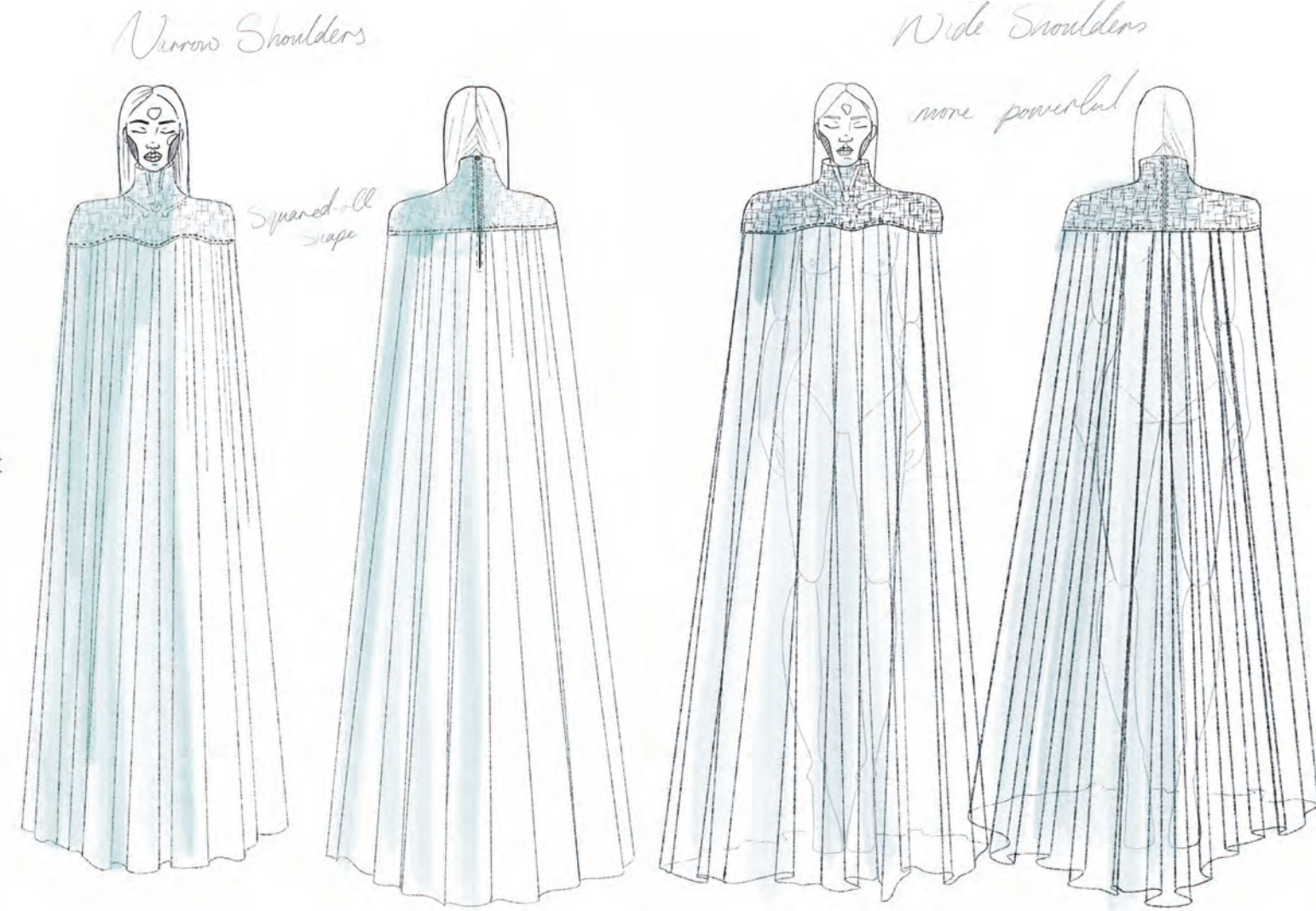


Trying to capture the finer details of the body's contours, through casting or forming.

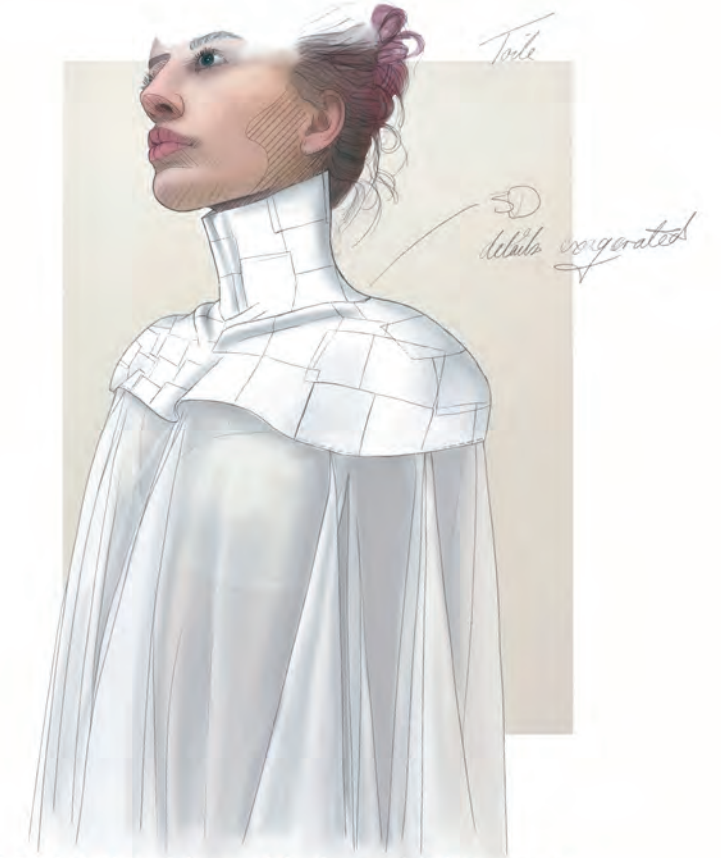
Experimental Mediums / Key Project Artifacts



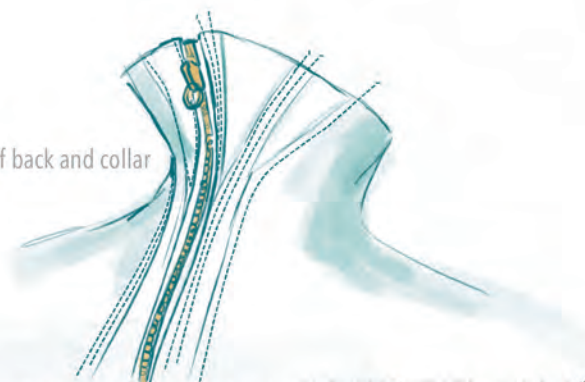
Anonymous Cape Development



Maché shoulders with draped fabric cape



Augmentation of back and collar



3D features added



Grey maché provides darker colour base for digital print

Structured Cape

Flowing digital print taken from tracings of fabric on the body



Chiffon maché shoulders with a satin lining and chiffon drape



Collage with body parts and fabric tracings



Teal

Initial colour selection - blues and greens



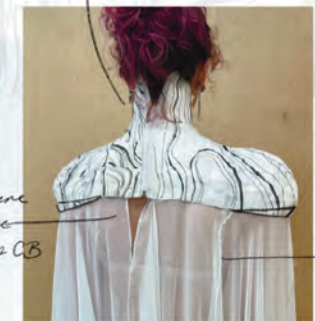
Fitting



Contour Shoulder
hem up.



Reduce front Collar height
- Chewing
Trouble shoot
Shape / closure at top



Toile changes



Experiment with applied print.



Chosen Development



Solid maché shoulders appear darker than drape



Process video



Print before mirroring and repeat



Cuff 3D piping details following tendons

Fitting : add gather to skirt



Toile 1



Dress clings to the body, celebrating delicate curves whilst highlighting protruding bones and tendons

Jersey Dress



Ruched skirt side seam



Mariano Fortuny's phenomenon - by contrast an awareness of the body not as a passive receptor of outside stimuli, but rather, as the medium through which we experience the world.

'Classical' Female body studies - smooth curves object of spectacle of classical culture.

Cuff trial with thumb hole



Bust twin needle piping detail frames nipples



Draped skirt and high rise bodysuit leg frames the protruding hip



Final development sketch

4 way stretch Jersey Dress

- Body Suit + Attached skirt Combo
- Straight bodi reaches at shoulder-point
- Lowered skirt hem
- Vertical lining
- Twin needle piping detail Bust, Seam, Elbow, Seam of full
- High waist slightly upward of hip the hip body
- Poppers - waist + thigh
- Draped on - from ankle length skirt
- Skirt attached to full suit body suit SS
- Skirt hung in steps



Cold shoulder with straight cut neckline shows of collar bones



*off shoulder
Ruffled front
and back in
jersey
draped*

Ruffled



*Jersey Dress
But Draped
by area
Ruching in
of Back*

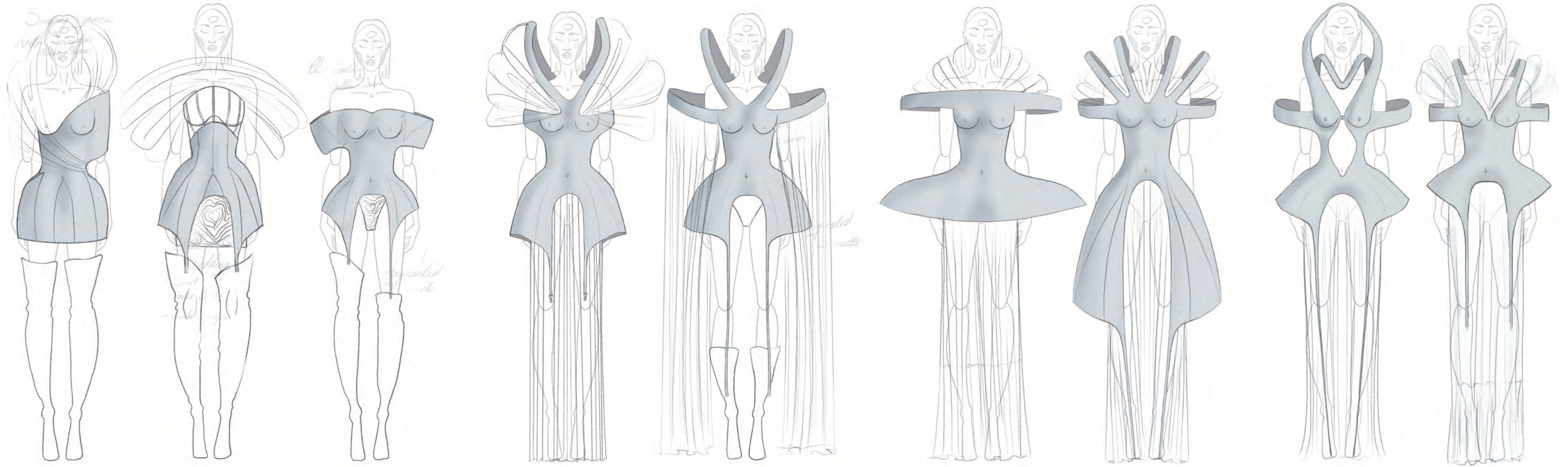


*Jersey Dress
of
Draped + Draped
Ruching
high waist fitted top*



Jersey Dress Development

Shedding Bodice Development



Back closure with panel, without placket



Illustration of fine appliqué strips



Mini mannequin augmentation exercise



Maché bodice before chiffon application



First toile



Toile

- Double strap
- Peplum shape
- Gather straps
- Long skirt

First skirt toile with rounded front panel



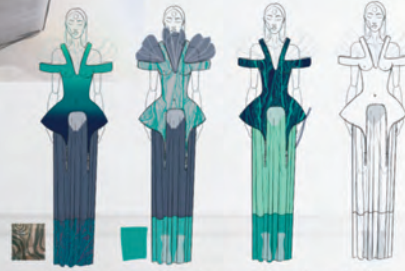
Volumes of chiffon strips creates wave texture that sheds threads



Chosen development



Back closure options, chose zip with placket

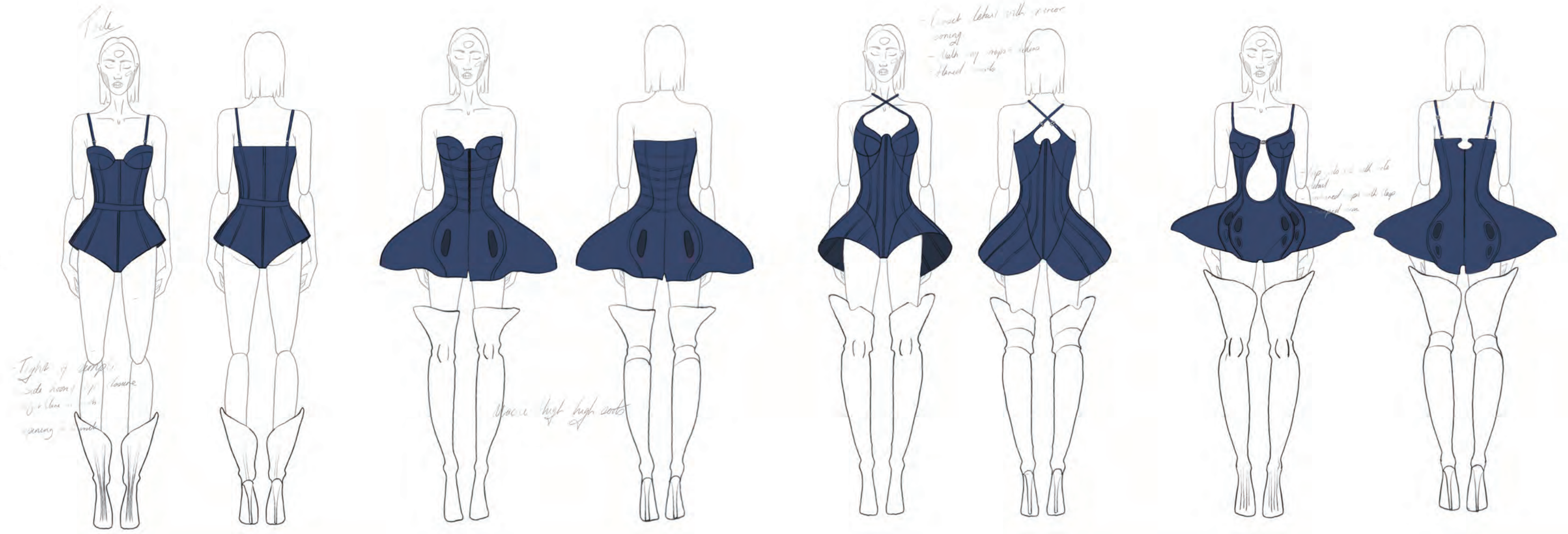


Toile design and color combinations before choosing white



Chiffon Skirt development
Arches and panels

Bony Bodysuit Development





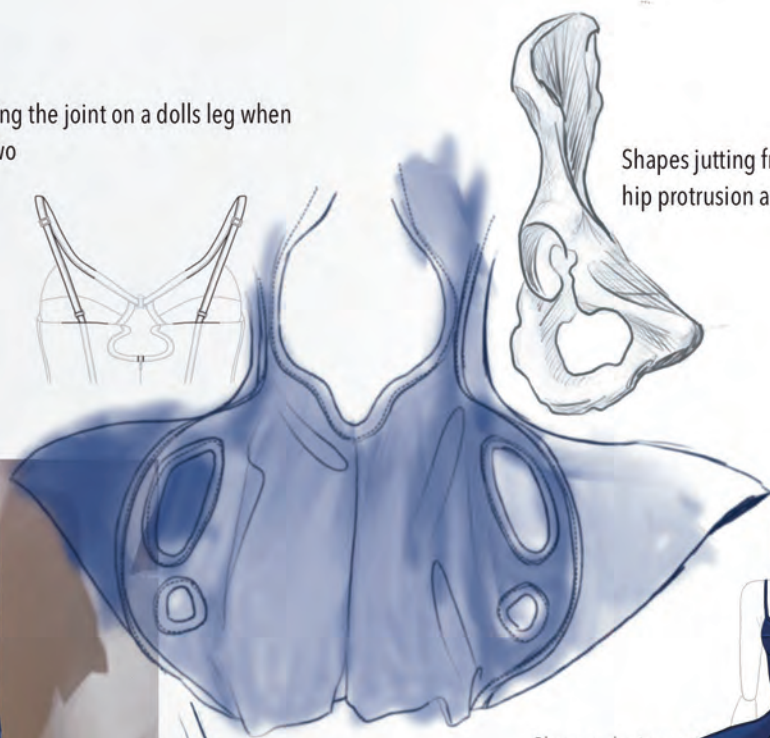
Thigh high boots made of fabric maché



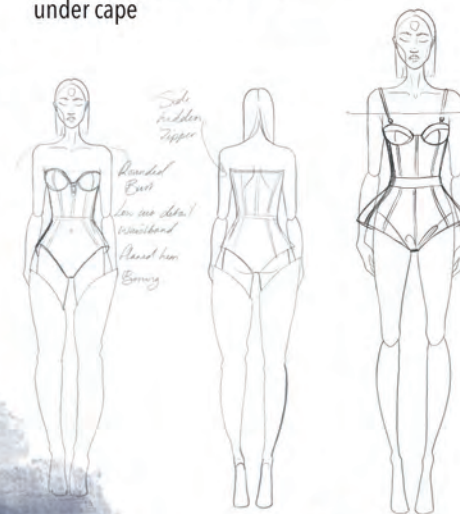
Boot hem follows that of the bodysuit, mimicking the joint on a dolls leg when moving, highlighting the space between the two



Shapes jutting from front exaggerate the hip protrusion and the cut-outs mimic that of the bone



Original design simple to go under cape



Boots capture details of the knee from a mannequin leg casting



Satin bodysuit with structural lines and cut-outs

Chosen design development



Maché formed binding



Original toile





Meg Fletcher

Mask line wire face piece



Gold plated wire sits gently on the contours of the face and décolletage



Nose ring



3D tendon details



How early can I add the detail to boots + nails?

Squared of heeled boots are covered in fabric maché that gives a matte, rough finish.

Sophie wears the nose ring flowing up into the hair.



ACCESSORIES



Thigh-high boots development

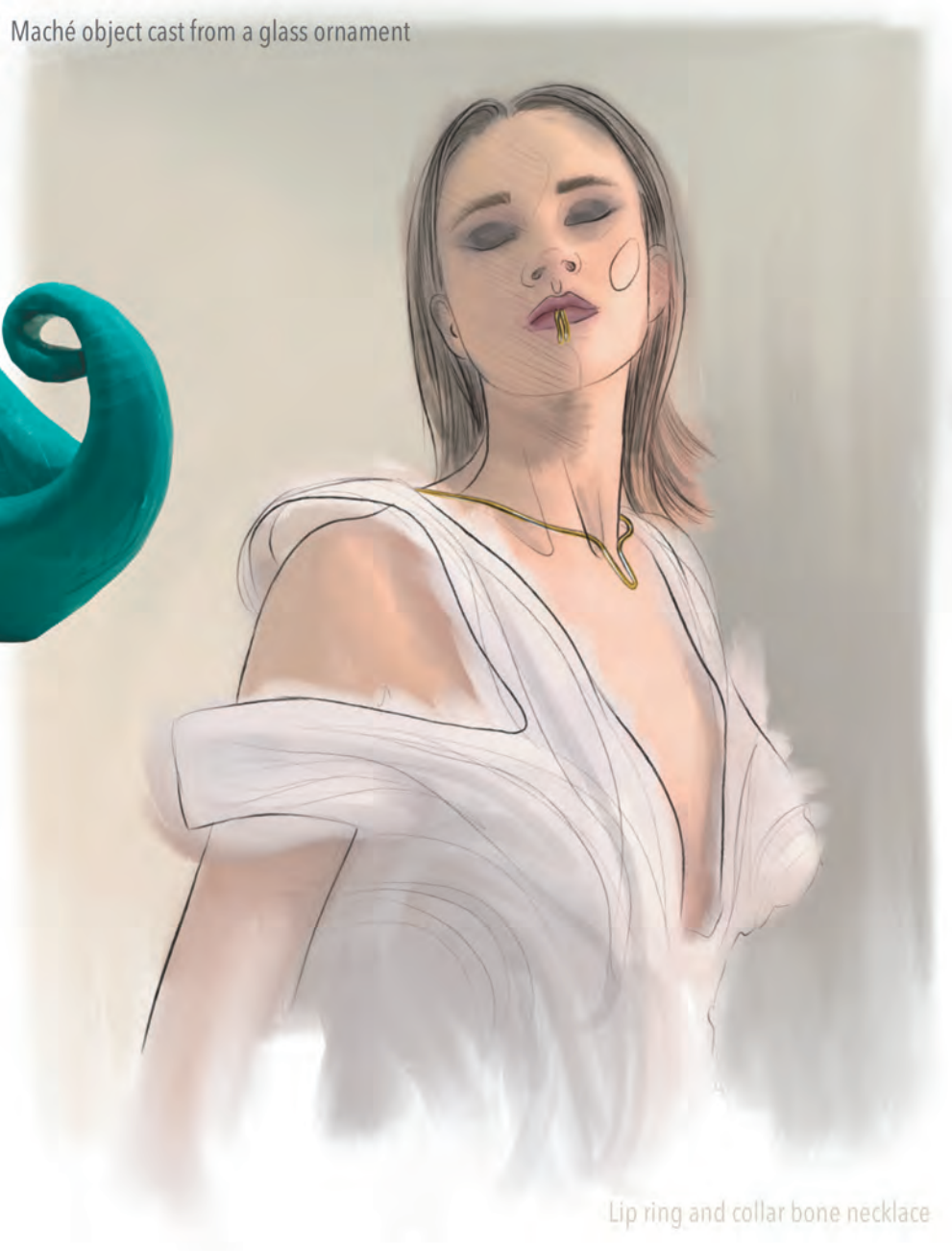
Tendon details



Arm object with chain maché cast from mannequin arm



Maché object cast from a glass ornament



Lip ring and collar bone necklace

Collection



Lip Ring and Collar Bone Necklace



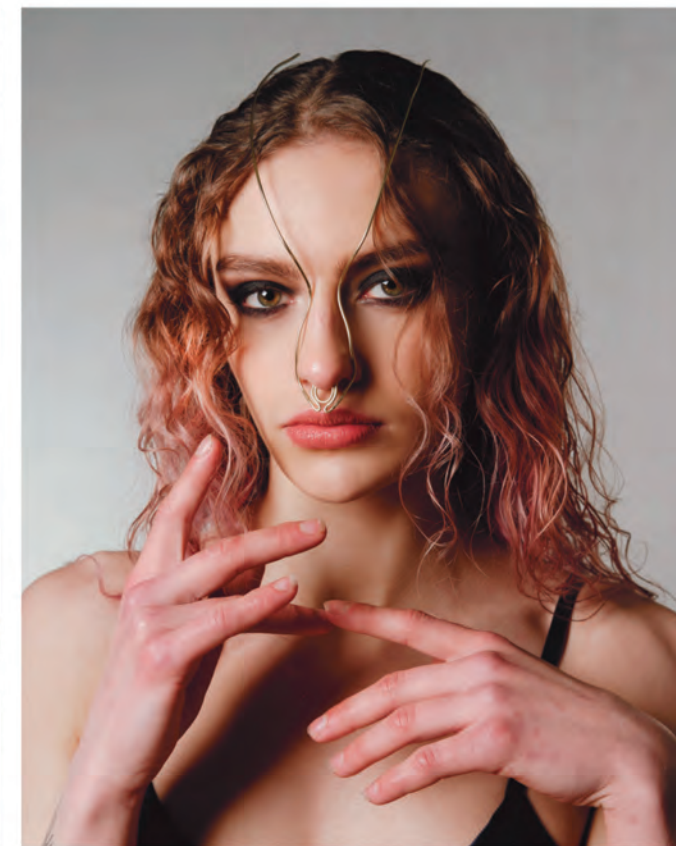
Maché Thigh-high Boots



Maché Arm Object



Maché Coated Boots

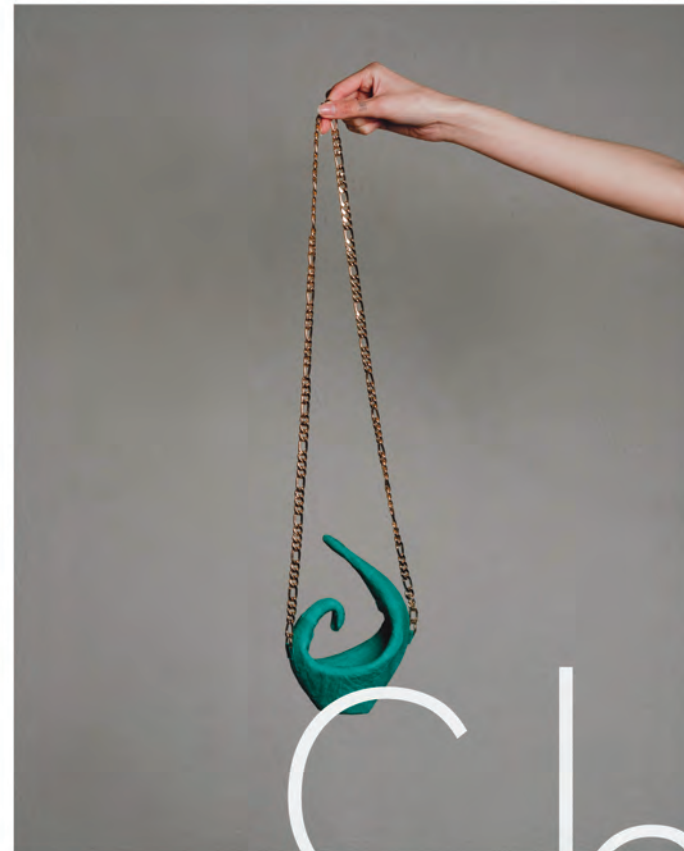


Nose Ring

Maché Coated Boots



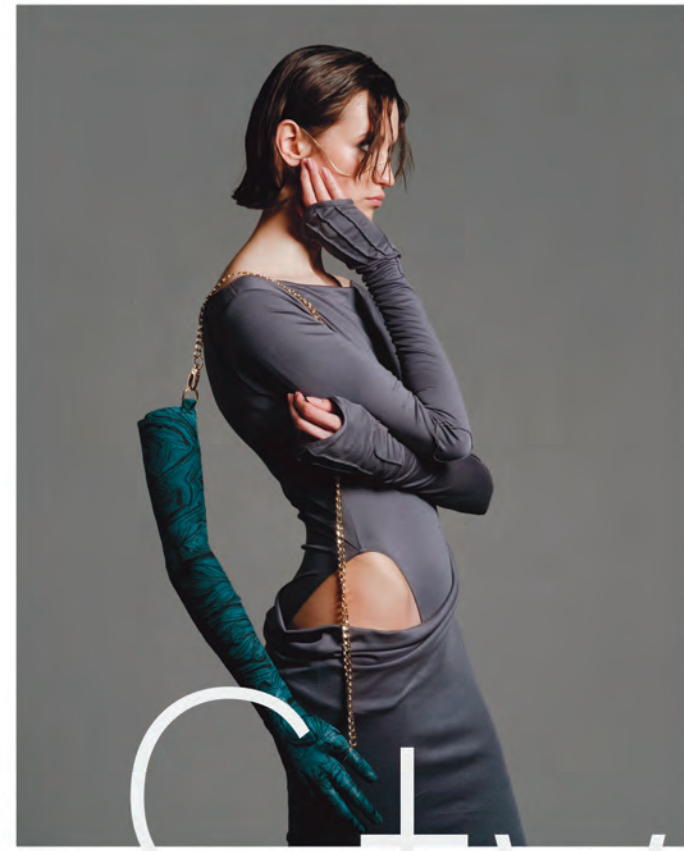
Maché Object



Cheekbone Face Jewellery



Maché Arm Object



Shredded Maché coated Heel



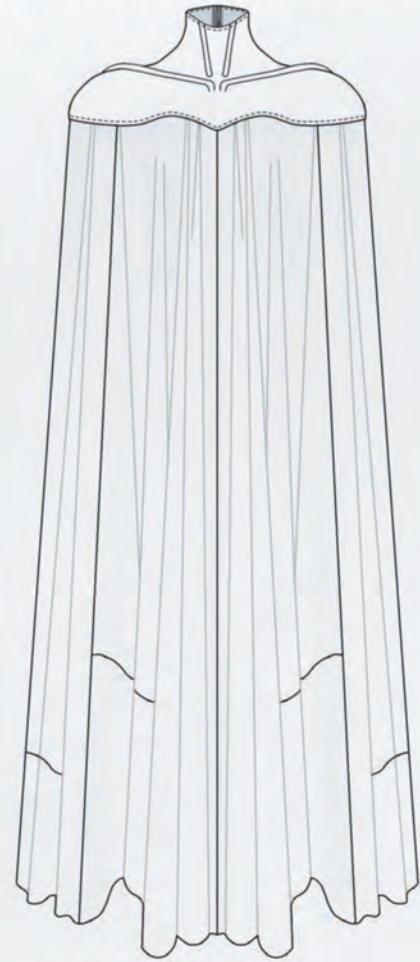
Shoot Styling



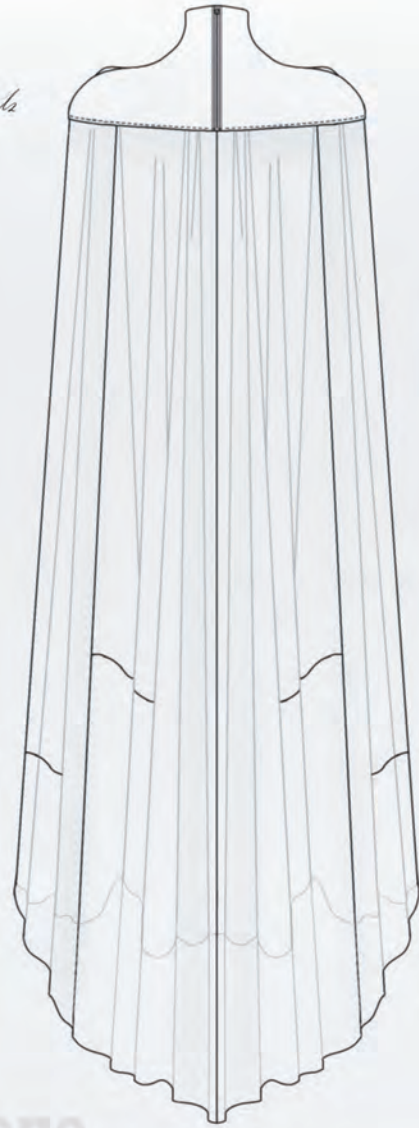
'The Ascension'
By Jack Herron



Soft Shell Mesh Shoulders with 3D details



The Anonymous Cape



Short train

Draped shell lace in digital print

Bolton Straps with attached draped skirt

Piping details

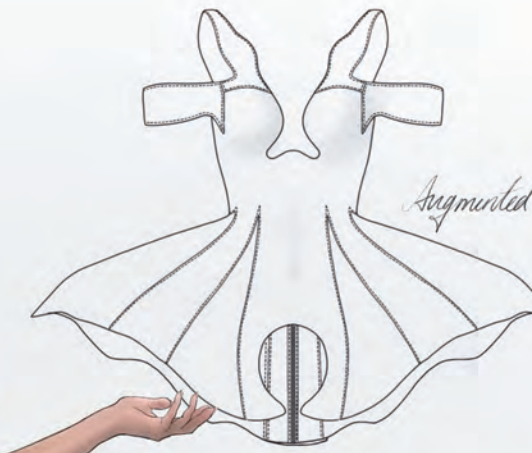


Shaped collar

Rawhem Seam



The Jersey Dress



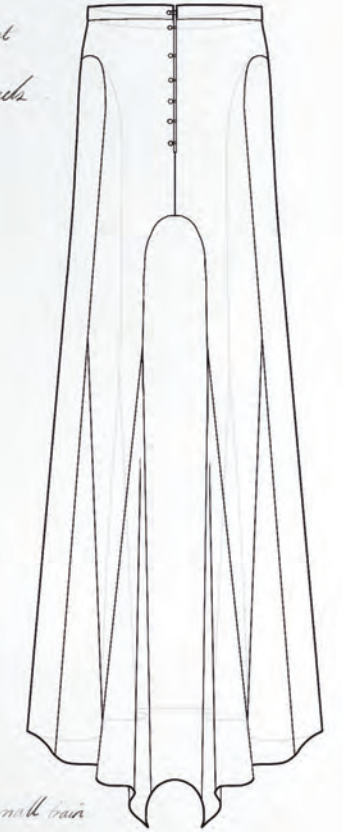
Augmented Mesh bodice



A-line shell skirt with side of hem panels

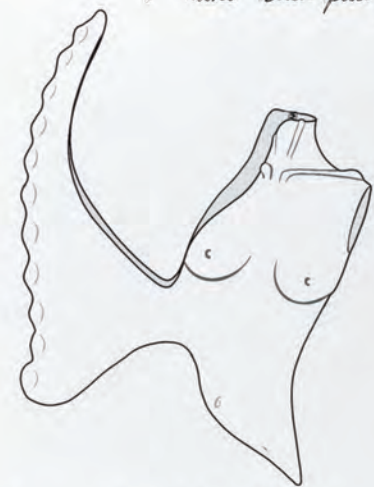


Contour Skirt Shedding Bodice



CB hem cut out with small train

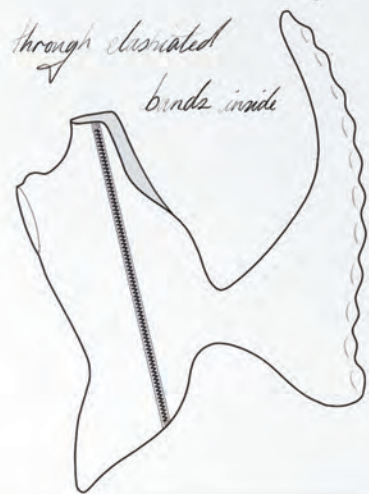
Machi bra piece & 3/4 torso



3D collar & lantern detail



Worn through associated bands inside



Sheer button closure 'shawl'

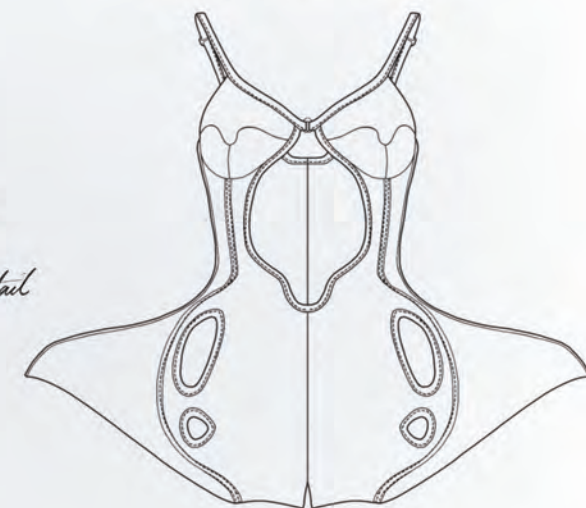
Coexisting structure and draped dress

Sheer draped dress with side securing & hidden zip closure

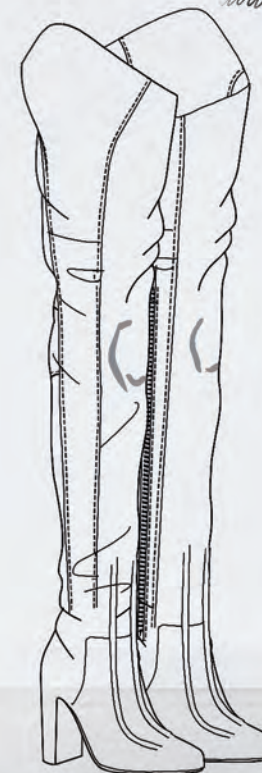


Bony Bodysuit

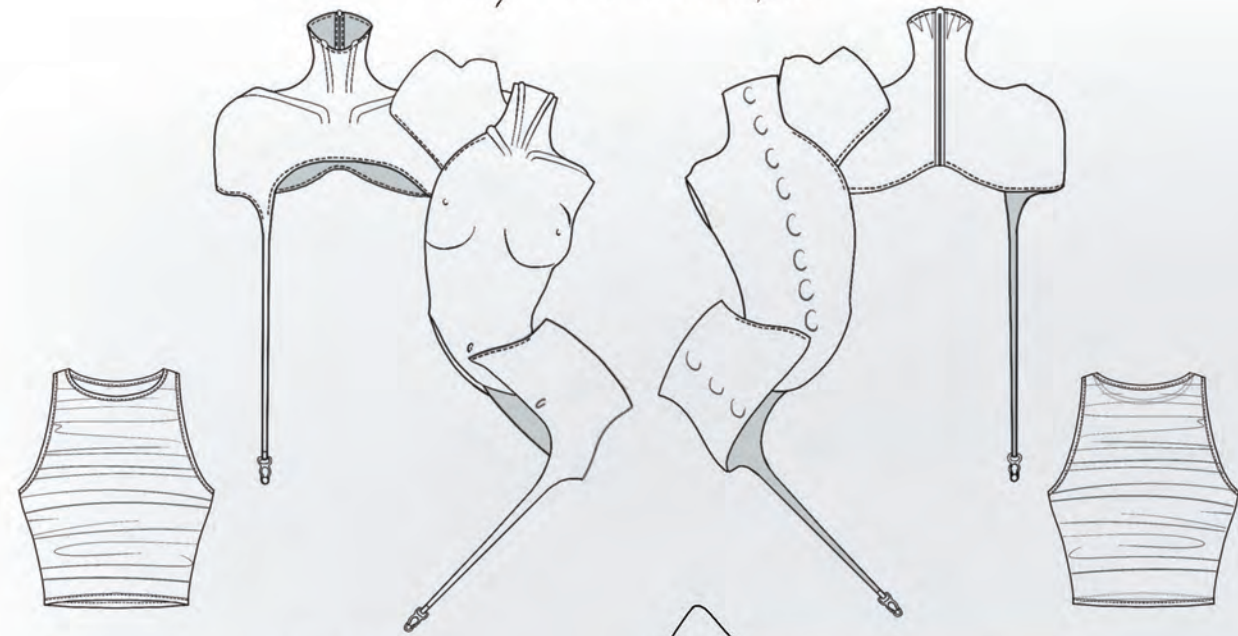
Structural bodysuit with cut-out details & Machi binding



Machi thigh High Boots with 3D detail



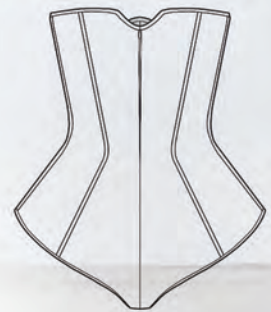
Multiple cast shoulder piece



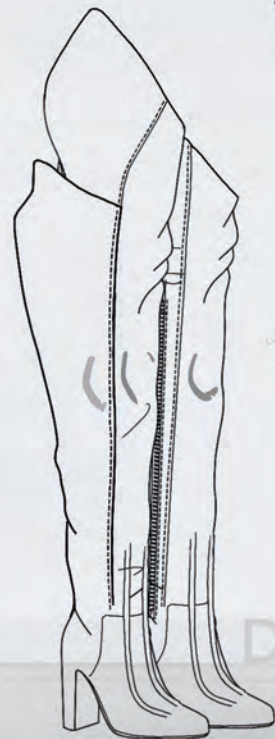
Sheer cropped vest



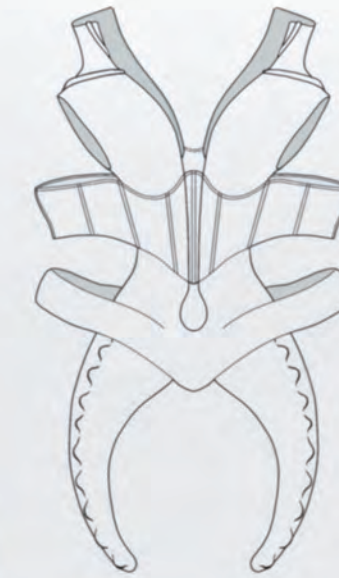
Under-bust bodice cut



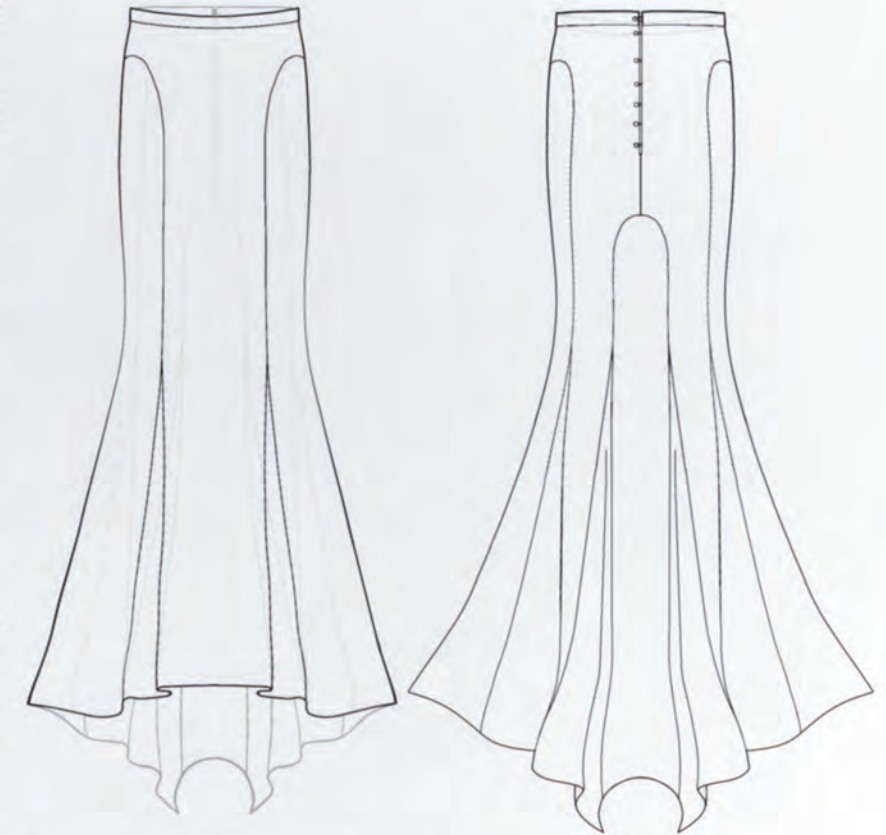
Asymmetric Maschi boots



Dissemble ensemble



Sheer skirt with side panels



Symmetrical bodice with attached under-bust corset

Masquerade Bodice and skirt

A Body In The Act Of Becoming

2024

By Meg Fletcher

How can we successfully connect with our true selves when there's social conformity to put our best selves forward outwardly? Understanding what is real or fake within the images we are fed, we're putting up a mirror to compare our lives against it. Visually, 21st-century fashion imagery displays fabricated 'perfection', an object of materialism - much like a desired garment. When we judge our physical bodies alongside our image-conscious culture, theorist Maurice Merleau-Ponty's phenomenology reminds us that the lived-in body exists beyond the body as a spectacle. The body is the medium through which we live life, experience the world, and articulate our sense of self.

This generates research examining the human form that celebrates the body's depths and beauty as well as the unrealistic restrictions of the perfect image. The silhouette reflects the natural body through a warped distortion of sheer drape that plays on shadows, volume, and surface area - antithetical to the mainstream. Flowing chiffons will allow the body to move freely with transparency whilst a camouflaging pattern covers whole garments, further distorting the eye from the true form beneath. Utilising this idea states that the relationship and experience between the wearer and their silhouette are not up for misinterpretation through the sharing of images.

Juxtaposing this is the 'classical body of official culture', which encompasses our illusions of reality into hard-shelled, over-exaggerated shapes of fabric maché, which are translated into fashion alongside corsetry, leather techniques and lingerie hardware. These pieces translate our mental cage by keeping the body elongated whilst restricting easy movement. Here the silhouette will follow the curvatures of the lived-in body, but increasing the number of restrictive body parts as the collection goes on makes for an alienated version of what we once idolised over.

The growth of these insecurities begins with the lens of a camera and ends with the lens of our eyes. Somewhere through social and cultural entanglement, we now see the composed image as truth.

This collection will express the Jekyll and Hyde effect this train of thought has on how the body is viewed. Injecting personal experiences on the topic, I will align with the brief scenario - 'The story of everything'. Continuing with the exploration of self-reflection, The Body in the Act of Becoming seeks awareness and understanding within our 21st-century bodies.

Concept



The natural curves of the body are celebrated, cast and then restricted

Camouflaging patterns hide the true form of the body

Mannequins are casted with fabric maché

A Body In The Act Of Becoming

Meg Fletcher



Northumbria University

Megan.fletcher@northumbria.ac.uk

Megfletcherdesign.com

@megfletcher_design_