

THE DOMED CITY

An Autumn/Winter 2023 Womenswear Collection which also demonstrates a masculine approach to fashion focusing on sustainable design. The collection is inspired by the future of Antarctica, drawing on the idea of Richard Buckminster Fuller's Domed Cities that would allow for a controlled climate inside.

Taking oversized silhouette inspiration from Captain Scott VS Amundsen's Race to the South Pole, the collection looks at archival garments worn by the explorers as a foundation to build on. Key features include large hoods and dramatic pockets as well as seams inspired by harnesses that were worn by the explorers and the Norwegian flag which was placed to confirm Amundsen's victory. The collection uses delicate fabrics such as silk twill and satin whilst also using heavier fabrics such as cotton drill.

Prints have been driven by research into ice patterns and the Axel Heiberg Glacier that are at risk of melting due to global warming. The colour palette of the collection is taken from one of Edward Wilson's watercolour paintings which he painted on the Terra Nova Expedition. These include cool toned greys and greens along with a pale beige and blue as accent colours.

Concentrating on a younger, powerful female muse this collection aims to sit alongside designer high end brands and rising labels such as Hamcus and Acronymn.



Nylon Ripstop Cotton Drill Crepe De Chine Satin Silk Twill Unbleached Linen

COLOUR AND FABRIC

- Axel
- 1911
- Sub-Zero
- Scott
- Amundsen
- Framheim
- Terra Nova
- Polar



This cool toned colour palette with faded hues has come from Edward Wilson's watercolour painting which he painted on Captain Scott's Terra Nova Expedition.

CONCEPT

THE DOMED CITY

An Autumn/Winter 2023 Womenswear Collection that is inspired by the future of Antarctica

**RESEARCH AND DEVELOPMENT
LOOK 1**

Photograph of smashed glass used to create screen separations



AXEL HEBBERG GLACIER

Geographical Sketch Map
N.Z. ANTARCTIC EXPEDITION 1961-1962



Only this section of the screen is masked off and used



Scott



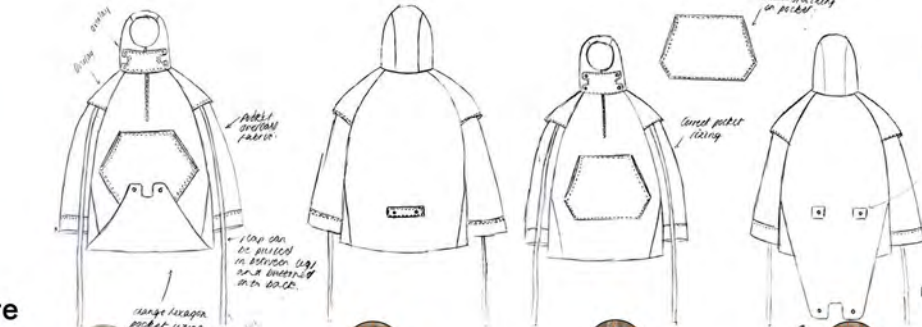
Framheim



Smock inspiration from the 1911 'Race to the South Pole'



Oversized relaxed silhouette



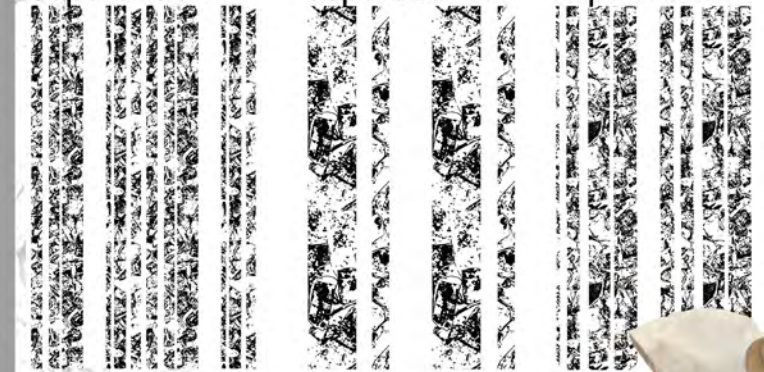
Toile



Separation 1

Separation 2

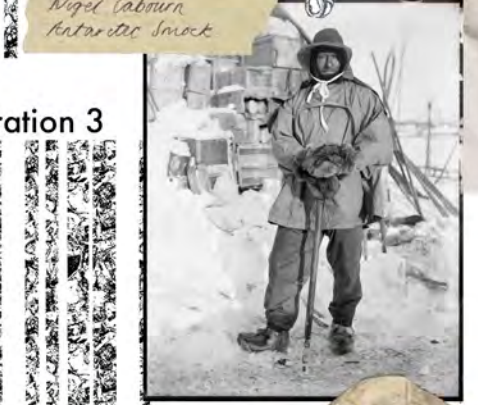
Separation 3



Posterising the photograph in greyscale to create different print layers



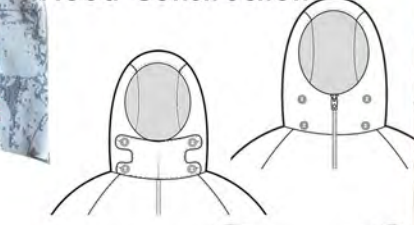
Axel 1911 Sub-zero Scott



Toile

Balaclava used by the polar expedition

Hood Construction



Zip Guard
Zip guard buttons onto smock hood with 4 buttons

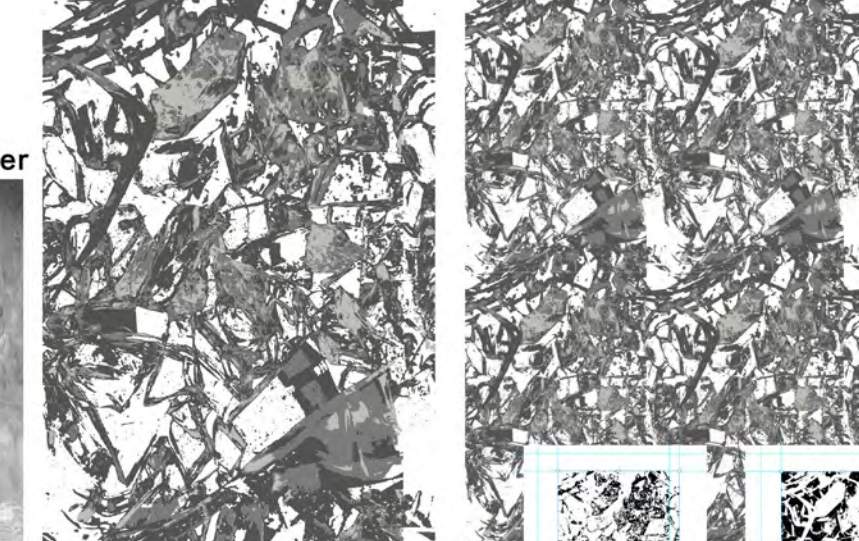


RESEARCH AND DEVELOPMENT
LOOK 2

Antarctic Glacier



Creating a repeat print



Hand painting/Heat transfer rib cuffs



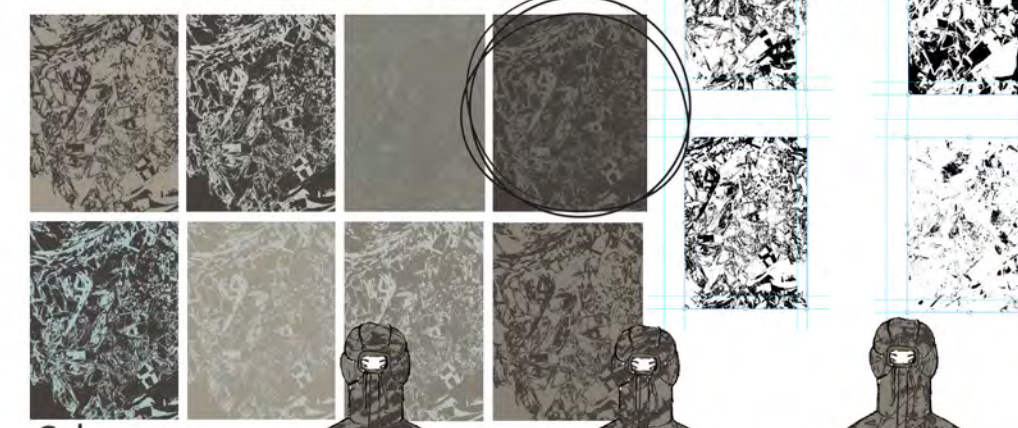
Hamcus A/W



Captain Scott



Scale



Colourways



Scale of the print on the garment



Terra Nova



Mouflage on the stand



Trouser print scale



Loose fitting trousers



Unbleached Linen



Silk Twill



RESEARCH AND DEVELOPMENT
LOOK 4

Axel Heiberg Glacier

Photographs of smashed glass that are turned into a print

Turning each layer into a repeat print

Posterising the photographs in greyscale to separate the image into layers

Sampling different scales

Tom Crean Antarctic Explorer

First Toile

Second Toile

Quilting Samples

Inspired by Military trouser liners

Scott Polar Research Institute Inspiration for quilting design

Toile

Colourways

The collage illustrates the design process for 'Look 4'. It begins with source images: a photograph of Axel Heiberg Glacier and a photograph of Tom Crean, an Antarctic explorer. These are processed into greyscale layers and smashed glass patterns. The process involves sampling different scales and creating quilting samples. The design is inspired by military trouser liners and the Scott Polar Research Institute. The final stage shows the creation of two toiles (prototypes) and several colorway options for the garment.



Look 1



Quarter Zip Smock
Cotton Drill/Nylon Ripstop

Look 2

Trousers
Cotton Drill/Nylon Ripstop



Puffer Coat
Silk Twill/Jersey Rib

Look 3

Trousers
Unbleached Linen



Ruched Trousers
Satin



Jacket
Cotton Drill/Crepe de Chine

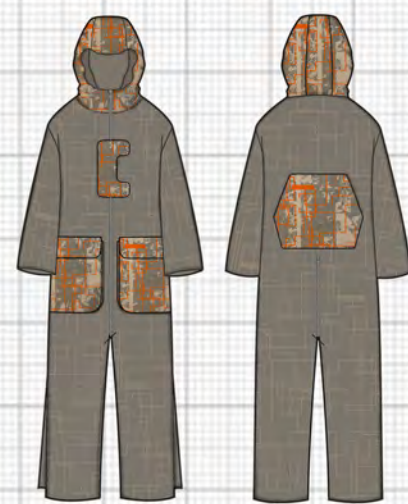
Look 4



Hooded Cape
Silk Twill

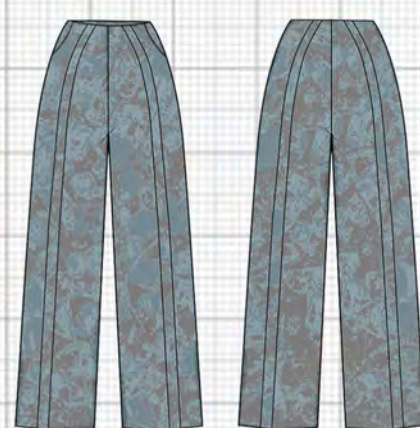
Look 5

Quilted Shorts
Unbleached Linen



Boiler Suit
Cotton Drill/Nylon Ripstop

Look 6



Trousers
Cotton Drill



Smock
Cotton Drill

