



SHADOW PUPPET LOVE

These series tell my story. I have always loved Chinese traditional culture and wanted to break the feudal thoughts in China. Through personal love stories combined with the collision of Chinese culture and Western clothing, the author interprets the meaning of love and realizes a hope that cannot be realized in today's China. Criticizing China for its unfair treatment of gay people.

WENYAN LIAO



MUSE

Ruby Rose Langenheim
Occupation: Model and Actress

COLOUR BOARD



皮影人物分解

Shadow decomposition structure



《西厢记》
及影戏婚礼人物

THE COSTUME SHAPE OF SHADOW
NARROW. AT THE TOP WIDE AT THE
BOTTOM

CHINESE WEDDING DRESS RESEARCH



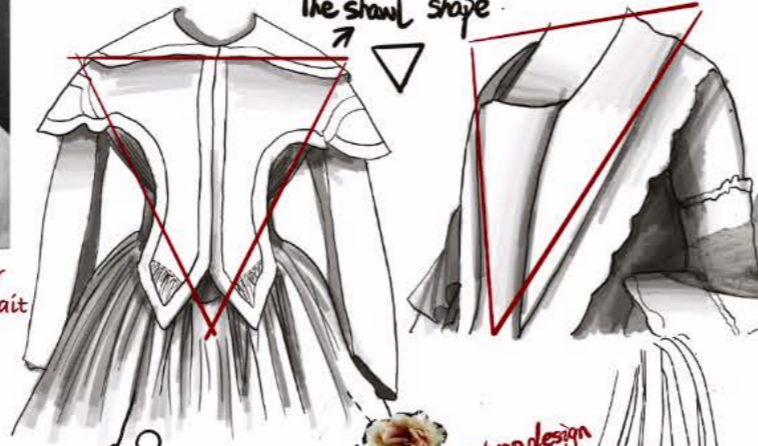
WESTERN WEDDING DRESS RESEARCH



German painter Franz Xavier Wendelhalter painted this portrait of Queen Victoria in 1847

Western Wedding Customs

The shawl shape



collar

shoulder

lace

strap design

shape

A combination of cape and veil designs

The similarity

The headress is combined with the veil

dress



Design of fold

organze yarn

Design of fold

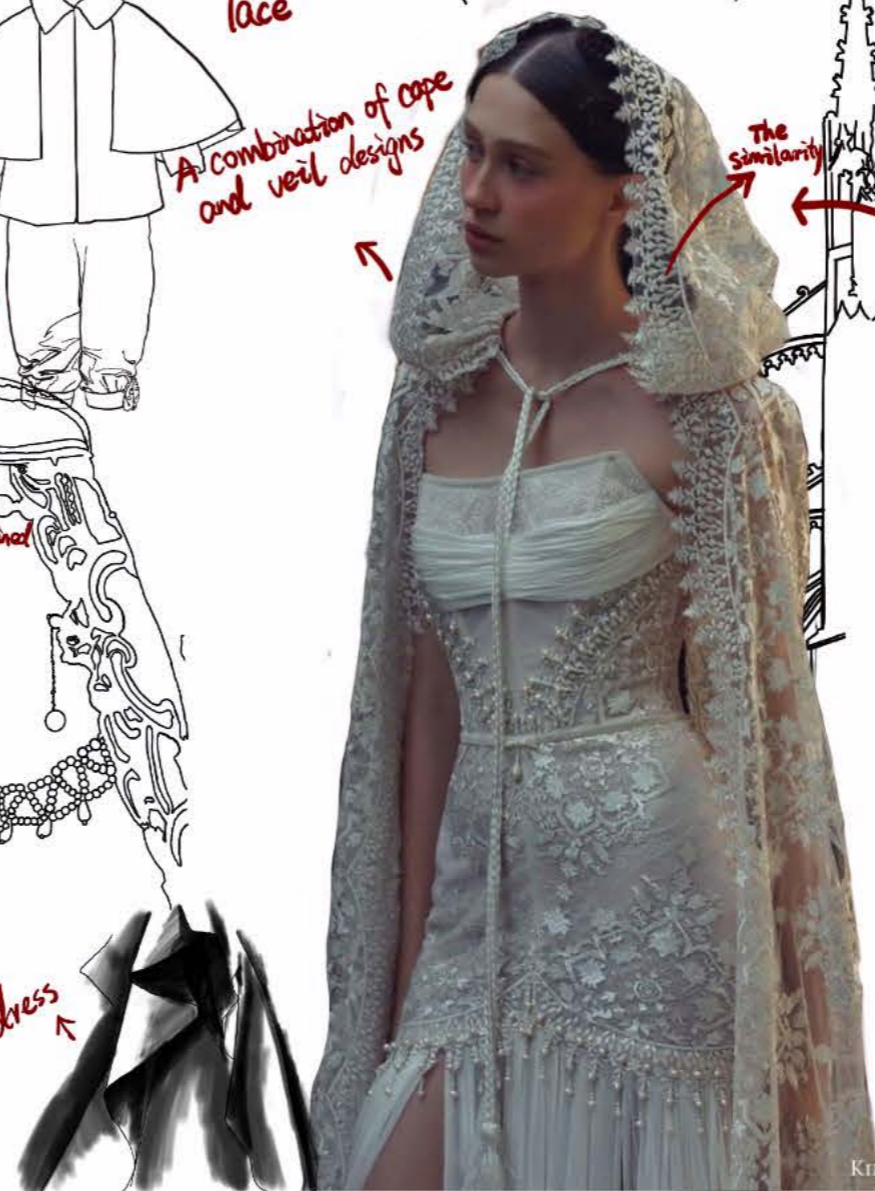
Design of fold organze yarn

Detail of dress

Bottom

lace

Fold



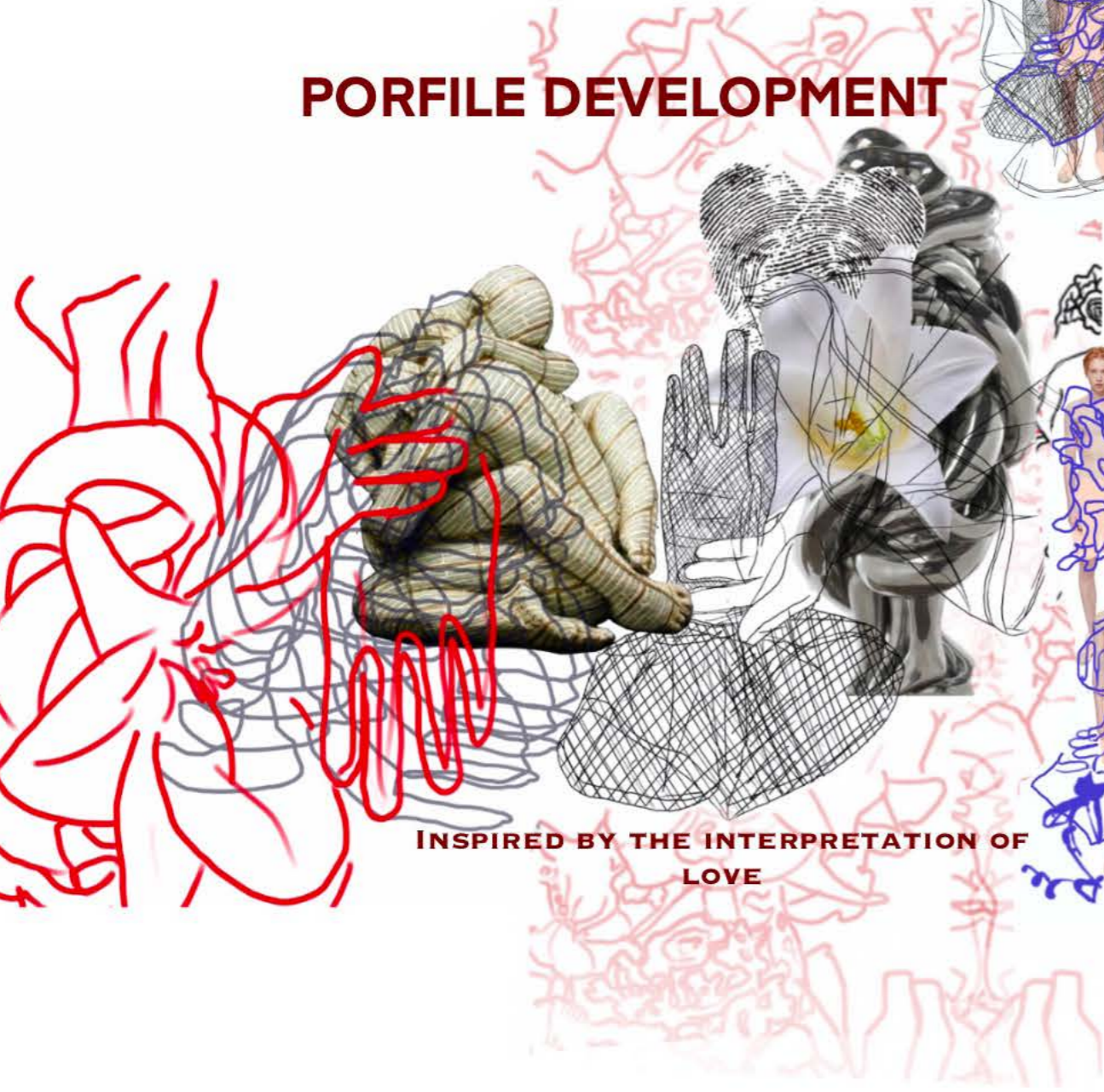
Through investigation and collision, a more prominent style combining Chinese and Western



unisex style evening wear is relatively rare in the market. The style will combine the characteristics of female evening dress and male dress.

PORFILE DEVELOPMENT

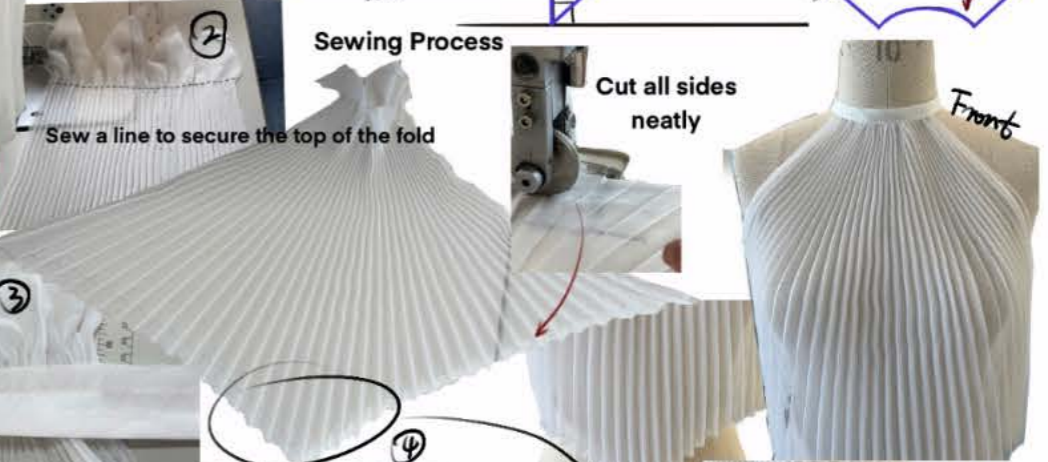
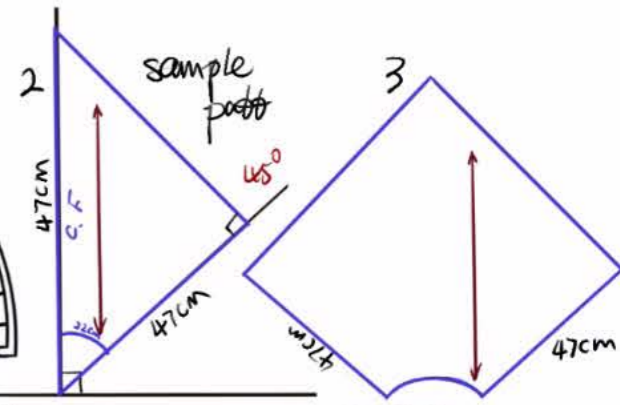
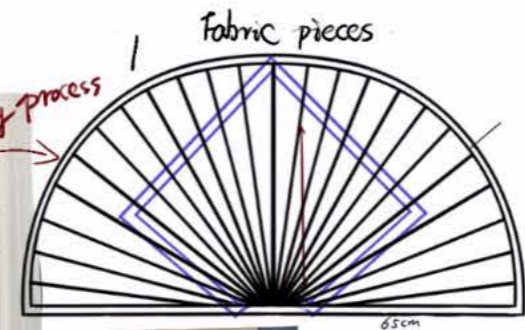
EXTRACT THE OUTLINE
FROM THE CALLIGRAPHY



INSPIRED BY THE INTERPRETATION OF
LOVE



SPECIAL FBRC DEVELOPMENT

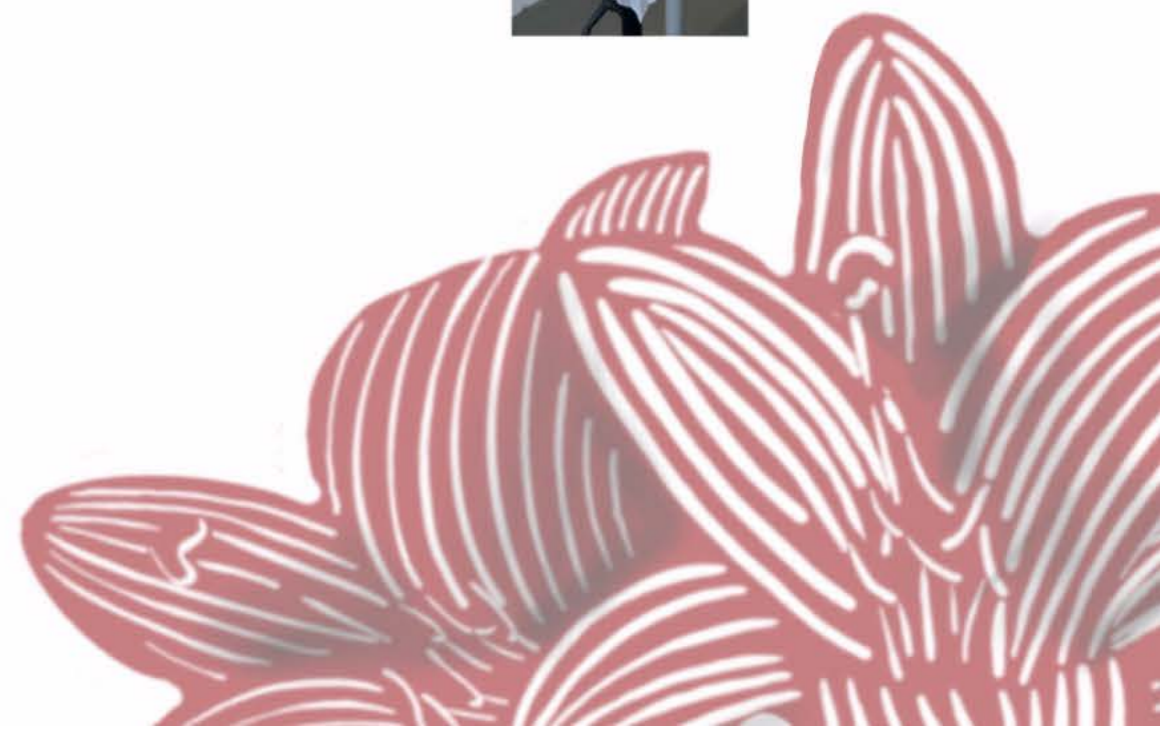


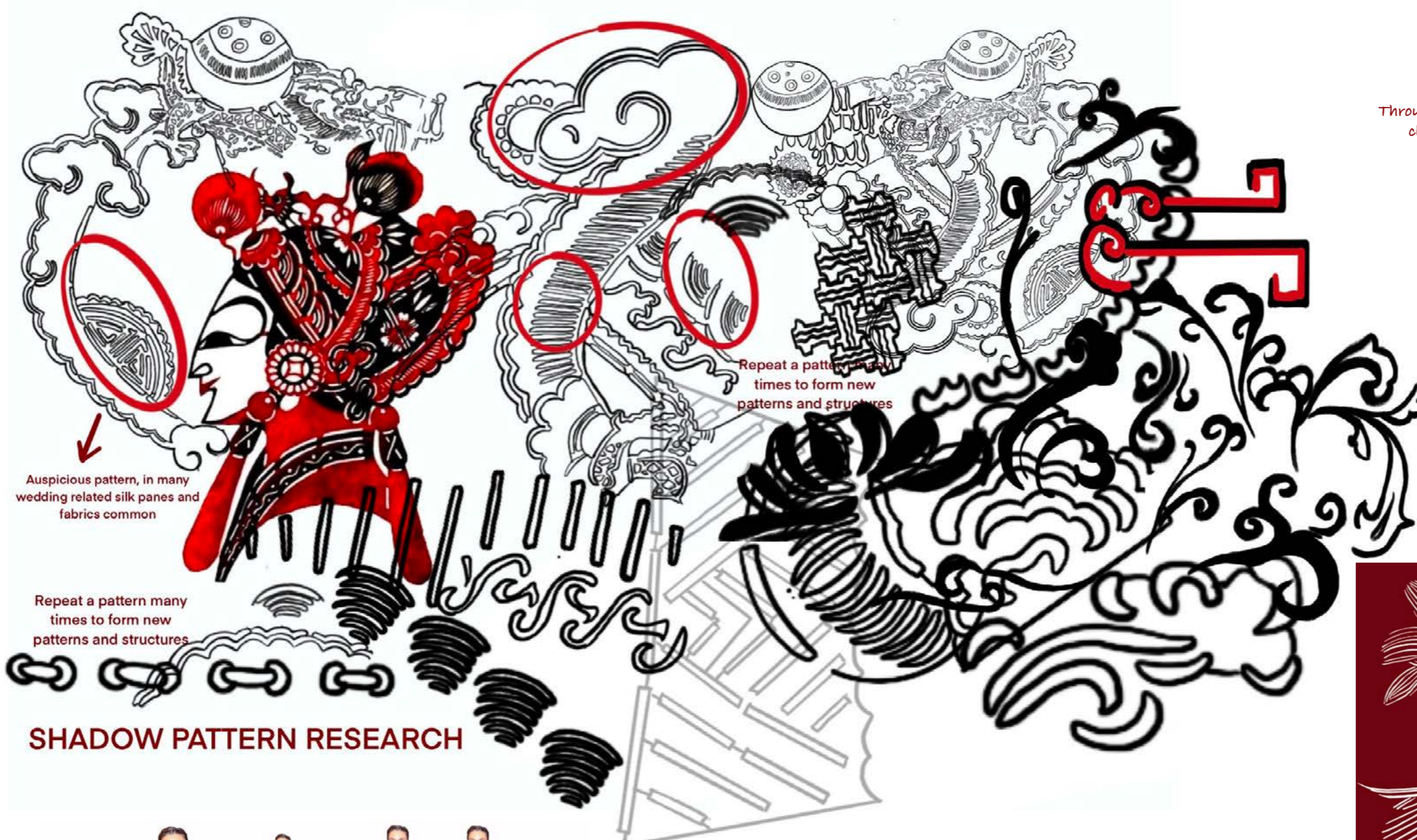
Soft and delicate fabrics, such as organza and silk, are used in casual style clothing

Pleats are often used in Western women's clothing, such as casual slip dresses or gowns.

5 Turn the seam edge of the binding to 4 parts of 1cm each, and then extend the edge to sew a line at 1cm

Cut off any excess inside





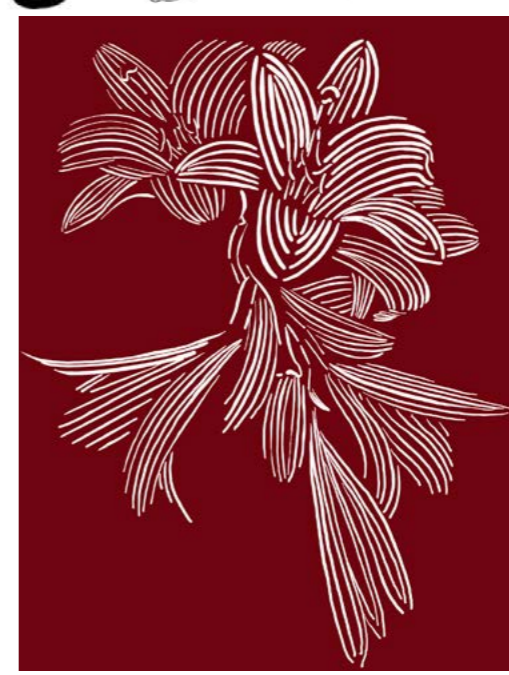
Auspicious pattern, in many wedding related silk panes and fabrics common

Repeat a pattern many times to form new patterns and structures

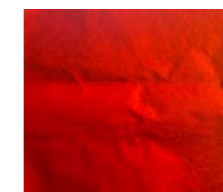
Repeat a pattern many times to form new patterns and structures

SHADOW PATTERN RESEARCH

Through the study of patterns, the details of clothing are designed and processed



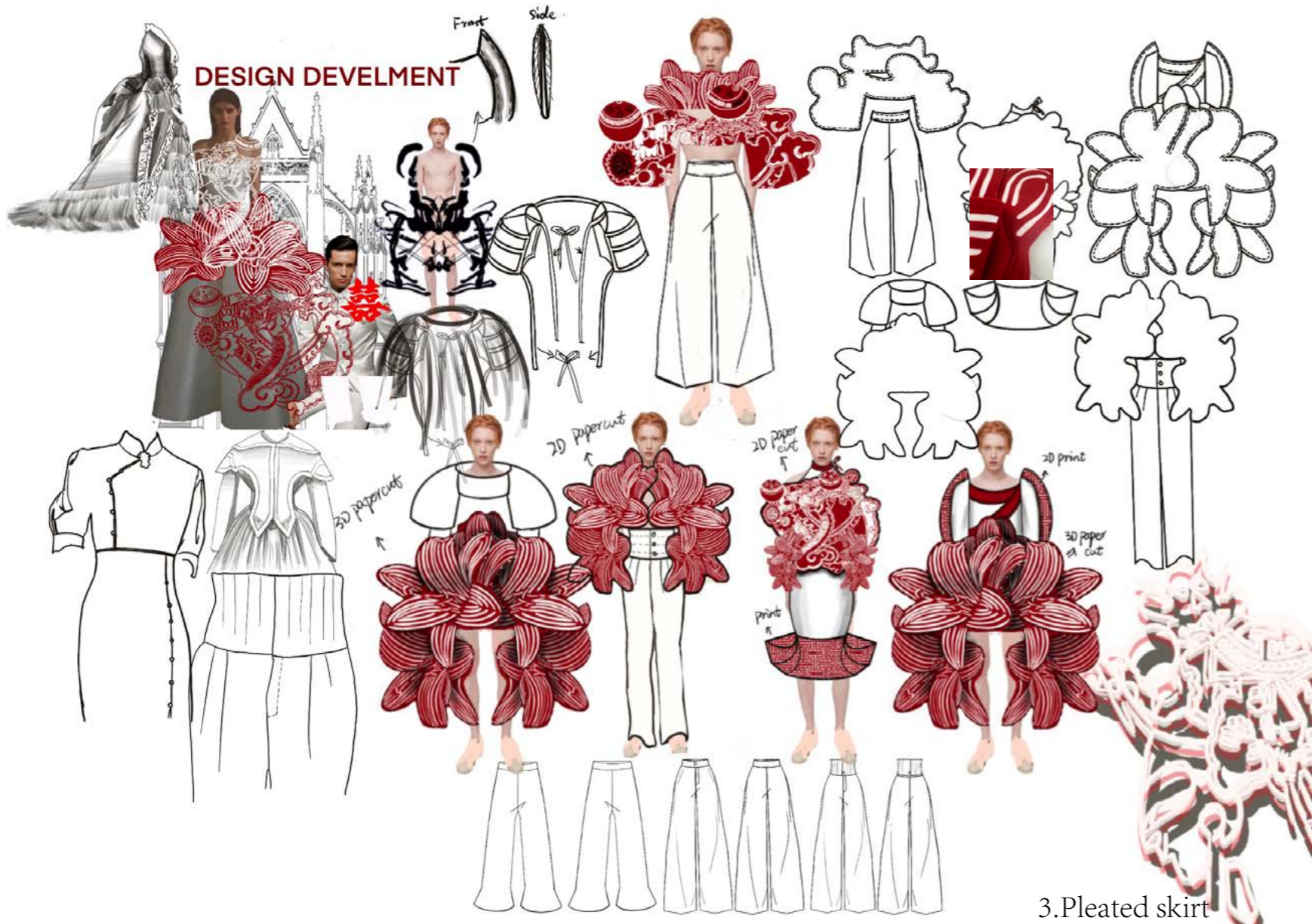
reformation is carried out according to the techniques of summarizing shadow puppet drawing.



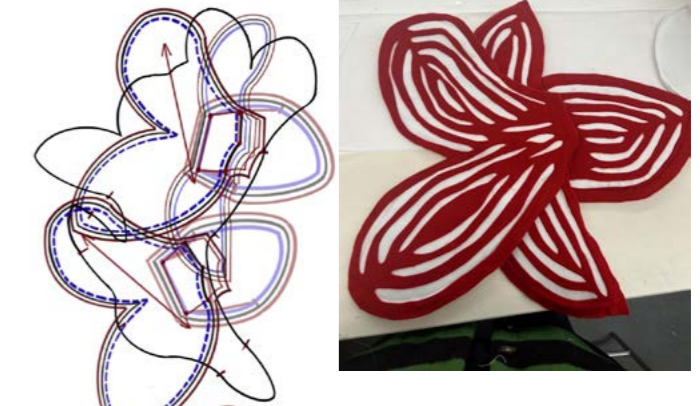
SELF ADHESIVE FELT ROLL 5m



DESIGN DEVELOPMENT



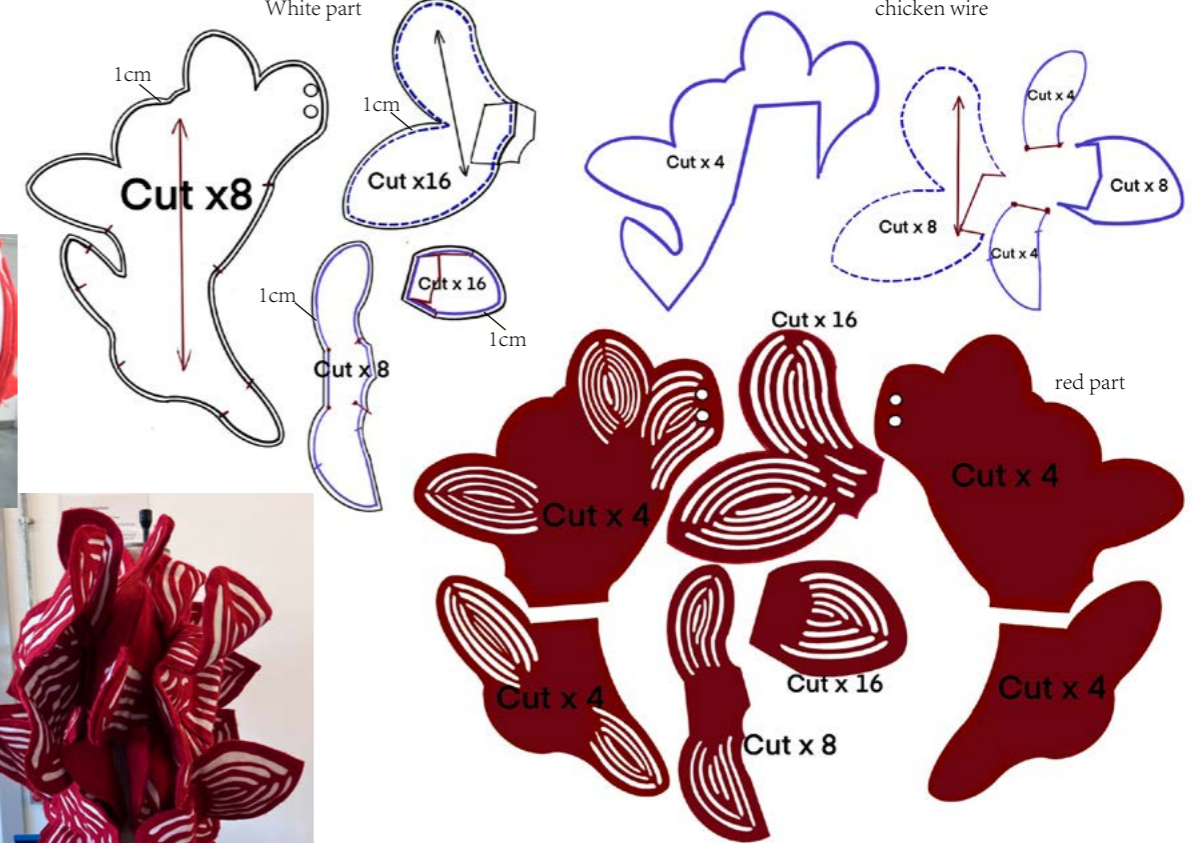
DEVELOPMENT PROCESS



White part

chicken wire

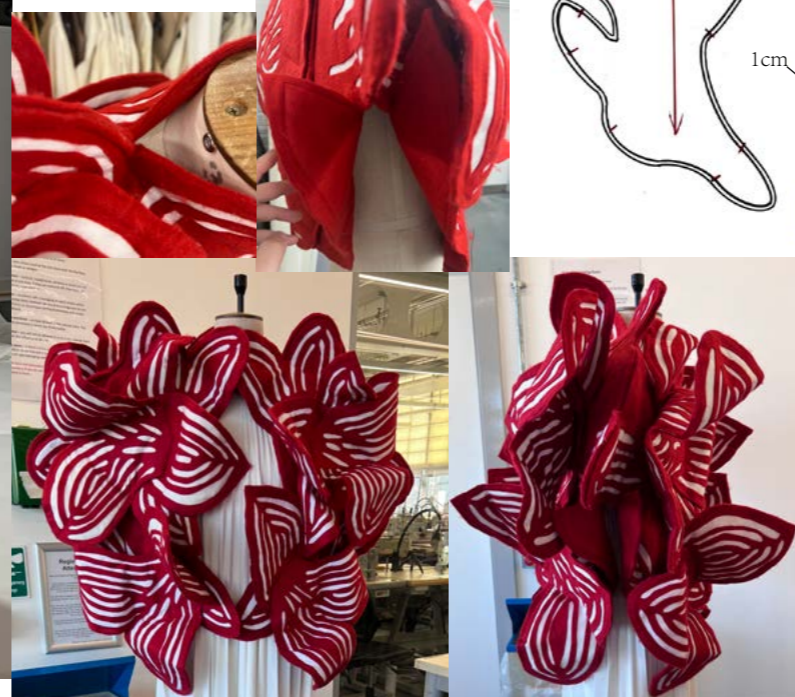
- 3. Pleated skirt
- Pating cutting
- Folding effect display



FRONT

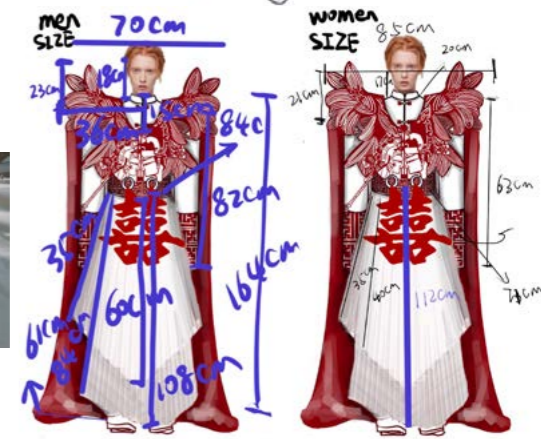
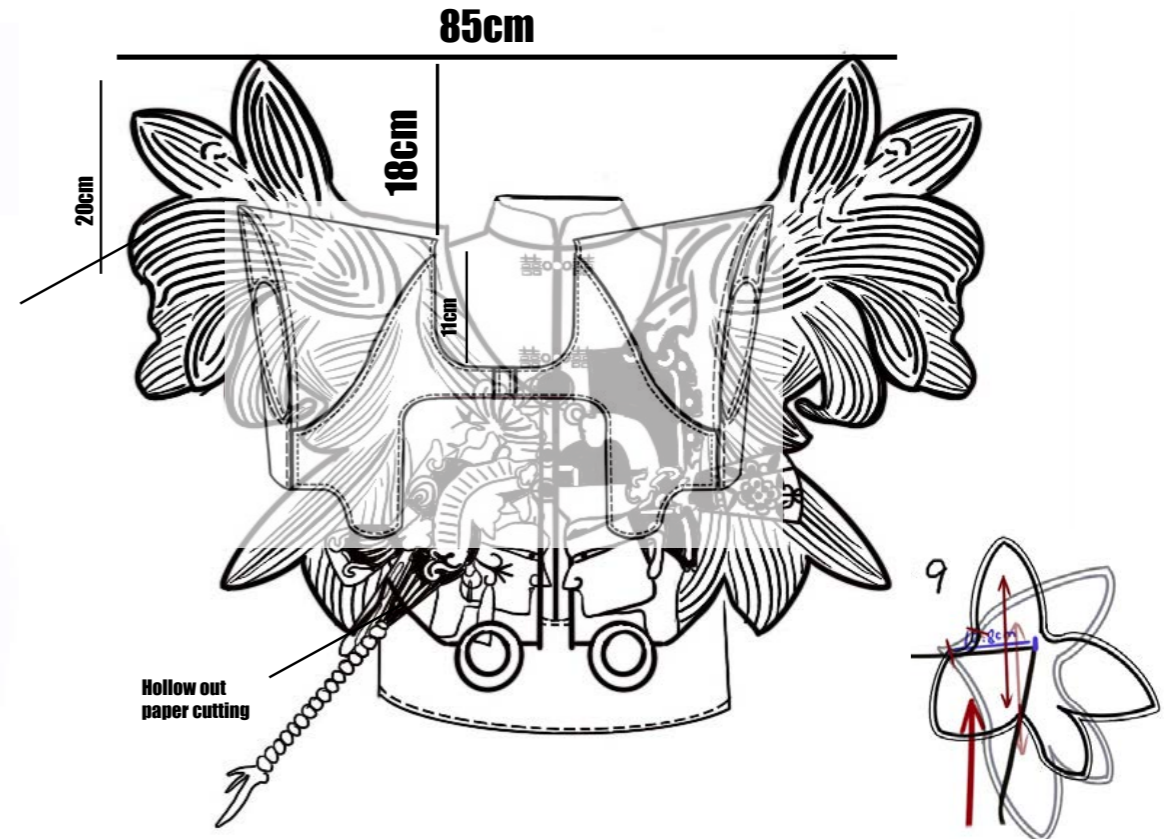
SIDE

BACK



Process making attempt

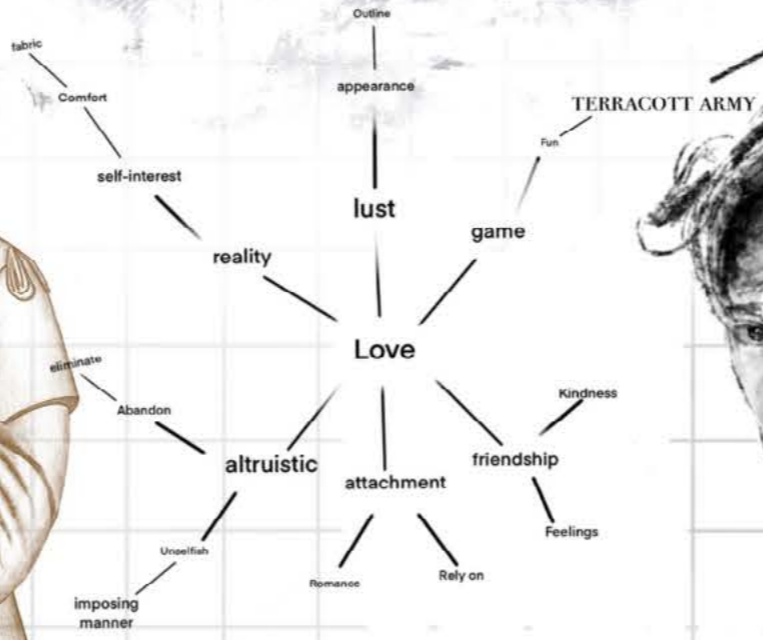
DESIGN DEVELOPMENT







神子



EVERLASTING LOVE

In the first emperors of China (Qin Dynasty: Qin Shi Huang) he was looking for a way to live forever. He built a dungeon and made clay figures of soldiers, weapons and horses to keep him company forever. Terracotta Warriors: The idea of immortality in form. There is also a legend about a general who fell in love with a princess who was about to marry the First emperor of Qin. The two were given herbs for immortality by accident, and they were eventually buried as part of the emperors tomb. The love story of two people who have been granted eternal life and protect each other in the tomb truly realizes the eternal love.

MUSE



Hu Ge is a performance artist whose works revolve around ancient Chinese legends and the history of China's War of Resistance against Japanese aggression. He is also the popular General Meng Yi (myth), and I want to continue this story.

COLOR BOARD

Blue Azurite

Green Malachite

Sand Brown

Midnight Blue

Stone gray

Cinnabar red

Khaki

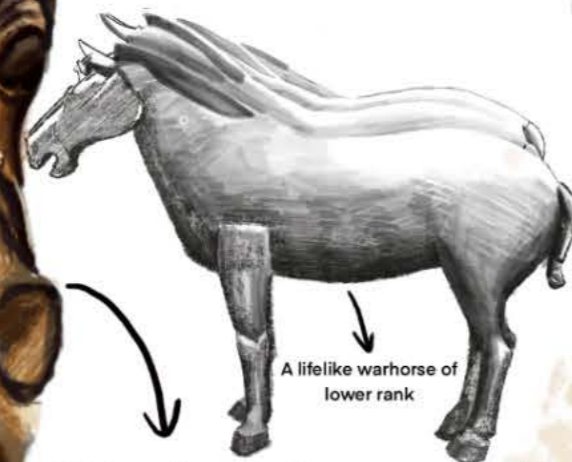
Carbon black

Gainsboro

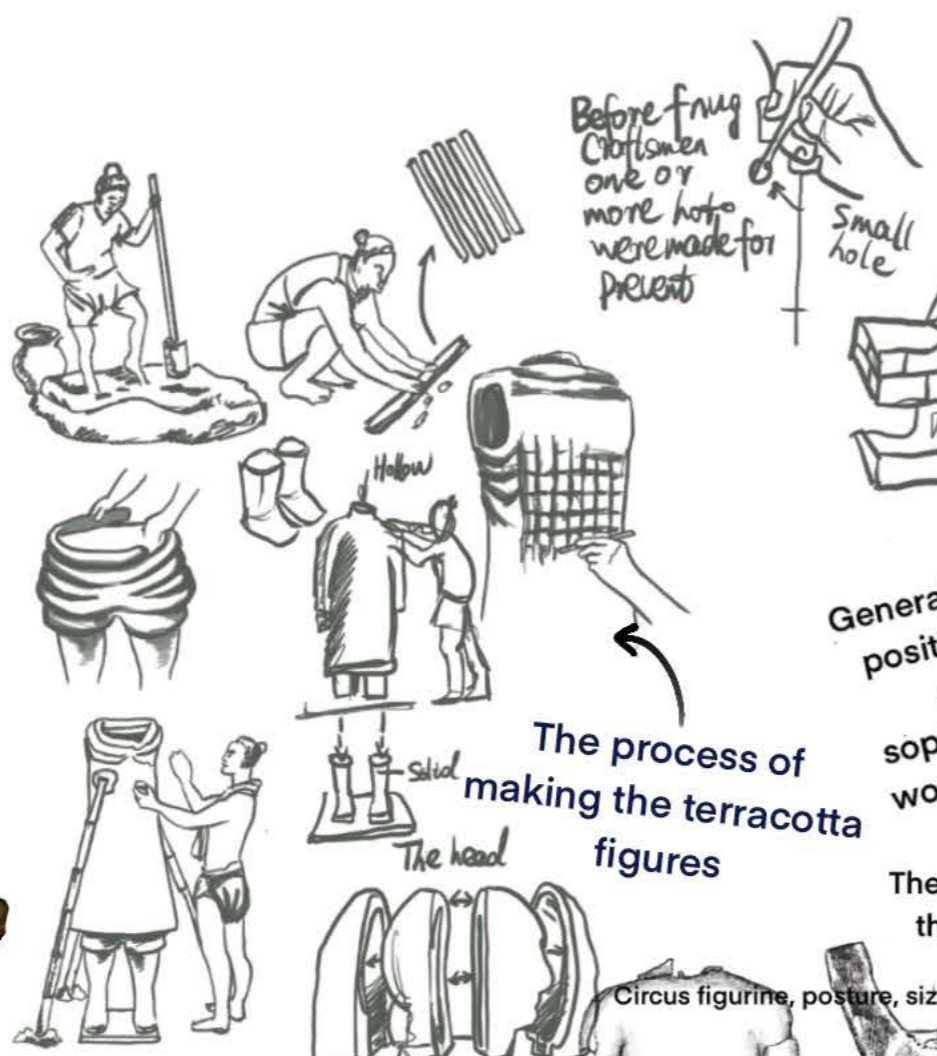




Higher class warhorses, same height, same build. The details are also carved with elaborate patterns and saddles



A lifelike warhorse of lower rank



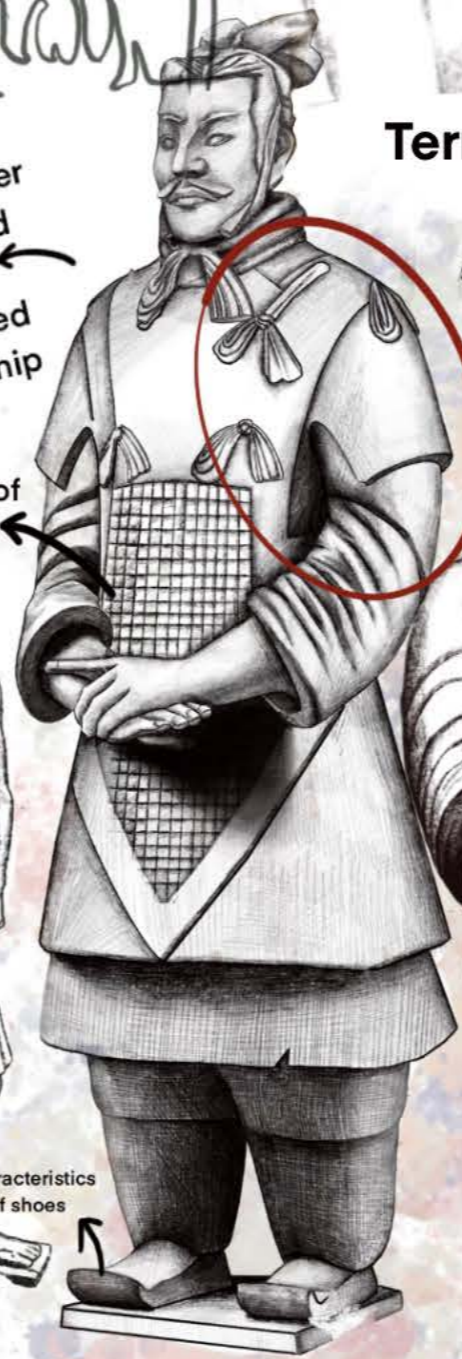
The process of making the terracotta figures

Generals, higher positions and more sophisticated workmanship

The details of the armor

Circus figurine, posture, size, details

Characteristics of shoes



Terracotta Warriors Research

Structure analysis of Terracotta Warriors and horses

Soldier front coat detail

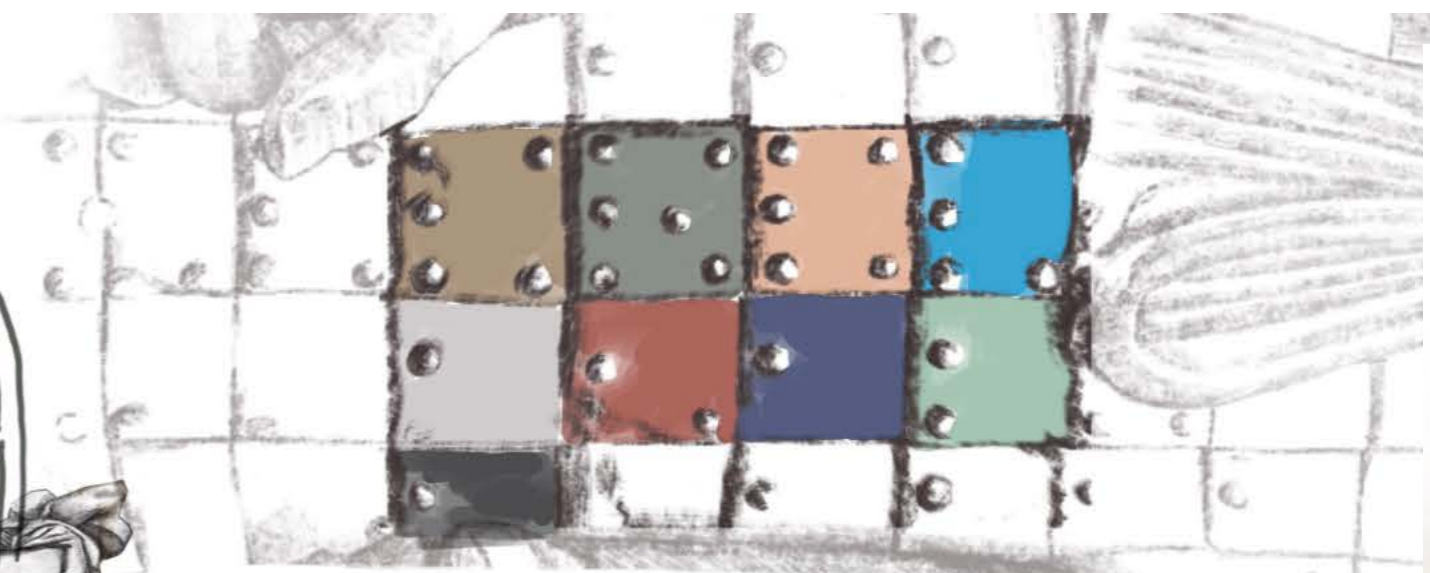
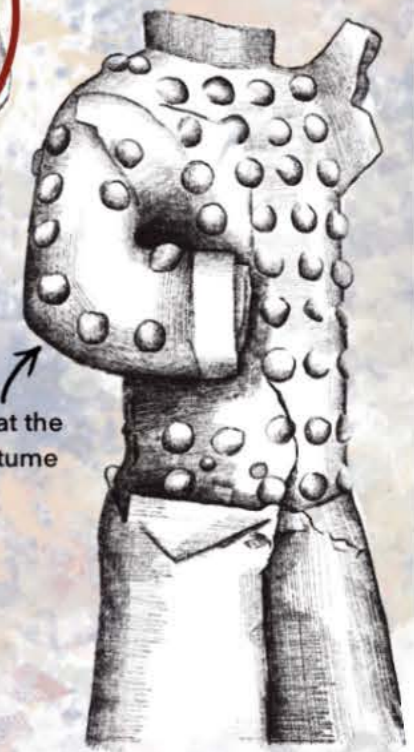


Soldier back coat detail



The uniqueness of each terracotta warrior

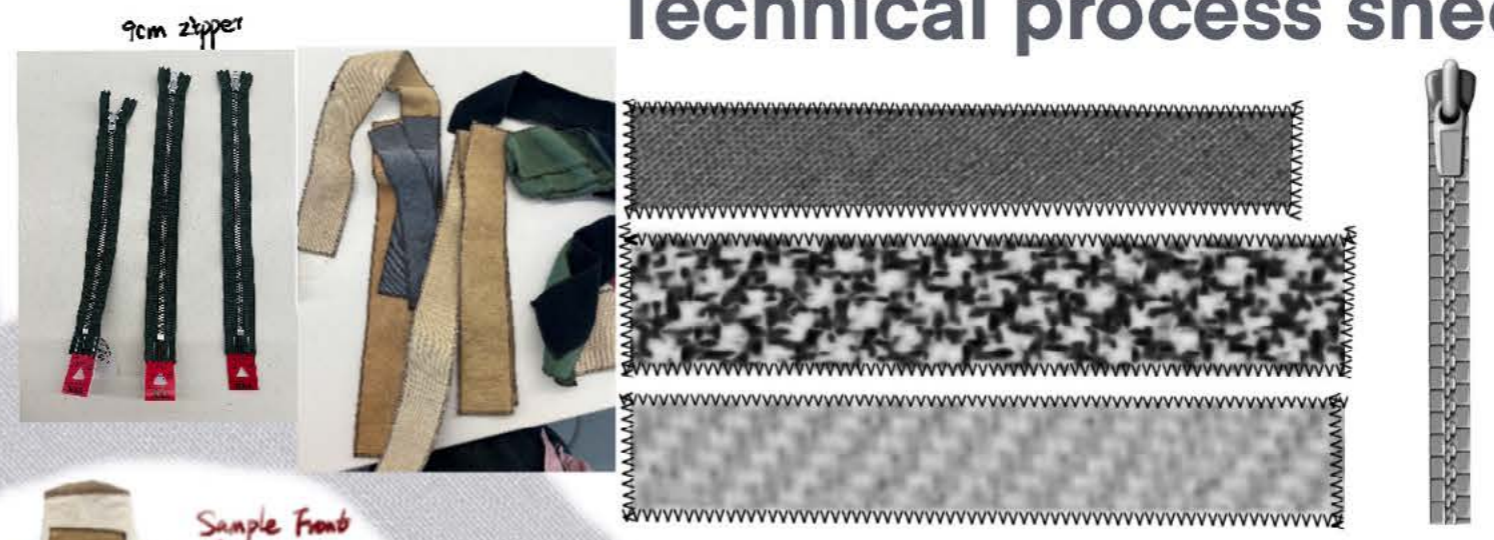
The terracotta warriors at the circus, very unique costume



TERRACOTTA WARRIORS AND HORSES RESEARCH

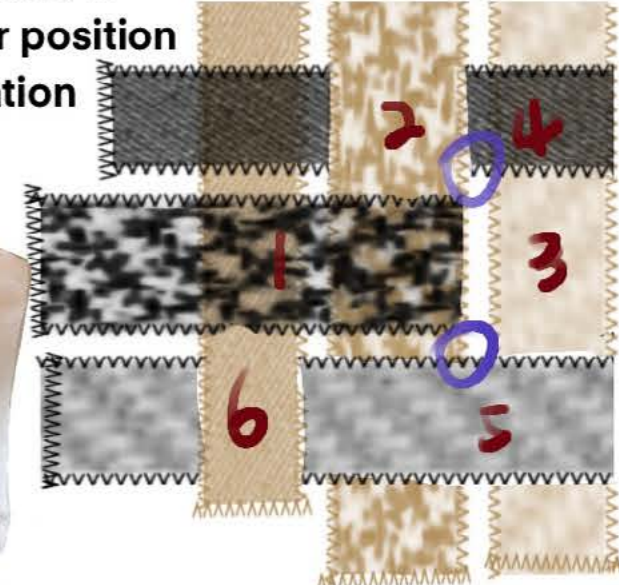


Technical process sheet

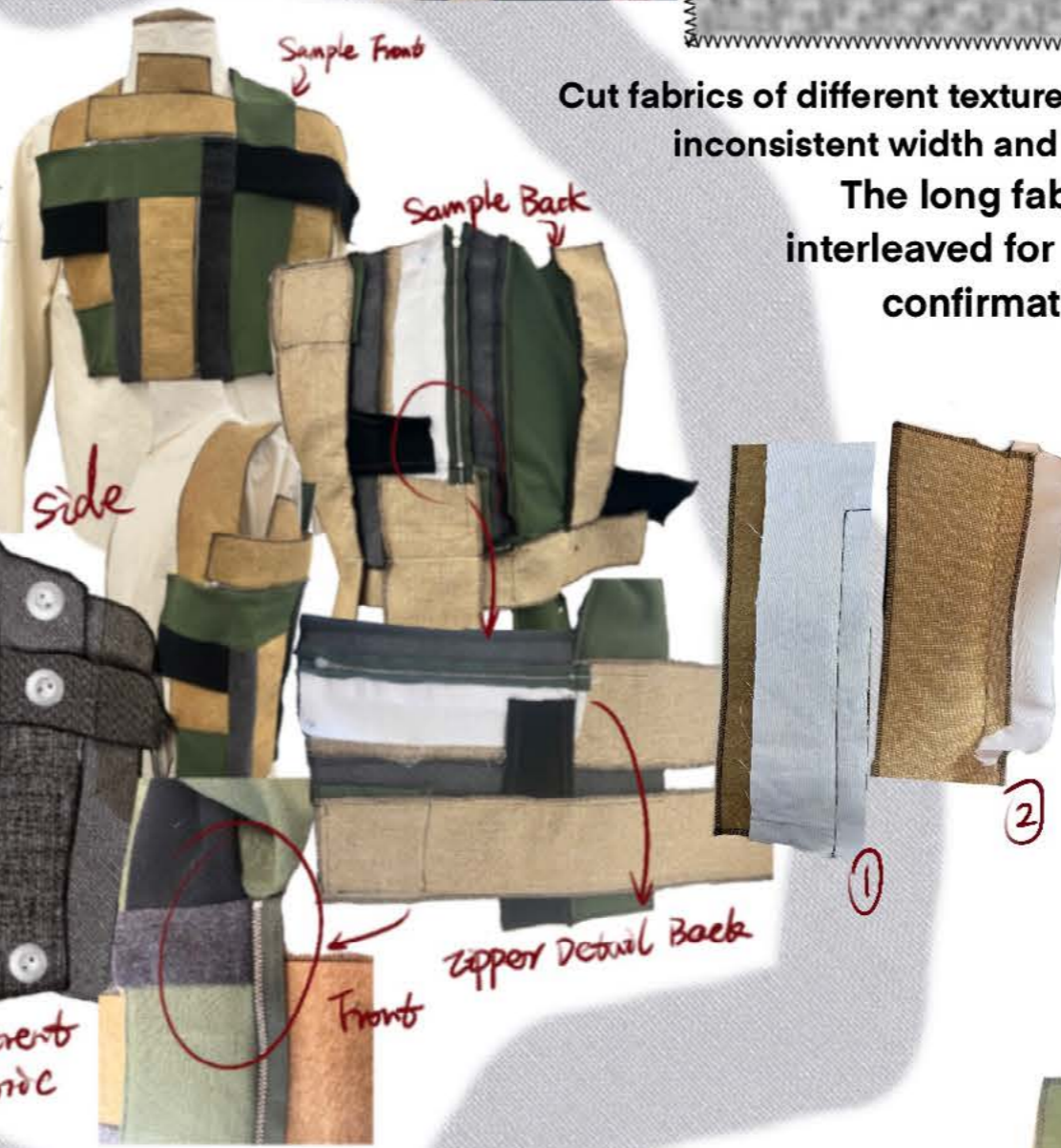


Cut fabrics of different textures and colors into long strips of inconsistent width and length for edge sealing

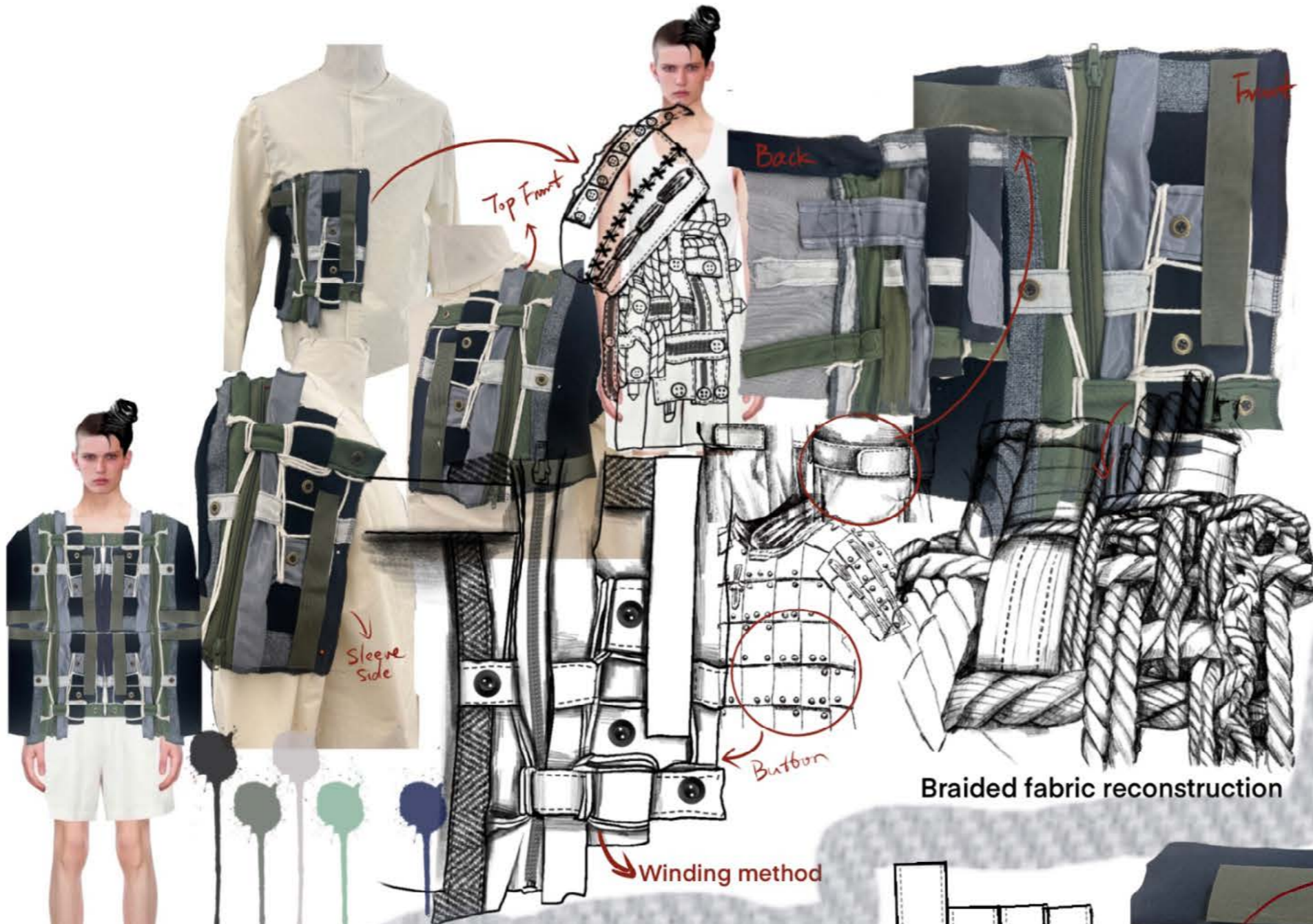
The long fabric is interleaved for position confirmation



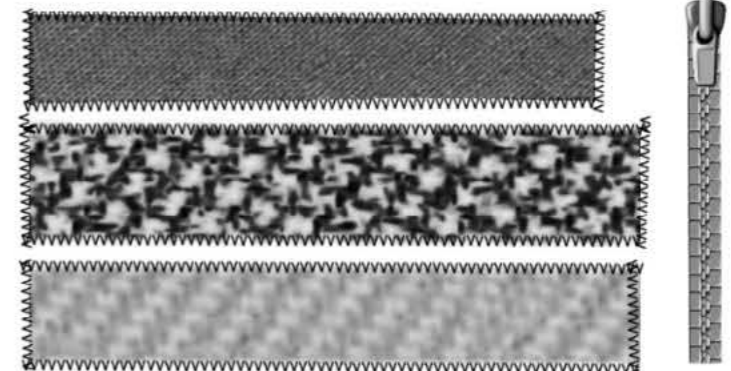
② All you have to do is find a reference point and then sew it up and weave it down the sides



Conclusion: Although the fabric reconstruction knitting needs to complete the pattern cutting of the whole garment, the Pattern Cutting should be carried out according to the arrangement of fabric weaving according to the cut pieces



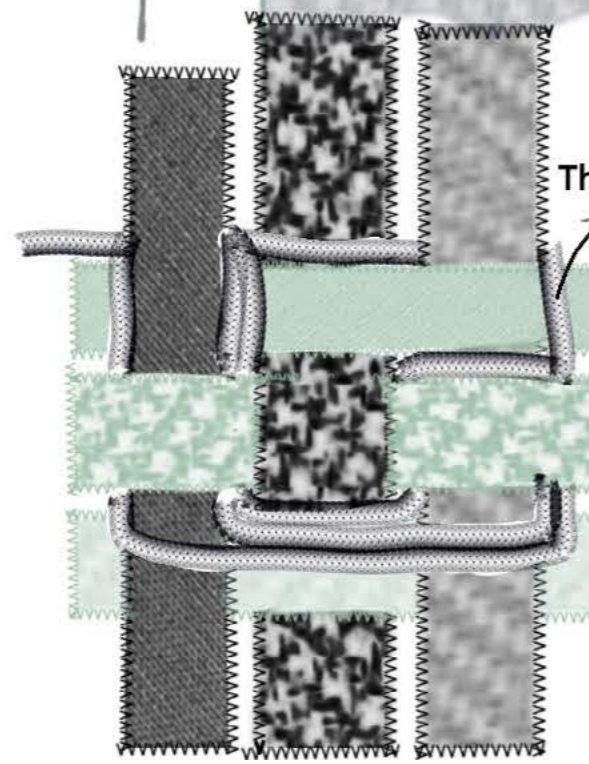
Technical process sheet



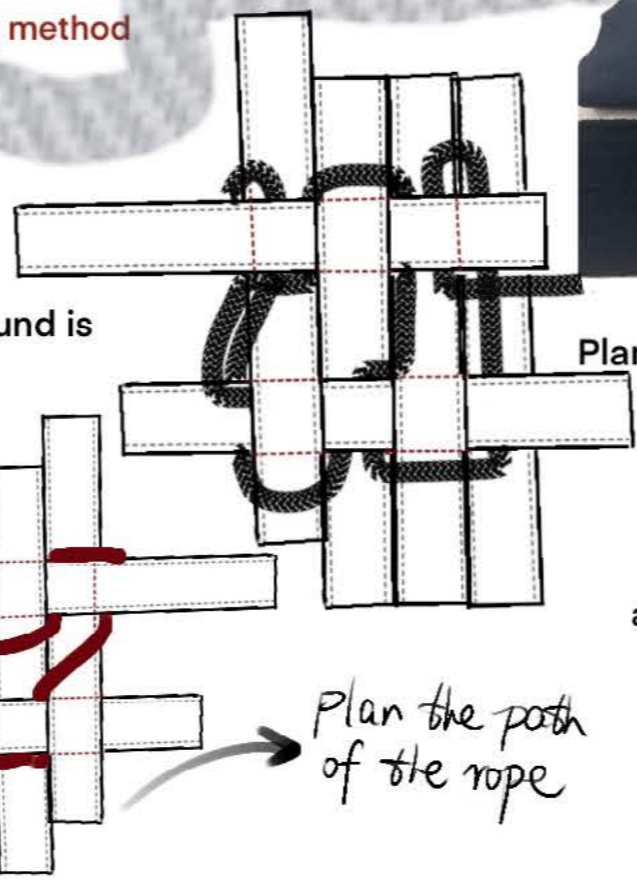
Cut fabrics of different textures and colors into long strips of inconsistent width and length for edge sealing



It is necessary to consider the direction of the rope when stitching, and hollow out in the middle of the part when weaving



The way it's wound is random



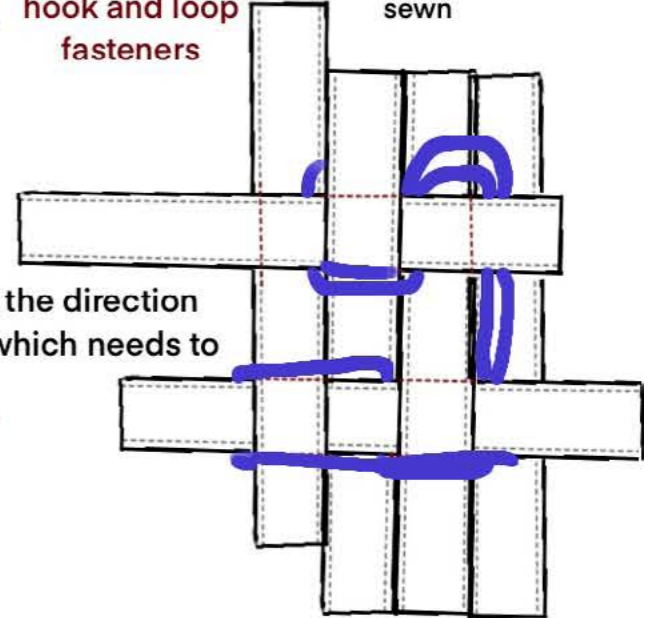
Plan the path of the rope

Plan the path of the rope

After the 3 fabric strips are stitched together, the direction and position of the rope need to be planned, which needs to be planned at the same time

hook and loop fasteners

The fabric is knitted and the buttons are finally sewn



A.C.W.*

MARKETING RESEARCH



Binding mode



The same feature as the original military pants

Pocket and strap design



Characteristics of tailoring



Some basic functional military equipment



ORIGINAL ARMY RESEARCH



The original military attire consisted mostly of jackets and shirts

Changes and common characteristics from the original military uniform to modern times



The similar structure in the trousers resembles the terracotta warriors

The characteristics of the binding

JACKET DEVELOPMENT

The outline comes from the pattern of weapons.
 Fabric woven strip of pack.
 Interlace fabric with strips of padded cotton.
 Abroad strip.
 Original army jacket profile.
 The cut in stripe.
 strip braided.
 A thin strip.
 Lacing characteristics.

HOODLE DEVELOPMENT

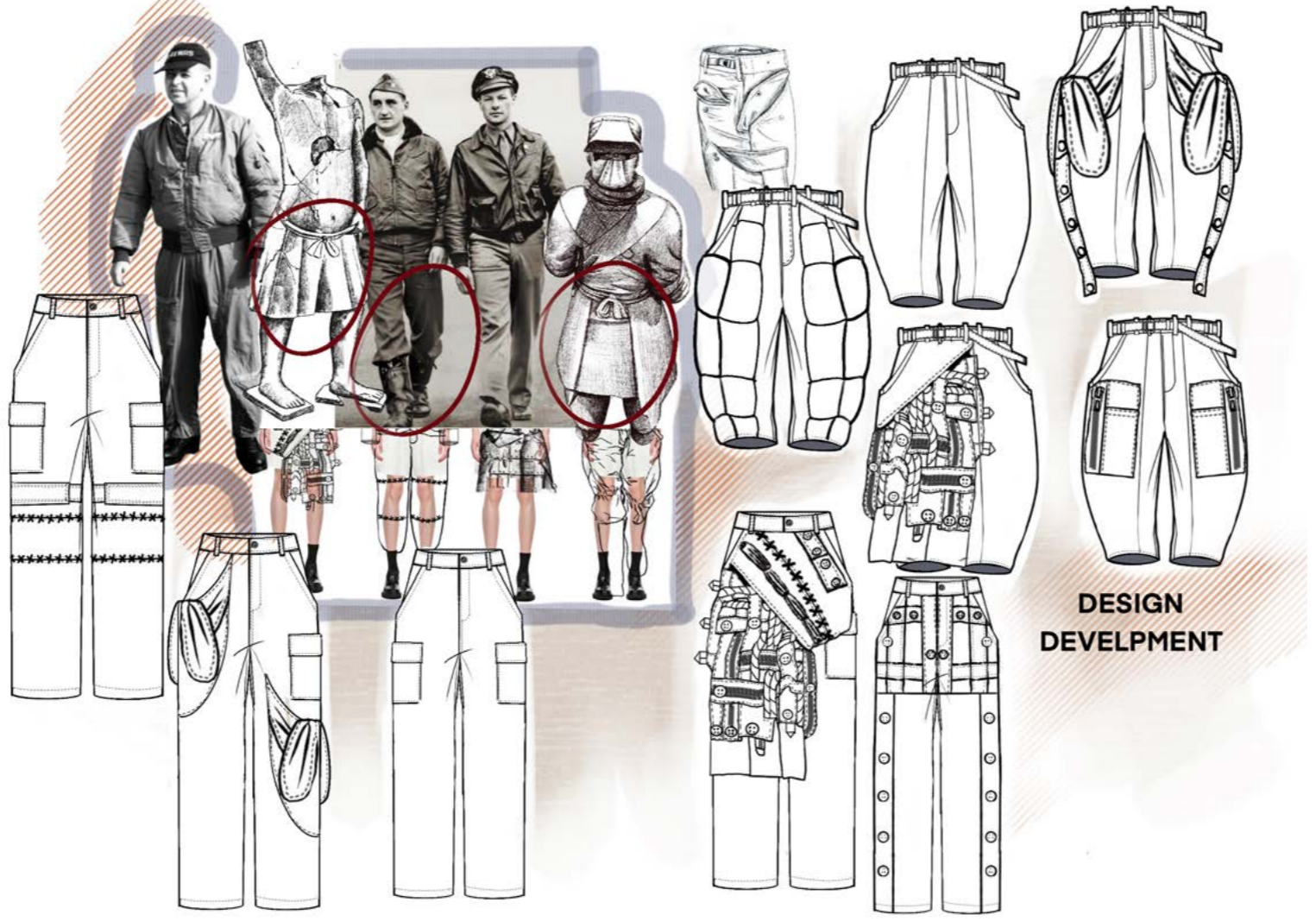
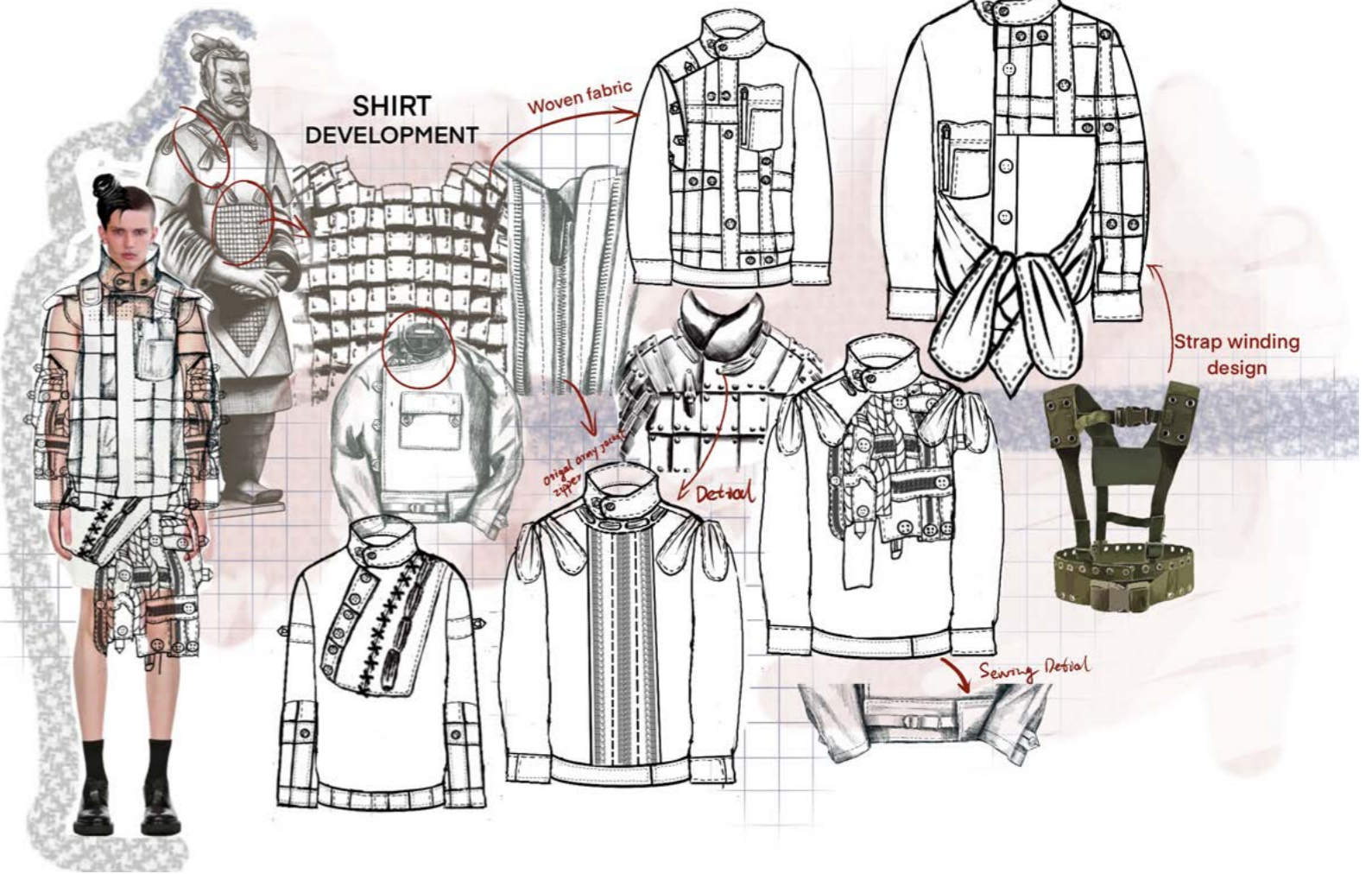
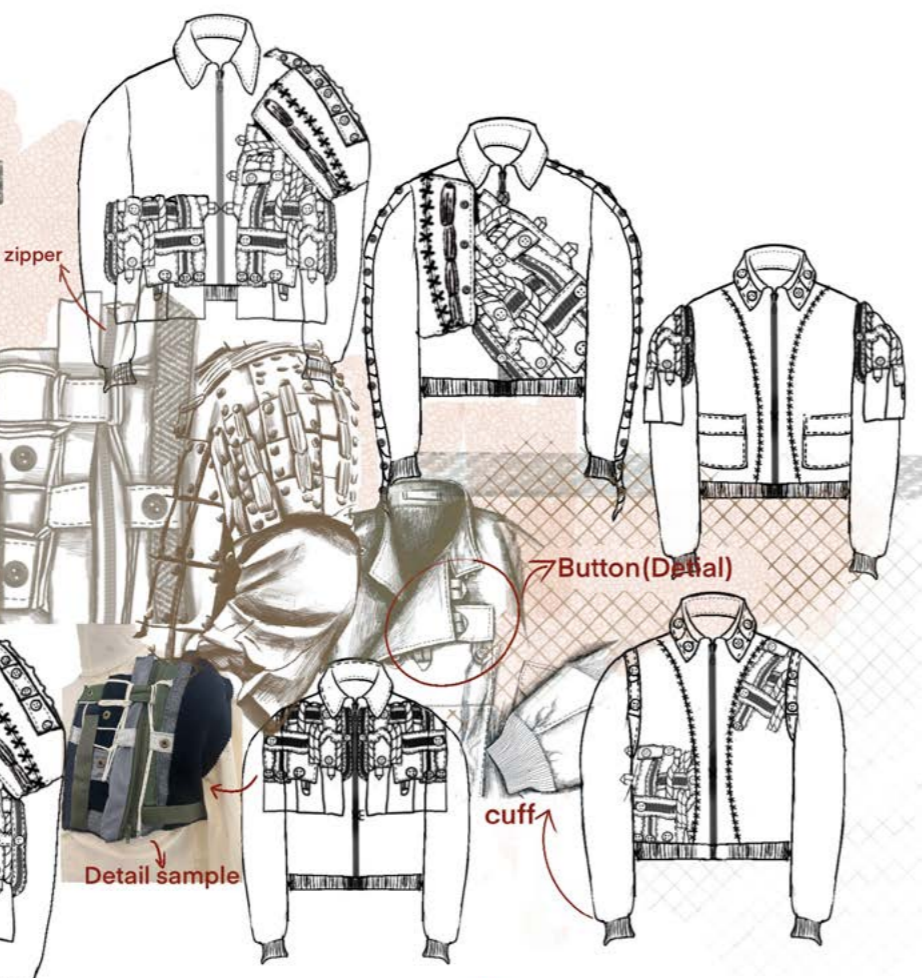
Original Army jacket.
 The hood is attached to the clothes.
 The plaid is combined with the button.
 Sample example.
 The terra cotta figures that have not lost their color.

JACKET DEVELOPMENT

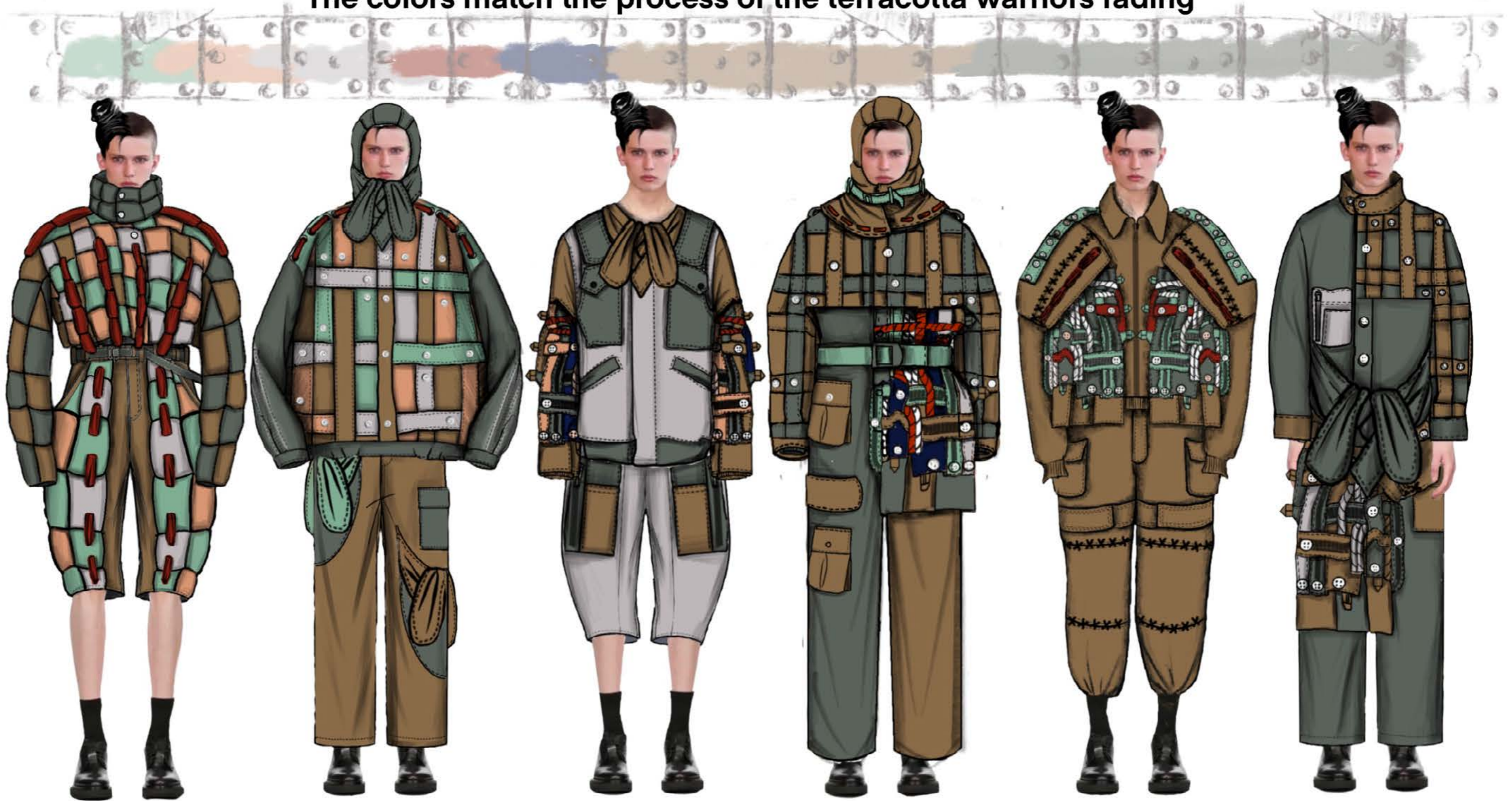
Original army.
 Pocket Detail.
 Pocket (Detail).
 cuff.
 Sample development Design.

SUIT DEVELOPMENT

Pocket.
 Original army Det cuff.
 Front Detail (sawing way).
 Original army jacket cuff.
 Sample Development Design (Front Fabric).



The colors match the process of the terracotta warriors fading



**The erosion of time has eroded the original beauty of the
Terracotta Warriors, which is a beautiful myth**